



ABSOLUTE AUCTION

FEATURING EQUIPMENT AND TRUCKS FROM

MCPHERSON FARM SUPPLY CO.



2005 NEW HOLLAND DC85 LGP

THURSDAY, FEBRUARY 26, 2015 • 10:00AM • CHADBURN, NORTH CAROLINA



2009 JOHN DEERE 5095M 4X4

**ABSOLUTE
CONSIGNMENTS
ACCEPTED**

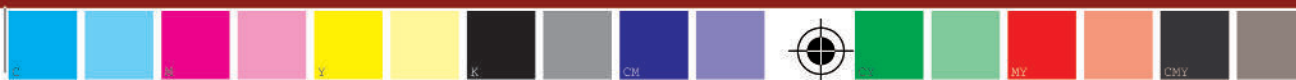
**SALE SITE LOCATION:
1500 ROSELAND ROAD, CHADBURN, NC 28431**



Auction Conducted By:
Lloyd Meekins & Sons Auction Company
4070 NC Hwy 211 East - Lumberton, NC 28358
Office Phone: 910.739.0547 • Office Fax: 910.738.1389
Email: Info@meekinsauction.com • NC Firm License # 858



Modification: D:\20150211092546-05\001 Producer: Adobe InDesign CC 2014 (Macintosh) [TRAP ABO:100 Scaling Percent
WD 100 \rsi\luc\ C:\75815 M:175875 Y:17580 X:175845] bleed: 0.125 margin size: 0.375
\\uspress-rip\01-Jobs\12430 Meekins\EPS-PDF for Rampage\12430 catalog.pdf Page 1 Creator: Adobe InDesign CC 2014 (Macintosh) [TRAP ABO:100 Scaling Percent
2400.0 dpi (Screened Data File POS, Right-Reading, Color-Seqs, Std-CMYK Simulated Spot Colors)]
PS Version: 3015.102 HQN Version 9.0 Revision 2 RSL, Ripped on Wednesday, February 11, 2015 10:53:53 AM
ID: Kelleve





(3) 12,000 GALLON AND 6,000 GALLON NITROGEN STORAGE TANKS

McPHERSON
FARM SUPPLY
★ COMPANY ★

AUCTIONEER NOTE:

Roger McPherson, owner of **McPHERSON FARM SUPPLY COMPANY** has decided after 30 years of business to retire and pursue other interests in life. A family owned and operated company, **McPHERSON FARM SUPPLY** was known throughout the agricultural and farming community as business you could trust. Building relationships on a business and personal level, **McPHERSON FARM SUPPLY COMPANY** always believed that customer service and accountability were the main ingredients for their business being successful. This auction will feature well-maintained and late model agricultural tractors, harvesting equipment, nutrient application/spraying equipment, construction and transportation equipment, and much, much, more. So mark your calendars for the 26th for this is one auction you will not want to miss.

AUCTION TERMS

- Every Item is sold as-is, where is.
- No Guarantees or warranties, expressed or implied. This brochure is only a guide. Please inspect equipment before bidding!
- **NOTE: If interested in one item, please contact to insure availability.**
- **ADMINISTRATION FEE:** Items selling for \$2,500 or less are subject to a ten percent administration fee on each item; Items selling over \$2,500 are subject to a five percent administration fee on each item. **Online Bidders** will be charged an additional two percent Internet Purchase Fee on all online purchases.
- **PAYMENT TERMS:** All payments are made in US funds. Methods of payment are cash, wire transfer, certified/ cashiers check, or company/ personal check accompanied with bank letter guaranteeing payment to Lloyd Meekins & Sons Auction Company. Equipment will not be released from sale site until purchases have been paid in full.
- **SALES TAX EXEMPTION:** Buyers qualifying for sales tax exemption must present a copy of their sales tax I.D. numbers and complete a NC certificate of exemption (E595-e), or have a current exemption form on file, in order to be exempted from sales tax on applicable purchases.
- **SALES TAX:** There will be no sales tax charged on this auction on items belonging to **McPHERSON FARM SUPPLY COMPANY**. All third party consignment items are subject to state and local tax law. The North Carolina Sales Tax (Columbus County) is 6.75% and applies to all sales, unless proper tax exemption forms are completed.
- **EXPORT EXEMPTIONS:** Buyers purchasing for export must complete and execute a NC affidavit of export (E599-C) for sales tax exemption. Items will not be released until this required document is received.
- **FOR THEIR SAFETY- NO CHILDREN ARE ALLOWED ON SALE SITE!**
- **VEHICLE TITLE INFO:** All title- item purchases will be charged a \$30 title-processing fee. All titles will be mailed out within 15 business days after payment has been received.

SALES REPRESENTATIVES AND SALE SITE MANAGERS:

Trey Meekins, 910.258.4383, trey@meekinsauction.com
EB Webb, 252.245.1405, ebwebb@meekinsauction.com
Rona West, Office Manager, 910.739.0547, rona@meekinsauction.com
Avery Brewer, Sale Site Manager, 910.608.9457

• **AUCTIONEERS:** Lloyd "Mickey" Meekins, Jr. #228, Lloyd "Trey" Meekins, III #8137

INSPECTION/REGISTRATION/ EQUIPMENT REMOVAL DATES

- **EQUIPMENT INSPECTION DATE:** Wednesday, February 25, 2015 from 8:00 am until 5:00 pm
- **BIDDER REGISTRATION** Begins Tuesday, February 24, 2015
- **REMOVAL OF EQUIPMENT DEADLINE:** All equipment must be removed from sale site by Wednesday, March 4, 2015. Equipment not removed by designated date, buyer may be charged storage fees upon discretion. Removal of equipment and insurance is the buyers responsibility.
- **OFFICE AND YARD OPERATING HOURS:** Open Monday thru Friday 8:00 am until 5:00pm. Closed weekends.

DIRECTIONS TO SALE SITE

- **Traveling South from Interstate I-95,** Take the US-74/I-74 exit, **EXIT 13B-A** toward Wilmington, keep left at the fork in the ramp, **Merge** onto US-74 East via **EXIT 13A** toward Whiteville/Wilmington, go 24.6 miles, **take the NC-130 E/NC-410/US-74 Bus exit** toward Chadburn/Bladenboro. Turn right off exit ramp onto **Joe Brown Hwy N/US-74 Bus E/NC-130/NC-410**, continue straight for 8.8 miles, **Turn left** onto Roseland Road, sale site location will be 0.4 miles on the left. Watch for auction directional and parking signs

GPS SALE SITE LOCATION:

1500 Roseland Rd, Chadburn, NC, 28431

Note: For auction schedule approximate selling times, please visit our company website at meekinsauction.com

CONSIGNMENT INFORMATION

Interested in selling your equipment or trucks for this major auction, then choose Meekins Auction Company to turn your valuable assets into cash returns. Selling Benefits to help your company achieve the best return on the sale of your assets.

If you or your company are interested in selling your surplus equipment and trucks for this major auction, please contact us today!

Contact one of our Auction Sales Representatives.

- **Mickey Meekins** – 910.258.1705
- **Trey Meekins** – Mobile: 910.258.4383 or email: trey@meekinsauction.com
- **E.B. Webb** – Mobile: 252.245.1405 or email: ebwebb@meekinsauction.com

Consignments will be accepted until
Tuesday, February 24, 2015 at 12 noon

**LOOKING TO LIQUIDATE YOUR
SURPLUS EQUIPMENT AND TRUCKS FOR THIS
MAJOR AUCTION!**

- **Flexible Contract Options** (Net Guarantee, Straight Commission, Out-Right Purchase, Off Site Auctions)



Online Bidding Registration:
register at equipmentfacts.com or call 908.788.2025
(Note: Online Registration must be completed before the date of the auction.)



INVENTORY LISTINGS

AGRICULTURAL TRACTORS

1998 JOHN DEERE 7810 (4X4) ROW-CROP TRACTOR, sn:RW7810H014041, equipped w/ A/C Cab, John Deere PowerTech 8.1L 6 cyl (175HP) engine, power shift transmission, work light package, front weights, three point hitch, pto, draw bar, triple hydraulic remote outlets, 380/85R 30 front tires, 18.4R 42 rear dual tires, meter reading: 6,681 hrs

2001 JOHN DEERE 7410 (4X4) ROW-CROP TRACTOR, sn:RW7410H056912, equipped w/ A/C Cab, John Deere PowerTech 6068 (120HP) engine, PowrQuad transmission, work light package, three point hitch, pto, draw bar, triple hydraulic remote outlets, 380/85R 28 front tires, 460/85R 38 rear tires, meter reading: 5,385 hrs

1996 JOHN DEERE 7400 ROW-CROP TRACTOR, sn:RW7400H006711, equipped w/ A/C Cab, John Deere 6068 6.8L (108HP) engine, power shift transmission, work light package, front weights, three point hitch, pto, drawbar, dual hydraulic remote outlets, 11.00-16SL front tires, 20.8-38 rear tires, meter reading: 5,603 hrs

1995 JOHN DEERE 7400 ROW-CROP TRACTOR, sn:RW7400H003326, equipped w/ A/C Cab, John Deere 6068 6.8L (108HP) engine, PowrQuad transmission, work light package, three point hitch, pto, drawbar, triple hydraulic remote outlets, 11.00-16SL front tires, 20.8-38 rear tires, meter reading: 6,024 hrs

UTILITY TRACTORS

2009 JOHN DEERE 5095M (4X4) UTILITY TRACTOR, sn:LV5095M160258, equipped w/ A/C Cab, John Deere 4.5L 4 cyl (95HP) engine, SyncReverser transmission, work light package, John Deere 563 Self-Leveling Series loader attachment, quick attach loader bucket and pallet forks, three point hitch, pto, draw bar, dual hydraulic remote outlets, air tool outlet accessory, 340/85R 24 front tires, 15.5 R 38 rear tires, meter reading: 1,198 hrs

2003 JOHN DEERE 5320 (4X4) UTILITY TRACTOR, sn:LV5320S332154, equipped w/ Rops Canopy, John Deere 2.9L 3 cyl (64HP) engine, sync shuttle transmission, work light package, three point hitch, pto, draw bar, dual hydraulic remote outlets, Titan 9.5-24 front tires, Goodyear 380/85R 28 rear tires, meter reading: 2,786 hrs

HARVESTING EQUIPMENT • GRAIN/CORN

2001 JOHN DEERE 9650STS (4WD) COMBINE, sn:H09650S690799, equipped w/ A/C Cab, John Deere 6 cyl (290HP) engine power, hydrostatic transmission, work light package, Greenstar Track System control monitor, 250 grain tank cap. Bu. Rating, chaff spreader, Firestone 20.8 R 42 front dual tires, Firestone 28L-26 Super All Traction rear tires, meter reading: 4,767 engine hrs, 3,259 separator hrs

2006 JOHN DEERE 625F GRAIN HEAD PLATFORM, sn:H00625F715888, equipped w/ 25 ft working capability, Hydra Flex series

2006 JOHN DEERE 893 CORN HEAD, sn:H00893X715824, equipped w/ 8 row working capability

GRAIN TANK EXTENSION ATTACHMENT, fits combines

2009 UNVERFERTH HT25 HEADER TRANSPORT TRAILER, sn:A51900513, equipped w/ quick release system, universal header mount, adjustable top rail, two wheel steering, Carlisle 20.5 x 8.0-10 tires

2005 UNVERFERTH HT25 HEADER TRANSPORT TRAILER, sn:A43850332, equipped w/ quick release system, universal header mount, adjustable top rail, two wheel steering, Carlisle 20.5 x 8.0-10 tires

UNICO 4500 BUSHEL CAPACITY GRAIN BIN

equipped w/ side auger

BUTLER 1850 BUSHEL CAPACITY GRAIN BIN, equipped w/ side auger

WESTFIELD W80 PORTABLE GRAIN AUGER, equipped w/ 41 ft length, pto driven, single axle running gear

2009 AGRICRAFT M6S SIDE DISCHARGE TENDER, sn:496726, equipped w/ Kohler

Magnum 8 engine, stainless steel discharge body, folding auger, skid mounted

2010 AGRICRAFT 24 X 30 PORTABLE CONVEYOR, sn:1031050, equipped w/ stainless steel body, pto driven, single axle running gear

HARVESTING EQUIPMENT • PEANUTS/ SWEET POTATOES

KMC KELLEY 3374 PEANUT COMBINE, sn:74918, equipped w/ 4 row working capability, pto driven, hydraulic controls, adjustable strippers, separator screen, 18.4-28 super single flotation tires, drawbar hitch

HOBBS 8557 MAGNUM SERIES PEANUT COMBINE, sn:A01067, equipped w/ 2 Row working capability, 2,000LB capacity, hydraulic controls, pto driven, drawbar hitch

HOBBS 8557 MAGNUM SERIES PEANUT COMBINE, sn:26437, equipped w/ 2 Row working capability, 2,000LB capacity, hydraulic controls, pto driven, drawbar hitch

W. & A. 6236 PEANUT INVERTER, sn:LB075, equipped w/ 4 Row working capability, hydraulic driven controls, fits three point hitch tractors

JOHNSON SWEET POTATO DIGGER, equipped w/ one row working capability, pto driven, trailer mounted, drawbar hitch

SHOPMADE SWEET POTATO BEDDER, equipped w/ hydraulic controls, trailer mounted

DARE 1-ROW POTATO DIGGER ATTACHMENT, sn:49627, fits three point hitch tractors

CAROLINA ONION AND POTATO SIZER, electric powered

AGRICRAFT POTATO CONVEYOR, electric powered, dry type series

SPRAYING AND NUTRIENT APPLICATION EQUIPMENT

JOHN DEERE 6000 HI-CYCLE SELF PROPELLED SPRAYER, sn:N06000X023059, equipped w/ Enclosed Cab, John Deere 4 cyl 99HP engine power, 3 speed gear type transmission, work light package, 320 gallon poly tank, 48 ft spray boom, 12.5L-15 front tire, 12.4-24 rear tires, meter reading: 6,787 hrs

REDDICK 50 FT AGRICULTURAL SPRAYER ATTACHMENT, sn:19775, equipped w/ 300 gallon poly tank, hydraulic folding spray arms, Trac-Rite foam marker, Hypro pump, hydraulic controls, cab control monitor included, fits three point hitch tractors

WILLIAMS HSPHF-0500 PULL TYPE AGRICULTURAL SPRAYER, sn:9649628, equipped w/ 500 gallon tank, 8-row working capability, hydraulic folding spray arms, Hypro pump, drawbar hitch

BURROUGHS 300 GALLON PULL TYPE AGRICULTURAL SPRAYER, sn:0714, equipped w/ poly tank, Hypro pump, folding spray arms, drawbar hitch

JOHN BLUE 1,000 GALLON NITROGEN SPRAY TRAILER, sn:WFC1020, equipped w/ stainless steel tank, Pacer pump with Briggs & Stratton 5.25HP engine, hoses included, tandem axle running gear, 11L-15SL farm service tires

JOHN BLUE 1,000 GALLON NITROGEN SPRAY TRAILER, sn:06616, equipped w/ stainless steel tank, Pacer pump with Briggs & Stratton 5.25HP engine, tandem axle running gear,

11L-15SL farm service tires

GENERAL METALS INC SKID MOUNTED 1,000 GALLON NITROGEN SPRAY TANK, sn:33119, equipped w/ Hypro Pump with 5.5HP gas engine

THERMO-KINETICS 8162-11 (12,000 GALLON) NITROGEN STORAGE TANK, sn:77390, equipped w/ stainless steel body

GENERAL METALS INC. 12,000 GALLON NITROGEN STORAGE TANK, sn:10014-1296, equipped w/ stainless steel body

KAISER 12,000 GALLON NITROGEN STORAGE TANK, equipped w/ stainless steel body

METAL EQUIPMENT COMPANY 6,000 GALLON NITROGEN STORAGE TANK, sn:1227199466, equipped w/ stainless steel body

REDDICK NITROGEN SPRAY RIG ATTACHMENT, equipped w/ 12 ft working width capability, fits three point hitch tractors

TILLAGE EQUIPMENT

JOHN DEERE 630 TANDEM DISK HARROW, sn:N00630X015870, equipped w/ 24 ft working width capability, (60) disc blades, hydraulic folding wings, drawbar hitch

JOHN DEERE 235 TANDEM DISK HARROW, sn:A00235G017214, equipped w/ 22 ft working width capability, three section hydraulic fold, 9 inch spacers, drawbar hitch

2002 UNVERFERTH RIPPER STRIPPER, sn:A38980308, equipped w/ heavy duty frame, 4 row working capability, hydraulic fold row markers, fits three point hitch tractors

KING CHISEL PLOW, equipped w/ (13) chisel shanks, springs, heavy duty frame, fits three point hitch tractors

BLANTON CHISEL PLOW, sn:1152, equipped w/ heavy duty frame, springs, spray tank mount bracket, fits three point hitch tractors

KMC KELLEY 8-ROW BEDDER, sn:83077, equipped w/ 30 inch rows, hydraulic folding row markers, fits three point hitch tractors

LILLISTON ROLLING CULTIVATOR, sn:70709, equipped w/ Cole distributor hoppers, fits three point hitch tractors

PLANTING AND SEEDING EQUIPMENT

2013 GREAT PLAINS 2000 NO-TILL GRAIN DRILL, sn:GP8818B, equipped w/ 20 ft working width capability, dual hoppers, work light package, hydraulic folding row markers, catwalk platform, Great Plains CPH-20 center pivot hitch

2006 CASE INTERNATIONAL 1200 ADVANCED SEED METER SERIES PLANTER, sn:CBJ025282, equipped w/ 8-Row working capability, No-Till 30 inch rows set up, vacuum meter, work light package, hydraulic fold row markers, hydraulic controls, control cab monitor included, fits three point hitch tractors

STANHAY S870 PRECISION BELT PLANTER, sn:419492, equipped w/ 10 row working capability, extendable, distributor hoppers, fits three point hitch tractors

MECHANICAL TRANSPLANTER MODEL 6000 SERIES HIGH SPEED METERING TRANSPLANTER, equipped w/ 4-Tray Carousel, float wheel direct drive system, four row working capability, used for cell type plants, fits three point hitch tractors

MECHANICAL TRANSPLANTER MODEL 22C SERIES PLANTER/SETTER, equipped w/ 4 row working capability, (8) station seating, fits three point hitch tractors

HAY EQUIPMENT

VERMEER 605H ROUND HAY BALER, sn:643, equipped w/ 6 ft x 5 ft bale size capability, pto driven, (8) belts, drawbar hitch

CUTTERS AND MOWING EQUIPMENT

JOHN DEERE HX20 ROTARY CUTTER, sn:W0HX20F005413, equipped w/ 20 ft cutting width deck, dual hydraulic folding wings, safety chains, drawbar hitch

ROANOKE BUSH AXE G-195 DITCHBANK SLOPE MOWER ATTACHMENT, sn:1199E0997, equipped w/ 60 inch cutting deck, pto driven, hydraulic controls, fits three point hitch tractors

HARDEE TIGER T-9098-LTW ROTARY CUTTER, sn:000890, equipped w/ 8 ft cutting deck, heavy duty frame, fits three point hitch tractors

LIVESTOCK EQUIPMENT

NEW HOLLAND 355 PORTABLE FEED MILL, sn:786803, equipped w/ folding auger, pto driven, single axle running gear, Goodyear Terra-Rib tires

SHOPMADE LIVESTOCK TRAILER, equipped w/ 6 ft x 12 ft load deck, steel floor, tandem axle, 8-14.5 tires, *note: no title available with trailer, sold with bill of sale only

TOBACCO CURER BARN • TOBACCO HARVESTING EQUIPMENT

(4) TAYLOR TOBACCO CURER BOX BARN, equipped w/ two sections, Tarheel bulk barn curing furnace crop dryer unit, 7 boxes per section, 14 total boxes, pins and accessories included

TAYLOR TOBACCO CURER BOX BARN, equipped w/ two sections, 6 boxes per section, 12 total, pins and accessories included, Aerovent gas fired crop dryer unit

(4) LONG 1125 MODEL SERIES TOBACCO CURER BARN, equipped w/ 126 racks, Reddick gas fired crop dryer unit

ROANOKE 126 RACK TOBACCO CURER BARN, sn:310049, equipped w/ Reddick gas fired crop dryer unit

POWELL 4-ROW TOBACCO TOPPER ATTACHMENT, sn:11120, equipped w/ model 55 series toppers, fits John Deere hi-cycle sprayers

TAYLOR TTLQJ TOBACCO STRIPPER, sn:9750, equipped w/ one row working capability, pto driven, drawbar hitch

TAYLOR BIGFOOT SERIES TOBACCO BALER

CONSTRUCTION EQUIPMENT

2005 NEW HOLLAND DC85 LGP CRAWLER DOZER, sn:N4DC85128, equipped w/ A/C Cab, New Holland 445T (85HP) engine power, hydrostatic transmission, work light package, sweeps, rear and side screen cab protection, 28 inch pads, 6 way dozer blade, meter reading: 1,698 hrs

ROOT RAKE CRAWLER DOZER ATTACHMENT, equipped w/ 10 ft working width capability, pin on series, fits 16,000LB to 20,000LB size crawler dozers or crawler loaders

SUPPORT EQUIPMENT • ATTACHMENTS • PARTS & ACCESSORIES

1989 THURMAN SCALE 60 X 10 MECHANICAL PIT TRUCK SCALE, sn:34790, equipped w/ 120,000LBS x 20LBS gross capacity rating, 60 x 10 tandem axle ILL accuracy class, model number: 10016570A-8130, section capacity: CLC 70,000LBS, maximum axle load ratings: Single Axle: 29,000LBS, Tandem Axle: 35,000LBS, Tri-Axle: 37,500LBS

JOHN DEERE 3PT QUICK HITCH ATTACHMENT, fits agricultural and utility tractors

BUSH HOG 121-09 SERIES REAR DRAG BLADE, sn:12-01522, equipped w/ 9 ft working width capability, hydraulic tilt and angle, heavy duty frame, fits three point hitch tractors

SHOPMADE HYDRAULIC LOG SPLITTER ATTACHMENT, fits three point hitch tractors

JOHN DEERE TRACTOR WEIGHTS

(Quantity of 7)

HEAVY DUTY CANVAS TARP (UNUSED),

used for fertilizer pits

WEG W21 (10HP) ELECTRIC MOTOR

CAMPBELL HAUSFELD GN5519

GENERATOR SET (UNUSED), sn:113280,

equipped w/ Briggs & Stratton 10.0HP engine, 5500 watt capability, receptacle outlets, mobility kit

JOHN DEERE 440G GENERATOR SET,

sn:JR2480082, equipped w/ Briggs & Stratton gas engine, 4000 watt capability, 60 Hz, receptacle outlets, skid mounted

SANBORN VERTICAL SHOP AIR

COMPRESSOR, electric powered

HYDRAULIC WET LINE TANK AND PUMP,

fits truck tractors

(2) SETS OF CO-OP AGRI-POWER LSB

DUAL TRACTOR TIRES, equipped w/ rims,

20.8-38 tire size, fits John Deere 7400 size tractors, quantity of 4 tires

LAWN MAINTENANCE EQUIPMENT

JOHN DEERE LX176 LAWN MOWER,

sn:MOL176X180730, equipped w/ John Deere K-Series 14.0HP engine, hydrostatic transmission, 38 inch deck

MTD WALK-BEHIND LAWN EDGER, equipped

w/ Briggs & Stratton 3.0HP engine

TRUCK TRACTORS - SLEEPER CAB

1993 FREIGHTLINER FLD120064 (T/A)

SLEEPER CAB TRUCK TRACTOR,

sn:1FUYDSEB6PH449412, equipped w/ Detroit Diesel Series 60 12.7L (450HP) engine, Rockwell 9 speed transmission, cruise, Inter-Axle differential lock, fifth wheel slide, 52 inch double bunk sleeper cab, 12,000LB front axle, 40,000LB rear axles, air ride suspension, *note: new tires recently installed, odometer reading: 371,637 miles

1989 PETERBILT 377 (T/A) SLEEPER CAB

TRUCK TRACTOR, sn:1XPCD29X1KN270775,

equipped w/ Cummins NT Series 14.0L (350HP) engine, Eaton Fuller 9 speed transmission, Jake brake, axle differential lock, fifth wheel slide, single sleeper cab, 12,000LB front axle, 38,000LB rear axles, air ride suspension, hydraulic wet line kit, *note: less than 5,000 miles on recently installed rebuilt Cummins engine

FLATBED TRUCKS

1977 CHEVROLET C60 FLATBED TRUCK,

sn:CCE617V108651, equipped w/ V8 gas engine, 4x2 manual transmission, 5,000LB front axle, 14,200LB rear axle, 16 ft flatbed body, tow package

FERTILIZER SPREADER TRUCKS

1991 INTERNATIONAL 4700 FERTILIZER

SPREADER TRUCK, sn:1HTSCNEPOMH351990, equipped w/ DT360 engine power, Spicer Double Duty D 5x2 transmission, 152 wheel base, New Leader L2020GT-11 fertilizer spreader body, sn:109774, 385/65R 22.5 front radial tires, Goodyear 48 x 31.00-20NHS Super Terra-Grip rear flotation tires, odometer reading: 50,140 miles

GRAIN TRUCKS

1987 CHEVROLET KODIAK 70 GRAIN

TRUCK, sn:1GBM7D1Y7HV115769, equipped w/ Cat 3208 engine power, Eaton Fuller 6 speed transmission, air brakes, 9,000LB front axle, 21,200LB rear axle, 16 ft grain dump body, 48 inch sides, odometer reading: 357,736 miles

FLATBED TRAILERS

1976 GREAT DANE GPSAR240 FLATBED

TRAILER, sn:315739, equipped w/ 96 inch x 40 ft load deck, headache rack, tandem axle, spring suspension, 10.00 R 20 tires

END DUMP TRAILERS

1973 HILL 36 FT ALUMINUM END DUMP

TRAILER, sn:2491, equipped w/ manual tarp system, Reyco spring suspension, tandem axle, 10.00-20 tires

GRAIN TRAILERS

2003 TIMPTE SUPER HOPPER SERIES

GRAIN TRAILER, sn:1TDHY222938102536, equipped w/ 42 ft aluminum body, 10 ft 10 in height, (2) bottom dump hoppers, Shurco Shur-Lok tarp system, 40,000LB rear axles, air ride suspension, tandem axle, 11R 24.5 tires

EQUIPMENT TRAILERS

1993 HUDSON 9 TON TAG EQUIPMENT

TRAILER, sn:10HHTD104P1000385, equipped w/ 96 inch x 18 ft load deck, wood floor, 5 ft beavertail, loading ramps, tandem axle, 8.75-16.5LT tires

PICKUPS

1987 MAZDA B2600 (4X4) PICKUP,

sn:JM2UF4127H0173724, equipped w/ 2.6L 4 cyl engine, 5 speed manual transmission, short bed, tool box, tow hitch, odometer reading: 275,188 miles

RECREATIONAL ITEMS

1994 NITRO TRACKER 170TF RICK

CHUNN EDITION BASS FISHING BOAT,

sn:BUJ80156F494, equipped w/ Mercury Tracker Pro Series 75HP outboard engine, 17 ft fiberglass body, Tracker Pro Series 35 trolling motor, Hummingbird Wide View depth finder and fishing accessories included, 1995 Tracker Trailstar Boat Trailer, sn:4TM13AE13SB001085, equipped w/ Cooper Cobra P195/70R 13 Radial G/T tires, single axle



BUTLER 1850 BUSHEL CAPACITY GRAIN BIN



LARGE QUANTITY OF POTATO BASKETS



1987 MAZDA B2600 4X4



1 OF 5 - TAYLOR TOBACCO CURER BOX BARNs



CHEVROLET KODIAK 70 GRAIN DUMP TRUCK



INTERNATIONAL 4700 - NEW LEADER L2020GT-11 FERTILIZER SPREADER TRUCK



1977 CHEVROLET C60 FLATBED TRUCK



1993 FREIGHTLINER FLD120064 - 2003 TIMPTE SUPER HOPPER



1989 PETERBILT 377 - HILL 36 FT ALUMINUM END DUMP TRAILER



2003 TIMPTE SUPER HOPPER 42 FT GRAIN TRAILER



Descriptions at our company website: www.meekinsauction.com

Modification: D:\20150210152613-05\007 Producer: Adobe PDF Library 11.0 Creation Date: D:\20150210152613-05\007
 WD 100 \rsi\luc\ C:\175615 X:\175615 Y:\175615 Z:\175615 [bleed: 0.125 margin size: 0.375
 \\\uspress-rip\01_Jobs\12430 Meekins\EPS-PDF for Rampage\12430 catalog.pdf Page 5 Creator: Adobe InDesign CC 2014 (Macintosh)
 2400.0 dpi (Screened Data File POS, Right-Reading, Color-Seqs, Std-CVF Simulated Spot Colors) [TRAP ABO:100 Sealing Percent
 Cyan Magenta Yellow Black
 PS Version: 3015.102 HQN Version 9.0 Revision 2 RSL, Ripped on Tuesday, February 10, 2015 3:28:31 PM
 ID: Kelleve





STANHAY S870 PRECISION BELT PLANTER



NEW HOLLAND 355 PORTABLE FEED MILL



JOHN DEERE HX20 BATWING CUTTER



2013 GREAT PLAINS 2000 NO-TILL GRAIN DRILL



AGRICRAFT M65 SIDE DISCHARGE TENDER



KMC KELLEY 3374 4-ROW PEANUT COMBINE



THURMAN SCALE 60 X 10 MECHANICAL PIT TRUCK SCALE



2006 JOHN DEERE 893 - 2005 UNVERFERTH HT25 HEADER TRAILER



2009 AGRICRAFT 24 X 30 PORTABLE CONVEYOR



W. & A. 6236 4-ROW PEANUT INVERTER

Modification: D:\20150210152620-05\007 Producer: Adobe PDF Library 11.0 Creation Date: D:\20150210152620-05\007
 WD 100 \rsi\luc\ C:\175615 X:\175615 Y:\175615 [TRAP ABO:100 Sealing Percent
 \\\naspress-rip\01_Jobs\112430 Meekins\EPS-PDF for Rampage\112430 catalog.pdf Page 6 Creator: Adobe InDesign CC 2014 (Macintosh)
 2400.0 dpi (Screened Data File POS, Right-Reading, Color-Seps, Std-CMYK Simulated Spot Colors) [TRAP ABO:100 Sealing Percent
 PS Version: 3015.102 HON Version 9.0 Revision 2 RSL, Ripped on Tuesday, February 10, 2015 3:29:37 PM
 Cyan Magenta Yellow Black
 ID: Kelley





2005 NEW HOLLAND DC85 LGP



2001 JOHN DEERE 7410 ROW-CROP 4X4



2009 JOHN DEERE 5095M 4X4



2003 JOHN DEERE 5320 4X4



1996 JOHN DEERE 7400 ROW-CROP



1998 JOHN DEERE 7810 ROW-CROP 4X4



JOHN DEERE 6000 HI-CYCLE SPRAYER



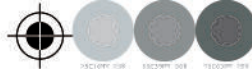
2001 JOHN DEERE 9650STS 4WD



1995 JOHN DEERE 7400 - HOBBS 8557
MAGNUM PEANUT COMBINE



2006 JOHN DEERE 625F HYDRAFLEX - 2009
UNVERFERTH HT25 HEADER TRAILER



LLOYD MEEKINS & SONS AUCTION CO.
4070 NC HWY. 211 E
LUMBERTON, NC 28358
www.meekinsauction.com

FIRST-CLASS MAIL
PRSR
U.S. Postage
PAID
U.S. Press
31601

RETURN SERVICE REQUESTED

ABSOLUTE AUCTION

FEATURING EQUIPMENT & TRUCKS FROM

MCPHERSON FARM SUPPLY CO.

**THURSDAY, FEBRUARY 26, 2015
10:00 AM • CHADBOURN, NC**



1996 JOHN DEERE 7400



2001 JOHN DEERE 7410 4X4

MCPHERSON FARM SUPPLY COMPANY



2003 JOHN DEERE 5320 4X4



2009 JOHN DEERE 5095M 4X4



Modification: D:\20150211\101235-05\001 Producer: Adobe PDF Library 11.0 Creation Date: D:\20150211\101235-05\001
WD 100 \rsi\luc\ C:\75615 M:\75615 Y:\75615 X:\75615 [TRAP ABO:100 Sealing Percent
PS Version: 3015.102 HON Version 9.0 Revision 2 RSL, Ripped on Wednesday, February 11, 2015 10:13:32 AM
ID: Kellie

\\uspress-rip\01\Jobs\12430 Meekins\PS-PPF for Rampage\12430 catalog.pdf Page 8 Creator: Adobe InDesign CC 2014 (Macintosh)
2400.0 dpi (Screened Data File POS, Right-Reading, Color-Seqs, Std-CMY Simulated Spot Colors) [TRAP ABO:100 Sealing Percent
PS Version: 3015.102 HON Version 9.0 Revision 2 RSL, Ripped on Wednesday, February 11, 2015 10:13:32 AM
ID: Kellie

