



ABSOLUTE

AUCTION

Sale Site Address:
4340 West Pine Street
Mount Airy, NC 27030

(1 OF 3) 2007 INT 7600 DAY CABS

Wednesday, July 24th, 2013 at 9:00 a.m.

MOUNT AIRY, NORTH CAROLINA



Featuring Equipment from :

ATCO EQUIPMENT SALES AND RENTALS
ARMSTRONG CONTRACTING
EASY KLEEN PRESSURE SYSTEMS
TRIANGLE GRADING AND PAVING COMPANY
EAST COAST RESOURCES
WAGONER FARMS
and other owners



EASY-KLEEN  **Manufactured in North America**
PRESSURE SYSTEMS LTD.
MANUFACTURER OF HIGH PRESSURE SPRAYING EQUIPMENT



ATCO EQUIPMENT SALES & RENTALS

Auctioneer Note: MAJOR PUBLIC AUCTION consisting of absolute packages of equipment from well known regional and local contractors. Large selection of Earth Moving Equipment, Paving and Compaction Equipment, Highway Maintenance Equipment, Agricultural Equipment, Support Equipment, Attachments, Heavy Duty Trucks, Lowboy Trailers, Walking Floor Trailers, End Dump Trailers, Specialty Trucks, Pickups, and much more. Make plans today to attend, for this is one auction you will not want to miss!



1996 CAT 120H



Auction Conducted By:
Lloyd Meekins & Sons Auction Company
4070 NC Hwy 211 East - Lumberton, NC 28358
Office Phone: 800.499.6560; 910.739.0547
Email: info@meekinsauction.com • NC Firm License #858



Layout 1 (Page 1) Created: 7/23/13 4:04 PM By: QuarkXpress(R) 8.5
2400.0 dpi (Screened Data File POS, Right-Reading, Color-Setup, Enh-OVP Simulated Spot Colors)
PS Version: 3015.102 HQM Version 7.0 Revision 91 PSI System 10.6 Build: #21, Ripped on Tuesday, July 02, 2013 4:09:49
ID: Rosemary

0.00
0.01
0.02
0.03
0.04
0.05
0.06
0.07
0.08
0.09
0.10
0.11
0.12
0.13
0.14
0.15
0.16
0.17
0.18
0.19
0.20
0.21
0.22
0.23
0.24
0.25
0.26
0.27
0.28
0.29
0.30
0.31
0.32
0.33
0.34
0.35
0.36
0.37
0.38
0.39
0.40
0.41
0.42
0.43
0.44
0.45
0.46
0.47
0.48
0.49
0.50
0.51
0.52
0.53
0.54
0.55
0.56
0.57
0.58
0.59
0.60
0.61
0.62
0.63
0.64
0.65
0.66
0.67
0.68
0.69
0.70
0.71
0.72
0.73
0.74
0.75
0.76
0.77
0.78
0.79
0.80
0.81
0.82
0.83
0.84
0.85
0.86
0.87
0.88
0.89
0.90
0.91
0.92
0.93
0.94
0.95
0.96
0.97
0.98
0.99
1.00



2005 CAT 322CL - 2002 VOLVO EC240LR - LONG REACH EXCAVATORS



AUCTION TERMS

- Every Item is sold as-is, where is.
- No Guarantees or warranties, expressed or implied. This brochure is only a guide. PLEASE INSPECT EQUIPMENT BEFORE BIDDING!
- **NOTE:** If interested in one item, please contact to insure availability.
- **ADMINISTRATION FEE:** All items will be subject to a ten percent administration fee on each item. **Online Bidders** will be charged an twelve percent administration fee on all online purchases on this auction.
- **PAYMENT TERMS:** All payments are made in US funds. Methods of payment are cash, wire transfer, certified/ cashiers check, or company/ personal check accompanied with bank letter guaranteeing payment to Lloyd Meekins & Sons Auction Company. Equipment will not be released from sale site until purchases have been paid in full.
- **SALES TAX EXEMPTION:** Buyers qualifying for sales tax exemption must present a copy of their sales tax I.D. numbers and complete a NC certificate of exemption (E595-e), or have a current exemption form on file, in order to be exempted from sales tax on applicable purchases.
- **SALES TAX:** The North Carolina Sales Tax (Surry County) is 7.00% and applies to all sales, unless proper tax exemption forms are completed.
- **EXPORT EXEMPTIONS:** Buyers purchasing for export must complete and execute a NC affidavit of export (E599-C) for sales tax exemption. Items will not be released until this required document is received.
- **FOR THEIR SAFETY- NO CHILDREN ARE ALLOWED ON SALE SITE!**
- **VEHICLE TITLE INFO:** All title- item purchases will be charged a \$25 title-processing fee. All titles will be mailed out within 15 business days after payment has been received.
- **SALES REPRESENTATIVES AND SALE SITE MANAGERS:**
Chris Cea, 910.633.8244
Ruford Watson, Sale Site Manager, 910.734.1828
Trey Meekins, 910.258.4383
EB Webb, 252.245.1405
- **AUCTIONEERS:** Lloyd "Mickey" Meekins, Jr. #228, Stacey Johnson #7273, Lloyd "Trey" Meekins, III #8137

INSPECTION/REGISTRATION/ EQUIPMENT REMOVAL DATES

- **EQUIPMENT INSPECTION DATE:** Tuesday, July 23rd, 2013 from 8:00 am until 6:00 pm
- **BIDDER REGISTRATION** Begins Monday, July 22nd, 2013
- **REMOVAL OF EQUIPMENT DEADLINE:** All equipment must be removed from sale site by Thursday, August 1st, 2013. Loading docks are available. Equipment not removed by designated date, buyer may be charged storage fees. Removal of equipment and insurance is the buyers' responsibility.
- **OFFICE AND YARD OPERATING HOURS:** Open Monday thru Friday 8:00 am until 5:00pm. Closed weekends.

DIRECTIONS TO SALE SITE

- From Winston-Salem, NC, Take US-52 North for 32.6 miles, Merge onto I-74 W via EXIT 140 on the left toward I-77/Wytheville, go 10.9 miles, Take the NC-89 exit, EXIT 6, toward Mount Airy, go 0.4 miles, Turn left onto W Pine St/NC-89 W, go 0.5 miles, sale site will be located on the right side of the road.
- From Charlotte, NC, Take I-77 North for 88 miles, Take the NC-89 ext, EXIT 100, toward Mount Airy/Galax, go 0.5 mile, Turn right onto W Pine St/NC-89 E, go 0.8 mile, Make a U-turn at Brickell Ln onto W Pine St/NC-89 W, go .07 mile, sale site will be located on the right side of the road.

ACCOMMODATIONS

- **Hampton Inn** (Auction Headquarters) - 2029 Rockford Street, Mount Airy, NC, 27030 - 336.789.5999
- **Holiday Inn Express Hotel & Suites** - 1320 Ems Drive, Mount Airy, NC, 27030 - 336.719.1731
- **Comfort Inn** - 1293 Newsome Street Mount Airy, NC, 27030 - 336.783.0008

AIRLINES/TRAVEL AGENCY

- **Mount Airy/Surry County Airport** (KMWK) 336.789.5153
- **Piedmont Triad International Airport** (GSO) www.flyfrompti.com
- **ITS Travel Agency** 843.669.8549

CONSIGNMENT INFORMATION

Interested in selling your equipment or trucks for this major auction, then choose Meekins Auction Company to turn your valuable assets into cash returns. Selling Benefits to help your company achieve the best return on the sale of your assets.

If you or your company are interested in selling your surplus equipment and trucks for this major auction, please contact us today!

Contact one of our Auction Sales Managers.

- **Trey Meekins** - Mobile: 910.258.4383 or email: trey@meekinsauction.com
- **E.B. Webb** - Mobile: 252.245.1405 or email: ebwebb@meekinsauction.com
- **Chris Cea** - Mobile: 910.633.8244 or email: chris@meekinsauction.com

Consignments will be accepted until
Friday, July 19th, 2013

**LOOKING TO LIQUIDATE YOUR
SURPLUS EQUIPMENT AND TRUCKS
FOR THIS MAJOR AUCTION!**

- **Flexible Contract Options** (Net Guarantee, Straight Commission, Out-Right Purchase, Off Site Auctions)

For auction schedule and approximate selling times, please visit our company website at
meekinsauction.com



Online Bidding Registration: register at
equipmentfacts.com or call 908.788.2025

(Note: Online Registration must be completed before the date of the auction.)





CAT 966C



(1 OF 2) CAT 970F LOADERS



1997 CASE 621B



2003 VOLVO L150E



1996 DEERE 670B



2006 KOMATSU WA95-3H



1999 KOBELCO SK200 ACERA SUPER SERIES

CONSTRUCTION EQUIPMENT

A Partial List to Date Includes the Following.

HYDRAULIC EXCAVATORS

- 2005 Cat 322CL Long Reach**, sn:CAT0322CHHEK00927, equipped w/ A/C Cab, Cat 3126 engine, work light package, 31.5 inch pads, 50 ft reach capability, 44 inch ditch cleaning bucket, meter reading: 7,471 hrs
- 1992 Cat E120B**, sn:6JF00698, equipped w/ Enclosed Cab, Mitsubishi engine, 27.5 inch pads, Mann manual thumb attachment, 36 inch bucket
- 2002 Cat 303.5**, sn:CAT03035TDCH00622, equipped w/ Rops Canopy, Perkins 3013 engine, rubber tracks, work light package, backfill dozer blade, 12 inch shoes, 16 inch bucket, meter reading: 3,309 hrs
- 2002 Volvo EC240LR Long Reach**, sn:EC240LRC03897, equipped w/ A/C Cab, Cummins 8.3L engine, work light package, 31.5 inch pads, 50 ft reach capability, 60 inch cleanout bucket, meter reading: 6,103 hrs
- 1999 Kobelco SK200 Acera Super Series**, sn:YN24974, equipped w/ Enclosed Cab, Mitsubishi engine, 31.5 inch pads, Hensley 36 inch bucket
- 1999 John Deere 110**, sn:P00110X020093, equipped w/ A/C Cab, John Deere 4.5L engine, work light package, 9 ft 2 in stick, bucket

Bobcat 331, equipped w/ Rops Canopy, Kubota engine, rubber tracks, backfill dozer blade, work light package, plumbed auxiliary hydraulics, bucket

WHEEL LOADERS

- 1995 Cat 970F**, sn:7SK00542, equipped w/ Enclosed Cab, Cat 3306 engine, 4 speed transmission, ride control, work light package, Cat 5 yd loader bucket, 26.5 R 25 tires
- 1994 Cat 970F**, sn:7SK00461, equipped w/ Enclosed Cab, Cat 3306 engine, 4 speed transmission, ride control, work light package, Cat 5 yd loader bucket, 26.5 R 25 tires
- Cat 966C**, sn:76J2216, equipped w/ Enclosed Cab, Cat 3306 engine, power shift transmission, work light package, 4 yd loader bucket, 23.5-25 tires, meter reading: 6,859 hrs
- 2003 Volvo L150E**, sn:L150EV6595, equipped w/ A/C Cab, Volvo 245HP engine, automatic power shift transmission, waste handler series, work light package, 5 yd loader bucket, 26.5 R 25 tires, meter reading: 17,293 hrs
- 1999 John Deere 110**, sn:P00110X020093, equipped w/ A/C Cab, John Deere 4.5L engine, work light package, 9 ft 2 in stick, bucket

- Michelin 26.5 R 25 tires, meter reading: 22,729 hrs
- 1991 Volvo BM L120**, sn:L120V60660, equipped w/ A/C Cab, Volvo 6 cyl (190HP) turbo engine, automatic power shift transmission, work light package, 4.0 yd loader bucket, Michelin 23.5 R 25 tires, meter reading: 7,587 hrs
- 1997 Case 621B**, sn:JEE0054191, equipped w/ Enclosed Cab, Case 6T-590 engine, work light package, loader bucket, 20.5-25 tires, 5,130 hrs
- John Deere 84**, sn:T60084X000019, equipped w/ Rops Canopy, Yanmar 3.5L engine, power shift transmission, dozer blade, forks, 17.5/60-20 tires
- 2006 Komatsu WA95-3H**, sn:KMTWA065V79H20808, equipped w/ A/C Cab, 16 valve engine, work light package, aux hydraulics, quick connect loader bucket, 425/75R 20 tires, meter reading: 1,203 hrs

MOTOR GRADERS

- 1996 Cat 120H**, sn:4MK0096, equipped w/ A/C Cab, Cat 3116 engine, power shift transmission, work light package, articulating frame, 12 ft board, scarifier, 14.00-24 tires
- 1973 Cat 12F**, sn:89H1583, equipped w/ Rops Canopy, Cat 3306 engine, power shift transmission, 12 ft board, 14.00-24 tires, rear hydraulic ripper
- 1988 Dresser-Galion A606 (AWD)**, sn:G450002U003303, equipped w/ Enclosed Cab, Dresser D505 turbo engine, power shift transmission, all wheel drive, work light package, push block, articulating frame, 13 ft board, scarifier, 17.5-25 tires, meter reading: 6,497 hrs

CONTINUED

Descriptions at our company website: www.meekinsauction.com





ROSCO MAXIMIZER II
ASPHALT DISTRIBUTOR



(1 OF 2) 2006 LEEBOY 8510 PAVERS



1990 BLAW KNOX RW-100A ROAD WIDENER



ASPHALT ZIPPER AZ-360



2004 TAMROCK
CHA-560 HYDRAULIC
ROCK DRILL



2001 ROADTEC RX-50B MILLING MACHINE



CAT 613C



BROS LSPRM-8 SOIL STABILIZER

1989 Champion 720A, sn:720A1875961942489, equipped w/ Enclosed Cab, Cummins 8.3L engine, power shift transmission, work light package, front plow attachment, articulating frame, 12 ft board, scarifier, 17.5-25 tires, meter reading: 7,450 hrs
1996 John Deere 670B, sn:DW670BX559386, equipped w/ Enclosed Cab, John Deere 6068T engine, power shift transmission, hydraulic side shift and tilt, work light package, 12 ft board, articulating frame, ex county machine, meter reading: 9,402 hrs
John Deere 570A, sn:005345T, equipped w/ Enclosed Cab, 6 cyl turbocharged engine, power shift transmission, articulating frame, scarifier, 12 ft blade, 17.5-25 tires, meter reading: 4,427 hrs

MOTOR SCRAPERS

Cat 613C, sn:92X00630, equipped w/ Rops Canopy, Cat 3208 engine, power shift transmission, self elevating, 11 cu yd haul capability, 23.5-25 tires
Cat 613, sn:71M2786, equipped w/ Rops Canopy, Cat 3208 reman engine, power shift transmission, self elevating, 11 cu yd haul capability, 23.5-25 tires

SOIL STABILIZERS

BROS LSPRM-8, sn:4376, equipped w/ Rops Canopy, Cummins NTC-350 Big Cam engine, 8 ft cutting head, 28L-26 front tires, 14.9-24 rear tires
Rex HDS, sn:HK858, equipped w/ open station, Detroit 4 cyl diesel engine, 11R 24.5 front tires, 18.4-34 rear tires, 8 ft drum

DRILLING EQUIPMENT

2004 Tamrock CHA-560 Crawler Hydraulic Rock Drill, sn:104T7108-1, equipped w/ Cat 3056E engine, hydrostatic track drive, ride on platform, 12 inch steel pads, HL510 Hydraulic Rock Drill, telescopic boom, dust collection system, light package, chain feed, self contained unit, meter reading: 968 hrs

ASPHALT PAVING EQUIPMENT

2006 Leeboy 8500 Low Deck Crawler Asphalt Paver, sn:45827, equipped w/ Hatz 4 cyl engine, hydrostatic transmission, work light package, Legend electric heated screed system, steel tracks, wash down system, 8 ft - 15 ft paving width capability, meter reading: 2,311 hrs
2006 Leeboy 8510 Crawler Asphalt Paver, sn:46323, equipped w/ Hatz Silent Pack 4 cyl engine, hydrostatic track drive, steel tracks, grade control, work light package, 7.5 ton capacity rating, wash down system, Legend Screed system, 8 ft - 15 ft paving width, meter reading: 1,987 hrs
Roadtec RP185-10 Crawler Asphalt Paver, sn:106, equipped w/ John Deere 6059 engine, hydrostatic transmission, dual operator stations, rubber tracks, wash down system, slope controls, plumbed for Topcon grade control system, electric heated screed, 10 ft - 20 ft paving width capability
1991 Ford F-Series Rosco Maximizer Asphalt Distributor Truck, sn:1FDXK84AXMVA16382, equipped w/ Ford 6 cyl 7.8L diesel engine, 5x2 manual transmission, air brakes, 178 wheel base, 10,000LB front axle, 23,000LB rear axles, Rosco Maximizer Distributor Body, sn:31888, 1,850 gallon tank, hydrostatic, Rosco EZ-1 in-cab controls, spray bar and wand, odometer reading: 60,679 miles
Chevrolet C65 Asphalt Distributor Truck, sn:CCE663V146705, equipped w/ V8 gas engine, 5x2 manual transmission, gvwr rating: 25,500LBS, Littleford Spraymaster Distributor body, sn:S0305MM6621, 1,065 gallon tank, rear pony motor, spray wand

ASPHALT, CONCRETE AND ROAD MAINTENANCE EQUIPMENT

2001 Roadtec RX-50B Milling Machine, sn:128, equipped w/ Cummins QSX-15C (600HP) engine, hydrostatic drive, dual operator stations, emergency shut down system, 7 ft 2 in cutter drum, wash down system, work light package, 25 ft conveyor, Topcon grade control system, rubber pads/steel tracks
1990 Blaw-Knox RW-100A Road Widener, sn:10013-05, equipped w/ John Deere 4239 engine, hydrostatic drive, throttle control, work light package, 10 ft hopper width, 385/65R 22.5 radial tires, meter reading: 3,241 hrs
1998 Asphalt Zipper AZ-360 Portable Asphalt Reclaimer, equipped w/ John Deere 4.5L engine, Rockford powertrain, 36 inch cutting width capability, fits small wheel loaders, 1998 Metal Craft MF-11-6FB transport trailer, meter reading: 360 hrs
Manta Ray Portable Infrared Asphalt Heater, equipped w/ LP burner cylinders, winch, 8 ft working width capability
Rivinius R400B Bedding Conveyor, sn:4B80211, equipped w/ Wisconsin engine, Rockford power take-off, trailer mounted, rear conveyor discharge direction
Gomaco C-450 Concrete Finisher, sn:M01095-00, equipped w/ Honda GX390 engine, self contained, trimmer wheel, 25 ft finishing width capability, trailer mounted

COMPACTION EQUIPMENT - TANDEM VIBRATORY ROLLERS

2000 Wacker RD25, sn:5155167, equipped w/ Roll Bar, Hatz engine, hydrostatic transmission, work light package, 43 inch drums, water spray system, meter reading: 2,158 hrs
1998 Wacker RD25, sn:5002763, equipped w/ Roll Bar, Hatz engine, hydrostatic transmission, work light package, 43 inch drums, water spray system, meter reading: 2,104 hrs
2000 Wacker RD11A, sn:5035885, equipped w/ Honda 20.0HP engine, hydrostatic transmission, water spray system, 35 inch drums
2001 Lee Boy 400, sn:1187, equipped w/ Rops Canopy, Lombardini 3 cyl diesel engine, hydrostatic transmission, water spray system, 40 inch front drum, 43 inch rear drum
Stone Wolfpack DDR-100
Stone AVR400, sn:511141, equipped w/ open station, Kohler CH730S engine, hydrostatic transmission, 40 inch drums, water spray system
Stow R2000 Econo, equipped w/ Honda 8HP engine, hydrostatic transmission, 28 inch front drum, 32 inch rear drum
2004 Ingersoll-Rand DA-30

COMPACTION EQUIPMENT - VIBRATORY SMOOTH DRUMS

Dynapac CA15D, sn:1669D17, equipped w/ open station, John Deere 4239 engine, hydrostatic transmission, 66 inch drum, 13.6-28 tires, meter reading: 1,877 hrs
Raygo 304A Rascal, sn:65A119JR, equipped w/ open station, John Deere 4039 engine, hydrostatic transmission, 65 inch drum, 14.9-24 tires, meter reading: 1,521 hrs

COMPACTION EQUIPMENT - VIBRATORY PADFOOT DRUMS

2006 Sakai SV201TB, sn:VSV14T10150, equipped w/ Rops Canopy, Cummins B3.3 engine, hydrostatic transmission, 54 inch drum, hydraulic dozer blade attachment, 11.2-20 tires, meter reading: 1,594 hrs





Stone RD33HR Trench Compactor, sn:3321173, equipped w/ Hatz diesel engine, walk behind operation, 33 inch padded drums, low meter hrs

COMPACTION EQUIPMENT – PNEUMATIC/PROOF ROLLERS

2000 Dynapac CP132 Pneumatic Asphalt Roller, sn:21620335, equipped w/ Roll Bar, Cummins 3.9L (100HP) engine, hydrostatic transmission, (9) compaction wheels, water spray system

Ferguson 50 Ton Proof Roller, equipped w/ (4) 16.00-21.00 tires, pull type attachment

BROOM TRACTORS

2004 Rosco Sweep Pro, sn:38726, equipped w/ A/C Cab, Cummins B3.3 engine, hydrostatic drive, work light package, 8 ft broom, water spray system, meter reading: 4,619 hrs

John Deere 2130, equipped w/ Enclosed Cab, 4 cyl 55 horsepower engine, work light package, pto, three point hitch, hydraulic remote valves, front mount sweeper broom attachment

CRAWLER DOZERS AND LOADERS

1995 Cat D4H LGP Crawler Dozer, sn:9GJ01440, equipped w/ Rops Canopy, Cat 3304 engine, power shift, sweeps, rear screen protection, 30 inch pads, 6 way dozer blade, draw bar

1989 Komatsu D66S-1 Crawler Loader, sn:01729, equipped w/ Rops Canopy, Komatsu 6 cyl engine, hydrostatic transmission, work light package, 20 inch pads, loader bucket, meter reading: 9,903 hrs

Dresser TD-100E Crawler Loader, sn:4490015U0095104, equipped w/ Rops Canopy, screen protection, sweeps, power shift transmission, 4-n-1 loader bucket

LOADER BACKHOES

1999 New Holland 555E, sn:31016674, equipped w/ Rops Canopy, work light package, gp loader bucket, standard stick, hoe bucket

Ford 655C, sn:A417616, equipped w/ Rops Canopy, work light package, gp loader bucket, standard stick, hoe bucket

Deere 410C (4x4), sn:T0410CF770015, equipped w/ Rops Canopy, 4 cyl engine, 4-n-1 loader bucket, standard stick, hoe bucket

1995 Case 580 Super K, sn:JG0179444, equipped w/ Enclosed Cab, 2wd, work light package, loader bucket, standard stick, 24 inch hoe bucket, meter reading: 4,698 hrs

2004 Kubota B21 (4x4), sn:63054, equipped w/ Rops Canopy, 3 cyl Kubota diesel engine, hydrostatic transmission, work light package, gp loader bucket, standard stick, 10 inch hoe bucket, low meter hrs

LANDSCAPE LOADERS

2000 Deere 210LE (4x4), sn:T0210LE880690, equipped w/ Rops Canopy, 4 cyl turbo engine, 4 speed power shift transmission, work light package, loader bucket, Gannon Woods 84 inch box scraper, meter reading: 8,519 hrs

SKID STEER LOADERS

2010 Cat 277C, sn:CAT0277CAJWF02355, equipped w/ Rops Canopy, 3.3L 4 cyl engine, joystick controls, rubber tracks, work light package, auxiliary hydraulics, Cat 72 inch loader bucket, meter reading: 1,887 hrs

2007 ASV Posi-Trac RC100, sn:RSD007720, equipped w/ A/C Cab, Perkins turbo engine, rubber tracks, auxiliary hydraulics, loader bucket

2005 Deere 317, sn:103528, equipped w/ Rops Canopy, 4 cyl turbo engine, aux hydraulics, loader bucket, solid tires

1999 Bobcat 873, sn:514124577, equipped w/ Rops Canopy, 4 cyl engine, work light package, auxiliary hydraulics, loader bucket

Bobcat S185, sn:525011386, equipped w/ Rops Canopy, Kubota 4 cyl engine, work light package, high flow auxiliary hydraulic system, loader bucket, meter reading: 3,319 hrs

Case 1845C, sn:JAF0058363, equipped w/ Rops Canopy, Cummins engine, auxiliary hydraulics, quick attach, loader bucket and forks

2002 Toro Dingo TX-425 Mini, sn:220000521, equipped w/ Kohler 25HP engine, hydrostatic track drive, wide track series, walk behind operation, rubber tracks, aux hydraulics, quick attach loader bucket, meter reading: 141 hrs

2005 Toro Dingo TX-420 Mini, sn:250000158, equipped w/ Kohler 20HP engine, hydrostatic track drive, walk behind operation, rubber tracks, aux hydraulics, quick attach loader bucket, meter reading: 172 hrs

Toro Dingo 222 Mini, sn:890372, equipped w/ Kohler engine, 2 speed, auxiliary hydraulics, quick attach, ride on platform, loader bucket, meter reading: 504 hrs

UTILITY – AGRICULTURAL TRACTORS

2008 Kubota M5040 (4x4), sn:80118, equipped w/ A/C Cab, 4 cyl (50HP) engine, Ultra Grand Cab series, synchro shuttle transmission, work light package, Kubota LA1153 front loader attachment, quick attach loader bucket, three point hitch, pto, single hydraulic remote outlet, draw bar, 9.5-24 front tires, 16.9-28 rear tires, meter reading: 86 hrs

2007 Kubota L3240 (4x4), sn:70446, equipped w/ Rops Canopy, 3 cyl (35HP) engine, sync shuttle transmission, work light package, Kubota LA514 front loader attachment, quick attach loader bucket, three point hitch, pto, draw bar, 10-16.5 front tires, 420/70-24 rear tires, meter reading: 709 hrs

1997 John Deere 6300, sn:L06300P170243, equipped w/ Enclosed Cab, 4 cyl (90HP) engine, PowrQuad 16 speed transmission, 2wd, work light package, three point hitch, pto, draw bar, dual hyd remote valves, Alamo slope mower attachment, 5 ft cutting deck, 18.4-34 rear tires, meter reading: 11,943 hrs

2003 John Deere 6220, sn:365477L, equipped w/ Rops Canopy, 4 cyl (90HP) engine, 12 speed transmission, work light package, 540 PTO, three point hitch, 90 inch and 77 inch flail mower attachments, 36-11 front tires, 16.9-30 rear tires

2003 John Deere 6220, sn:365055L, equipped w/ Rops Canopy, 4 cyl (90HP) engine, 12 speed transmission, work light package, 540 PTO, three point hitch, 90 inch and 77 inch flail mower attachments, 36-11 front tires, 16.9-30 rear tires

John Deere 5400 (4x4), sn:252207, equipped w/ Roll Bar, 3 cyl (68HP) engine, 12 speed transmission, brush guard, work light package, locking differential, plumbed for loader attachment, three point hitch, pto, dual hydraulic remote outlets, draw bar, meter reading: 6,930 hrs

2006 New Holland TD95D (4x4), sn:HJD072666, equipped w/ Rops Canopy, 4 cyl (90HP) engine, 8 speed transmission, work light package, 540 PTO, three point hitch, single hydraulic remote outlet, draw bar, 13.6-24 front tires, 18.4-34 rear tires

2007 New Holland TN70A, sn:HJE082779, equipped w/ Rops Canopy, 3 cyl (70HP) engine, 2wd, 12 speed transmission, 540 PTO, three point hitch, draw bar, dual hydraulic remote outlets, work light package, 9.5L-15 front tires, 16.9-24 rear tires, low meter hrs

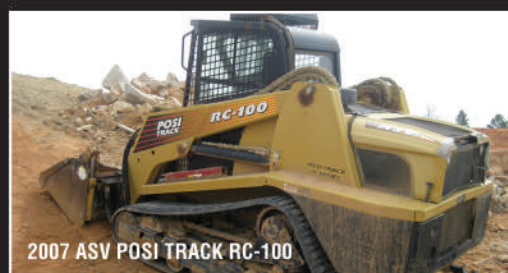
CONTINUED



2010 CAT 277C



2000 DEERE 210LE 4X4



2007 ASV POSI TRACK RC-100



2004 KUBOTA B21 4X4



2004 ROSCO SWEEP PRO



2006 SAKAI SV201TB



2007 KUBOTA L3240 4X4

Descriptions at our company website: www.meekinsauction.com





PIONEER PORTABLE 12 INCH WATER PUMP



2000 JLG 25RTS 4X2X2



2008 KUBOTA M5040 4X4



AMERICAN EXCAVATOR ROLLERS



GROVE AMZ50XT

Ford 340, equipped w/ Roll Bar, 3 cyl diesel engine, 2wd, brush guard, front loader attachment, go loader bucket, three point hitch, pto, 16.9-24 rear tires

Ford 1510, sn:UH02311, equipped w/ 3 cyl diesel engine, 2wd, three point hitch, pto, front weights, 8.3-24 rear tires

2000 Massey Ferguson 1225 (4x4), sn:JM0802, equipped w/ Roll Bar, Iseki 3 cyl (25HP) diesel engine, hydrostatic transmission, Massey Ferguson 1242 front loader attachment, loader bucket, three point hitch, pto, hydraulic remote outlets, belly mower, low meter hrs

Massey Ferguson 35, sn:SNW236293, equipped w/ 4 cyl engine, 2wd, brush guard, three point hitch, pto, draw bar, 13.6-28 rear tires

ROUGH TERRAIN CRANES

Grove RT58C (18 Ton), sn:48432, equipped w/ Enclosed Cab, Detroit 4 cyl diesel engine, 4x4x4, 3 sheave block, 26 ft - 70 ft 3 section boom, 23 ft luffing jib, hydraulic outriggers, 20.5-25 tires

TELESCOPIC FORKLIFTS

2005 JCB 506C, sn:SLP506C05E0588064, equipped w/ Rops Canopy, Perkins engine, 4x4x4, 6,000LB lift capacity, 36 ft reach, work light package, hydraulic frame tilt, 13.00-24 tires, 3,091 hrs

Ingersoll-Rand VR-843C, sn:184908, equipped w/ Rops Canopy, Cummins 4.5L engine, 4x4x4, 8,000LB lift capacity, 43 ft reach, work light package, hydraulic frame tilt, 13.00-24 tires, 5,716 hrs

Lull 6K-42, sn:97AG13N21-143, equipped w/ Rops Canopy, Cummins engine, 4x4x4, 6,000LB lift capacity, 42 ft reach, hydraulic frame tilt, meter reading: 4,096 hrs

Lull 522-4, sn:D7E6B4-161, equipped w/ Rops Canopy, Cummins engine, 4x4, 5,000LB lift capacity, 22 ft reach, hydraulic frame tilt, meter reading: 5,838 hrs

AERIAL BOOM AND SCISSOR LIFTS

1995 JLG 60HA (4x4) Aerial Boom Lift, sn:0300021514, equipped w/ 60 ft platform reach height capability, dual fuel engine

(propane/gasoline), 500LBS rated capacity, platform rotation, 8 ft basket, 15-19.5 tires, meter reading: 4,861 hrs

1996 Grove AMZ50XT Aerial Boom Lift, sn:38979, equipped w/ 50 ft platform reach height capability, dual fuel engine (propane/gasoline), 500LBS rated capacity, articulating boom, platform rotation, 4 ft basket, 12-16.5 all terrain tires, 4,809 hrs

2000 Sky Jack SJLB32 Aerial Boom Lift, sn:88171, equipped w/ 32 ft platform reach height capability, electric powered, 500LB rated capacity, platform rotation, 4 ft basket, 23/10.5-12 tires, meter reading: 1,043 hrs

2000 JLG 25RTS Scissor Lift, sn:0200068683, equipped w/ 25 ft platform reach capability, 4x2x2, dual fuel engine, slide out deck, remote, 12-16.5 all terrain tires

SEWER VACUUM UTILITY EQUIPMENT

SRECO-FLEXIBLE Truck Mounted Sewer Rodder System, sn:L932071, equipped w/ power unit, 1000 gallon tank, hoses and accessories, model number: HSRSR516TM, mounted on 1994 Chevrolet 3500 Dually Flatbed Truck, sn:1GBJC34K0RE164605, equipped w/ V8 5.7L gas engine, automatic transmission, 2wd, odometer reading: 70,579 miles

Vermeer Trailer Mounted Sewer Vacuum System, equipped w/ Kohler Command 25 engine, Sutorbilt blower unit, 1,000 gallon vacuum tank, mounted on tandem axle trailer, hoses and accessories, ST225/75R 15 tires

Vermeer Trailer Mounted Sewer Vacuum System, equipped w/ Kohler Command 18 engine, Dresser Roots 47URAI blower unit, 1,000 gallon vacuum tank, mounted on tandem axle trailer, hoses and accessories, ST225/75R 15 tires

CONSTRUCTION ATTACHMENTS/ SUPPORT EQUIPMENT

American Compaction Wheel Excavator Attachment, sn:AD04039, 36 inch working width capability, fits 40,000LB to 45,000LB size hydraulic excavators



MASSEY FERGUSON 1225 4WD





American Compaction Wheel Excavator Attachment, sn:AD02045, 36 inch working width capability, fits 40,000LB to 45,000LB size hydraulic excavators

Epoke S4900 Bulk Spreader Attachment, equipped w/ 8 to 12 meters spray width capability, spreads salt, sand, gravel material, fits dump truck dump bodies

Pioneer PP10X8S1 Water Pump, sn:6269, equipped w/ John Deere 8.1L engine, VS10x8x175, 10 inch connection, trailer mounted, meter reading: 1,943 hrs

Pullman Standard W0-69 Winch Attachment
General 660 Dig-R-Mobile Towable Hydraulic Hole Digger, sn:27028, equipped w/ Honda GX390 engine

Airco 300 Amp Super Hornet DC Arc Welder, sn:U492501, equipped w/ Continental engine, skid mounted

John Deere Worksite Pro Pallet Forks Attachment, fits skid steer loaders

Set of Forklift Pallet Forks

Stone SGC20G Groutzilla Grout Placement Attachment, sn:052012318, equipped w/ Honda GX390 engine, skid mounted, 20 cu ft capacity, swivel hopper, forklift pockets, unused

Long 1200 Backhoe Attachment, sn:5447, equipped w/ digging bucket, two lever controls, stabilizer legs, fits three point hitch tractors

LANDSCAPE - LAWN MAINTENANCE EQUIPMENT

Jacobsen G-Plex Series III Commercial Reel Mower, sn:FH000345, equipped w/ Kubota 3 cyl engine, hydrostatic transmission, three reel cutting heads

Kubota ZD-18 Riding Lawn Mower, sn:015787, equipped w/ diesel engine, hydrostatic transmission, zero turn radius

MTD Statesman Riding Lawn Mower, sn:1C291H20548, equipped w/ Briggs & Stratton 18HP engine, automatic transmission, fast attach series, 46 inch deck

John Deere LT155 Riding Lawn Mower, sn:MOL155B145445, equipped w/ Kohler 15HP engine, hydrostatic transmission, twin touch automatic series, 38 inch deck

John Deere L120 Automatic Riding Lawn Mower, sn:GXL120A028903, equipped w/ Briggs & Stratton 20HP Intek twin engine, 48 inch cutting deck

AGRICULTURAL EQUIPMENT & ATTACHMENTS

International Harvester 1440 Axial-Flow Combine, sn:1680230U040317, equipped w/ Enclosed Cab, 6 cyl (135HP) engine, hydrostatic trans-

mission, 2wd, work light package, 145 grain tank capacity, 28L-26 front tires, 9.5-24 rear tires, meter reading: 4,383 hrs

International Harvester 820-15 Grain Header, sn:1480103U016106, equipped w/ 15 ft working width capability, dividers, fits IH 1440 size combines

(4) Alamo SH88 Industrial Flail Mowers, equipped w/ 88 inch cutting width capability, pto driven, traffic job safety sign accessory, fits three point hitch tractors

John Deere 566-5X6 Round Hay Baler, sn:E00566X117191, equipped w/ 61.6 x 72 inch bale size capability, eight belts, pto driven, hydraulic controls, pull type, *note: monitor located in office

John Deere 350 Sickle Mower, sn:E00350X661277, equipped w/ 9 ft cutting bar, pto driven, fits three point hitch tractors

2012 Tarter 6 FT Rotary Cutter, equipped w/ guide wheel, unused, fits three point hitch tractors

(2) 2012 Tarter 5 FT Rotary Cutters, equipped w/ guide wheel, pto driven, unused, fits three point hitch tractors

(2) 2012 Tarter 4 FT Pull Type Rotary Cutters, pto driven, unused attachment

(3) 2012 Tarter 72 Inch Finish Mowers, equipped w/ 6 ft deck, pto driven, guide wheels, unused, fits three point hitch tractors

(2) 2012 Tarter Field Cultivators, equipped w/ 6 ft working width capability, (13) adjustable S-Curve tines, unused, fits three point hitch tractors

(3) 2012 Tarter Yard Plugger Attachments, equipped w/ 5 ft working width capability, unused, fits three point hitch tractors

(12) 2012 Tarter Bucket-Mount Super Hay Spear Attachments

(6) 2012 Tarter Front Adjustable Super Hay Spears, equipped w/ 2,200LB lift capacity, sliding mount brackets, unused, fits front end loaders

2012 Tarter Heavy-Duty Hay Lifter, equipped w/ 2,200LB lift capacity, unused, fits three point hitch tractors

FORESTRY EQUIPMENT

1998 Hydro-Ax 711EX Feller Buncher, sn:6783, equipped w/ A/C Cab, forestry rops package, John Deere 6081 engine, hydrostatic transmission, work light package, forestry special tires, Koehring Waterous feller buncher saw head, meter reading: 7,344 hrs

STONE SGC20G GROUT PLACEMENT ATTACHMENT UNUSED



GENERAL 660 DIG-R-MOBILE



JOHN DEERE 350 SICKLE MOWER



INTERNATIONAL HARVESTER 1440



JOHN DEERE 566-5X6



INTERNATIONAL HARVESTER 820-15

Descriptions at our company website: www.meekinsauction.com





1997 PETERBILT 377



(1 OF 3) 2007 INT 7600 DAY CABS



2007 PETERBILT 379



2005 KENWORTH T800



(1 OF 5) 2008 INT PROSTAR PREMIUM EAGLES



2006 KENWORTH T800



2007 MACK CXN613 VISION

TRANSPORTATION EQUIPMENT

A Partial List to Date Includes the Following.

DAY CAB TRUCK TRACTORS - TANDEM AXLE

2007 Peterbilt 379, sn:1XP5DB9X77D736067, equipped w/ Cat C15 Acert (475HP) engine, Eaton Fuller 10 speed transmission, cruise, engine brake, differential lock, fifth wheel slide, 12,000LB front axle, 38,000LB rear axles, air ride suspension, Alcoa rims, aluminum buds, hydraulic wet line kit, odometer reading: 427,481 miles

1997 Peterbilt 377, sn:1XPCDB9X4VN438834, equipped w/ Cat 3406 (380HP) engine, Eaton Fuller 10 speed transmission, cruise, engine brake, 12,000LB front axle, 38,000LB rear axles, air ride suspension, Tulsa 50 Ton winch attachment, odometer reading: 676,441 miles

2007 Mack CXN613 Vision, sn:1M1AK06Y47N021376, equipped w/ Mack AC-427HP engine, Meritor 10 speed transmission, cruise, engine brake, differential lock, fifth wheel slide, 210 wheel base, 12,000LB front axle, 40,000LB rear axles, aluminum wheels, blower, hydraulic wet line kit

2006 Kenworth T800, sn:1XKDB9X86J123375, equipped w/ Cat C15 Acert (475HP) engine, Eaton Fuller 10 speed transmission, cruise, engine brake, differential lock, fifth wheel slide, 3.90 rear axle ratio, 12,000LB front axle, 36,000LB rear axles, air

ride suspension, dual hydraulic wet line kit, odometer reading: 41,428 miles, *note: new engine installed around 300,000 miles

2005 Kenworth T800, sn:1XKDDU8X15J080610, equipped w/ Cat C13 (430HP) engine, Eaton Fuller automatic transmission, cruise, 3-stage engine brake, differential lock, fifth wheel slide, 3.36 rear axle ratio, gvw rating: 46,000LBS, gw rating: 80,000LBS, air ride suspension, hydraulic wet line kit

2007 International 7600, sn:1HSWX5BR97J536440, equipped w/ Cat C13 Acert (430HP) engine, Eaton Fuller 10 speed transmission, cruise, 3 stage engine brake, differential lock, suspension dump, fifth wheel slide, 480 wheel base, 12,000LB front axle, 40,000LB rear axles, air ride suspension, dual hydraulic wet line kit, odometer reading: 245,274 miles

2007 International 7600, sn:1HSWXAHR87J466608, equipped w/ Cummins ISM-450HP engine, Eaton Fuller 10 speed transmission, cruise, 3 stage engine brake, differential lock, suspension dump, fifth wheel slide, 480 wheel base, 12,000LB front axle, 40,000LB rear axles, air ride suspension, dual hydraulic wet line kit, odometer reading: 399,765 miles

2006 International 7600,

sn:1HSWYAHR16J219992, equipped w/ Cummins ISM-450HP engine Eaton Fuller 10 speed transmission, cruise, 3 stage engine brake, differential lock, suspension dump, fifth wheel slide, 209 wheel base, 12,000LB front axle, 40,000LB rear axles, air ride suspension, dual hydraulic wet line kit, odometer reading: 373,469 miles

2007 International 9200i,

sn:2HSCESBR97C488106, equipped w/ Cat C13 Acert (525HP) engine, Eaton Fuller automatic transmission, cruise, 3 stage engine brake, power windows and locks, power divider lock, suspension dump, fifth wheel slide, 475 wheel base, 12,000LB front axle, 40,000LB rear axles, air ride suspension, dual hydraulic wet line kit, odometer reading: 192,142 miles

2007 International 9200i,

sn:2HSCESBR27C488108, equipped w/ Cat C13 Acert (525HP) engine, Eaton Fuller automatic transmission, cruise, 3 stage engine brake, power windows and locks, power divider lock, suspension dump, fifth wheel slide, 475 wheel base, 12,000LB front axle, 40,000LB rear axles, air ride suspension, dual hydraulic wet line kit, odometer reading: 190,307 miles

2008 International Prostar Premium Eagle,

sn:2HSCUAPR58C539463, equipped w/ Cummins ISX-435ST (435HP) engine, Eaton Fuller 10 speed transmission, cruise, 3 stage engine brake, suspension dump, fifth wheel slide, power windows and locks, 480 wheel base, 12,000LB front axle, 40,000LB rear axles, air ride suspension, dual hydraulic wet line kit, odometer reading: 187,824 miles





2008 International Prostar Premium Eagle, sn:2HSCAPR78C539421, equipped w/ Cummins ISX-435ST (435HP) engine, Eaton Fuller 10 speed transmission, cruise, 3 stage engine brake, suspension dump, fifth wheel slide, 475 wheel base, 12,000LB front axle, 40,000LB rear axles, air ride suspension, dual hydraulic wet line kit, odometer reading: 216,696 miles

2008 International Prostar Premium Eagle, sn:2HSCUAPR28C539808, equipped w/ Cummins ISX-435ST (435HP) engine, Eaton Fuller 10 speed transmission, cruise, 3 stage engine brake, suspension dump, fifth wheel slide, power windows and locks, 475 wheel base, 12,000LB front axle, 40,000LB rear axles, air ride suspension, hydraulic wet line kit, odometer reading: 198,077 miles, *note: inoperable, bad engine, missing parts, needs repairs****

2008 International Prostar Premium Eagle, sn:2HSCUAPR98C539806, equipped w/ Cummins ISX-435ST (435HP) engine, Eaton Fuller 10 speed transmission, cruise, 3 stage engine brake, suspension dump, fifth wheel slide, power windows and locks, 475 wheel base, 12,000LB front axle, 40,000LB rear axles, air ride suspension, hydraulic wet line kit, odometer reading: 198,899 miles, *note: inoperable, bad engine, missing parts, needs repairs****

2008 International Prostar Premium Eagle, sn:2HSCUAPR08C539807, equipped w/ Cummins ISX-435ST (435HP) engine, Eaton Fuller 10 speed transmission, cruise, 3 stage engine brake, suspension dump, fifth wheel slide, power windows and locks, 475 wheel base, 12,000LB front axle, 40,000LB rear axles, air ride suspension, hydraulic wet line kit, odometer reading: 199,676 miles, *note: inoperable, bad engine, missing parts, needs repairs****

SLEEPER CAB TRUCK TRACTORS – TANDEM AXLE

2005 Peterbilt 387, sn:1XP7DB9X35D838777, equipped w/ Cat C15 (410/550HP) engine, Eaton Fuller Ultra Shift automatic transmission, cruise, engine brake, fifth wheel slide, 12,000LB front axle, 36,000LB rear axles, air ride suspension, Alcoa rims, odometer reading: 936,260 miles

2007 International 9400i, sn:2HSCNAHR97C473218, equipped w/ Cummins ISM-410HP engine, Eaton Fuller 10 speed transmission, cruise, 3 stage engine brake, suspension dump, power divider lock, fifth wheel slide, 585 wheel base, 12,000LB front axle, 40,000LB rear axles, air ride suspension, hydraulic wet line kit, odometer reading: 167,842 miles

2007 International 9400i, sn:2HSCNAHR67C473211, equipped w/ Cummins ISM-410HP engine, Eaton Fuller 10 speed transmission, cruise, 3 stage engine brake, suspension dump, power divider lock, fifth wheel slide, 585 wheel base, 12,000LB front axle, 40,000LB rear axles, air ride suspension, hydraulic wet line kit, odometer reading: 290,064 miles

2007 International 9400i, sn:2HSCNAHR17C473214, equipped w/ Cummins ISM-410HP engine, Eaton Fuller 10 speed transmission, cruise, 3 stage engine brake, suspension dump, power divider lock, fifth wheel slide, 585 wheel base, 12,000LB front axle, 40,000LB rear axles, air ride suspension, hydraulic wet line kit, odometer reading: 600,104 miles

DUMP TRUCKS – QUAD AXLE

2001 Sterling LT9513, sn:2FZJEWEB41AH48698, equipped w/ Cat C-12 (410HP) engine, Roadranger 10 speed transmission, cruise, differential lock, 18,000LB front axle, 40,000LB rear axles, Watson & Chalin steerable air lift 3rd and 4th pusher axles,

13,200LB per lift axle, gvwr rating: 71,200LBS, OX 19.5 ft (18-20 yd) steel dump body, double frame, Tuff-Trac heavy duty suspension, Mountain Tarp electric tarp system, odometer reading: 482,298 miles

DUMP TRUCKS – TANDEM AXLE

1986 GMC General, sn:1GDT9F4R1GV503205, equipped w/ Cat 3406B (400HP) engine, Fuller 9-speed transmission, differential lock, 212 wheel base, double frame, 12,000LB front axle, 38,000LB rear axles, spring suspension, 15 ft steel dump body

DUMP TRUCKS – SINGLE AXLE

1996 Chevrolet Kodiak, sn:1GBM7H1JXTJ101262, equipped w/ Cat 3116 (215HP) engine, 6 speed transmission, air brakes, 12,000LB front axle, 21,000LB rear axle, Godwin 10 ft steel dump body, tarp system, spring suspension, tow package, odometer reading: 214,362 miles

1994 International 4900, sn:1HTS-DAAPXSH605973, equipped w/ DT466 engine, 5x2 manual transmission, Adkins 14 ft dump body, tarp system, tow package, odometer reading: 89,516 miles

1993 International 4900, sn:1HTSDPNP9PH465886, equipped w/ DT466 engine, 5x2 manual transmission, Adkins 14 ft dump body, tarp system, tow package, odometer reading: 117,665 miles

1992 International 4900, sn:1HTSDPNP3NH464486, equipped w/ DT466 engine, 5x2 manual transmission, Adkins 14 ft dump body, tarp system, tow package, odometer reading: 135,108 miles

FLATBED TRUCKS

2004 International 4300, sn:1HTMMAAM54H596584, equipped w/ DT466 engine, automatic transmission, cruise, 8,000LB front axle, 17,500LB rear axle, 12 ft deck, 6 ft beavertail, loading ramps

1998 Ford F-Series, sn:1FDNF80C8WVA31128, equipped w/ Cummins 5.9L engine, Allison automatic transmission, 207 wheel base, 7,000LB front axle, 19,000LB rear axle, 12 ft deck, 4 ft beavertail, Gorilla-Lift loading tailgate, 113,142 miles

1994 Chevrolet 3500 Dually, sn:1GBJC34K6RE179738, equipped w/ 5.7L V8 gas engine, 5 speed transmission, 12 ft body

EROSION CONTROL TRUCKS

1981 Mack R686ST Hydroseeder Truck, sn:1M2N178Y7BA066625, equipped w/ Mack E6-350HP engine, 6-speed overdrive transmission, Finn T170 Hydroseeder, sn:RN1785, Kubota engine, 1,500 gallon tank, operator platform, Hannay hose reel, spray cannon, camelback suspension, tandem axle, tow package, odometer reading: 286,981 miles

BUCKET TRUCKS

2000 Freightliner FL80 – Altec AA755L, sn:1FV6JJB3YHG79262, equipped w/ Cat 3126 engine, 7 speed transmission, air condition cab, 35,000LB gvs rating, Braden front winch, locking rear end, Altec AA755L aerial boom, sn:0300BZ1076, 60 ft working height reach capability, material handler, tow package, odometer reading: 164,497 miles

2000 Ford F-750XL Superduty Hi-Ranger 5TC, sn:3FDXF75H3YMA36418, equipped w/ Cat engine, 7 speed transmission, air condition cab, Hi-

CONTINUED



(3) INTERNATIONAL 4900 FLATBED DUMPS



Descriptions at our company website: www.meekinsauction.com





2006 FORD F-550XL SUPERDUTY MECHANICS



(2) 2007 FORD F-250XL SUPERDUTY PICKUPS



(3 OF 4) 2004 FORD F-550XL SUPERDUTY SERVICE TRUCKS



2000 LIDDELL C-50A



2004 EAGER BEAVER 50GSL-3



(2 OF 6) 2009 CLUB CAR PRECEDENTS



2005 FORD F-550XL SUPERDUTY 4X4

Ranger 5TC aerial boom, sn:2000511841, 60 ft working height reach capability, material handler, tow package, odometer reading: 118,134 miles

FUEL TANKER TRUCKS

1979 Chevrolet C70 2,000 Gallon, sn:C17DB9V122112, equipped w/ V8 gas engine, 5x2 manual transmission, gvwr: 27,500LBS, Tuthill meter register, Reelcraft hose and reel, nozzle

MECHANIC - SERVICE UTILITY TRUCKS

2006 Ford F-550XL Superduty Dually, sn:1FDAF56P46EB16247, equipped w/ Powerstroke V8 6.0L turbo diesel engine, 6 speed transmission, 2wd, 165 wheel base, air condition, pto, Adkins service body, Auto Crane 3203H service crane, outriggers, storage compartments and drawers, hose reels, vice, 19.5 tires, tow package, odometer reading: 307,688 miles

2005 Ford F-550XL Superduty Dually (4x4), sn:1FDAF57P15EC88930, equipped w/ Powerstroke V8 turbo diesel engine, automatic transmission, cruise, cd/fm/am stereo, ac/heat, Knapheide service body, Ingersoll-Rand air compressor, fuel and lube product tanks, hose reels, Wilton 4 inch jaw vise, Miller Bobcat 250 Welder 10,000 Watt Generator (34 hrs), tow package, odometer reading: 148,113 miles

2004 Ford F-550XL Superduty Dually, sn:1FDAF56P14EC31479, equipped w/ Powerstroke V8 6.0L turbo diesel engine, 6 speed transmission, 2wd, air condition, fm/am stereo, Adkins service body, tow package, odometer reading: 102,971 miles

2004 Ford F-550XL Superduty Dually, sn:1FDAF56P14EC31482, equipped w/ Powerstroke V8 6.0L turbo diesel engine, 6 speed transmission, 2wd, air condition, fm/am stereo, Adkins service body, tow package, odometer reading: 108,473 miles

2004 Ford F-550XL Superduty Dually, sn:1FDAF56P04ED36305, equipped w/ Powerstroke V8 6.0L turbo diesel engine, 6 speed transmission, 2wd, air condition, fm/am stereo, Adkins service body, tow package

2004 Ford F-550XL Superduty Dually, sn:1HTS-DPNP9PH465886, equipped w/ Powerstroke V8 6.0L turbo diesel engine, 6 speed transmission, 2wd, air condition, fm/am stereo, tow package, odometer reading: 215,455 miles

2007 Ford F-350XL Superduty (4x4), sn:1FDSW35P07EA63767, equipped w/ Powerstroke V8 6.0L turbo diesel engine, 6 speed transmission, front winch accessory, air condition, fm/am stereo, Reading 9 ft service body, tow package, odometer reading: 217,793 miles

PICKUPS - VANS - SPORT UTILITY VEHICLES

2007 Ford F-250XL Superduty Pickup, sn:1FTSF20P87EB15748, equipped w/ Powerstroke V8 6.0L turbo diesel engine, automatic transmission 2wd, ac/heat, stereo, tow package, odometer reading: 256,954 miles

2007 Ford F-250XL Superduty Pickup, sn:1FTSF20P77EA51380, equipped w/ Powerstroke V8 6.0L turbo diesel engine, automatic transmission 2wd, ac/heat, stereo, tow package, odometer reading: 266,461 miles

2003 Ford F-250XL Superduty Extended Cab Pickup, sn:1FTNX20F63EA64150, equipped w/ Powerstroke 7.3L V8 diesel engine, automatic transmission, cruise, 2wd, power windows and locks, short bed, tow package

2001 Chevrolet 1500 Silverado Pickup, sn:1GCEC14V01Z293193, equipped w/ Vortec 4.8L engine, automatic, cruise, 2wd, long bed, 254,521 miles

2005 Ford E-350 Superduty Commercial Cargo Van, sn:1FBNE31L45HA98335, equipped w/ Triton V8 engine, automatic transmission, ac/heat, storage racks, odometer reading: 281,359 miles

2004 Ford E-350 Superduty Commercial Cargo Van, sn:1FBNE31L34HA09465, equipped w/ Triton V8 engine, automatic transmission, ac/heat, storage racks, odometer reading: 248,451 miles

1997 Dodge Ram 3500 Commercial Cargo Van, sn:2B7KB31Z5VK594950, equipped w/ 5.9L V8 gas engine, automatic transmission, odometer reading: 173,362 miles

1995 Chevrolet Chevy Van 20 Passenger Van, sn:1GCEG25H8SF161935, equipped w/ 5.0L V8 gas engine, automatic transmission, cruise, 11 passenger, odometer reading: 284,134 miles

1988 Chevrolet Tahoe LT Sport Utility Vehicle, sn:1GNEC13RWJ343286, equipped w/ gas engine, automatic, cruise, 2wd, leather interior, cargo rack, tow hitch, odometer reading: 194,823 miles

LOWBOY TRAILERS - TRI AXLE

2004 Eager Beaver 50GSL/3, sn:112SD248X4L060996, equipped w/ 50-Ton hauling capability, non ground bearing, 102 inch x 24 ft load deck, outriggers, all wheel ABS, boom trough, aluminum rims, Ridewell air ride suspension, air lift third axle, 255/70R 22.5 tires

2000 Liddell C-50A, sn:1Z9267817YE094014, equipped w/ 50-Ton hauling capability, non ground bearing, 102 inch x 23 ft load deck, air ride suspension, 255/70R 22.5 tires

1984 Rogers CT3H40DSF22-67-R20RS, sn:20089, equipped w/ 40-Ton hauling capability, ground bearing, pony motor, 8 ft x 22 ft load deck, spring suspension, deck over wheels, Michelin 285/70R 22.5 tires

LOWBOY BEAM TRAILERS - TRI AXLE

Talbert T3D-60-HRG-RA, sn:4161, equipped w/ 60-Ton hauling capability, non ground bearing, 25 ft length, spring suspension, plumbed for flip axle, 11R 22.5 tires

EQUIPMENT TAG TRAILERS

Eager Beaver 20HA, sn:1120HA228FT150011, equipped w/ 20-Ton hauling capability, air brakes, 8 ft x 19 ft load deck, 5 ft beavertail, loading ramps, tandem axle, 8.25 R 15 tires

1998 Terry Trailers 15-Ton, sn:820510TEQ00001506, equipped w/ 8 ft x 19 ft load deck, wood floor, 5 ft beavertail, loading ramps, tandem axle, LT245/75R 16 tires

Hardee 816LD, sn:784955, equipped w/ 8 ft x 16 ft load deck, steel floor, 4 ft beavertail, loading ramps, tandem axle, 7.00-15LT tires

END DUMP TRAILERS

2003 Rhodes RAF3960-2, sn:1A9AF39223P432209, equipped w/ 39 FT Aluminum frameless dump body, 50,000LB rear axles, gvwr rating: 70,000LBS, Hendrickson air ride suspension, Mountain Tarp system, tandem axle, 11R 24.5 tires

2005 City 38 FT Aluminum, sn:4DCC138B952AA1046, equipped w/ 40,000LB rear axles, gvwr rating: 80,000LBS, tandem spread axle, Hendrickson air ride suspension, tarp system, 11R 22.5 tires

1993 City 38 FT Aluminum, sn:4DCC139B7P2A20849, equipped w/ Mountain Tarp system, 40,000LB rear axles, tandem axle, air ride suspension, gvwr rating: 80,000LBS, 285/75R 24.5 tires

1995 Ravens 238A6672-338A69, sn:1R1D03820SJ095373, equipped w/ 38 ft aluminum dump body, 96 inch width, 45,000LB rear





axles, gvwr rating: 82,000LBS, tandem axle, spring suspension, tarp system, 285/75R 24.5 tires
1995 Southeast SEAD2246C, sn:1S9DT38ASL079927, equipped w/ 22 ft aluminum dump body, tarp system, gvwr rating: 80,000LBS, Tri Axle, rear spring suspension, Watson and Chalin air lift 3rd axle, 11R 24.5 rear dual tires
1992 East Grizzly, sn:1E1D2V28XNRE13502, equipped w/ 38 ft aluminum dump body, 36,000LB rear axles, gvwr rating: 80,000LBS, tandem spread axle, Aero tarp system, air ride suspension, 11R 24.5 tires
1986 East 28 FT Aluminum, sn:1E1D2T286GRF07447, equipped w/ 40,000LB rear axles, gvwr rating: 80,000LBS, tandem spread axle, air ride suspension, Mountain Tarp system, 11R 24.5 tires

WALKING-LIVE FLOOR TRAILERS

2000 East 50 FT, sn:1E1U1Z287YRF27571, equipped w/ 102 inch x 50 ft aluminum body, 106 inch sides, tandem axle, Keith Walking Floor system, 40,000LB rear axles, gvwr rating: 80,000LBS, tarp system, ICU bars, Reyco spring suspension, 11R 22.5 tires
1998 East 48 FT, sn:1E1U1Y287WRM24735, equipped w/ 102 inch x 48 ft aluminum body, 106 inch sides, tandem axle, Keith Walking Floor system, 36,000LB rear axles, gvwr rating: 80,000LBS, tarp system, ICU bars, air ride suspension, 11R 24.5 tires
1998 East 48 FT, sn:1E1U1Y283WRM24733, equipped w/ 102 inch x 48 ft aluminum body, 106 inch sides, tandem axle, Keith Walking Floor system, 36,000LB rear axles, gvwr rating: 80,000LBS, tarp system, ICU bars, air ride suspension, 11R 24.5 tires
1998 East 48 FT, sn:1E1U1Y285WRM24734, equipped w/ 102 inch x 48 ft aluminum body, 106 inch sides, tandem axle, Keith Walking Floor system, 36,000LB rear axles, gvwr rating: 80,000LBS, tarp system, ICU bars, air ride suspension, 11R 24.5 tires
1998 East 48 FT, sn:1E1U1Y288WRM24730, equipped w/ 102 inch x 48 ft aluminum body, 106 inch sides, tandem axle, Keith Walking Floor system, 36,000LB rear axles, gvwr rating: 80,000LBS, tarp system, ICU bars, air ride suspension, 11R 24.5 tires

2005 East 45 FT, sn:1E1U1X2895RF34853, equipped w/ 102 inch x 45 ft aluminum body, 106 inch sides, tandem axle, Keith Walking Floor system, 42,400LB rear axles, gvwr rating: 80,000LBS, tarp system, ICU bars, Reyco spring suspension, 11R 24.5 tires
2005 East 45 FT, sn:1E1U1X2865RF34857, equipped w/ 102 inch x 45 ft aluminum body, 106 inch sides, tandem axle, Keith Walking Floor system, 42,400LB rear axles, gvwr rating: 80,000LBS, tarp system, ICU bars, Reyco spring suspension, 11R 24.5 tires
1998 East 45 FT, sn:1E1U1X287WRB24920, equipped w/ 102 inch x 45 ft aluminum body, 106 inch sides, tandem axle, Keith Walking Floor system, 40,000LB rear axles, gvwr rating: 80,000LBS, tarp system, ICU bars, Reyco spring suspension, 11R 24.5 tires
1999 Somerset ALF-048, sn:1S94A4821XM006279, equipped w/ 102 inch x 48 ft aluminum body, 106 inch sides, tandem axle, Keith Walking Floor system, 45,000LB rear axles, gvwr rating: 80,000LBS, tarp system, ICU bars, spring suspension, 11R 22.5 tires
1999 Somerset ALF-048, sn:1S94A4826XM006410, equipped w/ 102 inch x 48 ft aluminum body, 106 inch sides, tandem axle, Keith Walking Floor system, 42,400LB rear axles, gvwr rating: 80,000LBS, tarp system, ICU bars, spring suspension, 11R 24.5 tires
1997 Somerset ALF-045, sn:1S94A4524VM006584, equipped w/ 102 inch x 45 ft aluminum body, 108 inch sides, tandem axle, Keith Walking Floor system, 42,400LB rear axles, gvwr rating: 80,000LBS, tarp system, ICU bars, spring suspension, 11R 24.5 tires
1997 Summit ALF-045, sn:1S8AL452XV0009644, equipped w/ 102 inch x 45 ft aluminum body, 106 inch sides, tandem axle, Keith Walking Floor system, 45,000LB rear axles, gvwr rating: 80,000LBS, tarp system, ICU bars, Hutchens spring suspension, 11R 24.5 tires

DRY VAN TRAILERS

1994 Stoughton AVW-535T-S-C, sn:1DW1A5326RS854305, equipped w/ 102 inch x 53 ft body, 13 ft 6 in height, gvwr rating: 68,080LBS, adjustable axles, spring suspension, tandem axle, 295/75R 22.5 tires
1987 Dorsey AIDT-86-LS, sn:1DTV11X28HW025499, equipped w/ 102 inch x 48 ft body, 40,000LB rear axles, gvwr rating: 67,470LBS, adjustable axles, spring suspension, tandem axle, 295/75R 22.5 tires

TRUCK PARTS AND ACCESSORIES

Adkins 108-90-T74 Enclosed Service Truck Body, sn:5850299, equipped w/ utility racks, 8 ft length, fits up to 15,000LB service utility trucks
North American Tool Company Shop Cherry Picker, sn:30593, equipped w/ 3 ton long ram jack, caster wheels
Large Quantity of Transport Chain, Binders, Straps
Portable Shop Rotating Engine Stand
NAPA 1-Ton Transmission Jack
Coats 10-10 Super Powerman Tire Changer
Air Works Portable Tire Bead Sealer
Large Selection of New Unused Commercial Truck Parts and Accessories (Engines, Transmissions, Bearings, Torque Converters, Brake Shoes, Fuel and Water Pumps, Filters, Hydraulic Hoses, Bushing Kits, Brass Truck Air Fittings, Exhaust Stacks, Aluminum Fuel Tanks, much, much, more) *visit website for detailed descriptions and pictures*

ALL TERRAIN VEHICLES - UTILITY CARTS - GOLF CARTS

2007 Kubota RTV900 (4x4) Utility Vehicle, sn:KRTV900A71081835, equipped w/ Rops Canopy, Kubota 3 cyl diesel engine, brush guard, light package, cargo body, 25 x 10.00-12 tires, meter reading: 2,379 hrs
2008 Club Car XRT 1200 Utility Vehicle, sn:AD0843-973733, equipped w/ Rops Canopy, gas engine, brush guard, light package, cargo body, turf master tires, meter reading: 4,052 hrs
(6) 2010 Club Car Precedent Golf Carts, equipped w/ Canopy, windshield, electric powered, 48 volt system, aluminum frame, two passenger, battery charger

OTHER ITEMS TO INCLUDE

Over 400 New/Unused Tools to be sold at 9:00 am, also including Compact Support Equipment, Welding Equipment, Industrial Shop Equipment, Industrial Hot Water Pressure Washers, Light Duty Generator Sets, Water Pumps, Contractor Grade Hand Tools and Accessories, Job Safety Equipment and Supplies, Truck and Automobile Accessories, Equipment Parts and Accessories, antiques, misc items - see website for complete listing with descriptions and pictures meekinsauction.com - Inventory Updated Daily



2007 KUBOTA RTV900 4X4



(12) ALUMINUM LIVE/WALKING FLOOR TRAILERS AVAILABLE



2003 RHODES RAF3960-2 END DUMP

Descriptions at our company website: www.meekinsauction.com





2001 ROADTEC RX-50B MILLING MACHINE



2004 EAGER BEAVER 50GSL-3

www.meekinsauction.com

For up-to-date auction inventory, with pictures and descriptions, visit our company website



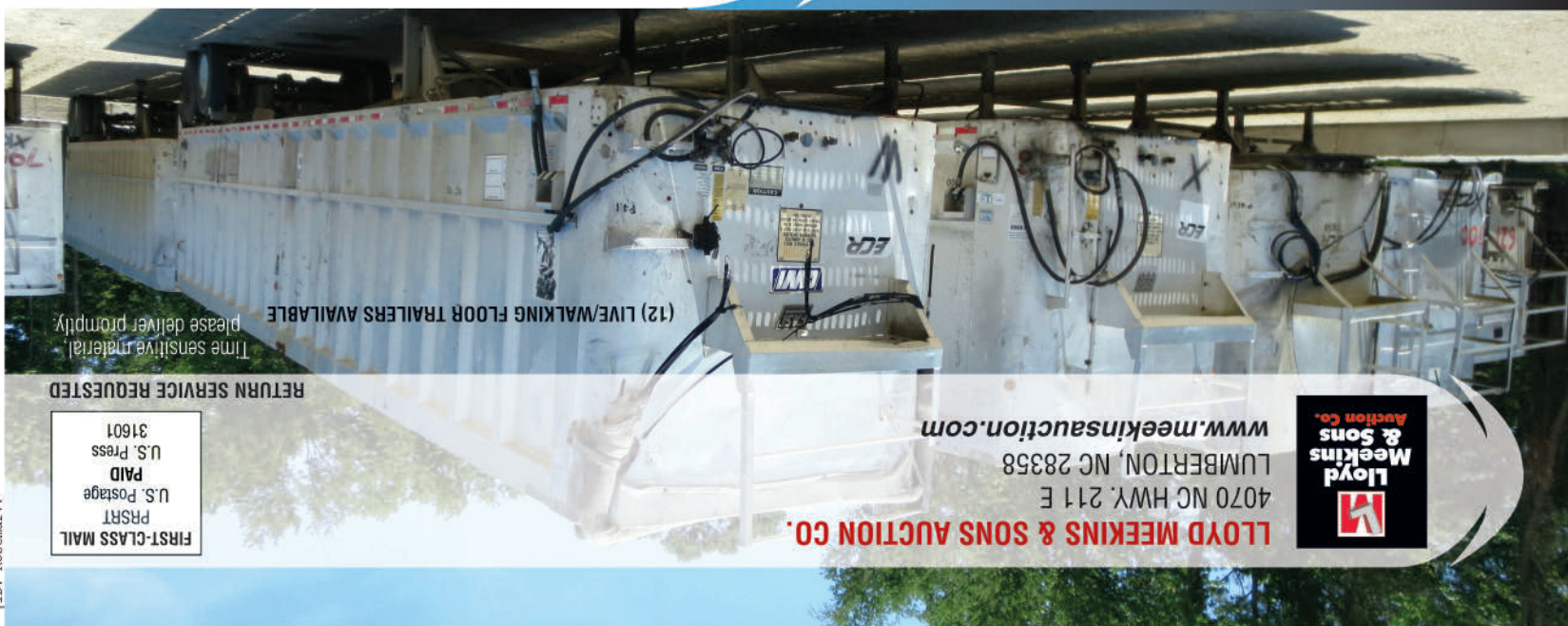
2008 KUBOTA M5040 4X4



2005 CAT 322CL LONG REACH

ABSOLUTE AUCTION

WEDNESDAY, JULY 24, 2013
9:00 AM
MOUNT AIRY, NC



(12) LIVE/WALKING FLOOR TRAILERS AVAILABLE
Time sensitive material.
please deliver promptly.

RETURN SERVICE REQUESTED

FIRST-CLASS MAIL
PSRT
U.S. Postage
PAID
U.S. Press
31601

LOYD MEEKINS & SONS AUCTION CO.

4070 NC HWY. 211 E
LUMBERTON, NC 28358
www.meekinsauction.com

