

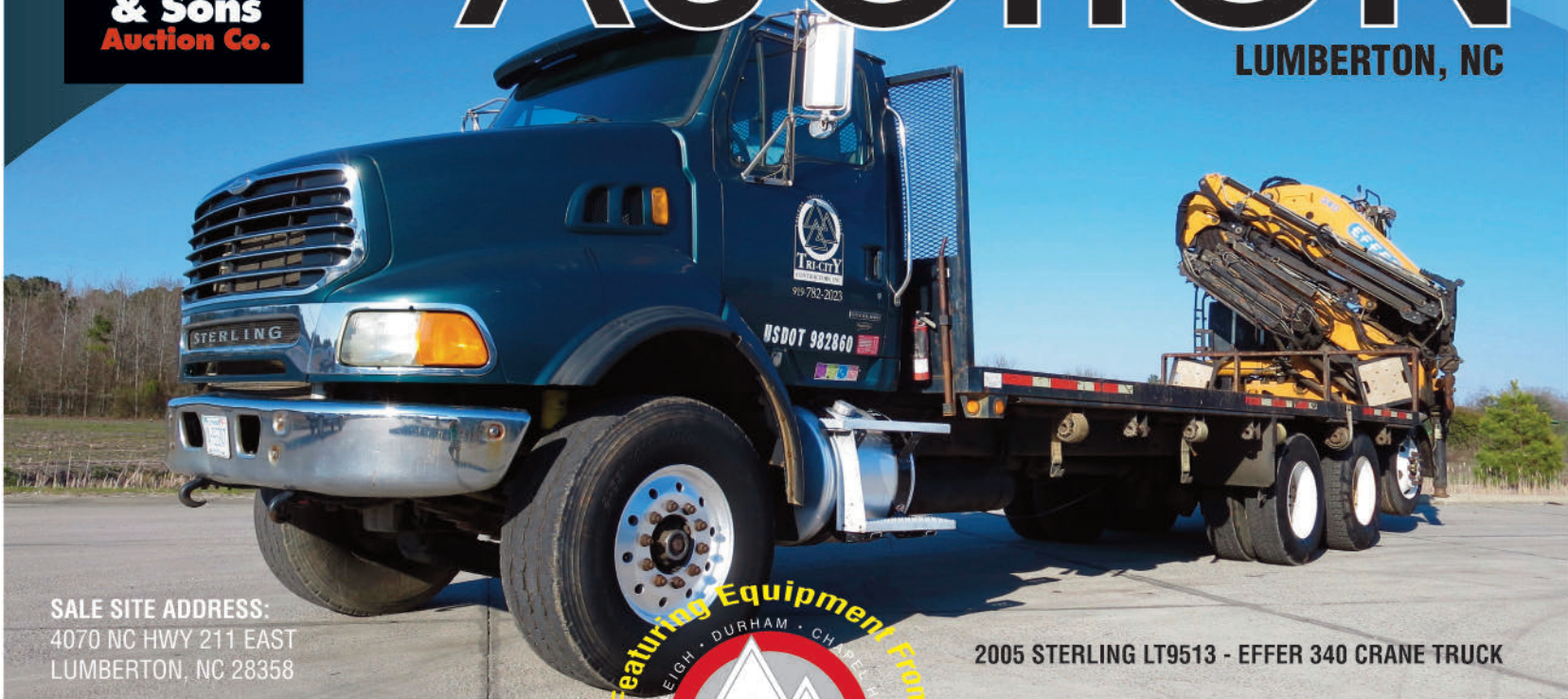
out 1 Creator: QuarkXPress(R) 8.5 Last Modification: D:20140325102804-04'00' Producer: QuarkXPress(R) 8.5
 2400.0 dpi (Screened Data File POS, Right-Reading, Color-Steps, Std-OVP Simulated Spot Colors) [TRAP ABO:
 Cyan Magenta Yellow Black
 PS Version: 3015.102 HON Version 9.0 Revision 2 RSI. Ripced on Tuesday, March 25, 2014 10:29:24 AM



ANNUAL SPRING CONTRACTORS AUCTION

FRIDAY, APRIL 11, 2014 AT 8:00 A.M.

LUMBERTON, NC



SALE SITE ADDRESS:
 4070 NC HWY 211 EAST
 LUMBERTON, NC 28358

2005 STERLING LT9513 - EFER 340 CRANE TRUCK

Featuring Equipment from
 RALEIGH • DURHAM • CHASE



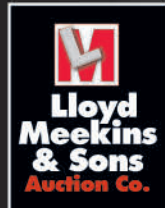
Major Public Auction featuring **CONSTRUCTION, TRANSPORTATION, and AGRICULTURAL** packages of equipment from well known regional contractors, farmers, dealers, and other owners. Large selection of Earth Moving Equipment, Agricultural Equipment, Support Equipment, Attachments, Heavy Duty Trucks and Trailers, Specialty Trucks, Pickups, and much more. Make plans today to attend, for this is one auction you will not want to miss!



2007 CAT 953D LOADER

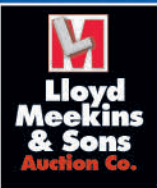


For detailed equipment description information, additional pictures, or to view full auction inventory, visit our company website meekinsauction.com



Auction Conducted By:
Lloyd Meekins & Sons Auction Company
 4070 NC Hwy 211 East - Lumberton, NC 28358
 Office Phone: 910.739.0547 • Office Fax: 910.738.1389
 Email: info@meekinsauction.com • NC Firm License #858





For detailed equipment description information, additional pictures, or to view full auction inventory, visit our company website meekinsauction.com



2002 STERLING LT9513 - NATIONAL 1400 SERIES 35 TON TRUCK CRANE

ANNUAL SPRING CONTRACTORS

AUCTION

FRIDAY, APRIL 11, 2014 AT 8:00 A.M.

AUCTION TERMS

- Every Item is sold as-is, where is.
- No Guarantees or warranties, expressed or implied. This brochure is only a guide. PLEASE INSPECT EQUIPMENT BEFORE BIDDING!
- **NOTE:** If interested in one item, please contact to insure availability.
- **ADMINISTRATION FEE:** All purchased lots will be subject to an administrative fee of ten percent. **Online Bidders** will be charged an administrative fee of twelve percent on all online purchases.
- **PAYMENT TERMS:** All payments are made in US funds. Methods of payment are cash, wire transfer, certified/ cashiers check, or company/ personal check accompanied with bank letter guaranteeing payment to Lloyd Meekins & Sons Auction Company. Equipment will not be released from sale site until purchases have been paid in full.
- **SALES TAX EXEMPTION:** Buyers qualifying for sales tax exemption must present a copy of their sales tax I.D. numbers and complete a NC certificate of exemption (E595-e), or have a current exemption form on file, in order to be exempted from sales tax on applicable purchases.
- **SALES TAX:** The North Carolina Sales Tax (Robeson County) is 7.00% and applies to all sales, unless proper tax exemption forms are completed.
- **EXPORT EXEMPTIONS:** Buyers purchasing for export must complete and execute a NC affidavit of export (E599-C) for sales tax exemption. Items will not be released until this required document is received.
- **FOR THEIR SAFETY- NO CHILDREN ARE ALLOWED ON SALE SITE!**
- **VEHICLE TITLE INFO:** All title- item purchases will be charged a \$25 title-processing fee. All titles will be mailed out within 15 business days after payment has been received.
- **SALES REPRESENTATIVES AND OFFICE/SALE SITE MANAGERS:**
Trey Meekins • 910.258.4383 • trey@meekinsauction.com
Chris Cea • 910.633.8244 • chris@meekinsauction.com
E.B. Webb • 252.245.1405 • ebwebb@meekinsauction.com
Rona West, Office Manager • 910.739.0547 • rona@meekinsauction.com
Avery Brewer, Sale Site Manager • 910.608.9457
- **AUCTIONEERS:**
Lloyd "Mickey" Meekins Jr. #228
Lloyd "Trey" Meekins III #8137

INSPECTION/REGISTRATION/ EQUIPMENT REMOVAL DATES

- **EQUIPMENT INSPECTION DATE:** Thursday, April 10th, 2014 from 8:00 am until 5:00 pm
- **BIDDER REGISTRATION** Begins Tuesday, April 8th, 2014
- **REMOVAL OF EQUIPMENT DEADLINE:** All equipment must be removed from sale site by Thursday, May 8th, 2014. Equipment not removed by designated date, buyer may be charged storage fees upon discretion. Removal of equipment and insurance is the buyers responsibility. Meekins Auction Company employees will not load equipment into containers, dismantle machines, arrange for 3rd parties to assist in loading equipment, and will not load or operate loaders after dusk.
- **OFFICE AND YARD OPERATING HOURS:** Open Monday thru Friday 8:00 am until 5:00pm. Closed weekends.

DIRECTIONS TO SALE SITE

- From Interstate I-95, take EXIT 20, Follow out ROBERTS AVE/ NC-211 SOUTH for 3.1 miles; Turn LEFT onto EAST 5TH Street/NC-211 EAST, continue to follow for 1.1 miles; The sale site will be on right side of the road.

(Sale site is located 90 miles south of Raleigh, NC; 130 miles southeast of Charlotte, NC; 150 miles northeast of Columbia, SC; 325 miles northeast of Atlanta, GA; 650 miles north of Orlando, Florida.)

GPS Sale Site Location: 4070 East 5th Street, Lumberton, NC

ACCOMMODATIONS

- Holiday Inn (Auction Headquarters) 910.671.1166
- Hampton Inn 910.738.3332 • Fairfield Inn 910.739.8444
- Best Western 910.618.9799 • Comfort Suites 910.345.0260

AIRLINES/TRAVEL AGENCY

- Fayetteville Regional Airport (located 30 miles from auction site) www.airnav.com
- Raleigh/Durham International Airport (RDU) (located 90 miles from auction site) www.rdu.com
- Lumberton Municipal Airport (LBT) www.airnav.com/airport/LBT
- ITS Travel Agency: Ann Calhoun 843.669.8549

CONSIGNMENT INFORMATION

Interested in selling your equipment or trucks for this major auction, then choose Meekins Auction Company to turn your valuable assets into cash returns. Selling Benefits to help your company achieve the best return on the sale of your assets.

If you or your company are interested in selling your surplus equipment and trucks for this major auction, please contact us today!

Contact one of our Auction Sales Managers.

- Trey Meekins - Mobile: 910.258.4383 or email: trey@meekinsauction.com
- E.B. Webb - Mobile: 252.245.1405 or email: ebwebb@meekinsauction.com
- Chris Cea - Mobile: 910.633.8244 or email: chris@meekinsauction.com

CONSIGNMENTS WILL BE ACCEPTED UNTIL TUESDAY, APRIL 8TH, 2014

LOOKING TO LIQUIDATE YOUR SURPLUS EQUIPMENT AND TRUCKS FOR THIS MAJOR AUCTION!

- Flexible Contract Options (Net Guarantee, Straight Commission, Out-Right Purchase, Off Site Auctions)

NOTE: For auction schedule approximate selling times, please visit our company website at meekinsauction.com



Online Bidding Registration: register at equipmentfacts.com or call 908.788.2025

(Note: Online Registration must be completed before the date of the auction.)



1998 CAT 953C



(1 OF 10) 40 FT CONEX STORAGE CONTAINERS



(1 OF 2) 2002 CAT 236 SKID STEERS



WILLMAR 745 SELF-PROPELLED SPRAYER



2006 ALLMAND NIGHT-LITE PRO

2001 CASE IH 2388 4WD



(4) JOHN DEERE 750 NO-TILL GRAIN DRILLS



(1 OF 4) TEXAS BRAGG BP-20 EQUIPMENT TRAILERS



1995 VERMEER 935 CHIPPER



1997 TRAIL KING 25 TON



2005 KAUFMAN 25 TON



2000 INT 4900 MECHANICS



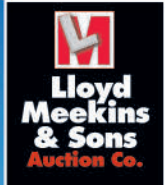
2000 NEW HOLLAND 555E

Descriptions at our company website: www.meekinsauction.com

Modification: Di:20140325101320-05:00' Producer: QuarXPress(R) 8.5 Creation Date: Di:20140325101320-05:00' WD 100 \rsi\luc\ C:175815 M:175875 Y:17580 X:175845 J bleed: 0.125 margin size: 0.375



Modification: D:\20140325\101450-04\00' Producer: QuarXPress(R) 8.5 Creation Date: D:\20140325\101320-05\00' WD 100 \rsi\luc\ C:\175615 X:\175675 Y:\17580 X:\175645] bleed: 0.125 margin size: 0.375
 \\\naspress-rip\01-Jobs\10139 Meekins\EPS-PDF for Rampage\10139 catalog.pdf Page 4 Title: Layout 1 Creator: QuarXPress(R) 8.5
 2400.0 dpi (Screened Data File POS, Right-Reading, Color-Seqs, Std-CMYK Simulated Spot Colors) [TRAP ABO:100 Scaling Percent
 PS Version: 3015.102 HQN Version 9.0 Revision 2 RSL, Ripped on Tuesday, March 25, 2014 10:16:15 AM
 Cyan Magenta Yellow Black
 ID: 105641V



2003 INT 7300 CREW CAB FLATBED DUMP



2004 EAGER BEAVER 50GSL-3



2005 CAT 312CL



2006 POLARIS RANGER 2X4 UTILITY CART



2005 STINGRAY 185LS 25TH ANNIVERSARY EDITION

4 Preview Complete Auction Inventory w/Pictures and Equipment



**Lloyd
Meekins
& Sons
Auction Co.**



A photograph of a 2006 Ditch Witch SK650 skid steer loader. The machine is orange and black, with a large metal bucket attached to the front. It is parked on a dirt surface. The text "2006 DITCH WITCH SK650" is overlaid in the top left corner of the image.



A yellow portable generator set, model GF3-30KW, is shown outdoors on a grassy area. The unit is a large, rectangular, yellow metal enclosure with a black base. It features a control panel on the right side with a digital display and various switches. The text "2010 PRO POWER GF3-30KW GENERATOR SET" is overlaid in white at the top left of the image.



A green 2001 John Deere 4710 tractor with a front loader, parked on a dirt field. The tractor is shown from a front-three-quarter view, highlighting its large yellow wheels and green body. The background shows a line of trees under a clear sky.



2012 NEW HOLLAND BOOMER 30 4X4



2002 NEW HOLLAND TN75 UTILITY



1999 FORD F-450XL SUPERDUTY DUALY



2001-1999 CHEVROLET C7500 CREW CAB DUMPS



Descriptions at our company website: www.meekinsauction.com

2005 JOHN DEERE 9650STS 4WD



ALSO FEATURING VACATION REAL ESTATE PROPERTY LOCATED IN BEECH MOUNTAIN, NC



Beech Mountain Chalet style home offering 3BR/2.5BA with loft on .35 acres near Ski Beech, Beech Mountain Golf Club and Buckeye Lake recreation center. Enjoy a great vacation home at a cool elevation and good location near all Beech Mountain amenities including skiing, golf, tennis, fishing, hiking, shopping, and more.

- **PROPERTY ADDRESS:** 702 Pine Ridge Road, Beech Mountain, NC 28604
- **COUNTY:** Watauga
- **YEAR BUILT:** 1968
- **TOTAL LIVING SQ FT:** 1,320
- **ADDITIONAL REMARKS:** located on state maintained road with great access, everything in the home has been inspected and up to code, many renovations and improvements completed in 2013
- **BUYERS PREMIUM:** 5 %
- **PAYMENT TERMS:** 10 % down payment on day of auction and remaining balance within 30 days

For more detailed information on this real estate property including pictures and additional property description information, visit our company website
meekinsauction.com

Auction Conducted By
LLOYD MEEKINS & SONS REALTY AND AUCTION COMPANY
 NCLN 858, Broker License 186605
 Sale Site: 4070 NC Hwy 211 East, Lumberton, NC 28358
 P: 910.739.0547 • F: 910.738.1389 • E: info@meekinsauction.com



2011 CHALLENGER MT475B 4X4



LONG HORN BARBECUE GRILL



MASSEY FERGUSON 50E SERIES 4X4 UTILITY



TIMBERKING TK560DS LOG LOADER



ATHEY 7-12D FORCE FEED LOADER



2014 MAGNUM 4000 GOLD SERIES PRESSURE WASHERS



TRAIL KING TK1500 SERIES 35 TON



E-Z TRAIL 475 GRAIN CART



UNUSED INDUSTRIAS AMERICA 2432 - 2424 OFF SET DISCS



JACK DANIELS COLLECTIBLE ITEMS



KINZE MT SERIES 12-ROW PLANTER



LARGE QTY OF UNUSED SEC ATTACHMENTS



AMERICAN AUGER 24-100S



JOHN DEERE HX14 ROTARY CUTTER



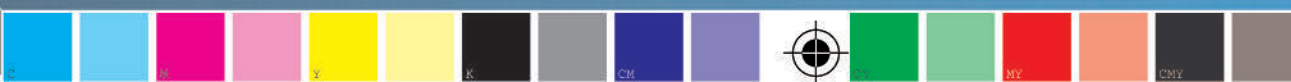
KEWANEE 1175 FLEX-WING HARROW

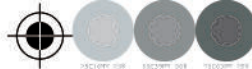


CASE IH 3900 - 496 FLEX-WING HARROWS

Descriptions at our company website: www.meekinsauction.com

\\uspress-rip\01_Jobs\10139 Meekins\EPF for Rampage\10139 catalog.pdf Page 7 Title: Layout 1 Creator: QuarXPress(R) 8.5 Creation Date: D:20140325:10:54:11-05:00' 2400.0 dpi (Screened Data File POS, Right-Reading, Color-Seps, Std-CMYK Simulated Spot Colors) [TRAP ABO:100 Scaling Percent Black] PS Version: 3015.102 HQN Version 9.0 Revision 2 RSL, Ripped on Tuesday, March 25, 2014 10:59:58 AM ID: ROSEMARV





2010 KENWORTH T600

For up-to-date auction inventory, with pictures and descriptions, visit our company website www.meekinsauction.com

ANNUAL SPRING TRACTORS AUCTION

FRIDAY, APRIL 11, 2014
8:00 AM
LUMBERTON, NC



2006 CAT 939C HYSTAT



LLOYD MEEKINS & SONS AUCTION CO.
4070 NC HWY. 211 E
LUMBERTON, NC 28358
www.meekinsauction.com

RETURN SERVICE REQUESTED

FIRST-CLASS MAIL
PSRST
U.S. Postage
PAID
U.S. Press
31601

Time sensitive
material, please
deliver promptly

\\uspress-rip\01_Jobs\110139 Meekins\PS-PPF for Rampage\110139 catalog.pdf Page 8 Title: Layout 1 Creator: QuarkXPress(R) 8.5 Creation Date: D:20140325:10:32:05-00' Modification: D:20140325:10:32:05-00' Producer: QuarkXPress(R) 8.5 Creation Date: D:20140325:10:32:05-00' WD 100 \\rsi\luc\ C:175815 M:175875 Y:17580 X:175845] bleed: 0.125 margin size: 0.375

\\uspress-rip\01_Jobs\110139 Meekins\PS-PPF for Rampage\110139 catalog.pdf Page 8 Title: Layout 1 Creator: QuarkXPress(R) 8.5 Creation Date: D:20140325:10:32:05-00' Modification: D:20140325:10:32:05-00' Producer: QuarkXPress(R) 8.5 Creation Date: D:20140325:10:32:05-00' WD 100 \\rsi\luc\ C:175815 M:175875 Y:17580 X:175845] bleed: 0.125 margin size: 0.375

