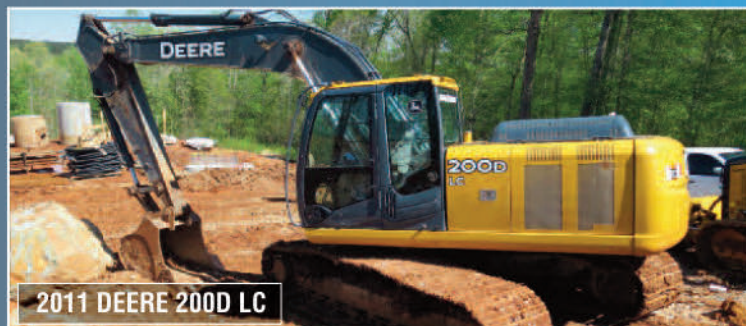




1 OF 2 - 2012 DEERE 210G LC EXCAVATORS



2011 DEERE 200D LC



1997 BELL B25B ARTICULATED DUMP



Deere 650 J



CAT 953D



Deere 544K

AUCTION TERMS

- Every Item is sold as-is, where is.
- No Guarantees or warranties, expressed or implied. This brochure is only a guide. PLEASE INSPECT EQUIPMENT BEFORE BIDDING!
- **NOTE:** If interested in one item, please contact to insure availability.
- **ADMINISTRATION FEE:** All purchased lots will be subject to an administrative fee of ten percent. **Online Bidders** will be charged an administrative fee of twelve percent on all online purchases.
- **PAYMENT TERMS:** All payments are made in US funds. Methods of payment are cash, wire transfer, certified/ cashiers check, or company/ personal check accompanied with bank letter guaranteeing payment to Lloyd Meekins & Sons Auction Company. Equipment will not be released from sale site until purchases have been paid in full.
- **SALES TAX EXEMPTION:** Buyers qualifying for sales tax exemption must present a copy of their sales tax I.D. numbers and complete a NC certificate of exemption (E595-e), or have a current exemption form on file, in order to be exempted from sales tax on applicable purchases.
- **SALES TAX:** The North Carolina Sales Tax (Robeson County) is 7.00% and applies to all sales, unless proper tax exemption forms are completed.
- **EXPORT EXEMPTIONS:** Buyers purchasing for export must complete and execute a NC affidavit of export (E599-C) for sales tax exemption. Items will not be released until this required document is received.
- **FOR THEIR SAFETY- NO CHILDREN ARE ALLOWED ON SALE SITE!**
- **VEHICLE TITLE INFO:** All title- item purchases will be charged a \$25 title-processing fee. All titles will be mailed out within 15 business days after payment has been received.
- **SALES REPRESENTATIVES AND SALE SITE MANAGERS:**
Trey Meekins, 910.258.4383, trey@meekinsauction.com
EB Webb, 252.245.1405, ebwebb@meekinsauction.com
Rona West, Office Manager, 910.739.0547, rona@meekinsauction.com
Avery Brewer, Sale Site Manager, 910.608.9457
- **AUCTIONEERS:** Lloyd "Mickey" Meekins, Jr. #228, Lloyd "Trey" Meekins, III #8137

INSPECTION/REGISTRATION/ EQUIPMENT REMOVAL DATES

- **EQUIPMENT INSPECTION DATE:** Thursday, July 31st, 2014 from 8:00 am until 5:00 pm
- **BIDDER REGISTRATION** Begins Tuesday, July 29th
- **REMOVAL OF EQUIPMENT DEADLINE:** All equipment must be removed from sale site by Thursday, August 28th, 2014. Loading docks are available. Equipment not removed by designated date, buyer may be charged storage fees. Removal of equipment and insurance is the buyers' responsibility.
- **OFFICE AND YARD OPERATING HOURS:** Open Monday thru Friday 8:00 am until 5:00pm. Closed weekends.

DIRECTIONS TO SALE SITE

- From Interstate I-95, take EXIT 20, Follow out ROBERTS AVE/ NC-211 SOUTH for 3.1 miles; Turn LEFT onto EAST 5TH Street/NC-211 EAST, continue to follow for 1.1 miles; The sale site will be on right side of the road.

(Sale site is located 90 miles south of Raleigh, NC; 130 miles southeast of Charlotte, NC; 150 miles northeast of Columbia, SC; 325 miles northeast of Atlanta, GA; 650 miles north of Orlando, Florida.)

GPS Sale Site Location: 4070 East 5th Street, Lumberton, NC

ACCOMMODATIONS

- Holiday Inn (Auction Headquarters) 910.671.1166
- Hampton Inn 910.738.3332
- Best Western 910.618.9799
- Fairfield Inn 910.739.8444
- Comfort Suites 910.345.0260

AIRLINES/TRAVEL AGENCY

- Fayetteville Regional Airport (located 30 miles from auction site) www.airnav.com
- Raleigh/Durham International Airport (RDU) (located 90 miles from auction site) www.rdu.com
- Lumberton Municipal Airport (LBT) www.airnav.com/airport/LBT
- ITS Travel Agency: Ann Calhoun 843.669.8549

CONSIGNMENT INFORMATION

Interested in selling your equipment or trucks for this major auction, then choose Meekins Auction Company to turn your valuable assets into cash returns. Selling Benefits to help your company achieve the best return on the sale of your assets.

If you or your company are interested in selling your surplus equipment and trucks for this major auction, please contact us today!

Contact one of our Auction Sales Managers.

- Trey Meekins - Mobile: 910.258.4383 or email: trey@meekinsauction.com
- E.B. Webb - Mobile: 252.245.1405 or email: ebwebb@meekinsauction.com

Consignments will be accepted until Tuesday, July 29th, 2014

LOOKING TO LIQUIDATE YOUR SURPLUS EQUIPMENT AND TRUCKS FOR THIS MAJOR AUCTION!

- Flexible Contract Options (Net Guarantee, Straight Commission, Out-Right Purchase, Off Site Auctions)

NOTE: For auction schedule approximate selling times, please visit our company website at meekinsauction.com



Online Bidding Registration: register at equipmentfacts.com or call 908.788.2025

(Note: Online Registration must be completed before the date of the auction.)

CONSTRUCTION EQUIPMENT

A Partial List to Date Includes the Following.

HYDRAULIC EXCAVATORS

2011 JOHN DEERE 350G LC, sn:1FF350GXTBE808009, equipped w/ A/C Cab, PowerTech PSX 9.0L (271HP) Tier 4 Emission engine, multi-language LCD operations monitor, work light package, 32 inch pads, plumbed auxiliary hydraulics, ACS 64 inch digging bucket. 2,807 hrs

2003 JOHN DEERE 330C LC, sn:082520, equipped w/ A/C Cab, John Deere 6081H (8.1L) engine power, auto-idle system, 32 inch pads, manual thumb attachment, work light package, digging bucket. 13,064 hrs

2005 JOHN DEERE 270C LC, sn:702249, equipped w/ A/C Cab, John Deere 6068H (6.8L) EPA Tier II emission engine, auto-idle system, 32 inch pads, manual thumb attachment, work light package, digging bucket, 8,103 hrs

2012 JOHN DEERE 210G LC, sn:1FF210GXHCE520320, equipped w/ A/C Cab, PowerTech 6.8L Tier 4 Emission engine, multi-language LCD operations monitor, auto-idle, work light package, 31.5 inch pads, Mann 48 inch digging bucket, 1.478 hrs

2012 JOHN DEERE 210G LC, sn:1FF210GXKCE520261, equipped w/ A/C Cab, PowerTech 6.8L Tier 4 Emission engine, multi-language LCD operations monitor, auto-idle, work light package, 31.5 inch pads, Mann 42 inch digging bucket, 1,754 hrs

2011 JOHN DEERE 200D LC, sn:1FF200DXCBD513390, equipped w/ A/C Cab, PowerTech 6068H (6.8L) Tier 3 Emission (159HP) engine, LCD operations monitor, auto-idle, work light package, 31.5 inch pads, Mann 42 inch digging bucket, 2,389 hrs

2008 JOHN DEERE 200D LC, sn:1FF200DX511044, equipped w/ A/C Cab, PowerTech 6068H (6.8L) Tier 3 Emission (159HP) engine, LCD operations monitor, auto-idle, front and top cab guards protection accessory, work light package, 31.5 inch pads.

front and rear topsoil guards, protection device, front right package, 30 hp motor, pump, plumbed auxiliary hydraulics, Mann 42 inch digging bucket, Mann hydraulic thumb attachment, meter reading: 3,371 hrs, *note: 70 hrs on new engine installed by RW Moore John Deere dealership, records available

2012 JOHN DEERE 85D, sn:1FF085DXCBG016697, equipped w/ A/C Cab, Isuzu 4LE2 engine, reduced tail swing radius, rubber tracks, work light package, backfill dozer blade, off-set boom, John Deere 36 inch (0.51 yd) digging bucket. 2,107 hrs

2010 JOHN DEERE 60D, sn:1FF060DX280421, equipped w/ A/C Cab, Yanmar 4TNV98 engine, work light package, reduced tail swing, rubber tracks, backfill dozer blade, plumbed auxiliary hydraulics, 36 inch bucket, hydraulic thumb attachment, 4,024 hrs

2012 HITACHI ZX210LC-5N, sn:1FDDCJ70JCE330098, equipped w/ A/C Cab, Isuzu 4HK1 (159HP) Tier 4 Emission engine, three work operation modes, work light package, 31.5 inch pads, Mann 42 inch digging bucket, 1.405 hrs

1998 CAT 325BL AMPHIBIOUS, sn:2JR00098, equipped w/ Enclosed Cab, Cat 3116 engine power, plumbed auxiliary hydraulics, work light package, Dean Pontoons, 56 inch pad width, 84 inch ditch cleanout bucket, 6.271 hrs

1997 CAT 313B SR, sn:9PR00527, equipped w/ A/C Cab, Mitsubishi engine, work light package, reduced tail swing, steel tracks, 20 inch pads, backfill dozer blade, plumbed auxiliary hydraulics. Cat 32 inch bucket. 7,106 hrs

1994 KOMATSU PC200LC-6L, sn:A80099, equipped w/ Enclosed Cab, Komatsu 6 cyl engine power, Avance series, work light package, 23.5 inch pads, 36 inch digging bucket. 11,519 hrs

1992 DAEWOO DH220LC, sn:0205, equipped w/ Daewoo D1146 engine, 32 inch pads, 42 inch bucket, manual thumb attachment, 4,755 hrs, *note: final drive inoperable, needs repairs

1999 DAEWOO SOLAR 70 SERIES III, sn:0179, equipped w/ John Deere 4039 engine power, steel tracks, 18 inch shoes, backfill dozer blade, 24 inch bucket, 5.739 hrs

2006 KUBOTA KX161-3 SUPER SERIES, sn:32062, Rops Canopy, Kubota 2.4L engine, 2 speed, dual pattern controls, auto idle, rubber tracks, backfill angle dozer blade, auxiliary hydraulics, CP 18 inch digging bucket. 4.879 hrs

2006 KUBOTA KX161-3 SUPER SERIES, sn:32419, Rops Canopy, Kubota 2.4L engine, 2 speed, dual pattern controls, auto idle, rubber tracks, backfill angle dozer blade, auxiliary hydraulics, CP 12 inch digging bucket

2005 KUBOTA KX121-3 SUPER SERIES, sn:31887, equipped w/ Rops Canopy, Kubota 2.2L engine, 2 speed, dual pattern controls, rubber tracks, work light package, backfill angle dozer blade, auxiliary hydraulics, 12 inch digging bucket. 1.038 hrs

CRAWLER DOZERS

2010 JOHN DEERE 750J LT, sn:T0750JX178919, equipped w/ Rops Canopy, PowerTech 6068H (168HP) turbocharged engine, hydrostatic transmission, cab-forward design series, work light package, 22 inch pads, 6 way dozer blade, 2,403 hrs

1998 JOHN DEERE 750C LGP, sn:839859, equipped w/ Rops Canopy, sweeps, rear screen protection, John Deere 6068T (6.8L) engine power, automatic dual-path hydrostatic drive transmission, 34 inch pads, work light package, 6 way dozer blade, 4,731 hrs

2012 JOHN DEERE 650K LGP, sn:1T0650KXTCE230243, equipped w/ Rops Canopy, PowerTech PWX 4045 (4.5L) Tier 4 Emission engine, automatic dual-path hydro-static transmission, keyless start/sealed-switch module, work light package, 28 inch pads, cab-forward design series, 6 way dozer blade, draw bar,
1 359 hrs

2011 JOHN DEERE 650J LGP, sn:1T0650JXLB0197395, equipped w/ A/C Cab, John Deere 4045 (4.5L) Tier 3 Emission engine, hydrostatic transmission, cab-forward design series, work light package, 24 inch pads, 6 way dozer blade, draw bar, 2 323 hrs

1994 CAT D6H LGP SERIES II, sn:5HF05751, equipped w/ Rops Canopy, Cat 3306 engine, power shift transmission, differential steering, 36 inch pads, hydraulic tilt dozer blade, draw bar, meter reading: 11,717 hrs, draw bar, *note: rebuilt engine installed in 2014

1986 CAT D6H LGP, sn:8YC00383, equipped w/ Rops Canopy, sweeps, Cat 3306 engine, power shift transmission, 36 inch pads, dual hydraulic tilt dozer blade, root rake attachment, draw bar. 12,124 hrs

DRESSER TD-20E, sn:1160035241, equipped w/ A/C Cab, Cummins engine power, power shift transmission, sweeps, 24 inch pads, hydraulic tilt dozer blade, single shank rear hydraulic ripper attachment. 5257 hrs

2002 NEW HOLLAND DC100 LGP, sn:13115051, equipped w/ Rops Canopy, Cummins 4BTA (3.9L) 100HP engine, hydrostatic transmission, rear screen protection, work light package, 26 inch pads, 6 way dozer blade, 2 457 hrs

CRAWLER LOADERS

2007 CAT 953D, sn:CAT0953DCLBP00252, equipped w/ A/C Cab, Cat C6.6 Acert engine, hydrostatic transmission, work light package, 19 inch pads, auxiliary hydraulics. 1.75 vd loader bucket. 2,421 hrs

ARTICULATED DUMP TRUCKS

1997 BELL B25B, sn:BAT2494, equipped w/ A/C Cab, Mercedes Benz ADT (260HP) engine, 6 forward/3 reverse transmission, 6WD, 25 Ton hauling capability, 23.5 R 25 tires, 9,193 hrs

WHEEL LOADERS

2002 JOHN DEERE 744H, sn:583189, equipped w/ A/C Cab, John Deere 6 cyl 12.5L engine, power shift transmission, work light package, general purpose loader bucket with teeth. 26.5 R 25 tires. one owner well maintained machine

2012 JOHN DEERE 544K, ser:1DW544KZCCE644721, equipped w/ A/C Cab, PowerTech E 6068H (6.8L) Tier 4 Emission engine, 4 speed automatic power shift transmission, ride control, multi-language LCD operations monitor, keyless

mission, new sensor, multi-language LED operations monitor, keyless start/sealed-switch module, heated air-ride seat, differential lock, work light package, integral hydraulic quick coupler, forks, 2.75 cu yd loader bucket, Michelin 20.5 R 25 tires.

1.344 hrs

2011 JOHN DEERE 524K, sn:1DW524KZEBD637048, equipped w/ A/C Cab, PowerTech PVX 6068 (6.8L) Tier 4 Emission engine, 4 speed automatic power shift transmission, ride control, multi-language LCD operations monitor, keyless start/sealed-switch module, heated air-ride seat, differential lock, work light package, integral hydraulic quick coupler, forks, 3.00 cu yd loader bucket, 20.5 R 25 tires, 2 624 hrs

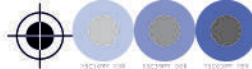
1996 VOLVO L90C, sn:62362, equipped w/ A/C Cab, Volvo 6 cyl 5.5L engine, power shift transmission, work light package, hydraulic quick coupler system, general purpose loader bucket. 16,523 hrs

1997 CASE 621BXT, sn:JEE0053592, equipped w/ Enclosed Cab, Case 6T-590 engine, power shift transmission, work light package, ACS 2.75 yd loader bucket, forks, 20.5-25 tires. 13,398 hrs

2009 CASE 521E, sn:N9F208080, equipped w/ A/C Cab, auto shift transmission, work light package, third valve hydraulics, 1.90 cu yd loader bucket, 17.5-25 tires, 13,578 hrs

CONTINUED

Descriptions at our company website: www.meekinsauction.com



1999 CAT IT38G, sn:7BS00701, equipped w/ Rops Canopy, Cat 3126 engine, automatic power shift transmission, work light package, hydraulic quick coupler system, gp loader bucket, 23.5 R 25 tires
1975 CAT 930, sn:79J3787, equipped w/ Rops Canopy, Cat D333 engine, power shift transmission, 2.25 yd loader bucket, 17.5-25 tires

ASPHALT PAVING AND COMPACTION EQUIPMENT

2005 CAT AP655C MOBIL-TRAC ASPHALT PAVER, sn:CATAP655AAYP00245, equipped w/ Cat 3056E 6 cyl (158HP) engine power, hydrostatic track drive, dual operator stations, work light package, 215 cu ft hopper capacity, rubber tracks, guide steering, slope sonic feeder controls, fume extraction system, hose reel, oscillating front roller, Carlson EZIV-0815 electric heated screed, sn:05840705, 8 ft to 15 ft paving width capability, 8,191 hrs
2005 VOGEL 2116T CRAWLER TRACK ASPHALT PAVER, sn:30689, equipped w/ Cummins QSB5.9 (155HP) engine power, hydrostatic track drive, rubber tracks, throttle control, truck hitch, work light package, 2006 Carlson EZIV-0815 electric heated screed, sn:06630206, 8 ft to 15 ft paving width capability, 6,789 hrs
1998 CAT CS-563C VIBRATORY SMOOTH DRUM ROLLER, sn:4KN01276, equipped w/ Rops Canopy, Cat 3116 engine, hydrostatic transmission, work light package, 84 inch drum, 23.1-26 tires, 4,329 hrs
2008 SAKAI SV505T VIBRATORY PADFOOT ROLLER, sn:VSV16-50559, equipped w/ Rops Canopy, Cummins QSB4.5 (130HP) 4.5L engine, hydrostatic drum drive transmission, 84 inch drum, Goodyear 23.1-26 tires, 2,674 hrs
2007 SAKAI SV505T VIBRATORY PADFOOT ROLLER, sn:VSV16-50435, equipped w/ Rops Canopy, Cummins QSB4.5 (130HP) 4.5L engine, hydrostatic drum drive transmission, 84 inch drum, Goodyear 23.1-26 tires, 4,541 hrs
2008 DYNAPAC CC1000 TANDEM VIBRATORY ROLLER, sn:90132725, equipped w/ Perkins 3 cyl diesel engine, hydrostatic transmission, fold down roll over protection bar, articulating frame, 39 inch drums, water spray system
1999 INGERSOLL-RAND DD-24 TANDEM VIBRATORY ROLLER, sn:160593, equipped w/ Roll Bar, Deutz 3 cyl engine, hydrostatic transmission, 46 inch drums, water spray system, 5,659 hrs
INGERSOLL-RAND 66 INCH DRUM PAD FOOT SHELL KIT ATTACHMENT, fits vibratory single drum compactors, excellent condition
(3) 2014 TRUEMAX TM90 VIBRATORY PLATE COMPACTORS, equipped w/ 6.5HP gas engine, 30CM compaction depth, unused units

LOADER BACKHOES

2007 CAT 416E (4X4), sn:CAT0416EASHA02759, equipped w/ Rops Canopy, Cat 3054C engine, power shuttle transmission, work light package, 1.31 yd 4-n-1 loader bucket, flip over forks attachment, standard stick, Cat 24 inch hoe bucket, 2,539 hrs
1999 CAT 416C, sn:4ZN18673, equipped w/ Rops Canopy, Cat 3054 engine, power shuttle transmission, 2wd, work light package, loader bucket, standard stick, hoe bucket
2006 JOHN DEERE 310SG (4X4), sn:T0310SG949622, equipped w/ Rops Canopy, turbo engine, power shuttle transmission, work light package, loader bucket, standard stick, 18 inch hoe bucket, 2,301 hrs
1991 JOHN DEERE 510D (4X4), sn:T0510DG776874, equipped w/ Rops Canopy, John Deere 4045T engine, 4-speed gear transmission, work light package, 4-n-1 loader bucket, standard stick, 24 inch hoe bucket, 4,351 hrs
TERRAMITE T5C, sn:541156, equipped w/ Roll Bar, Kohler CH20S engine, gp loader bucket, standard stick, hoe bucket, 5,909 hrs

SKID STEER LOADERS

2006 CAT 247B, sn:CAT0247BPMTL02593, equipped w/ Rops Canopy, turbo engine, work light package, rubber tracks, auxiliary hydraulics, loader bucket
1999 BOBCAT 763, sn:509649720, equipped w/ Rops Canopy, Kubota 4 cyl engine, work light package, auxiliary hydraulics, loader bucket, 10-16.5 tires

TELESCOPIC FORKLIFTS

2007 SKYTRAK 10054, sn:160021559, equipped w/ Rops Canopy, Cummins 4.5L turbo engine, 4x4x4, work light package, 10,000LB lifting capability, 54 ft reach height, (2) hydraulic outriggers, hydraulic frame tilt, forks, 14.00-24TG tires, 2,389 hrs
2007 SKYTRAK 10054, sn:160024599, equipped w/ Rops Canopy, Cummins 4.5L turbo engine, 4x4x4, work light package, 10,000LB lifting capability, 54 ft reach height, (2) hydraulic outriggers, hydraulic frame tilt, forks, 14.00-24TG tires, 2,896 hrs
2000 LULL 1044C-54, sn:00AB21P19-962, equipped w/ Rops Canopy, Cummins 3.9L engine, 4x4x4, 10,000LB lift capacity, 54 ft reach height, hydraulic frame tilt, work light package, (2) outriggers, 14.00-24TG tires, forks, 4,217 hrs
1999 LULL 844C-42, sn:99W21P22-2345, equipped w/ Rops Canopy, Cummins 3.9L engine, 4x4x4, 8,000LB lift capacity, 42 ft reach height, hydraulic frame tilt, work light package, 13.00-24TG tires, forks, 1,298 hrs

2005 BOBCAT V723 FL VERSAHANDLER, sn:368111014, equipped w/ Rops Canopy, Perkins 4 cyl engine, 4x4x4, work light package, 7,000LB lift capability, 23 ft reach, hydraulic frame leveling, hydraulic quick-tach system, aux hyd, quick-tach loader bucket, 400/80-24 tires, 3,135 hrs

ROUGH TERRAIN MAST FORKLIFTS

1995 JCB 940, sn:660544, equipped w/ Rops Canopy, Perkins 4 cyl engine, work light package, 8,000LB lift capability, three stage mast, side shift, 15.5-25 front tires, 12.5/80-18 rear tires

UTILITY TRACTORS

2008 JOHN DEERE 5425 (4X4), sn:LV5425R444315, equipped w/ Rops Canopy, John Deere 4.5L 4 cyl (81HP) engine, PowrReverser transmission, forestry rops package with belly pan, light package, three point hitch, pto, draw bar, dual hydraulic remote valves, 12.4 R 24 front tires, 16.9-30 rear tires, also comes with roll bar and rear wheel fenders, 3,091 hrs
FORD 4610, sn:C770111, equipped w/ Rops Canopy, 3 cyl (60HP) diesel engine, 8F/2R dual range transmission, work light package, three point hitch, pto, draw bar, 14.9-28 rear tires, 1,571 hrs
FORD 4610, sn:BB31188, equipped w/ Roll Bar, 3 cyl (60HP) diesel engine, power steering, work light package, three point hitch, pto, draw bar
LONG 445, sn:520528, equipped w/ 3 cyl diesel engine, three point hitch, pto, 12.4-28 rear tires

ARTICULATED TRACTORS

2001 JOHN DEERE 9520 (4WD), sn:RW9520P000117, equipped w/ A/C Cab, John Deere 12.5L 6 cyl (450HP) engine, power shift transmission, work light package, Implement Management system, hitch slip command, articulating frame, front weights package, quad hydraulic remote outlets, 710/70R 42 dual tires, *note: new engine and hour meter installed around 3,500 hrs, meter reading: 1,687 hrs
1999 JOHN DEERE 9400 (4WD), sn:RW9400P0020015, equipped w/ A/C Cab, John Deere 12.5L 6 cyl (425HP) engine, power shift transmission, articulating frame, Super Lift Top Air series, work light package, Implement Management system, hitch slip command, quad hydraulic remote outlets, 710/70R 38 dual tires, 12,153 hrs
1997 JOHN DEERE 9400 (4WD), sn:RW9400P002077, equipped w/ A/C Cab, 12.5L (425HP) engine, power shift transmission, articulating frame, Top Air series, work light package, Implement Management system, hitch slip command, three point hitch, quad hydraulic remote outlets, 710/70R 38 dual tires, 12,022 hrs

PULL SCRAPERS

2006 JOHN DEERE 1812C, sn:T81812C060354, equipped w/ 18 cu yd hauling capability, rear hydraulic remote outlets and tandem hitch, (4) 20.5-25 tires
2006 JOHN DEERE 1812C, sn:T81812C060233, equipped w/ 18 cu yd hauling capability, rear hydraulic remote outlets and push bar, (4) 20.5-25 tires
2003 JOHN DEERE 1812C, sn:T81812C001476, equipped w/ 18 cu yd hauling capability, rear hydraulic remote outlets and tandem hitch, (4) 20.5-25 tires
2003 JOHN DEERE 1812C, sn:T81812C001472, equipped w/ 18 cu yd hauling capability, rear push bar, (4) 20.5-25 tires
1998 MISKIN SPC17, sn:20736, equipped w/ 17 cu yd hauling capability, rear hydraulic remote outlets and tandem hitch, (6) 14.00-24TG tires
1998 MISKIN SPC17, sn:20735, equipped w/ 17 cu yd hauling capability, rear hydraulic remote outlets and tandem hitch, (4) 14.00-24TG tires
1997 MISKIN SPC17, sn:20556, equipped w/ 17 cu yd hauling capability, rear tandem hitch, (6) 14.00-24TG tires
1997 MISKIN SPC17, sn:20555, equipped w/ 17 cu yd hauling capability, rear hydraulic remote outlets and tandem hitch, (6) 14.00-24TG tires

MOTOR SCRAPERS

1990 CAT 615C, sn:5TF00330, equipped w/ Rops Canopy, Cat 3306 (250HP) engine, power shift transmission, self elevating, 16 cu yd hauling capacity, 29.5 R 25 tires, 5,739 hrs
1987 CAT 615, sn:46Z01513, equipped w/ Rops Canopy, front windshield, Cat 3306 engine, power shift transmission, 16 cu yd hauling capacity, self elevating, 29.5 R 25 tires, 4,406 hrs

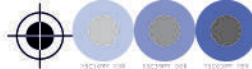
CRAWLER CRANES

BUCYRUS ERIE 22B, equipped w/ 50 ft of boom, cleanout bucket

AERIAL BOOM LIFTS - SCISSOR LIFTS

2006 SNORKEL TB-80DZ (4X4), sn:FB06038, equipped w/ Deutz engine, 80 ft platform reach height capability, platform rotation, 1000LB platform maximum capacity rating, 8 ft basket, 15-22.5 all terrain tires, 2,351 hrs
1997 SNORKEL TB-A80RCU (4X4), sn:97396, equipped w/ Cummins 3.9L (76HP) engine, 80 ft platform reach height capability, 1000LB platform maximum capacity rating, platform rotation, 8 ft basket, 15-22.5 all terrain tires, 6,376 hrs





2006 SNORKEL TB-60DZ (4X4), sn:FB06077, equipped w/ Deutz engine, 60 ft platform reach height capability, platform rotation, 1000LB platform maximum capacity rating, 8 ft basket, 15-19.5 all terrain tires, 1,879 hrs

2006 SNORKEL TB-60DZ (4X4), sn:NV06064, equipped w/ Deutz engine, 60 ft platform reach height capability, platform rotation, 1000LB platform maximum capacity rating, 8 ft basket, 15-19.5 all terrain tires, 2,187 hrs

2006 SNORKEL TB-60DZ (4X4), sn:FB06049, equipped w/ Deutz engine, 60 ft platform reach height capability, platform rotation, 1000LB platform maximum capacity rating, 8 ft basket, 15-19.5 all terrain tires, 3,202 hrs

2000 JLG 600A (4X4) ARTICULATED, sn:0300056761, equipped w/ Deutz engine, 60 ft platform reach height capability, 1000LB maximum platform capacity rating, 6 ft basket, platform rotation, 14-17.5 all terrain tires, 5,374 hrs

2000 JLG 600A (4X4) ARTICULATED, sn:0300050535, equipped w/ Deutz engine, 60 ft platform reach height capability, 1000LB maximum platform capacity rating, 6 ft basket, platform rotation, 14-17.5 all terrain tires

1997 JLG 600S (4X4), sn:0300028457, equipped w/ Deutz engine, 60 ft platform reach height capability, 1000LB platform maximum capacity, 6 ft basket, platform rotation, 15-19.5 all terrain tires, 6,276 hrs

1997 SNORKEL TB-60ARDZ (4X4), sn:970883, equipped w/ Deutz FL1011F air cooled diesel engine, 60 ft platform reach height capability, 1000LB platform maximum capacity rating, platform rotation, 5 ft basket, 15-22.5 all terrain tires

1998 TEREX TB60 (4X4), sn:98630256, equipped w/ 60 ft platform working height reach capability, dual fuel engine, platform rotation, 6 ft basket, 15-19.5 NHS all terrain tires, 1,986 hrs

JLG 25MSOSFD SCISSOR LIFT, sn:0208702963, equipped w/ 25 ft platform reach height capability, Honda GX690 engine power, 1500LB maximum platform weight capacity, extendable platform deck, remote, all terrain tires

GENERATOR SETS - AIR COMPRESSORS

2006 MULTIQUIP DCA-25SSIU WHISPERWATT (25 KW) GENERATOR SET, sn:7107274, equipped w/ Isuzu QD-60 (C240) 4 cyl diesel engine power, 17.2 gallon fuel tank capacity, 240/480 and 240/120 volt receptacles, 60 Hz frequency rating, Knaack 4824 Jobmaster storage chest accessory, trailer mounted, 12,356 hrs

2004 TITAN INDUSTRIAL 8000 WATT GENERATOR SET, sn:128573, equipped w/ 390cc gas engine, 120 Volt and 240 Volt service outlets, circuit protector, mobility kit
WEN 9000E GENERATOR SET, equipped w/ 420cc 4 stroke OHV gas engine, keyless electric start, 9000 watt capacity, 120/240V receptacles, 6.5 gallon fuel tank, mobility kit, unused

WEN 3500E GENERATOR SET, equipped w/ 7.0HP OHV gas engine, 3500 watt capacity, 4 gallon fuel tank, 120/240V receptacles, mobility kit, unused

SULLAIR 185DUQ-JDD AIR COMPRESSOR, sn:004-111539, equipped w/ John Deere 4039 engine, 185 CFM capability, 125 psig rating, skid mounted, 3,927 hrs

CONTRACTOR ACCESSORIES

(4) 2014 MAGNUM 4000 GOLD SERIES HOT WATER PRESSURE WASHERS, equipped w/ 15HP gas engine, electric start, 4000 PSI capability, 12V diesel fired burner, 10 gallon poly fuel tank, hose, gun, wand, soap assembly, totally self contained, mobility kit, unused units

(3) UNUSED BLACK MAX 2700 PSI PRESSURE WASHERS, equipped w/ Honda GCV160 engine, 2.3 gpm, soap system, hose and wand, mobility kit, unused

2007 STONE SB1600 CONCRETE-MUD BUGGY, sn:282006307, equipped w/ Honda GX390 engine, 2500LB load rating, ride-on platform, 16 cu ft capacity

BIG RED 1-TON ENGINE HOIST (UNUSED)

2004 TRANZ SPORTER LH400 ROOFING HOIST LADDERVATOR, sn:012842, equipped w/ 43 ft working height reach capability, Honda GX120 (4.0HP) engine power, aluminum track sections, dual brake system

1995 PAUS 30WH-K ELEVATOR WORKING PLATFORM LIFT, sn:HP4001965, equipped w/ 30 ft working height reach capability, Honda engine, knuckle/telescope/carriage level controls, aluminum basket, trailer mounted, stabilizer legs

EROSION CONTROL EQUIPMENT

2009 FINN T-120 HYDROSEEDER, sn:SBA-3377, equipped w/ 1,200 gallon working capacity tank, Kubota V1505 (33.5HP) 4 cyl diesel engine power, full platform tower, monitor gun, 180 ft discharge direction capability, 14 gallon fuel tank, 500 ft of hose, automatic rewind hose reel, ground level grounds, mounted on tandem axle straight pull trailer, 1,238 hrs

TRENCHING EQUIPMENT

2006 EFFICIENCY MAN HOLE BOX, sn:060013085, equipped w/ 24 inch opening, 8 ft x 8 ft x 8 ft cube, locking pins, complete set up

FORESTRY EQUIPMENT

1999 TIMBERJACK 460C GRAPPLE SKIDDER, sn:10EB1020, equipped w/ forestry rops package, Cummins 6BT engine, hydraulic dozer blade, Esco single arch grapple, 30.5-32 forestry special tires, 10,124 hrs

CONSTRUCTION EQUIPMENT ATTACHMENTS

C & P 48 INCH EXCAVATOR DIGGING BUCKET, sn:414-364791, equipped w/ 2.791 cu yd capacity rating, fits John Deere 450 model machines

C & P 48 INCH EXCAVATOR DIGGING BUCKET, sn:414-222641, equipped w/ 1.805 cu yd capacity rating, fits John Deere 230 model machines

C & P 36 INCH EXCAVATOR DIGGING BUCKET, sn:414-222521, equipped w/ 1.467 cu yd capacity rating, fits John Deere 892D, John Deere 892E, and John Deere 350 model machines

C & P 24 INCH EXCAVATOR DIGGING BUCKET, sn:4140461001, equipped w/ .51 cu yd capacity rating, fits John Deere 120 model machines

PUNGO V-DITCH TRAPEZOID EXCAVATOR DIGGING BUCKET, sn:647, fits 200 size hydraulic excavators

TAG 72 INCH DITCH CLEANING CLEANOUT EXCAVATOR BUCKET, equipped w/ 2 ft depth, fits John Deere 892, John Deere 350 model machines

TAG 48 INCH EXCAVATOR DIGGING BUCKET, sn:42398-08, equipped w/ 2.10 cu yd capacity rating, fits John Deere 350 model machines

SEC GENERAL PURPOSE WHEEL LOADER BUCKET, equipped w/ 125 inch working width capability, unused, fits Cat 966G and Cat 966H Wheel Loaders, unused

SEC QUICK ATTACH WHEEL LOADER PALLET FORKS, unused, 60 inch fork length, fits Cat IT24, Cat IT28, Cat 930G, and Cat 930H wheel loaders, unused

SEC CONCRETE CRUSHER EXCAVATOR ATTACHMENT, fits Komatsu PC300, Deere 270, Hitachi ZX270, and other model hydraulic excavators, unused

SEC 90 INCH DITCH CLEANING EXCAVATOR BUCKET, fits Komatsu PC450 and Komatsu PC400 hydraulic excavators, unused

SEC 90 INCH DITCH CLEANING EXCAVATOR BUCKET, fits Hitachi ZX450, Deere 450, and other model hydraulic excavators, unused

SEC 80 INCH DITCH CLEANING EXCAVATOR BUCKET, fits Cat 345D and Cat 345C hydraulic excavators

SEC 80 INCH DITCH CLEANING EXCAVATOR BUCKET, fits Komatsu PC300, Kobelco SK330, and other model hydraulic excavators, unused

SEC 58 INCH DITCH CLEANING EXCAVATOR BUCKET, fits Cat 307, Hitachi EX120, Hitachi EX100, Kobelco SK120, and other model hydraulic excavators, unused

SEC 68 INCH EXCAVATOR DIGGING BUCKET, unused, fits Hitachi ZX450, Deere 450, and other model hydraulic excavators, unused

SEC 68 INCH EXCAVATOR DIGGING BUCKET, fits Komatsu PC300LC hydraulic excavators, unused

SEC 68 INCH EXCAVATOR DIGGING BUCKET, unused, fits Komatsu PC400 and Komatsu PC450 hydraulic excavators, unused

SEC 65 INCH EXCAVATOR DIGGING BUCKET, fits Komatsu PC200, Kobelco SK330, other model hydraulic excavators, unused

SEC 60 INCH EXCAVATOR DIGGING BUCKET, fits Hitachi ZX200, Deere 690, other model hydraulic excavators, unused

SEC 60 INCH EXCAVATOR DIGGING BUCKET, fits Cat 320CL, Komatsu PC200, other model hydraulic excavators, unused

SEC 24 INCH EXCAVATOR DIGGING BUCKET, unused, fits Cat 320CL, Hitachi ZX200, and other model hydraulic excavators, unused

SEC 48 INCH SKELETON EXCAVATOR DIGGING BUCKET, fits Komatsu PC120 and Kobelco SK100 hydraulic excavators, unused

SEC 83 INCH HYDRAULIC TILTING DITCH CLEANING EXCAVATOR BUCKET, fits Cat 330C and Cat 330B hydraulic excavators, unused

SEC 80 INCH HYDRAULIC TILTING DITCH CLEANING EXCAVATOR BUCKET, fits Cat 325C, Cat 325B, and other model hydraulic excavators, unused

(2) SEC 42 INCH EXCAVATOR CLAM SHELL GRAPPLE BUCKETS, unused, fits Komatsu PC200LC, Cat 320, and other model hydraulic excavators, unused

SEC EXCAVATOR LONG EXTENSION STICK ATTACHMENT, equipped w/ 45 inch bucket, 26 ft reach capability, fits Hitachi ZX450, Deere 450, and other model hydraulic excavators, unused

SEC EXCAVATOR LONG EXTENSION STICK ATTACHMENT, equipped w/ 46 inch bucket, able to reach 56 ft, fits Hitachi ZX330, Deere 330, Hitachi EX300LC-2 to Hitachi EX300LC-5 and other model hydraulic excavators, unused

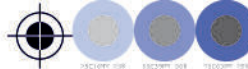
SEC EXCAVATOR LONG EXTENSION STICK ATTACHMENT, equipped w/ 42 inch bucket, fits Kobelco SK330, Komatsu PC300, and other model hydraulic excavators, unused

SEC EXCAVATOR LONG EXTENSION STICK ATTACHMENT, unused, fits Hitachi ZX350, Deere 330, and other model hydraulic excavators, unused

SEC EXCAVATOR LONG EXTENSION STICK ATTACHMENT, equipped w/ 42 inch bucket, able to reach 48 ft, fits Komatsu PC200LC-5 to Komatsu PC200LC-8 Hydraulic Excavators, unused

CONTINUED

Descriptions at our company website: www.meekinsauction.com



8.5 Last Modification: D:2014071514553-04'00" Creator: QuarXp-
24000 dpi Screen Data File POS, Right-Handed Color-Seq. Std-OPN Stimulus Spot Colors) (TRAP ABO:100 Scaling Percent
WD 100 Unit:\u00C1750815 X:1750815 Y:1750815 Z:1750815 bleed: 0.125
D:20140711154020-05'00"

SEC EXCAVATOR LONG EXTENSION STICK ATTACHMENT, equipped w/ 42 inch bucket, 56 ft reach capability, fits 60,000LB Hydraulic Excavators, unused
SEC EXCAVATOR LONG EXTENSION STICK ATTACHMENT, equipped w/ 45 inch bucket, 56 ft reach capability, fits 60,000LB Hydraulic Excavators, unused
2013 INDUSTRIALS AMERICA HD12 BOX BLADE, equipped w/ 12 ft working width, unused, 14L-16.1 Treadura tires, pull type
BALDERSON ROOT RAKE ATTACHMENT, 13 ft working width capability, pin-on, fits crawler tractors
LARGE QUANTITY OF NEW UNUSED SKID STEER LOADER ATTACHMENTS (Loader Buckets, Grapples, Rock Buckets, Stump Buckets, Pallet Forks, Mount Plates, Sweeper Brooms, Material Booms, Bale Spears, Hydraulic Shear, Snow and Mulch Loader Buckets, etc.)

AGRICULTURAL EQUIPMENT

2003 JOHN DEERE 9650STS (4WD) COMBINE, sn:H09650S696686, equipped w/ A/C Cab, 6 cyl (290HP) turbo engine, hydrostatic transmission, work light package, 250 bushel grain tank capability, 18.4 R 42 front dual tires, 18.4 R 26 rear tires, 3,383 engine hrs, 2,209 separator hrs

1998 CASE INTERNATIONAL 2188 AXIAL-FLOW COMBINE, sn:JJC0193859, equipped w/ A/C Cab, 6 cyl (260HP) engine, hydrostatic drive, work light package, AFS track system monitor, 210 grain tank capacity bu., 30.5L-32 front tires, 14.9-24 rear tires, 4,726 hrs

1992 CASE INTERNATIONAL 1660 AXIAL-FLOW COMBINE, sn:JJC0103281, equipped w/ A/C Cab, Cummins 6 cyl (190HP) engine, hydrostatic transmission, work light package, 180 bushel grain tank capability, 24.5-32 front tires, 14.9-24 rear tires, 4,166 hrs

CASE INTERNATIONAL 1064 (6-ROW) CORN HEAD

CASE INTERNATIONAL 1020 (20 FT) GRAIN HEAD PLATFORM

2001 JOHN DEERE 930 FLEX GRAIN HEAD PLATFORM

1996 JOHN DEERE 925 FLEX GRAIN HEAD PLATFORM

(2) JOHN DEERE 643 (6-ROW) CORN HEADS

JOHN DEERE 444 (4-ROW) CORN HEAD

JOHN DEERE 220 GRAIN HEAD PLATFORM

NEW HOLLAND 974 (8-ROW) CORN HEAD

ALLIS-CHALMERS 6-ROW CORN HEAD

(4) NEW IDEA 324 (2-ROW) CORN PICKERS

UNVERFERHT HT30 HEADER TRANSPORT TRAILER (UNUSED), equipped w/ adjustable rest brackets, will transport 30 ft or less grain platforms and 12 Row corn header platforms, oscillating rear axle

2014 LAND PRIDE APS1572 ALL PURPOSE SOLID STAND SEEDER, sn:627721, equipped w/ 73 inch seeding width capability, (2) 8 inch diameter spiked rollers, (10) seed cups, heavy duty seed box lid with seed splash guard, 72 inch width (8 inch diameter) rear roller, quick hitch system, excellent condition

2014 CF POWER LINE TM180-6 ROTARY TILLER, equipped w/ 6 ft working width capability, slip clutch, unused, fits three point hitch tractors

2014 CF POWER LINE TM150-5 ROTARY TILLER, equipped w/ 5 ft working width capability, slip clutch, unused, fits three point hitch tractors

2014 CF POWER LINE TM120-4 ROTARY TILLER, equipped w/ 4 ft working width capability, slip clutch, unused, fits three point hitch tractors

INTERNATIONAL HARVESTER 375 DISC HARROW, sn:0470000U023121, equipped w/ 28 disc blades, 13 ft 6 in working width, pull type attachment

2007 VERMEER 505M CLASSIC SERIES ROUND HAY BALER

NEW HOLLAND 273 SQUARE HAY BALER

JOHN DEERE 8300 GRAIN DRILL

INTERNATIONAL HARVESTER 510 GRAIN DRILL

KINZE 840 GRAIN CART

(2) J & M 350-20 GRAVITY WAGONS

FARMERS AMERICA GRAVITY WAGON

DMI BIG-LITTLE SERIES GRAVITY WAGON

(2) AVCO GRAVITY WAGONS

BRILLION GH6 SOIL PULVERIZER 3PT ATTACHMENT

(2) 2014 CF POWER LINE 5 FT 3PT BOX BLADES

(2) 2014 CF POWER LINE 3PT 6 FT BOX BLADES

(2) 2014 TOP LINE 3PT HAY SPEAR ATTACHMENTS

2014 TOP LINE 3PT FIELD CULTIVATOR ATTACHMENT

(3) 2014 HOLLOW 500 SERIES 3PT FERTILIZER SEED SPREADERS

2014 BIG BEE AGRI-7 FT ROTARY CUTTER

2014 BIG BEE L-660 (6 FT) ROTARY CUTTER

(4) 2014 CF POWER LINE 6 FT ROTARY CUTTERS

(4) 2014 CF POWER LINE 5 FT ROTARY CUTTERS

(2) 2014 CF POWER LINE 4 FT ROTARY CUTTERS

2014 BIG BEE FM84 (84 INCH DECK) FINISH MOWER

LANDSCAPING • LAWN MAINTENANCE EQUIPMENT

2014 BIGDOG DIABLO SERIES ZERO TURN RADIUS LAWN MOWER, equipped w/ Roll Bar, Kawasaki FX691V (22.0HP) engine, hydrostatic transmission, 54 inch deck, unused

2013 BIGDOG ALPHA MP SERIES ZERO TURN RADIUS LAWN MOWER, equipped w/ Kawasaki FR691V (23.0HP) engine, hydrostatic transmission, LED lights, 54 inch deck, unused

(4) 2014 BIGDOG ALPHA SERIES ZERO TURN RADIUS LAWN MOWERS, equipped w/ Kawasaki FR691V (23.0HP) engine, hydrostatic transmission, LED lights, 52 inch deck, unused

(2) 2014 DIXON D20KH42 LAWN TRACTORS, equipped w/ Kohler Courage 597cc (20.0HP) engine, hydrostatic transmission, cruise control, cup holder, reverse operation system, headlights, front-end protection bar, hitch, 42 inch cutting deck, unused

2013 GREAT DANE SUPER SURFER STAND-ON LAWN MOWER, equipped w/ Kawasaki FH580V (19.0HP) engine, hydrostatic wheel drive, zero turn radius, ride-on platform, floating 34 inch cutting deck, low meter hours (10.3 meter hrs)

2013 RAVEN MPV-7100 MULTI PURPOSE HYBRID LAWN MOWER, equipped w/ 420cc gas engine, ground and deck drive motors, cruise control, LED lights, 6500 watt AC Generator, 20 AMP/30 AMP/12 Volt DC receptacles, cargo bed, battery charger, electric direct drive mower drive system, 46 inch cutting deck, unused

(2) 2014 LITTLE WONDER HIGH PERFORMANCE DEBRIS VACUUMS, equipped w/ Briggs & Stratton 825 Series (8.25HP) engine, top loading debris bag design, 8 bushel/74.47 gallon bag capacity, pneumatic drive wheels, unused

DAY CAB TRUCK TRACTORS – TRI AXLE

1997 VOLVO ACL, sn:4V4SDBCH5VR517148, equipped w/ Cat 3406 (435HP) engine, Fuller RTX-16710C transmission, cruise, engine brake, suspension dump, differential lock, 12,000LB front axle, 40,000LB rear axles, air lift third axle, up-to-date inspection. 393,725 miles

SLEEPER CAB TRUCK TRACTORS – TANDEM AXLE

2002 INTERNATIONAL 9200i EAGLE, sn:2HSCEAMR62C022505, equipped w/ Detroit Series 60 (12.7L) 470HP engine, Eaton Fuller 10 speed transmission, cruise, 3 stage engine brake, power divider lock, fifth wheel slide, suspension dump, 205 wheel base, Pro Sleeper Cab series, 12,000LB front axle, 40,000LB rear axles, air ride suspension

1990 VOLVO WIA, sn:4V1WDBFL8LN632229, equipped w/ Volvo VE12 (325HP) engine, 12 speed transmission, cruise, interaxle lock, exhaust break, Integral sleeper cab, 12,000LB front axle, 38,000LB rear axles, spring suspension, hydraulic wet line kit. 489,390 miles

HYDRAULIC CRANE TRUCKS

1996 PETERBILT 357 - SIMON 23.5 TON, sn:1XPAL0EX7TN415750, equipped w/ Cat 3176 (380HP) engine, Eaton Fuller 8LL transmission, cruise, 3 stage engine brake, axle differential lock, dump valve, locking differential lock, 20,000LB front axle, 42,400LB rear axles, Simon-Ro TC-4792 Crane Boom, sn:4900996378, 23.5 Ton lifting capability, 136 ft boom, Jib, (4) hydraulic outriggers, 20 ft flatbed body, air ride suspension, double frame body, tow package, 278,867 miles

1999 INTERNATIONAL 2674 - TEREX 23.5 TON, sn:1HTGLADT6XH699469, equipped w/ DT530E (300HP) engine, Spicer 10 speed transmission, cruise, power divider lock, 250 wheel base, 20,000LB front axle, 44,000LB rear axles, Terex TC-4792 Crane Boom, sn:4900699845, 24 Ton lifting capability, 136 ft boom, Jib, 18 ft flatbed body, (4) hydraulic outriggers, Johnson hook and block, Hendrickson heavy duty spring suspension, 191,690 miles

1990 FORD L7000 - MANITEX 14 TON, sn:1FDPR72P5LVA35093, equipped w/ Ford 185HP diesel engine, 6 speed transmission, 222 wheel base, gvw rating: 33,000LBS, Manitex 1461 Crane Boom, sn:14624, 14 Ton lifting capability, 101 ft boom, 16 ft flatbed body, (4) hydraulic outriggers, hook and block, spring suspension, 180,602 miles

1981 FORD F800 - NATIONAL 4T55 SERIES 4, sn:1FDPK84N7BVJ29252, equipped w/ Detroit Diesel 8.2L engine, 5 x 2 manual transmission, 9,000LB front axle, 18,500LB rear axle, 16 ft flatbed body, National Crane 4T55 Series 4 hydraulic crane, sn:14365, 8 Ton lifting capability, 60 ft boom, four outriggers, hook and block

MECHANICS – SERVICE TRUCKS

1999 FORD F-350XL SUPERDUTY DUALY MECHANICS TRUCK, sn:1FDWF36F2XEE29610, equipped w/ 7.3L Powerstroke diesel engine, 5 speed transmission, work light package, 8 ft service tool body, IMT service crane, air compressor, hose reels, tow package

2004 INTERNATIONAL 4300 SERVICE TRUCK, sn:1HTMMAAN04H679963, equipped w/ DT466 engine, 6 speed transmission, locking rear, Adkins 14 ft service tool body, tow package, air brakes, 11R 22.5 tires, 72,790 miles

2010 CHEVROLET SILVERADO 2500HD SERVICE TRUCK, sn:1GB3CVBK5AF129709, equipped w/ Vortec 6.0L engine, automatic transmission, cruise, Southern Coach edition. Reading 8 ft service tool body. utility rack. tow package. 107,884 miles



ASPHALT TANKER TRAILERS

1990 ETNYRE LWR-RT, sn:1E9T3520XLE007267, equipped w/ 5,000 gallon tank capacity, Wisconsin air cooled pony engine, tandem axle, spring suspension, 10.00 R 20 tires

GRAIN HOPPER TRAILERS

2006 MERRITT MVT BOTTOM HOPPER TRAILER, sn:1MT2P42226H019239, equipped w/ 96 inch x 42 ft aluminum body, gvw rating: 65,000LBS, 2 hoppers, Shur-Lok tarp system, tandem axle, Hendrickson air ride suspension, Hayes Lemmerz hubs, 11R 24.5 tires

ATVs • UTILITY CARTS • GOLF CARTS

2009 CLUB CAR XRT1550G (4X4), sn:RT1009-080618, equipped w/ Rops Canopy, 2 cyl gas engine, IntelliTrak series, brush guard, light package, 4 ft cargo dump body, AT25 x 11-12 tires, 1,401 hrs

2006 POLARIS RANGER, sn:4XARB50A36D738908, equipped w/ Roll Bar, gas engine, 2 x 4, brush guard, differential lock, light package, manual dump cargo body, tow hitch, AT25 x 11-12 tires, 1,459 hrs

(10) 2010 CLUB CAR PRECEDENT GOLF CARTS, equipped w/ Canopy, windshield, electric powered, 48 volt system, aluminum frame, two passenger, battery charger

COLLECTOR CARS • RECREATIONAL VEHICLES

1953 PACKARD CLIPPER 4-DOOR SEDAN CLASSIC AUTOMOBILE, sn:266211405, equipped w/ V8 gas engine, automatic transmission, odometer reading: 73,013 miles, *note: no title available with automobile, sold with bill of sale only

1988 MASTER CRAFT PRO STAR 190 SKI BOAT, sn:MBCPAJB3A888, equipped w/ 19 ft fiberglass body, 351 inboard engine, Monster wakeboard tower accessory, comes with 1988 Master Craft 19M single axle boat trailer, *note: no title available with trailer, sold with bill of sale only

OTHER ITEMS TO INCLUDE

Lowboy Trailers, Equipment Trailers, Utility Trailers, Large Quantity of New Unused Skid Steer Loader Attachments, Large selection of Hydraulic Excavator Attachments, Agricultural Equipment Attachments, Welding Equipment, Shop Equipment, Light Duty Generator Sets, Water Pumps, Contractor Grade Hand Tools and Accessories, Truck and Automobile Accessories, Equipment Parts and Accessories, Lawn Maintenance and Landscaping Equipment, miscellaneous items, visit our company website meekinsauction.com for complete listing with descriptions and pictures

INVENTORY UPDATED DAILY



2006 MERRITT MVT GRAIN BOTTOM HOPPER



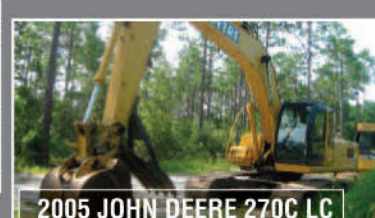
ETNYRE LWR-RT 5,000 GALLON ASPHALT TANKER



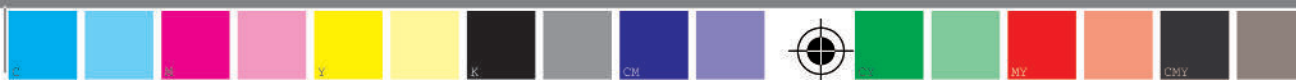
KAWASAKI - CLUB CAR UTILITY CARTS



2011 CHEVROLET 2500HD SILVERADO LT Z71



9





1 OF 14 - 40 FT CONEX STORAGE CONTAINERS



1997 CASE 621BXT



1998 CAT CS-563C



2005 BOBCAT V723 FL
VERSAHANDLER



1990 VOLVO WIA INTEGRAL
SLEEPER CAB



1999 BOBCAT 763



2008 SAKAI SV505T



2005 VÖGELE 2116T
RUBBER TRACK



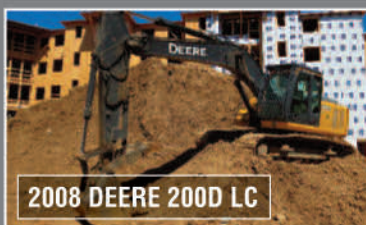
2008 DYNAPAC CC1000



2014 LAND PRIDE APS1572
SEEDER



2005 CAT AP-655C
RUBBER TRACK



2008 DEERE 200D LC



2014 MAGNUM 4000 GOLD SE-
RIES PRESSURE WASHERS



INDUSTRIAS AMERICA HD12
UNUSED BOX BLADE



INGERSOLL-RAND 66 INCH
PADFOOT SHELL KIT

8.5 Last Modification: D:\20140711\154606-04\00' Producer: QuarkPress(R) 8.5 Creation Date: D:\20140711\154606-05\00' WD 100 \vsi\luc\ C:\175615 M:\175615 Y:\175615 X:\175615 [TRAP ABO:100 Scaling Percent 100]

\\uspress-rip\01-Jobs\110969 Meekins Auction\EPS-PDF for Rampage\110969 Brochure.pdf Page 11 Title: Layout 1 Creator: QuarkX 2400.0 dpi (Screened Data File POS, Right-Reading, Color-Seqs, Std-CMYK Simulated Spot Colors) [TRAP ABO:100 Scaling Percent 100]

PS Version: 3015.102 HQN Version 9.0 Revision 2 RSL, Ripped on Friday, July 11, 2014 3:47:52 PM ID: Kellei



2009 FINN T-120 HYDROSEEDER



2011 DEERE 524K
LOADER - TOOL CARRIER



2007 VERMEER 505M
CLASSIC SERIES



2005 MITSUBISHI FUSO FE120



2012 DEERE 210G LC



1 OF 2 - 2010 CHEVROLET
2500HD SERVICE TRUCKS



2004 INTERNATIONAL 4300
SERVICE



2002 INTERNATIONAL 9200i
EAGLE



1 OF 4 - JOHN DEERE 1812C
PULL SCRAPERS



2001 JOHN DEERE 930 FLEX



2 OF 8 - FORD F-250XL
SUPERDUTY PICKUPS



1 OF 2 - 2009 CHEVROLET SILVER-
ADO 1500 LT Z71 4X4 PICKUPS



2 OF 4 - 2014 BIGDOG ALPHA
SERIES ZERO TURNS

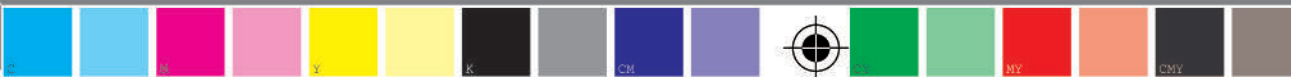


1 OF 2 - DEERE 9400 4WD ARTIC
TRACTORS



2 OF 6 - FORD F-350XL
SUPERDUTY CREW CABS

Descriptions at our company website: www.meekinsauction.com





1996 PETERBILT 357 - SIMON
TELECT 23.5 TON CRANE



1999 INTERNATIONAL 2674 -
TEREX 23.5 TON CRANE



1990 FORD L7000 - MANITEX 14
TON CRANE



2007-2005 FORD F-150XL
EXTENDED CABS



2013 BIGDOG ALPHA MP
SERIES ZERO TURN



2014 BIGDOG DIABLO SERIES
ZERO TURN



2014 DIXON D20KH42 LAWN
TRACTORS



2007 SAKAI SV505T



2001 DEERE 9520 - 2006 DEERE 1812C SCRAPERS



2005 JOHN DEERE 9650STS 4WD



2013 GREAT DANE SUPER SURFER LAWN MOWER



2013 RAVEN MPV7100 HYBRID LAWN MOWER



2014 LITTLE WONDER HPV SERIES DEBRIS VACUUMS



2014 PJ 8312 UTILITY TRAILERS



2006 DEERE 310SG (4X4)



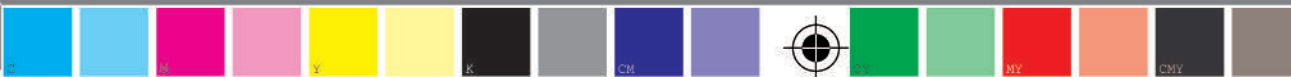
2008 JOHN DEERE 5425 4WD

Descriptions at our company website: www.meekinsauction.com

8.5 Last Modification: D:\20140711\154610-04\00' Producer: QuarkXPress(R) 8.5 Creation Date: D:\20140711\154610-05\00' WD 100 \xsi\luc\ C:\175615 M:\175675 Y:\17580 X:\175645] bleed: 0.125 margin size: 0.375



\\uspress-rip\01_Jobs\110969 Meekins Auction\PS-Prep for Rampage\110969 Brochure.pdf Page 13 Title: Layout 1 Creator: QuarkX 2400.0 dpi (Screened Data File POS, Right-Reading, Color-Setup, Std-CMY Simulated Spot Colors) [TRAP ABO:100 Scaling Percent PS Version: 3015.102 HQN Version 9.0 Revision 2 RSL, Ripped on Friday, July 11, 2014 3:48:20 PM ID: Kellei







2010 JOHN DEERE 60D



DRESSER TD-20E



1 OF 2 - 2014 PJ T6202 TILT DECKS



2002 NEW HOLLAND DC100 LGP



KOMATSU PC200LC-6L



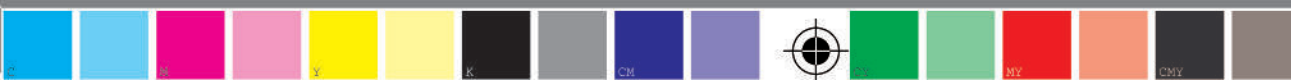
1 OF 3 - 2006 SNORKEL TB60Z 4X4 BOOM LIFTS



2009 CASE 521E

8.5 Last Modification: D:\20140711\154615-04\00' Producer: QuarkPress(R) 8.5 Creation Date: D:\20140711\154020-05\00' WD 100 \rsi\luc\ C:\75615 M:\75675 Y:\7580 X:\75645] bleed: 0.125 margin size: 0.375

\\uspress-rip\01_Jobs\10969 Meekins Auction\2014-07-11\154615-04\00' Layout 1 Creator: QuarkX 2400.0 dpi (Screened Data File POS, Right-Reading, Color-Setup, Std-CMYK Simulated Spot Colors) [TRAP ABO:100 Scaling Percent PS Version: 3015.102 HCN Version 9.0 Revision 2 RSL, Ripped on Friday, July 11, 2014 3:48:46 PM ID: Kelleiv





8.5 Last Modification: D:20140711154617-04'00' Producer: QuarkXPress(R) 8.5 Creation Date: D:20140711154020-05'00' WD 100 \rsi\luc\ C:175815 M:175875 Y:17580 X:175845] bleed: 0.125 margin size: 0.375

8.5 Last Modification: D:20140711154617-04'00' Producer: QuarkXPress(R) 8.5 Creation Date: D:20140711154020-05'00' WD 100 \rsi\luc\ C:175815 M:175875 Y:17580 X:175845] bleed: 0.125 margin size: 0.375



2012 DEERE 544K



2012 DEERE 85D

For up-to-date auction inventory, with pictures and descriptions, visit our company website

www.mEEKINSauction.com



2009 FINN T120 HYDROSEEDER



1996 PETERBILT 357 - SIMON TELECT 23.5 TON CRANE

AUCTION

the Summer
Contractor's Auction of
FRIDAY, August 1, 2014
8:00 AM
LUMBERTON, NC

2011 DEERE 200D LC

LLOYD MEEKINS & SONS AUCTION CO.
4070 NC HWY. 211 E
LUMBERTON, NC 28358
www.mEEKINSauction.com



FIRST-CLASS MAIL
PSNRT
U.S. Postage
PAID
U.S. Press
31601

RETURN SERVICE REQUESTED

Time sensitive
material, please
deliver promptly

