



**Lloyd
Meekins
& Sons
Auction Co.**

20th ANNUAL DECEMBER CONTRACTOR'S

AUCTION

TUESDAY, DECEMBER 30th, 2014 at 8:00 a.m.

LUMBERTON, NC



2008 CAT 928HZ

MAJOR YEAREND PUBLIC AUCTION CONSISTING OF
EARTH MOVING EQUIPMENT, PAVING AND COMPACTION EQUIPMENT, HEAVY DUTY TRUCKS AND TRAILERS, SUPPORT EQUIPMENT,
AGRICULTURAL EQUIPMENT, ATTACHMENTS, PICKUPS, SPORT UTILITY VEHICLES, AUTOMOBILES, AND OTHER ITEMS. MAJOR AB-
SOLUTE PACKAGES OF HEAVY CONSTRUCTION EQUIPMENT AND TRUCKS WILL BE AVAILABLE ON THIS AUCTION.



2006 TEREX TA40 GENERATION 7

SALE SITE LOCATION:

4070 NC HWY 211 EAST, LUMBERTON, NC 28358



Auction Conducted By:

Lloyd Meekins & Sons Auction Company

4070 NC Hwy 211 East - Lumberton, NC 28358

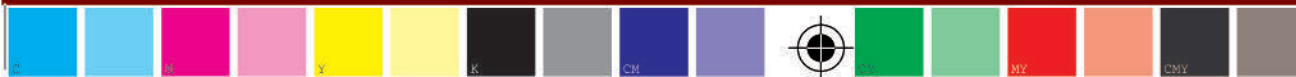
Office Phone: 910.739.0547 • Office Fax: 910.738.1389

Email: info@meekinsauction.com • NC Firm License #858



Modification: D:\2014\12\16081520-05-00' Product: QuarXPress(R) 8.5 Creation Date: D:\2014\12\16081520-05-00'
WD 100 \sivaluc\ C:\175815 X:\175875 Y:\17580 X:\175845] bleed: 0.125 margin size: 0.375

\\uspress-rip\01_Jobs\12046 Meekins\BPS-PDF for Rampage\12046 Brochure.pdf Page 1 Title: Layout 1 Creator: QuarXPress(R) 8.5 Creation Date: D:\2014\12\16081520-05-00'
2400.0 dpi (Screened Data File POS, Right-Reading, Color-Seqs, Std-CMF Simulated Spot Colors) [TRAP ABO:100 Scaling Percent
Cyan Magenta Yellow Black
PS Version: 3015.102 HQN Version 9.0 Revision 2 RSL, Ripped on Tuesday, December 16, 2014 8:29:08 AM
ID: Kelleve:





2004 VOLVO EC330BLC

Featuring absolute packages of equipment from **AIC METAL RECYCLING LLC, BAZEN COMPANY INC & FARMS, B.E. SINGLETON & SONS INC, C & S CABLE CONSTRUCTION INC, CITY OF LUMBERTON, EASY-KLEEN PRESSURE SYSTEMS, ES & J ENTERPRISES INC, ESTATE OF CARLOS E. STEFFEY (DECEASED), MID-EAST SERVICES INC, PC CONSTRUCTION COMPANY, ROBESON COUNTY, SEC ENTERPRISES, SOUTHEASTERN EQUIPMENT CORPORATION, ST WOOTEN CORPORATION, INC, TAL INTERNATIONAL, TOMAHAWK ATTACHMENTS, TOWN OF GRIFTON, WHITEHEAD SAND COMPANY INC,** and other owners

AUCTION TERMS

- Every Item is sold as-is, where is.
- No Guarantees or warranties, expressed or implied. This brochure is only a guide. PLEASE INSPECT EQUIPMENT BEFORE BIDDING!
- **NOTE: If interested in one item, please contact to insure availability.**
- **ADMINISTRATION FEE:** All purchased lots will be subject to an administrative fee of ten percent. **Online Bidders** will be charged an administrative fee of twelve percent on all online purchases.
- **PAYMENT TERMS:** All payments are made in US funds. Methods of payment are cash, wire transfer, certified/ cashiers check, or company/ personal check accompanied with bank letter guaranteeing payment to Lloyd Meekins & Sons Auction Company. Equipment will not be released from sale site until purchases have been paid in full.
- **SALES TAX EXEMPTION:** Buyers qualifying for sales tax exemption must present a copy of their sales tax I.D. numbers and complete a NC certificate of exemption (E595-e), or have a current exemption form on file, in order to be exempted from sales tax on applicable purchases.
- **SALES TAX:** The North Carolina Sales Tax (Robeson County) is 7.00% and applies to all sales, unless proper tax exemption forms are completed.
- **EXPORT EXEMPTIONS:** Buyers purchasing for export must complete and execute a NC affidavit of export (E599-C) for sales tax exemption. Items will not be released until this required document is received.
- **FOR THEIR SAFETY- NO CHILDREN ARE ALLOWED ON SALE SITE!**
- **VEHICLE TITLE INFO:** All title- item purchases will be charged a \$30 title-processing fee. All titles will be mailed out within 15 business days after payment has been received.
- **SALES REPRESENTATIVES AND SALE SITE MANAGERS:**
Trey Meekins, 910.258.4383, trey@meekinsauction.com
EB Webb, 252.245.1405, ebwebb@meekinsauction.com
Rona West, Office Manager, 910.739.0547, rona@meekinsauction.com
Avery Brewer, Sale Site Manager, 910.608.9457
- **AUCTIONEERS:** Lloyd "Mickey" Meekins, Jr. #228, Lloyd "Trey" Meekins, III #8137

INSPECTION/REGISTRATION/ EQUIPMENT REMOVAL DATES

- **EQUIPMENT INSPECTION DATE:** Monday, December 29th, 2014 from 8:00 am until 6:00 pm
- **BIDDER REGISTRATION** Begins Monday, December 22nd
- **REMOVAL OF EQUIPMENT DEADLINE:** All equipment must be removed from sale site by Thursday, January 23rd, 2015. Loading docks are available. Equipment not removed by designated date, buyer may be charged storage fees. Removal of equipment and insurance is the buyers' responsibility.
- **OFFICE AND YARD OPERATING HOURS:** Open Monday thru Friday 8:00 am until 5:00pm. Closed weekends.
- **NOTE:** The office and yard will be closed Wednesday, December 24th-Thursdays, December 25th and Wednesday, December 31st-Thursdays, January 1st due to the holiday season and New Year.

DIRECTIONS TO SALE SITE

- From Interstate I-95, take EXIT 20, Follow out ROBERTS AVE/ NC-211 SOUTH for 3.1 miles; Turn LEFT onto EAST 5TH Street/NC-211 EAST, continue to follow for 1.1 miles; The sale site will be on right side of the road.

(Sale site is located 90 miles south of Raleigh, NC; 130 miles southeast of Charlotte, NC; 150 miles northeast of Columbia, SC; 325 miles northeast of Atlanta, GA; 650 miles north of Orlando, Florida.)

GPS Sale Site Location: 4070 East 5th Street, Lumberton, NC

ACCOMMODATIONS

- Holiday Inn (Auction Headquarters) 910.671.1166
- Hampton Inn 910.738.3332 • Fairfield Inn 910.739.8444
- Best Western 910.618.9799 • Comfort Suites 910.345.0260

AIRLINES/TRAVEL AGENCY

- Fayetteville Regional Airport (located 30 miles from auction site) www.airnav.com
- Raleigh/Durham International Airport (RDU) (located 90 miles from auction site) www.rdu.com
- Lumberton Municipal Airport (LBT) www.airnav.com/airport/LBT
- ITS Travel Agency: Ann Calhoun 843.669.8549

CONSIGNMENT INFORMATION

Interested in selling your equipment or trucks for this major auction, then choose Meekins Auction Company to turn your valuable assets into cash returns. Selling Benefits to help your company achieve the best return on the sale of your assets.

If you or your company are interested in selling your surplus equipment and trucks for this major auction, please contact us today!

Contact one of our Auction Sales Representatives.

- Mickey Meekins – 910.258.1705
- Trey Meekins – Mobile: 910.258.4383 or email: trey@meekinsauction.com
- E.B. Webb – Mobile: 252.245.1405 or email: ebwebb@meekinsauction.com

Consignments will be accepted until Tuesday, December 23rd, 2014 at 12 noon

LOOKING TO LIQUIDATE YOUR SURPLUS EQUIPMENT AND TRUCKS FOR THIS MAJOR AUCTION!

- **Flexible Contract Options** (Net Guarantee, Straight Commission, Out-Right Purchase, Off Site Auctions)

NOTE: For auction schedule approximate selling times, please visit our company website at meekinsauction.com



Online Bidding Registration: register at equipmentfacts.com or call 908.788.2025

(Note: Online Registration must be completed before the date of the auction.)



1999 IHI 35J SERIES



1999 KOBELCO SK135SRLC



2006 KOMATSU PC158USLC



2007 VOLVO ECR58



2004 KUBOTA KX121-3



2006 YANMAR V1035-3



2005 CAT 307C



2013 KOBELCO SK140SRLC-3



Descriptions at our company website: www.meekinsauction.com

Modification: D:\2014\12\16081120-05-00'
WD 100 \sivaluc\ C:\75615 X:\75615 Y:\75615
QuarkXPress(R) 8.5 Creation Date: D:\2014\12\16081120-05-00'
[TRAP ABO:100 Scaling Percent
2400.0 dpi (Screened Data File POS, Right-Reading, Color-Seps, Std-CMY Simulated Spot Colors)
PS Version: 3015.102 HQN Version 9.0 Revision 2 RSL, Ripped on Tuesday, December 16, 2014 8:28:22 AM
ID: Kelleve

\\uspress-rip\01_Jobs\112046 Meekins\EPS-PDF for Rampage\112046 Brochure.pdf Page 3 Title: Layout 1 Creator: QuarkXPress(R)
2400.0 dpi (Screened Data File POS, Right-Reading, Color-Seps, Std-CMY Simulated Spot Colors)
PS Version: 3015.102 HQN Version 9.0 Revision 2 RSL, Ripped on Tuesday, December 16, 2014 8:28:22 AM
ID: Kelleve



CONSTRUCTION EQUIPMENT

A Partial List to Date Includes the Following.

HYDRAULIC EXCAVATORS

2004 VOLVO EC330BLC, 2002 VOLVO EC330BLC, 2007 VOLVO ECR58, 2004 CAT 320CL, 2000 CAT 315BL, CAT E110B, 1997 KOMATSU PC200LC-6LC, 2006 KOMATSU PC158USLC, 1996 LINK BELT 3400, 1999 HYUNDAI ROBEX 210LC-3, 2006 YANMAR V1035-3, 1994 DAEWOO DH280, 1996 DAEWOO DH170, 210LC, SAM-SUNG SE2001 NEW HOLLAND EW160 MOBILE, 2013 KOBELCO SK140SRCL-3 ACERA, 1999 KOBELCO SK135SRCL, 2004 KUBOTA KX121-3, 1999 IHI 35J

CRAWLER DOZERS

CAT D8H w/ Cat single shank rear ripper, 2004 CAT D7R SERIES II w/ Cat Multi-Shank rear ripper, 1977 CAT D7G, 2005 CAT D6N LGP, 2004 CAT D6N LGP, 1997 CAT D6M LGP, 1970 CAT D6C, 2000 CAT D5M LGP, 2006 CAT D5G LGP, (2) 2008 JOHN DEERE 1050J, 1988 JOHN DEERE 750B, JOHN DEERE 350B WT, CASE 1450, 2006 KOMATSU D41P-6, 1995 KOMATSU D37P-5A, DRESSER TD-15E, DRESSER TD-7C, 1943 CLARK C-4837

CRAWLER LOADERS

CAT 941B

ARTICULATED DUMP TRUCKS

2006 TEREX TA40 GENERATION 7, 1999 VOLVO A25C

MOTOR GRADERS

JOHN DEERE 770B, (2) JOHN DEERE 570A, CAT 12, 1975 CAT 120G

MOTOR SCRAPERS

1985 CAT 613C, CAT 613B, 1985 DRESSER 412B, WABCO MODEL C TOURNAPULL

WHEEL LOADERS

2008 CAT 928HZ, 1985 CAT 926, 1995 JOHN DEERE 544G, DRESSER H90E SERIES, DRESSER H65C PAYLOADER SERIES, 2004 VOLVO L120E

LOADER BACKHOES

1995 CAT 446B, 2002 CAT 430D 4X4, 2005 CAT 420D 4X4, 1998 CAT 416C, 1993 CAT 416B, 1995 CASE 580 SUPER K, CASE 580K 4X4, 2004 JOHN DEERE 310SG, 1996 NEW HOLLAND 555E 4X4, MASSEY FERGUSON 50H

SKID STEER LOADERS

2008 CAT 297C, (3) 2008 CAT 277C, 2006 CAT 247B, 2005 ASV POSI-TRACK RC30, NEW HOLLAND L783, BOBCAT 742

TELEHANDLERS

2004 CAT TH560B 11,000LB, 1999 TEREX TH528 5,500LB

FORKLIFTS

2002 KOMATSU FG25ST-12

BOOM LIFTS

2005 GENIE Z-45/25 ARTICULATING 4X4

ROUGH TERRAIN CRANES

1985 P & H OMEGA 25 TON

ASPHALT PAVERS

2005 CAT AP655C MOBIL-TRAC, 2001 GILCREST PROPAVER 813RT

SOIL COMPACTORS

1979 CAT 815

VIBRATORY SMOOTH DRUM ROLLERS

GALION VOS-84A

VIBRATORY PADFOOT DRUM ROLLERS

SAKAI SV70TF

TANDEM VIBRATORY ROLLERS

2005 SAKAI SW320, 2006 MULTIQUIP AR13HA

WALK BEHIND COMPACTOR

2001 RAMMAX P33/24HMR, 2008 MULTIQUIP MIKASA MTX-70 VIBRATORY RAMMER, 2007 WACKER BS50-2i VIBRATORY RAMMER

BROOM TRACTORS

2008 BROCE KR350, 2007 BROCE KR350, (2) 2004 ROSCO CHALLENGER II, (2) 2005 NEW HOLLAND TN60A

UTILITY TRACTORS

1998 FORD-NEW HOLLAND 8160, 1997 FORD 5640 POWERSTAR SL 4X4, FORD 4610, (2) 2005 NEW HOLLAND TN60A, MASSEY FERGUSON 50E 4X4, (2) MASSEY FERGUSON 230

DRILLING EQUIPMENT

2005 DITCH WITCH JT2020 MACH 1 DIRECTIONAL BORING MACHINE, 1998 DITCH WITCH JT1720 DIRECTIONAL BORING MACHINE, 1988 DITCH WITCH 140DD EARTH AUGER

CABLE PLOWS

1998 DITCH WITCH 7610DD, 1996 DITCH WITCH 7510DD, DITCH WITCH 6510DD, DITCH WITCH 350SX

TRENCHERS

DITCH WITCH 6510DD, DITCH WITCH 5110DD

TRENCHING SUPPORT EQUIPMENT

2011 EFFICIENCY XLA SERIES 8 FT X 8 FT ALUMINUM TRENCH SHIELD

ENVIRONMENTAL EQUIPMENT

OLATHE 867TG TUB GRINDER w/ LOADER GRAPPLE, WOOD CHUCK BC12 PORTABLE BRUSH CHIPPER

EROSION CONTROL EQUIPMENT

EASY LAWN HD6001-60 HYDRO SEEDING WATER TRAILER, BOWIE VICTOR 800 HYDROSEEDER

AIR COMPRESSORS

2000 INGERSOLL-RAND 185WJD PORTABLE, 1995 INGERSOLL-RAND P185DWJD PORTABLE, 2003 INGERSOLL-RAND VHP90CMH PTO DRIVEN, (2) 1996 ATLAS COPCO XAS90JD PORTABLE, 1995 ATLAS COPCO XAS90JD, 2007 BELAIRE IRON SERIES, SULLAIR D185Q PORTABLE

GENERATOR SETS

CAT SR-4 (180KW) PORTABLE, ONAN 125DYD (125 KW), 1998 AMIDA OG-25KW PORTABLE, AMIDA CG-15KW PORTABLE, COLEMAN CK22V20SQ (20KW) PORTABLE, HONDA EM7000IS INVERTER SERIES

LIGHT TOWERS

2004 INGERSOLL-RAND LIGHTSOURCE PORTABLE

ATTACHMENTS

2003 TRAMAC DA450 CONCRETE DEMOLITION PROCESSOR, 2007 BTI BT8000 HYDRAULIC HAMMER/BREAKER, (3) GAR-BRO 483R CONCRETE BUCKETS, WAIN-ROY HYDRAULIC SWIVEL COUPLER EXCAVATOR ATTACHMENTS, WHEEL LOADER & LOADER BACKHOE ATTACHMENTS, SKID STEER LOADER ATTACHMENTS, 3PT HITCH TRACTOR ATTACHMENTS, DOZERS AND CRAWLER TRACTOR ATTACHMENTS & ACCESSORIES

ANTIQUE EQUIPMENT

1916 FRICK COMPANY ECLIPSE 788A PORTABLE STEAM ENGINE POWER UNIT





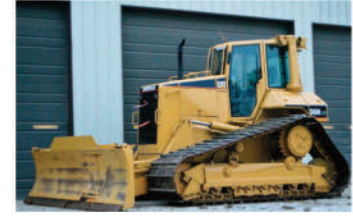
1943 CLARK C4837 US ARMY



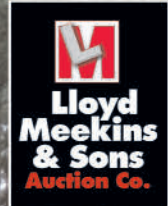
1977 CAT D7G



2002 CAT D5G XL SERIES



2005 CAT D6N LGP



2004 CAT D7R SERIES II CRAWLER



2006 CAT D5G LGP



2006 KOMATSU D41P-6



DRESSER TD-15E

Descriptions at our company website: www.meekinsauction.com





2005 CAT 420D 4X4



2002 CAT 430D 4X4



2006 TEREX TA40 GENERATION 7



2007 BTI BT8000 HAMMER



2002 KOMATSU FG25ST-12



2004 VOLVO L120E



2007 DEERE 410J 4X4



2005 CAT AP655C MOBIL-TRAC



P & H OMEGA 25 TON



2003 TRAMAC DA450 CONCRETE DEMOLITION PROCESSOR



2005 GENIE Z45 - 25 (4X4) ARTICULATING BOOM LIFT



1979 CAT 815 SOIL COMPACTOR



2008 CAT 297C



JOHN DEERE 770B



2004 JOHN DEERE 310SG - LOW METER HRS



1985 CAT 613C 5,000 GALLON WATER WAGON

Descriptions at our company website: www.meekinsauction.com

AGRICULTURAL EQUIPMENT

A Partial List to Date Includes the Following.

COMBINES

2011 CASE IH AXIAL-FLOW 6088 4WD, sn:YBG006529, equipped w/ A/C Cab, Cummins 8.3L (335HP) engine, 3 speed hydrostatic drive transmission, buddy seat, leather seats, Voyager backup camera, AFS AccuGuide guidance system, AFS Harvest control system, automatic header recognition, 10,500 liter grain tank, Goodyear 520/85R 42 front dual tires, Goodyear 600/65R 28 rear tires, meter reading: 173 hrs, 95 separator hrs

HEADERS

2012 CASE IH 3408 CORN HEAD, sn:YCS022024, equipped w/ 8 row working capability, 30 inch spacing, stainless steel auger pan, hydraulic deck plates, **2012 CASE IH 3020 TERRA FLEX GRAIN HEAD PLATFORM**, sn:YBZL59129, equipped w/ 30 ft working width capability, flex header series

HEADER WAGONS

(2) 2012 HORST CHC36 HEADER WAGONS, equipped w/ quick release system, universal header mount, adjustable top rail, 2 wheel steering, 10,000LB rated capacity, 36 ft maximum head size, Carlisle 26 x 12.00-12 farm service tires

AGRICULTURAL TRACTORS

2012 CASE IH MAGNUM 290 (4WD) ROW-CROP TRACTOR, sn:ZBRD08309, equipped w/ A/C Cab, 6 cyl (284HP) 8.7L engine, power shift transmission, Voyager backup camera, AFS AccuGuide GPS guidance and Harvest Control System, Early Riser III monitor, front weights package, differential lock, luxury cab series, work light package, three point quick hitch, pto, draw bar, 4 hydraulic remote outlets, Firestone 480/70R 34 front tires, Firestone 520/85R 46 rear dual tires, meter reading: 207 hrs, **2011 CASE IH MAXXUM 140 (4WD) ROW-CROP TRACTOR**, sn:ZBBE15826, equipped w/ A/C Cab, 6 cyl (140HP) 6.7L engine, auto shift transmission, work light package, front weights, three point hitch, pto, draw bar, triple hydraulic remote outlets, Michelin 380/85R 30 front tires, Michelin 480/80R 42 rear tires, Limited Edition series, meter reading: 154 hrs

TILLAGE EQUIPMENT

2012 CASE IH TRUE TANDEM 330 TURBO DISC HARROW, sn:JFH0054001, equipped w/ 30 ft working width capability, (80) disc blades, dual hydraulic folding wings, hy-

draulic leveling system, bolt on pull type hitch, **2011 UNVERFERTH RIPPER-STRIPPER 330 TILLAGE PLANTER ATTACHMENT**, sn:A54470104, equipped w/ 8 row working capability, vacuum seed metering system, special-alloy deep till shanks with automatic reset, tool bar, row markers, rolling harrow baskets, lift-assist package, comes with **2012 CASE IH EARLY RISER 1210 PLANTER**, sn:YBS028743, 8 row, no till, rear dolly, distributor hoppers, fits three point hitch tractors, **2012 UNVERFERTH PERFECTA II FIELD CULTIVATOR**, sn:A52900380, equipped w/ 20 ft working width capability, dual hydraulic folding wings, rolling harrow baskets, fits three point hitch tractors, **CASE IH 184 MT SERIES FIELD CULTIVATOR**, **LELY ROTERRA POWER HARROW CRUMBLER**, **(2) 2014 ATLAS MODEL 500 DISC HARROWS**, **BUSH HOG 6400 ROLLING CULTIVATOR**, **CASE IH 496 FLEX WING DISC HARROW**, **(2) CASE IH 3900 FLEX WING DISC HARROWS**

PLANTING & SEEDING EQUIPMENT

2011 UNVERFERTH RIPPER-STRIPPER 330 TILLAGE PLANTER ATTACHMENT, sn:A54470104, equipped w/ 8 row working capability, vacuum seed metering system, special-alloy deep till shanks with automatic reset, tool bar, row markers, rolling harrow baskets, lift-assist package, comes with **2012 CASE IH EARLY RISER 1210 PLANTER**, sn:YBS028743, 8 row, no till, rear dolly, distributor hoppers, fits three point hitch tractors, **2002 CASE IH 1200 SERIES ASM PLANTER**, sn:JAG1035177, equipped w/ vacuum advanced seed metering system, 8 row, ridgid mounted frame type, 36 inch wide spacing, chemical and dry fertilizer hoppers, hydraulic fold, fits three point hitch tractors, **JOHN DEERE 7000 6-ROW PLANTER**, **JOHN DEERE 7000 4-ROW PLANTER**

GRAIN HARVESTING EQUIPMENT

KILLBROS 300 GRAVITY WAGON

LIVESTOCK EQUIPMENT

NEW HOLLAND 355 PORTABLE FEED MILL, **LIVESTOCK TRAILER**

ANTIQUE TRACTORS

1955 INTERNATIONAL HARVESTER 300, **J.I. CASE VAI INDUSTRIAL SERIES**, **1941 INTERNATIONAL HARVESTER FARMALL AV**



2012 CASE IH MAGNUM 290 4WD



Preview Complete Auction Inventory w/Pictures and Equipment



2011 CASE IH MAXXUM 140 4WD

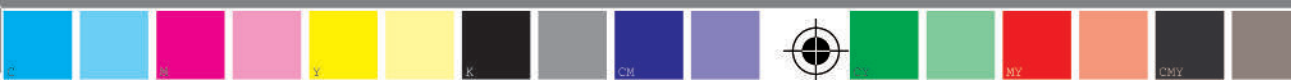


2011 CASE IH AXIAL-FLOW 6088 4WD

Descriptions at our company website: www.meekinsauction.com

Modification: D:\2014\12\16081120-05-00-
WD 100 \rsi\luc\ C:\75615 X:\75615 Y:\75615 X:\75615
ID: Kellei

\\uspress-rip\01_Jobs\12046 Meekins\EPS-PDF for Rampage\12046 Brochure.pdf Page 9 Title: Layout 1 Creator: QuarkXPress(R)
2400.0 dpi (Screened Data File POS, Right-Reading, Color-Seqs, Std-CVF Simulated Spot Colors) [TRAP ABO:100 Scaling Percent
PS Version: 3015.102 HQN Version 9.0 Revision 2 RSL, Ripped on Tuesday, December 16, 2014 8:30:34 AM
ID: Kellei





2011 UNVERFERTH RIPPER-STRIPPER 330 with
2012 CASE IH EARLY RISER 1210 PLANTER



1997 FORD 5640 POWERSTAR SL 4X4



(3) CASE IH 3900 FLEX-WING DISC HARROWS



2012 CASE IH 3020 TERRA FLEX GRAIN
HEAD - 2012 HORST CHC36 HEADER WAGON



2012 CASE IH 3408-30



2002 CASE IH 1200 SERIES ASM PLANTER



OLATHE 867TG TUB GRINDER WITH
LOADER GRAPPLE



2012 BUSH HOG 121-09 REAR DRAG BLADE



2012 UNVERFERTH PERFECTA II FIELD CULTIVATOR



1994 KENWORTH T800 - CUMMINS 400HP



1997 GROVE TMS750B 50 TON



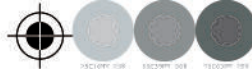
2001 STERLING LT8500 ALL WHEEL DRIVE - ALTEC AM855 85 FT



1999 MACK RD688S



Descriptions at our company website: www.meekinsauction.com



TRUCKS AND TRAILERS

A Partial List to Date Includes the Following.

TRUCK TRACTORS

1999 MACK CH613 DAY CAB TRI/A, 1994 KENWORTH T800 DAY CAB T/A, FORD F700 DAY CAB S/A

DUMP TRUCKS

1999 MACK RD688S T/A, 1994 FREIGHTLINER FLD SERIES T/A, 1993 INTERNATIONAL 9400 T/A, (2) 1997 INTERNATIONAL 4700 S/A, INTERNATIONAL 1854 S/A, 1996 FORD F-SERIES S/A, 1997 DODGE RAM 3500 DUALY

FLATBED TRUCKS

2003 FORD F-350XL SUPERDUTY DUALY 6.0L POWERSTROKE, 1999 FORD F-550XLT SUPERDUTY DUALY 7.3L POWERSTROKE, 1989 FORD F-350 DUALY 7.3L POWERSTROKE with Cameo Truck Camper accessory, 1986 FORD F700, 1983 FORD F700

CAB & CHASSIS TRUCKS

1988 MACK R690ST T/A, 1993 INTERNATIONAL PAYSTAR F5070 T/A, 1996 INTERNATIONAL 4700 S/A, 1987 FORD F700 S/A

HYDRAULIC CRANE TRUCKS

1997 GROVE TMS700B 50 TON with 170 FT reach height capability, 1997 FORD F800-NATIONAL CRANE 500C 15 TON

BUCKET TRUCKS

2001 STERLING LT9513 ALL WHEEL DRIVE-ALTEC 93 FT, 2000 FREIGHTLINER FL80-ALTEC A755L 60 FT, 1990 FORD F700-ALTEC AA600 60 FT, 2003 INTERNATIONAL 4400-HI RANGER SC11 36 FT

WATER TRUCKS

(2) 1988 MACK RS686LS 3,500 GALLON

VAN TRUCKS

1992 GMC TOPKICK, 1988 GMC SIERRA 7000

COMMERCIAL CARGO VANS

2001 DODGE RAM 2500

BUSES

2001 THOMAS MVP SAFTLINER 78 PASSENGER

FUEL & LUBE TRUCKS

1992 GMC TOPKICK T/A, equipped w/ (5) product tanks

MECHANIC TRUCKS

2001 INTERNATIONAL 4900

SERVICE TRUCKS

2007 ISUZU NQR, 1997 INTERNATIONAL 4700, 2007 FORD F-350XL SUPERDUTY, 2006 FORD F-350XL SUPERDUTY, 2002 FORD F-250XL SUPERDUTY EXTENDED CAB 4X4, 1999 FORD F-250 SUPERDUTY 7.3L POWERSTROKE, 1997 FORD F-250 HEAVY DUTY, 1996 CHEVROLET 3500 CREW CAB DUALY

PICKUPS

1997 FORD F-350XL CREW CAB POWERSTROKE 7.3L, 2005 FORD F-250XL SUPERDUTY CREW CAB, 2003 FORD F-250XL SUPERDUTY EXTENDED CAB, 2002 FORD F-250XL SUPERDUTY EXTENDED CAB, 2013 FORD F-150 CREW CAB 4X4, 2006 FORD F-150XLT CREW CAB, RD F-150XL, 2003 F2006 DODGE RAM 1500 SLT CREW CAB, 1997 DODGE RAM 3500 LARAMIE SLT EXTENDED CAB DUALY 4X4, 2014 GMC SIERRA 1500 DOUBLE CAB SLE (16,023 miles)

LOWBOY TRAILERS

1998 FONTAINE TB35NCB 35 TON, 1995 ROGERS CR35PL 35 TON, 1988 WITZCO-CHALLENGER RG35 SERIES 35 TON, HYSTER TRI AXLE 40 TON
STEP DECK TRAILERS: 2001 HOOVER 12 TON

STEP DECK TRAILERS

2001 HOOVER 12 TON

FLATBED TRAILERS

1995 FONTAINE FTW-4-8048 48 FT

TAG EQUIPMENT TRAILERS

MILLER 16 TON TILT DECK, 2001 MCELGRAPH 15 TON, 1999 HUDSON 12 TON, REID'S E25 12 TON, 2001 HOOVER 9 TON, 1997 HOOVER 9 TON, 1992 HOOVER 9 TON

END DUMP TRAILERS

1998 EAST 24 FT ALUMINUM TRI/A, 2011 HAWKE 820HH4F GOOSENECK 20 FT T/A, 1995 HOOVER 24 FT GOOSENECK T/A

VAN TRAILERS

1990 WABASH SA-102CW 102 INCH X 48 FT, 1989 THEURER ISSC-480-A-10 102 INCH X 48 FT

CARGO TRAILERS

2013 HAULMARK PASSPORT

CABLE REEL TRAILERS

2008 TSE T30/36VGR V-GROOVE TENSIONER CABLE REEL TRAILER

ROLL OFF TRAILERS

2008 IMPERIAL R0GNT127T GOOSENECK T/A

ROLL OFF CONTAINERS

(2) 2008 IMPERIAL 20 CUBIC YARD ROLL OFF CONTAINERS

CONEX STORAGE CONTAINERS

(15) 40 FT CONEX STORAGE CONTAINERS, (10) 20 FT CONEX STORAGE CONTAINERS

CLASSIC/COLLECTOR CARS

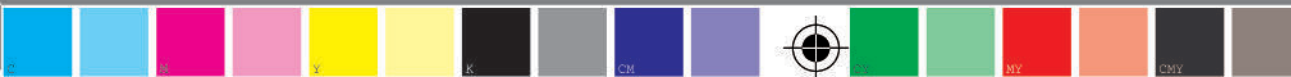
1925 HUPP MOBILE, 1940 FORD DELUXE, 1948 CHRYSLER NEW YORKER HIGHLANDER, 1956 FORD CUSTOMLINE, 1965 FORD LTD GALAXIE 500, 1972 DODGE CHALLENGER RALLYE

SPECIALTY ITEMS

2004 SHOPMADE CUSTOM PORTABLE DUAL BARBECUE GRILL

OTHER ITEMS TO INCLUDE

AUTOMOBILES, SPORT UTILITY VEHICLES, VANS, UNUSED MAGNUM GOLD 4000 INDUSTRIAL HOT WATER PRESSURE WASHERS, UTILITY TRAILERS, WELDING EQUIPMENT, INDUSTRIAL SHOP EQUIPMENT, EQUIPMENT PARTS & ACCESSORIES, TRUCK PARTS AND ACCESSORIES, HAND TOOLS, LANDSCAPING & LAWN MAINTENANCE EQUIPMENT, AGRICULTURAL FIELD EQUIPMENT, BUILDING SUPPLIES, CONTRACTOR TOOLS AND ACCESSORIES, COLLECTIBLE ITEMS, LIGHT DUTY SUPPORT EQUIPMENT, GOLF CARTS, GO-CARTS, ALL TERRAIN VEHICLES, AND MUCH MUCH MORE





2007-2006 FORD F-350XL SUPERDUTY SERVICE TRUCKS



2008 TSE T30-36VGR V-GROOVE TENSIONER REEL TRAILER



1996 FORD F-SERIES DUMP



1 OF 2 - 1988 MACK RS686LS 3,500 GALLON WATER TRUCKS



2007 ISUZU NQR CREW CAB



1998 EAST 24 FT ALUMINUM END DUMP



2001 THOMAS MVP SAFTLINER 78 PASSENGER



1998 FONTAINE TB35NCB 35 TON



1994 FREIGHTLINER FLD SERIES DUMP



2000 FREIGHTLINER FL80 - ALTEC A755L



1997 INTERNATIONAL 4700 - FIBERGLASS SERVICE BODY



1995 ROGERS CR35PL 35 TON



2003 INTERNATIONAL 4400 - HI RANGER SC11 36 FT



1999 FORD F-550XL 7.3L DIESEL - 2011 HAWKE 820HH4F END DUMP



1997 DODGE RAM 3500 DUALY DUMP

Descriptions at our company website: www.meekinsauction.com



1925 HUPP MOBILE



1940 FORD DELUXE COUPE



1948 CHRYSLER NEW YORKER HIGHLANDER



1956 FORD CUSTOMLINE



1965 FORD LTD GALAXIE 500



1972 DODGE CHALLENGER RALLYE



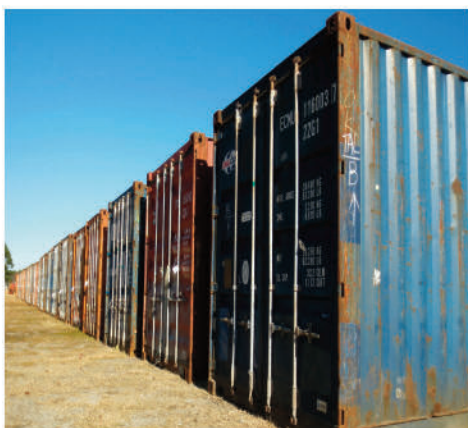
2013 HAULMARK PASSPORT CARGO TRAILER



2014 GMC SIERRA DOUBLE CAB SLE



2014 MAGNUM 4000 GOLD SERIES PRESSURE WASHERS



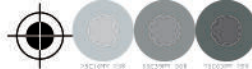
LARGE QTY OF 40 FT & 20 FT CONEX STORAGE CONTAINERS



LARGE SELECTION OF CLUB CAR GOLF CARTS



LONG HORN BARBECUE GRILL



REAL ESTATE

AUCTION

TUESDAY, DECEMBER 30th, 2014 at 1:00 p.m.

SALE SITE LOCATION:
4070 NC HWY 211 EAST,
LUMBERTON, NC 28358

REAL ESTATE TO BE SOLD AT MEEKINS AUCTION DRIVE-THRU FACILITY



PROPERTY 1

- **General Details:** Approx .793 acres, located in Robeson County, North Carolina, inside Lumberton, NC city limits, property is a prime commercial corner lot located on Roberts Avenue (NC 72) and Fifth Street (NC 211) intersection. High visibility location with high traffic count daily, great location for gas station or fast food restaurant
- **Access:** Interstate I-95 Highway and Interstate I-74 Highway within 10 mile square radius
- **Buyers Premium:** 10 percent
- **Payment Terms:** 10 percent down payment on day of auction and remaining balance within 30 days
- **Contact Info:** For more information on these properties or to set an appointment for property viewing, contact Brad Martin with Remax Real Estate Company, Broker License 192211, mobile: 910.733.6006, office: 910.738.1466, or email: bradmartin@remax.net

PROPERTY 2

- **General Details:** Approx 7.3 acres, located in Robeson County, North Carolina, outside Lumberton, NC city limits, property is zoned Agricultural by Robeson County but adjoins commercial zoning, High visibility property from Interstate I-95 and Interstate I-74 traffic
- **Access:** Interstate I-95 Highway and Interstate I-74 Highway within 1 mile square radius, 5 miles from Lumberton, NC municipal airport, 80 miles from Wilmington, NC Ports, 40 miles from Fort Bragg Military Base
- **Buyers Premium:** 10 percent
- **Payment Terms:** 10 percent down payment on day of auction and remaining balance within 30 days
- **Contact Info:** For more information on these properties or to set an appointment for property viewing, contact Brad Martin with Remax Real Estate Company, Broker License 192211, mobile: 910.733.6006, office: 910.738.1466, or email: bradmartin@remax.net

PROPERTY 3

- **General Details:** Approx 2.27 acres located on Shannon Road in Robeson County, North Carolina, outside Lumberton, NC city limits, property is zoned commercial
- **Access:** Property is located 2 miles from Shannon, NC
- **Buyers Premium:** 10 percent
- **Payment Terms:** 10 percent down payment on day of auction and remaining balance within 30 days
- **Contact Info:** For more information on these properties or to set an appointment for property viewing, contact Brad Martin with Remax Real Estate Company, Broker License 192211, mobile: 910.733.6006, office: 910.738.1466, or email: bradmartin@remax.net



Auction Conducted By:
Lloyd Meekins & Sons Realty and Auction Company
4070 NC Hwy 211 East - Lumberton, NC 28358
Office Phone: 910.739.0547 • Office Fax: 910.738.1389
Email: info@meekinsauction.com
NC Firm License: #858 • Broker License: 186605

UPCOMING ABSOLUTE

AUCTION

SALE SITE LOCATION:
4078 NC HWY 111/122 SOUTH,
PINETOPS, NC 27864

WEDNESDAY, JANUARY 28th, 2015 and THURSDAY, JANUARY 29th, 2015

Featuring equipment and trucks from **TRICO ELECTRIC COMPANY – ESTATE OF MR. JOHN R. JENKINS (DECEASED)**

Trico Electric Company specialized in transportation highway work and general contracting for commercial and industrial customers over 50 years. This company has maintained all their equipment and trucks over the years and they are in excellent job ready condition. From earth moving equipment, heavy duty trucks, trailers, job products and supplies, or to support equipment, this auction will have some quality late model equipment and trucks up for sale.

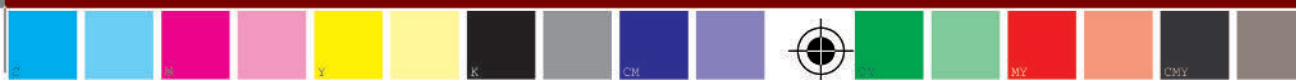
Auction to also feature Mr. John R. Jenkins collection of classic cars, which includes large selection of big block engines, frames, parts and accessories, large selection of mechanic tools and industrial shop equipment, antique collectible items, and much, much, more. Make plans today to attend, for this is one auction you will not want to miss!

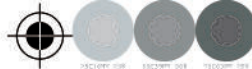
- **Notes:** Absolute consignments will be accepted and there will be no sales tax charged on this auction on items belonging to TRICO ELECTRIC COMPANY.
- **Contact one our sales representatives today!**

Trey Meekins, 910.258.4383, trey@meekinsauction.com
E.B. Webb, 252.245.1405, ebwebb@meekinsauction.com



Descriptions at our company website: www.meekinsauction.com





For up-to-date auction inventory, with pictures
and descriptions, visit our company website
www.meekinsauction.com



2008 JOHN DEERE 1050J CRAWLERS

**20th ANNUAL DECEMBER
CONTRACTOR'S
AUCTION**
TUESDAY, DECEMBER 30, 2014
8:00 AM
LUMBERTON, NC



LLOYD MEEKINS & SONS AUCTION CO.
4070 NC HWY. 211 E
LUMBERTON, NC 28358
www.meekinsauction.com

FIRST-CLASS MAIL
PSRST
U.S. Postage
PAID
U.S. Press
31601

Time sensitive
material, please
deliver promptly.

RETURN SERVICE REQUESTED

t Modification: D:\2014\12\16082655-05\00' Producer: QuarkXPress(R) 8.5 Creation Date: D:\2014\12\16081520-05\00'
WD 100 \rsi\luc\ C:\175615 M:\175675 Y:\17580 X:\175645] bleed: 0.125 margin size: 0.375

\\uspress-rip\01_Jobs\12046 Meekins\EPS-PDF for Rampage\12046 Brochure.pdf Page 16 Title: Layout 1 Creator: QuarkXPress(R)
2400.0 dpi (Screened Data File POS, Right-Reading, Color-Seqs, Std-CVF Simulated Spot Colors) [TRAP ABO:100 Scaling Percent
Cyan Magenta Yellow Black
PS Version: 3015.102 HQN Version 9.0 Revision 2 RSL, Ripped on Tuesday, December 16, 2014 8:27:17 AM
ID: Kelleiv

