

# ABSOLUTE AUCTION

FEATURING EQUIPMENT AND TRUCKS FROM

## TRICO ELECTRIC COMPANY

ESTATE OF MR. JOHN R. JENKINS (DECEASED)

WEDNESDAY-THURSDAY, JANUARY 28-29, 2015 • 9:00 AM

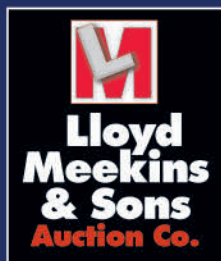


1999 INTERNATIONAL 4700

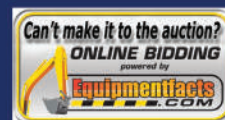


TALBERT T3D-40S-HRG-1-T1 40 TON LOWBOY

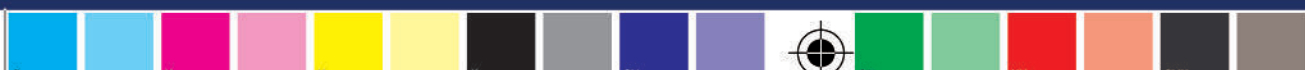
**SALE SITE LOCATION:**  
4078 NC HIGHWAY 122 SOUTH, PINETOPS, NC 27864



Auction Conducted By:  
**Lloyd Meekins & Sons Auction Company**  
4070 NC Hwy 211 East - Lumberton, NC 28358  
Office Phone: 910.739.0547 • Office Fax: 910.738.1389  
Email: [Info@meekinsauction.com](mailto:Info@meekinsauction.com) • NC Firm License # 858



\\naspress-rip01\Jobs\112200 Meekins\BPS-PDF for Rampage\112200 catalog.pdf Page 1 Creator: Adobe InDesign CC 2014 (Macintosh) Modification: D:\20150109152731-05\001 WD 100 \rsi\luc\ C:\175615 X:\175675 Y:\17580 X:\175845 ] bleed: 0.125 margin size: 0.375  
2400.0 dpi (Screened Data File POS, Right-Reading, Color-Seqs, Std-CMYK Simulated Spot Colors) [ TRAP ABO:100 Scaling Percent  
PS Version: 3015.102 Hqn Version 9.0 Revision 2 RSL, Ripped on Friday, January 09, 2015 4:00:27 PM  
ID: Kelleve



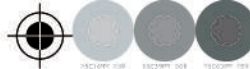




OFFERING ENTIRE CONTENTS FROM 1 OF 4  
WAREHOUSE SHOP FACILITIES TO BE SOLD ON DAY 2







### AUCTIONEER NOTE:

**TRICO ELECTRIC COMPANY** specialized in the electrical construction and general contracting for commercial and industrial customers over 50 years. This company was owned and operated by the late Mr. John R. Jenkins, who was known throughout the contractor community as one who has mastered his or her profession in the construction job field market. If you specialize in the electrical construction field or practice the profession of selling parts or supplies within this industry, this auction will be one you will not want to miss.

## SAVE THE DATES ON YOUR CALENDAR,

for this is one auction you will not want to miss! Over 2,000 Lots to be sold!!!

### TRANSPORTATION EQUIPMENT to be featured in auction includes:

Truck Tractors, Dump Trucks, Hydraulic Crane Boom Trucks, Bucket Trucks, Digger-Derrick Trucks, Mechanic Trucks, Service Utility Trucks, Dry Van Trucks, Cab & Chassis Trucks, Pickups, Fleet Vehicles, Lowboy Trailers, Equipment Tag Trailers, Step Deck Trailers, Flatbed Trailers, Gooseneck Trailers, End Dump Trailers, Dry Van Trailers, Cargo Trailers, Utility Trailers, Truck & Trailer Parts and Accessories, **Large Quantity of Salvage Trucks, Trailers, Fleet Vehicles, and Automobiles**

### CONSTRUCTION EQUIPMENT to be featured in auction includes:

Komatsu PC300LC-5 Hydraulic Excavator, Cat D6C Crawler Dozer, Cat 926E Wheel Loader, John Deere 310B Loader Backhoe, Bobcat 731 Skid Steer Loader, Motor Graders, Utility Tractors, Agricultural Tractors, Trenchers, Rough Terrain Mast Forklifts, Warehouse Forklift Trucks, Rough Terrain Cranes, Portable Generators and Air Compressors, Portable Light Plants and Arrow Boards, (4) 40 FT Conex Storage Containers, Construction Equipment Attachments, Large Quantity of Unused Skid Steer Loader Attachments, Agricultural Attachments and Implements, Equipment Parts and Accessories

### 4 WAREHOUSES/SHOPS to be featured in auction includes:

**Industrial Shop Equipment** (KOIKE "IK" 54-D TYPE AUTOMATIC GAS CUTTING MACHINE, SHEAR PRESSES, CLAUSING 1660 DRILL PRESS, KALAMAZOO 130 HORIZONTAL METAL BAND SAW, LOBO POWER TOOLS 18 INCH WOOD BAND SAW, SCOTCHMAN BEWO 350LT COLDSAW, DELTA INDUSTRIAL SANDERS & GRINDERS, (2) CINCINNATI 21 1/2 ENGINE LATHES, CINCINNATI TRAY-TOP CINTILATHES, MONARCH CK12 ENGINE LATHE, BROWN & SHARPE NO.2 SERIES SPINDLE SCREW MACHINE, BRIDGEPORT BH3049 MODEL SERIES DRILL PRESS, CENTRAL MACHINERY ZAY7032G MILLING DRILLING MACHINE, POWERMATIC 1200 MODEL SERIES DOUBLE DRILL PRESS, BIRO INDUSTRIAL MEAT SAW, CRAFTSMAN 150 DRILL PRESS, BOICE CRANE CS30/S DRILL PRESS, DAKE ARBOR PRESS 1 1/2B, and much much more)

(2) TP012 (12,000LB CAP) Two Post Automotive Lifts, Tool Chest and Cabinet Combo Sets (Clarke HD Plus, Craftsman, U.S. General, and Mac Tools), Engine Stands, Jack Stands, Steel Shop Tables, Hydraulic Floor Jacks, Pneumatic Shop Tools, Large Quantity of Parts Bins and Storage Systems, Engine Hoists, Shop Fans and Heaters, Utility Carts and Stands, Large Quantity of Welding Equipment, Pipe Threading Machines, Compact Light Duty Generator Sets and Air Compressors, Portable Shop Trolley Cranes, Industrial Shop Shelving Systems, Chain Hoists, Portable Shop Conveyors, Hypertherm Plasma Cutting System and Tools, Large Quantity of Metal and Iron Building Material, Metal Storage Racks, Greenlee Jobsite Chest Storage Boxes, Dynamometer and Dyno Shop Mechanic Tools, Tripod Shop Lights, Dayton 5,000LB Hydraulic Hand Pallet Trucks, Light Duty Water Pumps, Large Quantity of Ladders, Jobsite Tools and Support Equipment, Construction Materials and Job Supply Products, Job Safety Equipment, and much much more, visit our website for more information • [meekinsauction.com](http://meekinsauction.com)

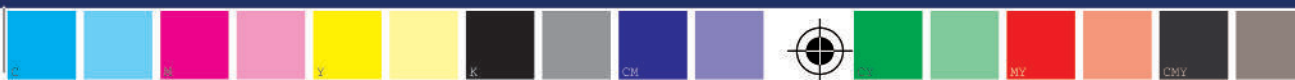
**LARGE SELECTION OF QUALITY ELECTRICAL AND ELECTRONIC PRODUCTS AND SUPPLIES** for a broad range of Commercial and Residential Electrical Construction, Industrial and Utility Applications. New and Used Products from HUBBELL-RACO, SQUARE D, CONBRACO, GOULD ELECTRONICS, THOMAS & BETTS, SCOTCHLOK, THE WIREMOLD COMPANY, MULBERRY, APPLETON, DIALIGHT, NEER, MINERALLAC, CARLON, TEKNOR APEX, etc.

Auction to also feature Mr. John R. Jenkins collection of classic cars, parts, and accessories, large selection of big block and small block engines, frames, transmissions, hoods, doors, light fixtures, seats, large quantity of mechanical, exterior and interior parts and accessories for classic antique collectible cars.

## Meekins Auction Company

Meeting the needs and expectations of its customers for over 50 Years

Descriptions at our company website: [www.meekinsauction.com](http://www.meekinsauction.com)



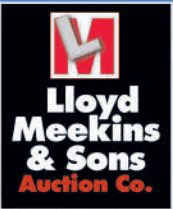




MASSEY FERGUSON 4500 SERIES



1970 CAT D6C



LONG 2510 UTILITY



CAT 926E



JOHN DEERE 310B



1992 KOMATSU PC300LC-5L



LARGE SELECTION OF FLEET VEHICLES



LARGE QUANTITY OF SALVAGE VEHICLES AND EQUIPMENT

\\naspress-rip\01\_Jobs\112200 Meekins\EPF-PDF for Rampage\112200 catalog.pdf Page 4 Creator: Adobe InDesign CC 2014 (Macintosh) [ TRAP ABO:100 Sealing Percent  
2400.0 dpi (Screened Data File POS, Right-Reading, Color-Steps, Std-CMY Sealing Percent)  
PS Version: 3015.102 HQN Version 9.0 Revision 2 RSL, Ripped on Friday, January 09, 2015 5:06:04 PM  
ID: Kelleve

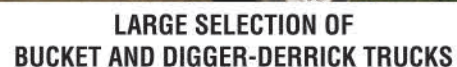




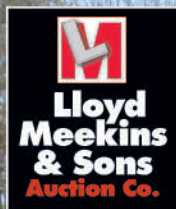


Descriptions at our company website: [www.meekinsauction.com](http://www.meekinsauction.com)

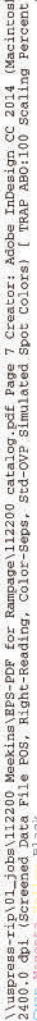




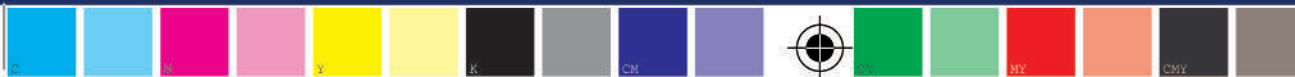




Modification: D:\20150109\155349-05\00' Producer: Adobe PDF Library 11.0 Creation Date: D:20150109\152731-05\00' WMD 100 \rsi\Lut\ C:\15615 M:175675 Y:17580 X:175645 J bleed: 0.125 margin size: 0.375



**Descriptions at our company website: [www.meekinsauction.com](http://www.meekinsauction.com)**







**LLOYD MEEKINS & SONS AUCTION CO.**  
4070 NC HWY. 211 E  
LUMBERTON, NC 28358  
[www.meekinsauction.com](http://www.meekinsauction.com)

FIRST-CLASS MAIL  
PRSR  
U.S. Postage  
**PAID**  
U.S. Press  
31601

RETURN SERVICE REQUESTED

**Trico**

**Trico**

# ABSOLUTE AUCTION

FEATURING EQUIPMENT & TRUCKS FROM  
**TRICO ELECTRIC COMPANY**  
ESTATE OF MR. JOHN R. JENKINS (DECEASED)  
**WEDNESDAY-THURSDAY, JANUARY 28-29, 2015**  
**9:00 AM • PINETOPS, NC**

## AUCTION TERMS

- Every Item is sold as-is, where is.
- No Guarantees or warranties, expressed or implied. This brochure is only a guide. Please inspect equipment before bidding!
- **NOTE: If interested in one item, please contact to insure availability.**
- **ADMINISTRATION FEE:** Items selling for \$2,500 or less are subject to a ten percent administration fee on each item; Items selling over \$2,500 are subject to a five percent administration fee on each item. **Online Bidders** will be charged an additional two percent Internet Purchase Fee on all online purchases
- **PAYMENT TERMS:** All payments are made in US funds. Methods of payment are cash, wire transfer, certified/ cashiers check, or company/ personal check accompanied with bank letter guaranteeing payment to Lloyd Meekins & Sons Auction Company. Equipment will not be released from sale site until purchases have been paid in full.
- **SALES TAX EXEMPTION:** Buyers qualifying for sales tax exemption must present a copy of their sales tax I.D. numbers and complete a NC certificate of exemption (E595-e), or have a current exemption form on file, in order to be exempted from sales tax on applicable purchases.
- **SALES TAX:** There will be no sales tax charged on this auction on items belonging to Trico Electric Company. All third party consignment items are subject to state and local tax law. The North Carolina Sales Tax (Edgecombe County) is 7.00% and applies to all sales, unless proper tax exemption forms are completed.
- **EXPORT EXEMPTIONS:** Buyers purchasing for export must complete and execute a NC affidavit of export (E599-C) for sales tax exemption. Items will not be released until this required document is received.
- **FOR THEIR SAFETY- NO CHILDREN ARE ALLOWED ON SALE SITE!**
- **VEHICLE TITLE INFO:** All title- item purchases will be charged a \$30 title-processing fee. All titles will be mailed out within 15 business days after payment has been received.
- **SALES REPRESENTATIVES AND SALE SITE MANAGERS:** Trey Meekins, 910.258.4383, [trey@meekinsauction.com](mailto:trey@meekinsauction.com)  
EB Webb, 252.245.1405, [ebwebb@meekinsauction.com](mailto:ebwebb@meekinsauction.com)  
Rona West, Office Manager, 910.739.0547, [rona@meekinsauction.com](mailto:rona@meekinsauction.com)  
Avery Brewer, Sale Site Manager, 910.608.9457
- **AUCTIONEERS:** Lloyd "Mickey" Meekins, Jr. #228, Lloyd "Trey" Meekins, III #8137

## INSPECTION/REGISTRATION/ EQUIPMENT REMOVAL DATES

- **EQUIPMENT INSPECTION DATE:** Tuesday, January 27, 2015 from 8:00 am until 6:00 pm
- **BIDDER REGISTRATION** Begins Monday, January 26, 2015
- **REMOVAL OF EQUIPMENT DEADLINE:** All equipment must be removed from sale site by Thursday, February 12, 2015. Equipment not removed by designated date, buyer may be charged storage fees upon discretion. Removal of equipment and insurance is the buyers responsibility.
- **OFFICE AND YARD OPERATING HOURS:** Open Monday thru Friday 8:00 am until 5:00pm. Closed weekends.

## DIRECTIONS TO SALE SITE

- From INTERSTATE I-95 NORTH BOUND, take EXIT 138 to merge onto US-64 EAST toward Rocky Mount, go 18.6 miles, take EXIT 484 for North Carolina 122 toward Edgecombe Community College, Turn RIGHT off exit onto NC-122 SOUTH, go 0.6 miles, Turn RIGHT onto NC-111 SOUTH/NC-122 SOUTH, go 4.5 miles and sale site will be located on the right side of the road.

**GPS SALE SITE LOCATION:**  
**4078 NC Highway 122 South, Pinetops, NC 27864**

## ACCOMMODATIONS

- **Courtyard By Marriott-**  
250 Gateway Blvd, Rocky Mount, NC 27804 • 252.627.7468
- **Residence Inn-**  
230 Gateway Blvd, Rocky Mount, NC 27804 • 252.451.5600
- **Comfort Inn-**  
200 Gateway Blvd, Rocky Mount, NC 27804 • 252.937.7765
- **Hampton Inn-**  
530 N. Winstead Avenue, Rocky Mount, NC 27804 • 252.937.6333



**Online Bidding Registration:**  
**register at [equipmentfacts.com](http://equipmentfacts.com) or call 908.788.2025**

(Note: Online Registration must be completed before the date of the auction.)

## CONSIGNMENT INFORMATION

Interested in selling your equipment or trucks for this major auction, then choose Meekins Auction Company to turn your valuable assets into cash returns. Selling Benefits to help your company achieve the best return on the sale of your assets.

If you or your company are interested in selling your surplus equipment and trucks for this major auction, please contact us today!

Contact one of our Auction Sales Representatives.

- **Mickey Meekins** – 910.258.1705
- **Trey Meekins** – Mobile: 910.258.4383 or email: [trey@meekinsauction.com](mailto:trey@meekinsauction.com)
- **E.B. Webb** – Mobile: 252.245.1405 or email: [ebwebb@meekinsauction.com](mailto:ebwebb@meekinsauction.com)

**Consignments will be accepted until  
Monday, January 26, 2015**

**LOOKING TO LIQUIDATE YOUR  
SURPLUS EQUIPMENT AND TRUCKS FOR THIS  
MAJOR AUCTION!**

- **Flexible Contract Options** (Net Guarantee, Straight Commission, Out-Right Purchase, Off Site Auctions)

## AUCTION SELLING SCHEDULE

### DAY 1: WEDNESDAY, JANUARY 28

CONSTRUCTION EQUIPMENT, HEAVY DUTY TRUCKS AND TRAILERS, PICKUPS AND FLEET VEHICLES, UTILITY TRAILERS, AGRICULTURAL EQUIPMENT, CONSTRUCTION ATTACHMENTS, SUPPORT EQUIPMENT, CONEX STORAGE CONTAINERS, CONTRACTOR JOBSITE SUPPLIES & ACCESSORIES, LARGE QUANTITY OF SALVAGE TRUCKS, TRAILERS, AND EQUIPMENT

### DAY 2: THURSDAY, JANUARY 29

ALL CONTENTS LOCATED INSIDE THE (4) WAREHOUSE/ SHOP FACILITIES BELONGING TO TRICO ELECTRIC COMPANY AND FROM THE ESTATE OF MR. JOHN R. JENKINS, CLASSIC COLLECTOR CARS, LARGE QUANTITY OF CLASSIC CAR AUTOMOTIVE PARTS AND ACCESSORIES, ANTIQUES AND COLLECTIBLES, MISCELLANEOUS ITEMS

Modification: D:\20150109155357-05\001\ Producer: Adobe PDF Library 11.0 Creation Date: D:\20150109155357-05\001\ WD 100 \rsi\luc\ C:\175015 X:\175015 Y:\175015 Z:\175015 [ TRAP ABO:100 Scaling Percent 0.375  
\\vnpres-rp\01\Jobs\112200 catalog.pdf Page 8 Creator: Adobe InDesign CC 2014 (Macintosh) [ TRAP ABO:100 Scaling Percent 0.375  
2400.0 dpi (Screened Data File POS, Right-Reading, Color-Seqs, Std-CVF Simulated Spot Colors)  
PS Version: 3015.102 HQN Version 9.0 Revision 2 RSL, Ripped on Friday, January 09, 2015 3:58:27 PM  
Can Register Yellow Black  
ID: Kelleve