

ANNUAL SPRING CONTRACTORS AUCTION

LISTING CATALOG



FEATURING ABSOLUTE PACKAGES OF EQUIPMENT & TRUCKS FROM

ATCO EQUIPMENT SALES & RENTALS • BARNHILL CONTRACTING COMPANY • CONDER CONSTRUCTION INC • DARRELL HARP ENTERPRISES • D & D VETTE SHOP • DRAUGHON CATTLE COMPANY • ES & J ENTERPRISES INC • EASY-KLEEN PRESSURE SYSTEMS • GREGORY POOLE EQUIPMENT CAT • HILL GRADING AND LANDSCAPING COMPANY • K.L. SHANE COMPANY • LAWLER CONTRACTING COMPANY • LOCKLEAR BORING INC • MID-STATE EQUIPMENT SALES AND RENTALS • SMITH AND BARNES CONSTRUCTION COMPANY • TAL INTERNATIONAL • TRI-CITY CONTRACTORS INC and other owners

FRIDAY, APRIL 11, 2014
8:00 AM START

SALE SITE ADDRESS
4070 NC HWY 211 EAST, LUMBERTON, NORTH CAROLINA 28358

Auction Conducted By:
Lloyd Meekins & Sons Auction Company
Tel: 910.739.0547 Fax: 910.738.1389
Email: info@meekinsauction.com

AUCTION TERMS OF BIDDING AND SALE

MEEKINS AUCTION COMPANY

Meeting the needs and expectations of its customers for over 50 Years



PAYMENT TERMS

All payments are made in US funds. Methods of payment are cash, wire transfer, certified check, or company/personal check accompanied with bank letter guaranteeing payment.

- **ADMINISTRATIVE FEE:** All purchased lots will be subject to an administrative fee of ten percent. Online Bidders will be charged an administrative fee of twelve percent on all online purchases.
- **SALES TAX:** All items are subject to state and local tax law. The North Carolina Sales Tax (Robeson County) is **7.00%** and applies to all sales, unless proper tax exemption forms are completed.
- **SALES TAX EXEMPTIONS:** Buyers qualifying for sales tax exemption must present a copy of their sales tax I.D. numbers and complete a NC certificate of exemption (E595-E), or have a current exemption form on file, in order to be exempted from sales tax on applicable purchases.
- **EXPORT SALES TAX EXEMPTIONS:** Buyers purchasing for export must complete/execute a NC affidavit of export (E599-C) for sales tax exemption. Items will not be released until this required document is received.

EVERY ITEM IS SOLD AS-IS, WHERE IS. ALL SALES ARE FINAL

NOTICE: All bidders attending/participating in this auction agree that they have read and have full knowledge of these terms and agree to be bound thereby.

***No Guarantees or warranties expressed or implied. This catalog is only a guide.
Please inspect equipment.***

Based on information gathered from consignors and other reliable sources, we believe information to be correct and valid, but the accuracy is not guaranteed or warranted by Meekins Auction Company. Please inspect equipment.

***Meekins Auction Company does not guarantee year models, descriptions, serial numbers or VIN numbers.
Please inspect equipment.***

ADDITIONAL TERMS:

- **In the event of when (2) ring men claim they have the winning bid,** and the auctioneer has declared the item sold, the Auctioneer reserves the right to re-open the bidding to all bidders. Auctioneer reserves the right to choose the increment of the bidding and reject any bids if he feels it is in the best interest of the Seller.
- If a bid is made **“while the hammer is falling”** in acceptance of a prior bid, the auctioneer may reopen the bidding or declare the goods sold under the bid on which the hammer was falling.
- A **“Late Bid”** is not an accepted bid once the auctioneer has declared the item sold.

ANNUAL SPRING CONTRACTORS AUCTION – APRIL 11 2014



AUCTION TERMS OF BIDDING AND SALE

MEEKINS AUCTION COMPANY

Meeting the needs and expectations of its customers for over 50 Years



PERSONAL INJURY AND DAMAGE

Bidder acknowledges responsibility for any personal injury or property damage caused by the bidder, or his agent, and further agrees to hold Meekins Auction Company harmless from any personal injury to himself or his agents and any property damage incurred on auction premises. **All children under the age of 18 are not allowed on sale site.** I release Meekins Auction Company and the Seller from any and all liability connected with the removal and transportation of my purchases and any and all future uses for the equipment purchased here today.

VEHICLE TITLE INFORMATION AND REQUIREMENTS

- **No titles will be given out on the day of the auction!**
- All title-item purchases will be charged a **\$25 TITLE PROCESSING FEE.**
- Auction Company shall provide a title and paperwork to be able to register motor vehicles and /or trailers.
- **Please check your invoice name for accuracy.** (Names on invoices cannot be changed after sale day.)
- All titles will be mailed out by certified mail within (15) business days after payment has been received.

AUCTION COMPANY INFORMATION

Lloyd Meekins & Sons Auction Company - NC Firm License #858

Office Address: 4070 NC Hwy 211 East, Lumberton, NC 28358

Office Phone: 910.739.0547 • **Office Fax:** 910.738.1389

Email: info@meekinsauction.com – **Web:** www.meekinsauction.com

Auctioneers:

Lloyd Mickey Meekins, Jr. #228, Lloyd Trey Meekins, III #8137

Sales Representatives and Sale Site Managers:

Trey Meekins, 910.258.4383 • Chris Cea, 910.633.8244 • EB Webb, 252.245.1405

Sale Site Manager: Avery Brewer

Agency: The auctioneer is acting as agent only and is not responsible for the acts of its principals or consignors.

- **Note:** The Auctioneer may add other terms and conditions of sale, such as additional terms, change in item description, etc. to be announced prior or during the auction.

ANNUAL SPRING CONTRACTORS AUCTION – APRIL II 2014



AUCTION TERMS OF BIDDING AND SALE

MEEKINS AUCTION COMPANY

Meeting the needs and expectations of its customers for over 50 Years



EQUIPMENT REMOVAL INFORMATION

All equipment must be removed from sale site by **THURSDAY, MAY 8, 2014.**

Loading docks are available. Equipment not removed by designated date, buyer may be charged storage fees.

Removal of equipment and insurance is the buyers' responsibility.

Auction Day Equipment Loading Procedure Important Notice

- To insure the safety of our valued customers and employees, equipment may not be loaded or driven out until the conclusion of the auction or until auction management determines it is safe to do so.
- Meekins Auction Company employees will not load equipment into containers, dismantle machines, arrange for 3rd parties to assist in loading equipment, and will not load or operate loaders after dusk.
- **Office Yard Loading Hours:** Monday - Friday, 8:00 am – 12:00 Noon, 1:00 pm – 4:30 pm, Closed Weekends
- For equipment release, invoice must be paid in full. An equipment release form can be obtained from the main office for removal.

EQUIPMENT HAULING COMPANIES

- **Yarborough Transport Company:** 800.334.0160
- **Rocky Top Trucking Inc:** 800.243.3403
- **Landstar (TLC) Hauling Company:** 888.558.0008 (Nationwide Availability)
- **Triple A Transport (Conex/Storage Container Removal):** 910.483.8818
- **Global Relogistics Inc (International):** 877.945.2189 Ext #314
- **Mangum's Heavy Equip Hauling:** 800.869.8973
- **Joshua Transport:** 360.690.8288
- **Bent Creek Transport:** 919.427.7648

ANNUAL SPRING CONTRACTORS AUCTION – APRIL 11 2014



ANNUAL SPRING CONTRACTORS AUCTION
FRIDAY, APRIL 11 2014 • LUMBERTON, NC



**Lloyd
Meekins
& Sons
Auction Co.**
Auction Co.
of 2012

MEEKINS AUCTION COMPANY

Meeting the needs and expectations of its customers for over 50 Years

YEAR OF MANUFACTURE

MOTOR VEHICLES INFO

If a Motor Vehicle was built in the year 1980 or later and has a 17-digit vehicle identification number; the year of manufacture is identified by the 10th digit from the left, using the chart provided below.

A	1980	N	1992	4	2004
B	1981	P	1993	5	2005
C	1982	R	1994	6	2006
D	1983	S	1995	7	2007
E	1984	T	1996	8	2008
F	1985	V	1997	9	2009
G	1986	W	1998	A	2010
H	1987	X	1999	B	2011
J	1988	Y	2000	C	2012
K	1989	1	2001	D	2013
L	1990	2	2002	E	2014
M	1991	3	2003	F	2015

4070 NC Hwy 211 E
LUMBERTON, NC 28358
(910) 739-0547

Printed:04/10/2014 09:21

www.meekinsauction.com

Catalog for Auction:ANNUAL SPRING CONTRACTORS AUCTION

This catalog is meant merely as a guide. The Auctioneers do not warrant the accuracy, genuineness, authenticity, description, weight, count or measure of any of the lots specified herein.

Lot Num	Description	Lot Num	Description
1	2006 POLARIS RANGER UTILITY CART, sn:4XARB50A36D738908, equipped w/ Roll Bar, gas engine, 4x2, brush guard, light package, manual dump cargo body, tow hitch, AT25 x 11-12 tires, meter reading: 1,457 hrs	9	2010 CLUB CAR PRECEDENT GOLF CART, sn:PH1049-154687, equipped / Canopy, windshield, electric powered, aluminum frame, battery charger
2	2007 KAWASAKI 3010 MULE (4X4) UTILITY CART, sn:1K1AFCJ117B511513, equipped w/ Roll Cage, gas engine, crew cab, differential lock, brush guard, light package, manual dump cargo body, tow hitch, meter reading: 2,239 hrs	10	2010 CLUB CAR PRECEDENT GOLF CART, sn:PH1049-155052, equipped / Canopy, windshield, electric powered, aluminum frame, battery charger
3	2005 KAWASAKI 3010 MULE UTILITY CART, sn:JK1AFC61858511092, equipped w/ Rops Canopy, gas engine, work light package, brush guard, manual dump cargo body, meter reading: 1,619 hrs	11	2008 CLUB CAR PRECEDENT GOLF CART, sn:PQ0841-970805, equipped / Canopy, windshield, electric powered, aluminum frame, battery charger
4	1998 CLUB CAR DS UTILITY CART, sn:A9813-654370, equipped w/ Canopy, electric powered, light package, aluminum cargo body, battery charger	12	2008 CLUB CAR PRECEDENT GOLF CART, sn:PQ0841-970824, equipped / Canopy, windshield, electric powered, aluminum frame, battery charger
5	2010 CLUB CAR PRECEDENT GOLF CART, sn:PQ1013-086976, equipped / Canopy, windshield, electric powered, aluminum frame, backseat, battery charger	13	E-Z-GO GOLF CART, sn:938871, equipped w/ Canopy, windshield, electric powered, backseat, battery charger
6	2010 CLUB CAR PRECEDENT GOLF CART, sn:PQ1013-086945, equipped / Canopy, windshield, electric powered, aluminum frame, battery charger	14	2000 JACOBSEN LF3400 COMMERCIAL REEL LAWN MOWER, sn:678682276, equipped w/ open station, Kubota V1305 4 cylinder engine, hydrostatic transmission, flash attach series, 5 gang, meter reading: 2,346 hrs
7	2010 CLUB CAR PRECEDENT GOLF CART, sn:PQ1013-086914, equipped / Canopy, windshield, electric powered, aluminum frame, battery charger	15	2001 JACOBSEN LF3400 COMMERCIAL REEL LAWN MOWER, sn:678683058, equipped w/ Rops Canopy, Kubota V1305 4 cylinder engine, hydrostatic transmission, flash attach series, 5 gang, work light package, meter reading: 4,542 hrs
8	2010 CLUB CAR PRECEDENT GOLF CART, sn:PQ1013-086911, equipped / Canopy, windshield, electric powered, aluminum frame, battery charger	16	2000 TORO REELMASTER 5200-D COMMERCIAL REEL LAWN MOWER, sn:20000424, equipped w/ open station, Kubota D1105 3 cylinder engine, hydrostatic transmission, work light package, 5 gang

THANK YOU FOR ATTENDING OUR AUCTIONS

4070 NC Hwy 211 E
LUMBERTON, NC 28358

Printed:04/10/2014 09:21

(910) 739-0547

www.meekinsauction.com

Catalog for Auction:ANNUAL SPRING CONTRACTORS AUCTION

Lot Num	Description	Lot Num	Description
17	2006 JOHN DEERE 2500E COMMERCIAL LAWN MOWER, sn:TC250EG020017, equipped w/ Roll Bar, Kawasaki FD620D V-Twin engine, hydrostatic transmission, work light package, (3) 22 inch reel cutting heads, meter reading: 2,785 hrs	26	1999 CAT 226 SKID STEER LOADER, SN:5FZ00408, equipped w/ Rops Canopy, Cat 3034 engine, work light package, auxiliary hydraulics, gp loader bucket, 10-16.5 tires, meter reading: 2,694 hrs
18	JOHN DEERE L120 AUTOMATIC SERIES LAWN MOWER, sn:GXL120A055061, equipped w/ Briggs & Stratton 20HP V-Twin engine, 48 inch deck, meter reading: 413 hrs	27	1998 NEW HOLLAND LX865 SKID STEER LOADER, sn:99821, equipped w/ Rops Canopy, turbo engine, work light package, super boom series, auxiliary hydraulics, loader bucket, 12-16.5 tires, meter reading: 2,734 hrs
19	LAWN TRACTOR RIDING MOWER, equipped w/ 22HP engine, hydro automatic, 52 inch deck	28	2004 CAT 420D (4X4) LOADER BACKHOE, sn:CAT0420DHFDP15325, equipped w/ Rops Canopy, Cat 3054 turbo engine, power shuttle transmission, work light package, 4-n-1 loader bucket, standard stick, 12 inch hoe bucket, meter reading: 10,344 hrs
20	YARD MACHINES 14.5HP LT RIDING LAWN MOWER, equipped w/ Briggs & Stratton 14.5HP engine, shift-on-the-go transmission, 42 inch deck	29	1999 CAT 416C (4X4) LOADER BACKHOE, sn:5YN15570, equipped w/ Rops Canopy, Cat 3054 turbo engine, work light package, 4-n-1 loader bucket, standard stick, 18 inch hoe bucket, meter reading: 9,438 hrs
21	INTERNATIONAL CUB CADET 107 UTILITY TRACTOR, equipped w/ Kohler engine, hydrostatic transmission, 23 x 8.50-12 rear turf tires	30	2001 JOHN DEERE 310SE (4X4) LOADER BACKHOE, sn:T0310SE887049, equipped w/ A/C Cab, turbo engine, work light package, gp loader bucket, standard stick, 12 inch hoe bucket
22	2008 MILLER MB16 SCOOT-CRETE CONCRETE BUGGY, sn:G16671, equipped w/ Honda GX390 engine, ride-on platform, 16 cu ft capacity, 2500LB max. net payload rating	31	1999 NEW HOLLAND 555E (4X4) LOADER BACKHOE, sn:031018543, equipped w/ Rops Canopy, work light package, gp loader bucket, standard stick, 12 inch hoe bucket, meter reading: 4,064 hrs
23	2011 JOHN DEERE 329D SKID STEER LOADER, sn:1T0329DJABD211391, equipped w/ Rops Canopy, Power Tech 5030HT turbo engine, two speed auxiliary hydraulics, rubber tracks, work light package, power quick tach system, 84 inch 4-n-1 loader bucket, meter reading: 1,547 hrs	32	1999 JCB 214 (4X4) LOADER BACKHOE, sn:SLP214TCXE0481259, equipped w/ Rops Canopy, Perkins engine, work light package, gp loader bucket, standard stick, 24 inch hoe bucket, meter reading: 2,351 hrs
24	2005 CAT 257B SKID STEER LOADER, sn:CAT0257BKSLK02160, equipped w/ Rops Canopy, turbo engine, work light package, rubber tracks, auxiliary hydraulics, gp loader bucket, meter reading: 4,203 hrs	33	1993 JCB 214 (4X4) LOADER BACKHOE, sn:21400CPE408871, equipped w/ Rops Canopy, Perkins engine, work light package, 4-n-1 loader bucket, extend-a-hoe, 24 inch hoe bucket, meter reading: 3,631 hrs
25	2000 CAT 236 SKID STEER LOADER, sn:4YZ02217, equipped w/ Rops Canopy, turbo engine, work light package, auxiliary hydraulics, gp loader bucket, 12-16.5 tires, meter reading: 4,063 hrs		

THANK YOU FOR ATTENDING OUR AUCTIONS

4070 NC Hwy 211 E
LUMBERTON, NC 28358
(910) 739-0547

Printed:04/10/2014 09:21

www.meekinsauction.com

Catalog for Auction:ANNUAL SPRING CONTRACTORS AUCTION

Lot Num	Description	Lot Num	Description
34	2000 NEW HOLLAND 555E LOADER BACKHOE, sn:031027702, equipped w/ Rops Canopy, work light package, 2wd, gp loader bucket, standard stick, 36 inch hoe bucket, meter reading: 2,879 hrs	42	2002 CAT 525B FORESTRY GRAPPLE SKIDDER, sn:CAT0525BA3KZ00645, equipped w/ Enclosed Cab, Cat 3126 engine, 5 speed countershaft transmission, front cage cab protection, work light package, hydraulic dozer blade, C502 winch, single function arch, Firestone forestry special tires, meter reading: 11,819 hrs
35	FORD 655A LOADER BACKHOE, sn:C779334, equipped w/ Rops Canopy, work light package, 2wd, gp loader bucket, standard stick, hoe bucket, meter reading: 4,010 hrs	43	1999 TIMBERJACK 460C GRAPPLE SKIDDER, sn:10EB1020, equipped w/ forestry rops package, Cummins 6BT engine power, hydraulic dozer blade, Esco single arch grapple, 30.5-32 forestry special tires, meter reading: 10,124 hrs
36	FORD 555C LOADER BACKHOE, sn:A415126, equipped w/ Rops Canopy, work light package, gp loader bucket, standard stick, hoe bucket	44	2004 CAT 320CLU FORESTRY SHINN CUTTER SYSTEM, sn:CAT0320CAPAC00418, equipped w/ A/C Cab, forestry rops package, work light package, high flow hydraulic system, Shinn Cutter excavator powered cutter system, self contained unit, 36 inch cutting head, push bar, auto lube system, meter reading: 5,198 hrs
37	2005 TELEDYNE D50 PIGGYBACK MAST FORKLIFT, sn:49190897, equipped w/ Rops Canopy, Deutz engine, 5,000LB lift capacity, 2 stage mast, side shift, forks, 31 x 15.50-15NHS all terrain tires, meter reading: 1,351 hrs	45	1997 CAT 330BL HYDRAULIC EXCAVATOR, sn:6DR01566, equipped w/ A/C Cab, Cat 3306 engine, work light package, 33.5 inch pads, 54 inch bucket, meter reading: 13,387 hrs
38	DATSUN FG107 FORKLIFT TRUCK, sn:06412, equipped w/ Rops Canopy, Nissan H30 gas engine, 7600LB lift capability, 162 inch max fork height, 2 stage mast, rough terrain tires, meter reading: 2,819 hrs	46	1996 CAT 330L HYDRAULIC EXCAVATOR, sn:5YM01844, equipped w/ Enclosed Cab, Cat 3306 engine, work light package, catwalk, 33.5 inch pads, Balderson 56 inch bucket
39	2003 LULL 644E-42 TELESCOPIC FORKLIFT, sn:19838, equipped w/ Rops Canopy, Cummins 3.9L engine, 4x4x4, 6,000LB lifting capability, 42 ft reach, hydraulic frame tilt, forks, 13.00-24TG tires	47	2004 CAT 312CL HYDRAULIC EXCAVATOR, sn:CAT0312CLCBA01897, equipped w/ A/C Cab, Cat 3064T engine, work light package, 28 inch pads, plumbed auxiliary hydraulics, Cat hydraulic thumb attachment, Cat 36 inch bucket, meter reading: 4,578 hrs
40	2004 GEHL DL-10H TELESCOPIC FORKLIFT, sn:10H55JV0640516, equipped w/ Rops Canopy, John Deere 4.5L engine, 4x4x4, 10,000LB lift capability, 55 ft reach, hydraulic frame tilt, work light package, auxiliary hydraulics, two hydraulic stabilizers, forks, 14.00-24 tires, meter reading: 2,463 hrs		
41	2001 TEREX SS842 TELESCOPIC FORKLIFT, sn:013642, equipped w/ Rops Canopy, John Deere 4.5L engine, 4x4x4, 8,000LB lift capability, 42 ft reach height, hydraulic frame tilt, forks, 13.00-24TG tires, meter reading: 3,337 hrs		

THANK YOU FOR ATTENDING OUR AUCTIONS

4070 NC Hwy 211 E
LUMBERTON, NC 28358
(910) 739-0547

Printed:04/10/2014 09:21

www.meekinsauction.com

Catalog for Auction:ANNUAL SPRING CONTRACTORS AUCTION

Lot Num	Description	Lot Num	Description
48	2007 VOLVO EC330BLC HYDRAULIC EXCAVATOR, sn:EC330V80218, equipped w/ A/C Cab, Volvo 12.0L (265HP) engine, work light package, 31.5 inch pads, plumbed auxiliary hydraulics, Geith 54 inch bucket, Geith hydraulic thumb attachment, meter reading: 6,984 hrs	55	1998 CASE 821B WHEEL LOADER, sn:JEE0055846, equipped w/ A/C Cab, Case 6T-830 (198HP) engine, power shift, Viking load weigh scale system, work light package, auto lube system, 4.00 yd loader bucket, 23.5 R 25 tires, meter reading: 2,784 hrs
49	1999 CAT 315BLC HYDRAULIC EXCAVATOR, sn:3AW01869, equipped w/ Enclosed Cab, front cage cab protection, Cat 3054 engine, work light package, 27.5 inch pads, Cat 36 inch bucket, manual thumb, meter reading: 8,603 hrs	56	1995 CASE 821B WHEEL LOADER, sn:JEE0042102, equipped w/ A/C Cab, 6T-830 Case engine, work light package, 3.5 yd loader bucket, 23.5-25 tires, meter reading: 10,846 hrs
50	1997 CAT 313BSR HYDRAULIC EXCAVATOR, sn:9PR00527, equipped w/ A/C Cab, Mitsubishi engine, work light package, reduced tail swing, steel tracks, 20 inch pads, backfill dozer blade, plumbed auxiliary hydraulics, Cat 32 inch bucket, meter reading: 7,106 hrs	57	1995 KOMJATSU WA250-1 WHEEL LOADER, sn:A65507, equipped w/ Enclosed Cab, Komatsu 6 cyl engine, power shift transmission, work light package, loader bucket, 20.5 R 25 tires, meter reading: 9,436 hrs
51	1998 CAT 307 HYDRAULIC EXCAVATOR, sn:2PM00776, equipped w/ Enclosed Cab, Mitsubishi engine, work light package, 23.5 inch pads, backfill dozer blade, 48 inch ditch cleaning bucket, meter reading: 6,324 hrs	58	1978 CAT 950 WHEEL LOADER, sn:81J06130, equipped w/ Enclosed Cab, Cat D330T engine power, power shift transmission, articulating steering, work light package, loader bucket, 20.5-25 tires
52	2007 CAT 305CCR HYDRAULIC EXCAVATOR, sn:CAT0305CVHWJ01305, equipped w/ A/C Cab, Mitsubishi engine, reduced tail swing, rubber tracks, backfill dozer blade, work light package, plumbed auxiliary hydraulics, Cat hydraulic thumb, quick coupler, Cat 20 inch bucket, meter reading: 1,944 hrs	59	1986 CAT IT28 WHEEL LOADER, sn:2KC01127, equipped w/ Enclosed Cab, Cat 3204 engine, power shift transmission, work light package, hydraulic quick coupler, loader bucket, 20.5 R 25 tires, meter reading: 11,509 hrs
53	1992 JOHN DEERE 590DLC HYDRAULIC EXCAVATOR, sn:1696	60	CASE W14 WHEEL LOADER, sn:9147053, equipped w/ Enclosed Cab, work light package, 4-n-1 loader bucket, 15.5-25 tires, meter reading: 3,164 hrs
54	2011 CASE 521E WHEEL LOADER, sn:N9F208080, equipped w/ A/C Cab, auto shift transmission, work light package, third valve hydraulics, 1.90 cu yd loader bucket, 17.5-25 tires, meter reading: 13,578 hrs	61	MICHIGAN-CLARK 55B WHEEL LOADER, sn:411D311CAC, equipped w/ Rops Canopy, Detroit Diesel engine power, 50 inch pallet forks, 17.5-25 tires
		62	2004 VOLVO A35D ARTICULATED DUMP TRUCK, sn:A35DV71106, equipped w/ A/C Cab, autoshift transmission, work light package, 6WD, 35 Ton hauling capability, 26.5 R 25 tires, meter reading: 16,664 hrs

THANK YOU FOR ATTENDING OUR AUCTIONS

4070 NC Hwy 211 E
LUMBERTON, NC 28358
(910) 739-0547

Printed:04/10/2014 09:21

www.meekinsauction.com

Catalog for Auction:ANNUAL SPRING CONTRACTORS AUCTION

Lot Num	Description	Lot Num	Description
64	1990 TEREX 2566 ARTICULATED DUMP TRUCK, sn:A4211008, equipped w/ Enclosed Cab, Deutz engine power, power shift transmission, 6WD, 25 Ton hauling capability, 20.5 R 25 tires, meter reading: 17,862 hrs	72	2006 CAT 939C CRAWLER LOADER, sn:CAT0939CA6DS01845, equipped w/ A/C Cab, Cat 3046T engine, hydrostatic transmission, work light package, 16 inch pads, 4-n-1 loader bucket, meter reading: 1,889 hrs
65	JOHN DEERE 762A MOTOR SCRAPER, sn:JD762A003881T, equipped w/ Rops Canopy, 6 cyl turbocharged engine, power shift transmission, self elevating, 11 cu yd haul capability, 23.5-25 tires	73	2005 GMC C7500 ASPHALT DISTRIBUTOR TRUCK, equipped w/ Cat C7 (210HP) engine, Spicer 7 speed transmission, cruise, air brakes, differential lock, work light package, 12,000LB front axle, 21,000LB rear axle, 2005 E.D. Etnyre Black-Topper Centennial asphalt distributor body, sn:S3997, 2000 gallon tank capacity, hydrostatic, rear spray bar and spray wand, odometer reading: 112,732 miles , sn:1GDM7C1CX5F520889
66	1999 CAT D6M LGP CRAWLER DOZER, sn:4JN01714, equipped w/ Rops Canopy, Cat 3116 engine, power shift transmission with finger-tip controls, 34 inch pads, 6 way dozer blade, draw bar, meter reading: 12,057 hrs		
67	1977 CAT D6D CRAWLER DOZER, sn:04X2204, equipped w/ Rops Canopy, Cat 3306 engine, power shift transmission, 24 inch pads, S/U dozer blade, draw bar, meter reading: 10,237 hrs	74	2002 CAT AP-1055B CRAWLER (RUBBER TRACK) ASPHALT PAVER, sn:CATAP105KABB00464, equipped w/ Cat 3116 (174HP) engine, hydrostatic transmission, 215 cu ft hopper capacity, work light package, truck hitch, plumbed for Topcon grade control system, Carlson EZIV-10 electric heated screed, sn:0254B3A6, 10 ft to 20 ft paving width capability, meter reading: 4,798 hrs
68	1973 CAT D6C CRAWLER DOZER, sn:10K08952, equipped w/ Rops Canopy, Cat 3306 engine, power shift transmission, 24 inch pads, S/U dozer blade		
69	1988 CAT D3C LGP CRAWLER DOZER, sn:1PJ00162, equipped w/ Rops Canopy, Cat 3204 engine, power shift transmission, 25 inch pads, 6 way dozer blade, meter reading: 5,458 hrs	75	2003 BLAW-KNOX PF3200 PNEUMATIC ASPHALT PAVER, sn:32003547, equipped w/ Cummins 5.9L engine, hydrostatic wheel drive, positract, front wheel assist, dual operator consoles, work light package, pivot and truck hitch controls, 225 cu ft hopper capacity, plumbed for Topcon grade controls, Carlson EZIV-10 electric heated screed, sn:03691203, 10 ft to 20 ft paving width capability, meter reading: 9,349 hrs
70	2007 CAT 953D CRAWLER LOADER, sn:CAT0953DCLBP00252, equipped w/ A/C Cab, Cat C6.6 Acert engine, hydrostatic transmission, work light package, 19 inch pads, auxiliary hydraulics, 1.75 yd loader bucket, meter reading: 2,413 hrs	76	2004 LEEBOY L8500T LOW DECK CONVEYOR ASPHALT PAVER, sn:41788LD, equipped w/ Kubota V3300 engine, steel track drive, crown/grade/slope controls, 7.5 ton hopper capacity, Legend screed system, 8 ft to 15 ft paving width capability, meter reading: 4,869 hrs
71	1998 CAT 953C CRAWLER LOADER, sn:2ZN01088, equipped w/ A/C Cab, Cat 3116 engine, hydrostatic transmission, work light package, 19.5 inch pads, loader bucket, meter reading 10,275 hrs		

THANK YOU FOR ATTENDING OUR AUCTIONS

4070 NC Hwy 211 E
LUMBERTON, NC 28358

(910) 739-0547

www.meekinsauction.com

Printed:04/10/2014 09:21

Catalog for Auction:ANNUAL SPRING CONTRACTORS AUCTION

Lot Num	Description	Lot Num	Description
77	CASE 460 TRENCHER, sn:JAF0163909, equipped w/ Roll Bar, Kubota engine power, 4x4x4, front weights package, backfill dozer blade, 7 ft trench bar, 29 x 12.50-15 tires	85	2010 KENWORTH T800 (T/A) DAY CAB TRUCK TRACTOR, equipped w/ Cummins ISM (370HP) engine, Eaton Fuller 10 speed transmission, cruise, fifth wheel slide, differential lock, 12,000LB front axle, 38,000LB rear axles, 3.70 axle ratio, air ride suspension, Alcoa rims, odometer reading: 588,279 miles , sn:1XKDD09X3AJ276176
78	2003 DITCH WITCH 3700DD TRENCHER, sn:3X0639, equipped w/ Roll Bar, Deutz engine power, 4x4, backfill dozer blade, 7 ft trench bar, 26 x 12-12NHS tires, meter reading: 1,017 hrs	86	1985 KENWORTH W900B (T/A) DAY CAB TRUCK TRACTOR, equipped w/ Cummins NTC-400HP engine power, Eaton Fuller 15 speed with low side transmission, cruise, engine brake, locking differential, sliding fifth wheel, work light package, 216 wheel base, dual exhaust stacks, 8 bag air ride suspension system, 16,000LB front axle, 44,000LB rear axles, aluminum steel rims, 11R 24.5 tires, hydraulic wet line kit, *note: 163,977 miles on rebuilt engine installed in June 2012 , sn:2XKWD29XXFM914704
79	1999 DITCH WITCH 3700DD TRENCHER, sn:3S1340, equipped w/ Roll Bar, Deutz engine power, 4x4x4, backfill dozer blade, 7 ft trench bar, 26 x 12.00-12NHS tires, meter reading: 1,019 hrs		
80	VERMEER 447 TRENCHER, equipped w/ Rops Canopy, 4 cyl gas engine, 4x4, articulating frame, 7 ft trench bar, 31 x 15.50-15 NHS tires		
81	2002 VOLVO G80 MOTOR GRADER, sn:26-201075, equipped w/ Rops Canopy, Cummins 3.9L (80HP) engine, work light package, articulating frame, 10 ft board, scarifier, 15-19.5NHS tires, meter reading: 2,107 hrs	87	2005 MACK VISION CXN613 (T/A) SLEEPER TRUCK TRACTOR, sn:1M1AK06Y95N004814, equipped w/ AC-380HP Mack engine, Maxitorque 10 speed transmission, cruise, fifth wheel slide, suspension dump, inter-axle lock, 50 inch flat top sleeper cab, 224 wheel base, 12,000LB front axle, 40,000LB rear axles, air ride suspension, Alcoa rims, odometer reading: 539,676 miles , sn:1M1AK06Y95N004814
82	1993 CAT 120G MOTOR GRADER, sn:87V09686, equipped w/ A/C Cab, Cat 3304 engine, work light package, articulating frame, work light package, 12 ft board, scarifier, 14.00-24TG tires, meter reading: 15,134 hrs	88	2007 FREIGHTLINER COLUMBIA (T/A) SLEEPER TRUCK TRACTOR, equipped w/ Mercedes-Benz 0M460 (450HP) engine, 10 speed transmission, cruise, engine brake, fifth wheel slide, inter-axle differential lock, suspension dump, 60 inch mid roof sleeper cab, 220 wheel base, 12,000LB front axle, 40,000LB rear axles, air ride suspension, Alcoa rims, odometer reading: 653,917 miles , sn:1FUJF0CV07DZ34553
83	1998 CHAMPION 720A VHP SERIES V MOTOR GRADER, sn:028271, equipped w/ A/C Cab, Cummins 8.3L (205HP) engine, power shift transmission, work light package, articulating frame, 12 ft board, scarifier, 14.00 R 24TG tires, meter reading: 10,079 hrs		
84	GALION T500 MOTOR GRADER, sn:CC03669, equipped w/ Enclosed Cab, Cummins engine power, 12 ft board, 14.00-24 tires		

THANK YOU FOR ATTENDING OUR AUCTIONS

4070 NC Hwy 211 E
LUMBERTON, NC 28358
(910) 739-0547

Printed:04/10/2014 09:21

www.meekinsauction.com

Catalog for Auction:ANNUAL SPRING CONTRACTORS AUCTION

Lot Num	Description	Lot Num	Description
89	2004 INTERNATIONAL 9200I (T/A) SLEEPER TRUCK TRACTOR, equipped w/ Cummins ISX-435HP engine, Eaton Fuller 10 speed transmission, cruise, 3 stage engine brake, fifth wheel slide, suspension dump, power divider lock, 48 inch sleeper cab, 217 wheel base, air ride suspension, 12,000LB front axle, 40,000LB rear axles, odometer reading: 769,187 miles , sn:3HSCEAPR44N094669	93	2005 STERLING LT9513 - EFFER 340.01/4S (TRI-AXLE) HYDRAULIC CRANE TRUCK, equipped w/ Mercedes-Benz 0M460LA (450HP) engine, Eaton Fuller 8LL transmission, cruise, engine brake, axle and wheel lock, 22,000LB front axle, 46,000LB rear axles, 11,000LB air lift 3rd pusher axle, Tuff-Trac heavy duty spring suspension, double frame body, 2004 Effer 340.01/4S Articulating rear mount crane, sn:110245, 227,980 FT/LBS maximum capacity, rotating head, Lincoln auto lube system, (2) hydraulic outriggers, Smith Truck Crane 22 ft flatbed body , odometer reading: 153,359 miles , sn:2FZHAZCV95AU29454
90	2007 STERLING AT9513 (S/A) DAY CAB TRUCK TRACTOR, equipped w/ Mercedes-Benz 0M460 (450HP) engine, Eaton Fuller 10 speed transmission, cruise, engine brake, suspension dump, 168 wheel base, 12,000LB front axle, 23,000LB rear axle, air ride suspension, odometer reading: 510,003 miles , sn:2FWBA3CVX7AY12323	94	1995 INTERNATIONAL 4700 - SIMON-RO TC2863 14 TON HYDRAULIC CRANE TRUCK, equipped w/ T444E engine power, Spicer Double D 5x2 transmission, cruise, 236 wheel base, Simon-Ro TC2863 crane, sn:4591194937, 14 ton lifting capability, 103 ft boom and jib, 16 ft flatbed body, (4) hydraulic outriggers, hook and blocks, odometer reading: 215,952 miles , sn:1HTSCABP4SH621037
91	2001 FREIGHTLINER COLUMBIA (S/A) DAY CAB TRUCK TRACTOR, equipped w/ Detroit Diesel Series 60 (360HP) engine, Eaton Fuller 10 speed transmission, cruise, suspension dump, 12,000LB front axle, 21,000LB rear axle, air ride suspension, hydraulic wet line kit, odometer reading: 489,143 miles , sn:1FUBA5CG61LJ98183	95	1981 FORD F800 NATIONAL CRANE BOOM TRUCK, sn:1FDPK84N7BVJ29252, equipped w/ Detroit Diesel 8.2L engine, 5 x 2 manual transmission, 9,000LB front axle, 18,500LB rear axle, 16 ft flatbed body, National Crane 4T55 Series 4 hydraulic crane, sn:14365, 8 Ton lifting capability, 60 ft boom, four outriggers, hook and block
92	2002 STERLING LT9513 NATIONAL 1400 SERIES 33 TON (TRI-AXLE) HYDRAULIC CRANE TRUCK, equipped w/ Cat C-12 (410HP) engine, Eaton Fuller 8LL transmission, cruise, ac/heat, full locking rears, axle and wheel lock, 20,000LB front axle, 40,000LB rear axles, Hendrickson walking beam suspension, Neway 12,000LB air lift drop axle, National 1400 Series 14110 Crane, sn: 34861, 33 Ton lifting capability, 110 ft main boom with 54 ft Jib, (5) outriggers, remote, enclosed cab with heat, odometer reading: 37,448 miles, meter reading: 2,375 hrs, *note: remote, control boxes, manuals located in office , sn:2FZHAZAS82AT95229	96	1998 FORD LOUISVILLE LT9513 (T/A) DUMP TRUCK, equipped w/ Cat 3306 engine power, Roadranger 10 speed transmission, axle and wheel lock, 216 wheel base, 13,220LB front axle, 40,000LB rear axles, Hendrickson spring suspension, OX 17 FT (16-19yd) steel dump body, Mountain tarp system, tow package, odometer reading: 345,229 miles , sn:1FDYS96TXWVA37020

THANK YOU FOR ATTENDING OUR AUCTIONS

4070 NC Hwy 211 E
LUMBERTON, NC 28358
(910) 739-0547

Printed:04/10/2014 09:21

www.meekinsauction.com

Catalog for Auction:ANNUAL SPRING CONTRACTORS AUCTION

Lot Num	Description	Lot Num	Description
97	1994 VOLVO/GM WCA (T/A) DUMP TRUCK, equipped w/ Cummins 330HP engine, Eaton Fuller 9 speed transmission, gw rating: 54,000LBS, 15 ft steel dump body, electric tarp system, spring suspension, odometer reading: 627,687 miles , sn:4V1VDBMF1RN669819	102	2001 INTERNATIONAL 4900 (S/A) DUMP TRUCK, equipped w/ DT466 engine, 7 speed transmission, cruise, 254 wheel base, 12,000LB front axle, 23,500LB rear axle, 16 ft dump body, removable side panels, electric tarp, tow package, odometer reading: 218,454 miles , sn:1HTSDAAN21H345744
98	2003 INTERNATIONAL 7300 CREW CAB DUMP TRUCK, equipped w/ DT466 engine, Allison automatic transmission, cruise, 203 wheel base, strobe light package, gv w rating: 33,000LBS, spring suspension, Godwin 12 ft flatbed dump body, glad hands, pintle hitch, odometer reading: 212,661 miles , sn:1HTWAAAN73J064674	103	1994 FORD F700 (S/A) DUMP TRUCK, equipped w/ Cummins 5.9L engine power, 5 speed transmission, 154 wheel base, 10,000LB front axle, 17,500LB rear axle, spring suspension, Godwin 9 ft dump body, tarp system, odometer reading: 267,309 miles , sn:1FDXK74CXRVA03778
99	1997 CHEVROLET C7500 CREW CAB DUMP TRUCK, equipped w/ Cat 3116 (215HP) engine, 6 speed transmission, strobe light package, gv w rating: 33,000LBS, spring suspension, Godwin 300U (4.5 YD) dump body, tarp system, tow package, odometer reading: 228,992 miles , sn:1GBM7H1J2VJ114171	104	2000 GMC C6500 DRY VAN TRUCK, equipped w/ 7.4L V8 gas engine, Allison automatic transmission, gv w rating: 25,950LBS, Morgan 25 ft van body, slide-out loading ramp, tow package, odometer reading: 124,328 miles , sn:1GDJ7H1DXYJ903953
100	1998 CHEVROLET C7500 CREW CAB DUMP TRUCK, equipped w/ Cat 3116 (215HP) engine, Allison automatic transmission, strobe light package, gv w rating: 33,000LBS, spring suspension, Godwin 12 ft flatbed dump body, manual tarp system, removable side panels, tow package, odometer reading: 189,273 miles , sn:1GBM7H1J9WJ102701	105	2002 GMC C7500 2,500 GALLON WATER TRUCK, equipped w/ Cat 3126 (210HP) engine, 6 speed transmission, cruise, 12,000LB front axle, 21,000LB rear axle, stainless steel water tank, Riverside pump, hoses and accessories, odometer reading: 10,156 miles , sn:1GDM7H1C02J514850
101	2001 CHEVROLET C7500 CREW CAB DUMP TRUCK, equipped w/ Cat 3126 (210HP) engine, Allison automatic transmission, strobe light package, gv w rating: 33,000LBS, spring suspension, Godwin 12 ft flatbed dump body, removable side panels, manual tarp, glad hands, pintle hitch, odometer reading: 146,619 miles , sn:1GBM7D1C01J510197	106	1987 ISUZU NPN7SF - WACH VACUUM EXCAVATION TRUCK, equipped w/ Isuzu LJ6 diesel engine, automatic transmission, gv w: 11,050LBS, 78 inch x 12 ft bed, spring suspension, 185/70R 15.5 tires, Solair 185 DUQ-JDD (125 psi) air compressor, Wach Vacuum Unit, Kohler 25HP engine, (3) ProGrade UWS Tool boxes, odometer reading: 214,259 miles *Note: New transmission installed Jan. 2014 , sn:JL7006154

THANK YOU FOR ATTENDING OUR AUCTIONS

4070 NC Hwy 211 E
LUMBERTON, NC 28358
(910) 739-0547

Printed:04/10/2014 09:21

www.meekinsauction.com

Catalog for Auction:ANNUAL SPRING CONTRACTORS AUCTION

Lot Num	Description	Lot Num	Description
107	_____ GMC TOPKICK FUEL & LUBE TRUCK, equipped w/ Cat 3116 engine power, automatic transmission, gvwr: 36,220LBS, air lift rear pusher axle, IMT fuel and lube body, (5) product tanks, work light package, IMT 1154 hydraulic air compressor, storage compartments, odometer reading: 238,387 miles , sn:1GDP7H1J5NJ525715	112	_____ 1997 FORD F-450 SUPERDUTY DUALY MECHANICS TRUCK, equipped w/ Powerstroke 7.3L turbo diesel engine, automatic transmission, 161 wheel base, Rawson Koenig service body, Stahl 6000LRX service crane, stabilizers, Columbian vise, odometer reading: 349,318 miles , sn:1FDLF47F6VEA95585
108	_____ 1992 FORD F700 SERVICE UTILITY TRUCK, equipped w/ V8 7.0L gas engine, 5x2 manual transmission, air brakes, pto cab controls, 153 wheel base, gvwr: 30,000LBS, 12 ft flatbed body, off road diesel fuel tank with meter register, hose, and nozzle, 800 gallon poly water tank, storage compartments, odometer reading: 116,506 miles , sn:1FDXF70J3NVA19212	113	_____ 1988 CHEVROLET KODIAK 60 MECHANICS TRUCK, equipped w/ V8 8.2L diesel engine, 5 speed transmission, work light package, gvwr: 25,080LBS, Stahl service body, Auto Crane 5005F service crane, storage racks, tow hitch, odometer reading: 297,015 miles , sn:1GBJ6D1FXJV106266
109	_____ 2003 INTERNATIONAL 4300 MECHANICS TRUCK, equipped w/ DT466 engine, Eaton Fuller 6 speed transmission, cruise, 390 wheel base, 12 ft service body, air compressor, Bobcat 225T 8000 watt generator welder, 8 inch jaw vise, Maintainer 3016-20 service crane, (2) outriggers, tow hitch, odometer reading: 156,246 miles , sn:1HTMMAAL23H582809	114	_____ 1998 INTERNATIONAL 4700 MECHANICS TRUCK, equipped w/ DT466 engine, 7 speed transmission, cruise, 8,000LB front axle, 17,500LB rear axle, 152 wheel base, Auto Crane 11 ft tool body, 11 R 22.5 tires, odometer reading: 416,351 miles , sn:1HTSCAAL3WH558713
110	_____ 2000 INTERNATIONAL 4700 MECHANICS TRUCK, equipped w/ DT466E engine, 7 speed transmission, cruise, work light package, 148 wheel base, gvwr: 32,000LBS, Adkins enclosed tool body, IMT DA435HA hydraulic air compressor, IMT 1015 service crane with wired remote, rear work platform, vise, tow hitch, odometer reading: 379,355 miles , sn:1HTSDAAN5YH315535	115	_____ 1999 FORD F-450XL SUPERDUTY DUALY CREW CAB SERVICE TRUCK, equipped w/ Triton V10 engine, automatic transmission, 176 wheel base, Knapheide 9 ft enclosed service body, tow package, odometer reading: 65,539 miles , sn:1FDXW46S8XEE76728
111	_____ 2001 GMC 3500HD SL DUALY MECHANICS TRUCK, equipped w/ 6.5L diesel engine, 5 speed manual transmission, Auto Crane 12 ft service body, (2) rear stabilizers, 2008 Ingersoll-Rand 200 psi air compressor, Auto Crane 6006H Crane, 28 ft height capability, 6,000LB capacity, grease pump & reel, odometer reading: 116,698 miles , sn:3GDKC34FX1M101198	116	_____ 2004 FORD F-450XL SUPERDUTY DUALY SERVICE TRUCK, equipped w/ Powerstroke V8 turbo diesel engine, automatic transmission, 2wd, 165 wheel base, Knapheide 12 ft service body, tow package, odometer reading: 172,605 miles , sn:1FDXF46P24EA07674
		117	_____ 2008 FORD F-250XL SUPERDUTY EXTENDED CAB SERVICE TRUCK, equipped w/ Powerstroke V8 turbo diesel engine, automatic transmission, cruise, 158 wheel base, Knapheide service body, tow package, odometer reading: 169,161 miles , sn:1FDSX20R78ED02474

THANK YOU FOR ATTENDING OUR AUCTIONS

4070 NC Hwy 211 E
LUMBERTON, NC 28358
(910) 739-0547
www.meekinsauction.com

Printed:04/10/2014 09:21

Catalog for Auction:ANNUAL SPRING CONTRACTORS AUCTION

Lot Num	Description	Lot Num	Description
118	2006 FORD F-350XL SUPERDUTY SERVICE TRUCK, equipped w/ Powerstroke V8 turbo diesel engine, 6 speed transmission, 141 wheel base, Reading 9 ft service body, tow package, odometer reading: 254,398 miles , sn:1FDSF34P56EC71661	124	BEECH MOUNTAIN, NC VACATION REAL ESTATE AUCTION, Beech Mountain Chalet style home offering 3BR/2.5BA with loft on .35 acres near Ski Beech, Beech Mountain Golf Club and Buckeye Lake recreation center. Enjoy a great vacation home at a cool elevation and good location near all Beech Mountain amenities including skiing, golf, tennis, fishing, hiking, shopping, and more. PROPERTY ADDRESS: 702 Pine Ridge Road, Beech Mountain, NC 28604 COUNTY: Watauga YEAR BUILT: 1968 TOTAL LIVING SQ FT: 1,320 ADDITIONAL REMARKS: located on state maintained road with great access, everything in the home has been inspected and up to code, many renovations and improvements completed in 2013 BUYERS PREMIUM: 5 PERCENT PAYMENT TERMS: 10 percent down payment on day of auction and remaining balance within 30 days
119	1999 CHEVROLET 3500 SERVICE TRUCK, equipped w/ 6.5L diesel engine, automatic transmission, Altec tool service body, tow hitch, odometer reading: 230,798 miles , sn:1GBGC34F9XF046671		
120	1998 GMC 3500 DUALY FLATBED TRUCK, equipped w/ 5.7L V8 gas engine, 5 speed transmission, 12 ft flatbed body with mounted Excell 5500 series pressure washer, odometer reading: 181,691 miles , sn:1GDHC34R2WF009532		
121	1989 FORD F-350 CUSTOM DUALY - ALTEC BUCKET TRUCK, equipped w/ 5.8L V8 gas engine, automatic, dual fuel tanks, Altec 8 ft service body, Onan 6.5HP generator set, Altec 200 aerial boom, sn:0189-G2198, 20 ft working reach height capability, 300LBS bucket capacity rating, tow hitch , sn:1FDKF37H2KNA35290	125	2011 CHALLENGER MT475B (4X4) UTILITY TRACTOR, sn:B188035, equipped w/ A/C Cab, Cat 6.6L (175HP) engine power, 16 speed powershift transmission, differential lock, work light package, brush guard, 540/1000 pto, three point hitch, triple hydraulic remote outlets, Michelin 14.9 R 28 front tires, Michelin 18.4 R 38 rear tires, meter reading: 2,019 hrs
122	1994 DAMON CORP CHALLENGER M310 SERIES RECREATIONAL MOTOR HOME VEHICLE, equipped w/ Chevrolet 454 engine, automatic transmission, cruise, 31 ft body, dining table, appliances, full bath, rear master bedroom, sleeps 6, A & E awning, storage compartments, Generac NP-52G generator set, utility hook ups, Reese tow hitch, odometer reading: 63,838 original miles , sn:1GBKP3794R3317139	126	2013 INDUSTRIAS AMERICA HD12 BOX BLADE, equipped w/ 12 ft working width, unused, 14L-16.1 Treadura tires, pull type
		127	2008 NEW HOLLAND TD95D (4X4) UTILITY TRACTOR, sn:HJD089555, equipped w/ A/C Cab, 4 cyl (95HP) engine, 12 speed synchro shift transmission, work light package, differential lock, brush guard, New Holland 820TL front loader attachment, three point hitch, pto, draw bar, dual hydraulic remote valves, Michelin 13.6 R 24 front tires, Michelin 18.4 R 34 rear tires, meter reading: 341 hrs
123	1983 FORD ECONOLINE PASSENGER BUS, equipped w/ 5.8L gas engine, automatic transmission, 138 wheel base, gvwr: 9000LBS, Thomas bus body , sn:1FDJE37Y11DHA86313		

THANK YOU FOR ATTENDING OUR AUCTIONS

4070 NC Hwy 211 E
LUMBERTON, NC 28358
(910) 739-0547

Printed:04/10/2014 09:21

www.meekinsauction.com

Catalog for Auction:ANNUAL SPRING CONTRACTORS AUCTION

Lot Num	Description	Lot Num	Description
128	2008 NEW HOLLAND TD5050 (4X4) UTILITY TRACTOR, sn:Z8JN51650, equipped w/ A/C Cab, 4 cyl (95HP) engine, 12 speed synchro shift transmission, work light package, three point hitch, pto, draw bar, dual hydraulic remote valves, front weights package, 340/85R 24 front tires, 460/85R 34 rear tires, meter reading: 501 hrs	134	FORD TW-20 ROW CROP TRACTOR, sn:60215, equipped w/ Enclosed Cab, 6 cyl (140HP) engine, dual power transmission, work light package, three point hitch, pto, dual hydraulic remote outlets, draw bar, 11.00-16 front tires, 20.8-38 rear tires
129	KUBOTA M9540 (4X4) UTILITY TRACTOR, sn:50508, equipped w/ Rops Canopy, 4 cyl (95HP) engine, hydraulic shuttle transmission, work light package, three point hitch, pto, draw bar, triple hydraulic remote valves, front weights, 12.4-24 front tires, 18.4-30 rear tires, meter reading: 2,991 hrs	135	ALLIS-CHALMERS 7060 AGRICULTURAL TRACTOR, sn:7060-7228, equipped w/ Enclosed Cab, 6 cyl (160HP) engine, power shift, work light package, three point hitch, pto, dual hydraulic remote outlets, draw bar, front weights package, 14L-16.1 front tires, 20.8-38 rear tires, meter reading: 4,168 hrs
130	KUBOTA MX5100 UTILITY TRACTOR, sn:13294, equipped w/ Rops Canopy, 4 cyl (51HP) engine, work light package, three point hitch, pto, draw bar, single hydraulic remote valve, front weights, 9.5L-15SL front tires, 14.9-26 rear tires, meter reading: 298 hrs	136	ALLIS-CHALMERS 7030 AGRICULTURAL TRACTOR, sn:7030-4120, equipped w/ Enclosed Cab, 6 cyl (130HP) engine, power shift, work light package, three point hitch, pto, dual hydraulic remote outlets, draw bar, front weights package, 11.00-16 front tires, 18.4 - 38 rear dual tires
131	KUBOTA L3710 HST (4X4) UTILITY TRACTOR, sn:70355, equipped w/ Roll Bar, 4 cyl (37HP) engine, hydrostatic transmission, work light package, three point hitch, pto, draw bar, single hydraulic remote valve, 8.3-16 front tires, 14.9-24 rear tires, meter reading: 845 hrs	137	ALLIS-CHALMERS 7030 AGRICULTURAL TRACTOR, sn:7030-2882, equipped w/ Enclosed Cab, 6 cyl (130HP) engine power, work light package, three point hitch, pto, dual hydraulic remote outlets, draw bar, 18.4-38 rear tires, meter reading: 4,028 hrs
132	CASE INTERNATIONAL 2096 AGRICULTURAL TRACTOR, sn:17938570, equipped w/ A/C Cab, CDC 5.9L (116HP) diesel engine, partial power shift transmission, light package, three point hitch, pto, draw bar, dual hydraulic remote valve, dual tires, 18.4-38 rear tires	138	2005 NEW HOLLAND TT55 UTILITY TRACTOR, sn:D2A10001, equipped w/ Roll Bar, 3 cyl (55HP) engine, constant mesh transmission, brush guard, work light package, three point hitch, pto, single hydraulic remote valve, draw bar, 9.5L-15 front tires, 14.9-28 rear tires, meter reading: 581 hrs
133	JOHN DEERE 4630 GENERATION II SERIES ROW-CROP TRACTOR, sn:4630W004553R, equipped w/ Enclosed Cab, 6 cyl (150HP) engine, power shift transmission, 2wd, work light package, three point hitch, pto, dual hydraulic remote outlets, draw bar, 11.00-16 front tires, 18.4 R 42 rear tires	139	2000 NEW HOLLAND TN65 UTILITY TRACTOR, sn:001189807, equipped w/ Rops Canopy, 3 cyl (65HP) 2.9L diesel engine, synchro command transmission, work light package, brush guard, three point hitch, pto, single hydraulic remote outlet, draw bar, 11L-15SL front tires, 16.9-24 rear tires, low meter hrs

THANK YOU FOR ATTENDING OUR AUCTIONS

4070 NC Hwy 211 E
LUMBERTON, NC 28358
(910) 739-0547

Printed:04/10/2014 09:21

www.meekinsauction.com

Catalog for Auction:ANNUAL SPRING CONTRACTORS AUCTION

Lot Num	Description	Lot Num	Description
140	2002 NEW HOLLAND TN75 UTILITY TRACTOR, sn:001265816, equipped w/ Rops Canopy, 4 cyl (75HP) engine, synchro command transmission, work light package, three point hitch, pto, dual hydraulic remote outlets, 9.5-15 front tires, 16.9-30 rear tires, meter reading: 3,277 hrs	147	1975 INTERNATIONAL HARVESTER 140 FARM TRACTOR, sn:54962J, equipped w/ 4 cyl gas engine, sliding gear transmission, light package, Cole distributor, fast hitch, pto, lift arms, cultivator attachments, 11.2-24 rear tires
141	2011 NEW HOLLAND BOOMER 30 (4X4) UTILITY TRACTOR, sn:2107011925, equipped w/ Roll Bar, 4 cyl (30HP) diesel engine, hydrostatic transmission, work light package, three point hitch, New Holland 240TL front end loader attachment, quick attach loader bucket, 7.00-14 front tires, 11.2-24 rear tires, meter reading: 325 hrs	148	1949 INTERNATIONAL HARVESTER FARMALL SUPER A FARM TRACTOR, sn:271053, equipped w/ 4 cyl gas engine, sliding gear transmission, light package, pto, lift arms, cultivator attachments, 11.2-24 rear tires
142	MASSEY FERGUSON 50E (4X4) UTILITY TRACTOR, sn:5157-D1124, equipped w/ Rops Canopy, Perkins 4 cyl engine, power shuttle transmission, work light package, hydraulic dozer blade, three point hitch, pto, draw bar, 12.5/80-18 front tires, 16.9/14-28 rear tires	149	1979 INTERNATIONAL HARVESTER 184 LO-BOY UTILITY TRACTOR, sn:2000116U050193, equipped w/ 4 cyl gas engine, light package, 2wd, 9.5-24 rear tires, Woods 59 belly mower attachment
143	FORD 3000 UTILITY TRACTOR, sn:G239688, equipped w/ open station, 4 cyl gas engine, brush guard, three point hitch, pto, 12.4-28 rear tires	150	1964 INTERNATIONAL HARVESTER FARMALL 140 AGRICULTURAL TRACTOR, sn:27461J, equipped w/ 4 cyl gas engine, 4 forward/1 reverse transmission, light package, fast hitch, lift arms, cultivator attachments, 12.4-24 rear tires
144	JOHN DEERE 2030 ROW-CROP TRACTOR, equipped w/ Rops Canopy, 4 cyl diesel engine, three point hitch, pto, dual hydraulic remote valves, draw bar, 15.5-38 rear tires	151	1955 INTERNATIONAL HARVESTER 300 UTILITY TRACTOR, sn:13664J, equipped w/ 4 cyl gas engine, torque amplifier transmission, light package, pto, 13.6-28 rear tires
145	CASE 380 UTILITY TRACTOR, sn:951228, equipped w/ Rops Canopy, 4 cyl diesel engine, brush guard, three point hitch, pto, 18.4-16.1 rear turf tires	152	LONG 445 UTILITY TRACTOR, sn:520528, equipped w/ 3 cyl diesel engine, brush guard, three point hitch, pto, 12.4-28 rear tires
146	CASE IH 485 UTILITY TRACTOR, sn:B480017B021408, equipped w/ Rops Canopy, 3 cyl (53HP) engine, work light package, three point hitch, pto, draw bar, single hydraulic remote valve, 7.50-16SL front tires, 14.9-28 rear tires, meter reading: 2,874 hrs	153	FORD 2000 UTILITY TRACTOR, sn:1429773, equipped w/ 4 cyl diesel engine, three point hitch, pto, 13.6-28 rear tires, Super Dexta series
		154	INTERNATIONAL HARVESTER FARMALL 140 ANTIQUE TRACTOR, sn:30154JJK, equipped w/ Open station, 4 cyl engine, 4 speed transmission, pto, quick attach, cultivator attachments, 11.2-24 rear tires

THANK YOU FOR ATTENDING OUR AUCTIONS

4070 NC Hwy 211 E
LUMBERTON, NC 28358
(910) 739-0547

Printed:04/10/2014 09:21

www.meekinsauction.com

Catalog for Auction:ANNUAL SPRING CONTRACTORS AUCTION

Lot Num	Description	Lot Num	Description
156	AG-CHEM TERRA-GATOR 1603T SPREADER APPLICATOR TRUCK, sn:1614879, equipped w/ Enclosed Cab, Cat 3208 engine power, automatic transmission, work light package, reverse camera monitor, E-Z steer system, AG Leader monitor display, stainless steel spreader body, 66 x 43.00-25 tires, meter reading: 5,487 hrs	161	2001 CASE INTERNATIONAL 2388 (4WD) AXIAL-FLOW COMBINE, sn:JJC0269668, equipped w/ A/C Cab, Cummins 6 cyl (280HP) turbo engine, hydrostatic transmission, work light package, 210 bushel grain tank capability, 30.5L-32 front tires, 18.4-26 rear tires, 2,851 engine hrs, 2,308 separator hrs
157	AG-CHEM TERRA-GATOR 1603T SELF-PROPELLED SPRAYER, sn:1615999, equipped w/ Enclosed Cab, Caterpillar 250 horsepower engine, automatic transmission, work light package, foam marker controls, Terra-Tronics II sprayer monitor, 60 ft boom spray width, 1000 gallon stainless steel tank, Goodyear 66 x 43.00-25NHS Super Terra-Grip tires, meter reading: 7,941 hrs	162	1992 CASE INTERNATIONAL 1600 AXIAL-FLOW COMBINE, sn:JJC0103281, equipped w/ A/C Cab, Cummins 6 cyl (190HP) engine, hydrostatic transmission, work light package, 180 bushel grain tank capability, 24.5-32 front tires, 14.9-24 rear tires, meter reading: 4,166 hrs
158	WILLMAR 745 SELF-PROPELLED SPRAYER, equipped w/ A/C Cab, John Deere 4039T engine, hydrostatic transmission, work light package, full time 4WD, Raven SCS440 sprayer cab controls, 60 FT spray boom, 500 gallon poly tank, RHS MKR-5000 marking system, air ride suspension, 12.4-24 Traction Field & Road tires, meter reading: 3,011 hrs	163	1994 CASE INTERNATIONAL 1688 (4WD) AXIAL-FLOW COMBINE, sn:JJC0119917, equipped w/ A/C Cab, Cummins 6 cyl (260HP) turbo engine, hydrostatic transmission, work light package, 210 bushel grain tank capability, 30.5L-32 front tires, 16.9-24 rear tires, meter reading: 3,519 hrs
159	MELROE 220 SPRA COUPE SELF PROPELLED SPRAYER, sn:208912424, equipped w/ A/C Cab, gas engine, 4 speed transmission, work light package, 50 FT spray boom, 200 gallon poly tank, field marker system, tow hitch accessory, meter reading: 2,337 hrs	164	1998 CASE INTERNATIONAL 2188 AXIAL-FLOW COMBINE, sn:JJC0193859, equipped w/ A/C Cab, 6 cyl (260HP) engine, hydrostatic drive, work light package, AFS track system monitor, 210 grain tank capacity bu., 30.5L-32 front tires, 14.9-24 rear tires, meter reading: 4,726 hrs
160	2003 JOHN DEERE 9650STS (4WD) COMBINE, sn:H09650S696686, equipped w/ A/C Cab, 6 cyl (290HP) turbo engine, hydrostatic transmission, work light package, 250 bushel grain tank capability, 18.4 R 42 front dual tires, 18.4 R 26 rear tires, 3,383 engine hrs, 2,209 separator hrs	165	1991 CASE INTERNATIONAL 1680 AXIAL-FLOW COMBINE, sn:JJC0116252, equipped w/ A/C Cab, Cummins 6 cyl (235HP) turbo engine, hydrostatic transmission, work light package, 208 bushel grain tank capability, 30.5L-32 front tires, 14.9-24 rear tires, meter reading: 3,583 hrs
		166	1995 CASE INTERNATIONAL 1666 AXIAL-FLOW COMBINE, sn:JJC0106836, equipped w/ A/C Cab, 6 cylinder (215HP) engine, hydrostatic transmission, work light package, 180 grain tank cap bu., 30.5L-32 front tires, 14.9-24 rear tires, meter reading: 5,265 hrs

THANK YOU FOR ATTENDING OUR AUCTIONS

4070 NC Hwy 211 E
LUMBERTON, NC 28358

Printed:04/10/2014 09:21

(910) 739-0547

www.meekinsauction.com

Catalog for Auction:ANNUAL SPRING CONTRACTORS AUCTION

Lot Num	Description	Lot Num	Description
167	1983 INTERNATIONAL HARVESTER 1480 AXIAL-FLOW COMBINE, sn:1720235U044496, equipped w/ Enclosed Cab, 6 cyl (210HP) engine, hydrostatic transmission, work light package, 208 bushel grain tank capability, 30.5L-32 front tires, 18.4-16.1 rear tires, meter reading: 4,025 hrs	173	1998 DODGE 1500 SPORT SERIES EXTENDED CAB PICKUP, equipped w/ V8 Magnum engine, automatic, cruise, power windows and locks, cloth interior, short bed, camper shell accessory, tow package, odometer reading: 121,832 miles , sn:3B7HC13Z8WG106534
168	2001 JOHN DEERE 4710 SELF-PROPELLED SPRAYER, sn:N04710X000670, equipped w/ A/C Cab, John Deere 6.8L (200HP) engine, hydrostatic transmission, Greenstar Spraystar Tracking in-cab display monitor, work light package, 60 ft spray boom width, 800 gallon poly tank, rinse tank, throttle and traction controls, agitation, full time 4-wheel-drive, air spring suspension, Michelin 380/90R 46 tires, meter reading: 3,667 hrs	174	2004 CHEVROLET 1500 SILVERADO PICKUP, equipped w/ Vortec 4.8L engine, automatic transmission, cruise, long bed, tow package, odometer reading: 197,552 miles , sn:1GCEC14V5XE234947
169	2005 FORD F-350 LARIAT SUPERDUTY EXTENDED CAB PICKUP, equipped w/ Powerstroke V8 turbo diesel engine, automatic, cruise, leather grain interior, long bed, gooseneck hitch, tow package, odometer reading: 297,042 miles , sn:1FTWX30P35EC02054	175	1992 FORD F-150XLT EXTENDED CAB (4X4) PICKUP, equipped w/ 5.8L engine, automatic transmission, cruise, power windows and locks, cloth interior, short bed, aluminum tool box, tow package, odometer reading: 218,329 miles , sn:1FTEX14H1NKA57388
170	2005 FORD F-250XL SUPERDUTY CREW CAB PICKUP, equipped w/ Power Stroke V8 (6.0L) diesel engine, automatic, cruise, long bed, tow package, odometer reading: 161,916 miles , sn:1FTSW20P65EB34389	176	2004 CHEVROLET 2500HD SILVERADO PICKUP, equipped w/ Vortec 6.0L engine, automatic transmission, cruise, long bed, aluminum tool box, tow package, odometer reading: 261,944 miles , sn:1GCHC24U74E381714
171	2004 FORD F-250 LARIAT SUPERDUTY (4X4) EXTENDED CAB PICKUP, equipped w/ Powerstroke V8 (6.0L) Turbo diesel engine, automatic, cruise, power windows and locks, leather interior, brush guard, tow package, odometer reading: 188,610 miles , sn:1FTNX21P14EB81434	177	1999 FORD F-350XL SUPERDUTY CREW CAB PICKUP, equipped w/ Triton V10 engine, automatic transmission, short bed, liner, tow package, odometer reading: 289,299 miles , sn:1FTSW30S1XEE73168
172	2002 BMW X5 SPORT UTILITY VEHICLE, equipped w/ 3.0L V6 engine, automatic transmission, cruise, leather grain interior, sunroof, heated seats, cargo rack, odometer reading: 192,287 miles , sn:5UXFA53552LP28070	178	2001 CHEVROLET 2500HD SILVERADO EXTENDED CAB PICKUP, equipped w/ Vortec 8.1L engine, automatic transmission, cruise, long bed, gooseneck hitch, spray-on bed liner, tow package, odometer reading: 301,685 miles , sn:1GCHC29G11E225781
		179	2007 CHEVROLET 2500HD SILVERADO LT EXTENDED CAB PICKUP, equipped w/ Vortec 6.0L engine, automatic transmission, cruise, power windows and locks, cloth interior, short bed, tow package, *note: True Miles Unknown , sn:1GCHC29U37E167221

THANK YOU FOR ATTENDING OUR AUCTIONS

4070 NC Hwy 211 E
LUMBERTON, NC 28358
(910) 739-0547

Printed:04/10/2014 09:21

www.meekinsauction.com

Catalog for Auction:ANNUAL SPRING CONTRACTORS AUCTION

Lot Num	Description	Lot Num	Description
180	2000 CHEVROLET 2500 SILVERADO PICKUP, equipped w/ Vortec 6.0L V8 engine, automatic transmission, cruise, long bed, tow package, odometer reading: 286,578 miles , sn:1GCGC24U7YE249358	188	2006 DODGE STRATUS SXT SEDAN, equipped w/ 2.4L engine, automatic, cruise, power windows and locks, odometer reading: 148,138 miles , sn:1B3EL46X16N150320
181	2007 FORD F150XLT EXTENDED CAB PICKUP, equipped w/ Triton 5.4L engine, automatic, cruise, power windows and locks, cloth interior, short bed, spray on liner, tow package, odometer reading: 134,552 miles , sn:1FTPX12V07FA49943	189	2006 CHEVROLET IMPALA LS SEDAN AUTOMOBILE, equipped w/ V6 3.5L engine, automatic transmission, cruise, cloth interior, power windows and locks, odometer reading: 232,714 miles , sn:2G1WB58K569244760
182	2004 FORD F-150XL EXTENDED CAB PICKUP, equipped w/ Triton V8 engine, automatic transmission, cruise, short bed, tow hitch, odometer reading: 187,569 miles , sn:2FTRX17W24CA98465	190	2007 FORD TAURUS SEL SEDAN AUTOMOBILE, equipped w/ 3.0L V6 engine, automatic transmission, cruise, power windows and locks, cloth interior, sunroof, odometer reading: 157,823 miles , sn:1FAFP56U57A163184
183	1999 CHEVROLET 1500 SILVERADO PICKUP, equipped w/ Vortec 4.8L engine, automatic transmission, cruise, long bed, tow package, odometer reading: 368,467 miles , sn:1GCEC14V5XE234947	191	2006 FORD TAURUS SE SEDAN AUTOMOBILE, equipped w/ 3.0L V6 engine, automatic transmission, cruise, power windows and locks, cloth interior, odometer reading: 126,050 miles , sn:1FAFP53U36A110017
184	2010 FORD TRANSIT CONNECT VAN TRUCK, equipped w/ 2.0L 4 cyl engine, automatic, cruise, cloth interior, advance trac RSC series, odometer reading: 142,969 miles , sn:NM0KS9AN3AT032648	192	2006 PONTIAC GRAND PRIX SEDAN, equipped w/ V6 (3.8L) engine, automatic, cruise, power windows and locks, odometer reading: 137,807 miles , sn:2G2WP552661113689
185	1998 JAGUAR XJ8 VANDEN PLAS SEDAN AUTOMOBILE, equipped w/ 4.0L V8 engine, automatic transmission, cruise, leather grain interior, sunroof, odometer reading: 151,552 miles , sn:SAJKX6243WC839981	193	2004 LINCOLN AVIATOR SPORT UTILITY VEHICLE, equipped w/ 4.6L V8 engine, automatic transmission, cruise, leather grain interior, cargo rack, odometer reading: 153,506 miles , sn:5LMEU68H44ZJ46306
186	1995 BMW 325i CONVERTIBLE COUPE AUTOMOBILE, equipped w/ 2.5L V6 engine, 5 speed transmission, cruise, leather interior, odometer reading: 186,924 miles , sn:WBABJ5328SJC81638	194	1994 TOYOTA CAMRY LE AUTOMOBILE, equipped w/ 2.2L 16 valve engine, automatic, cruise, power windows and locks, cloth interior, odometer reading: 232,346 miles , sn:4T1SL12E1RV855048
187	2004 PONTIAC GRAND PRIX GT SEDAN, equipped w/ 3.8L engine, automatic, cruise, power windows and locks, odometer reading: 171,207 miles , sn:2G2WP5ZZ641147942	195	2013 TOYOTA YARIS LE AUTOMOBILE, equipped w/ 1.5L 4 cyl electric assist engine, automatic, cruise, power windows and locks, cloth interior, odometer reading: 3,397 miles , sn:JTDKTUD36DD558042

THANK YOU FOR ATTENDING OUR AUCTIONS

4070 NC Hwy 211 E
LUMBERTON, NC 28358

Printed:04/10/2014 09:21

(910) 739-0547

www.meekinsauction.com

Catalog for Auction:ANNUAL SPRING CONTRACTORS AUCTION

Lot Num	Description	Lot Num	Description
196	2007 NISSAN ALTIMA 2.5S SEDAN AUTOMOBILE, equipped w/ 2.5L engine, automatic, cruise, power windows and locks, cloth interior, odometer reading: 189,954 miles , sn:1N4AL21E77C186569	203	2002 CHEVROLET TRAIL BLAZER LT (4X4) SPORT UTILITY VEHICLE, equipped w/ Vortec 4.2L engine, automatic transmission, cruise, power windows and locks, cloth interior, cargo rack, tow package, odometer reading: 167,579 miles , sn:1GNET16S826135553
197	2004 CHEVROLET MONTE CARLO SS COUPE AUTOMOBILE,, equipped w/ 3.8L V6 engine, automatic, cruise, power windows and locks, cloth interior, odometer reading: 103,275 miles , sn:2G1WX12K649252561	204	1978 MERCURY COUGAR COUPE CLASSIC AUTOMOBILE, equipped w/ V8 engine, automatic transmission, cruise, power windows, odometer reading: 96,724 miles , sn:8H93H636971
198	2003 FORD THUNDERBIRD CONVERTIBLE COUPE, equipped w/ V8 (3.9L) engine, automatic transmission, cruise, power windows & locks, leather interior, odometer reading: 91,949 miles , sn:1FAHP60A63Y106488	205	2001 GMC YUKON XL SLT (4X4) SPORT UTILITY VEHICLE, equipped w/ Vortec 5.3L V8 engine, automatic, cruise, power windows and locks, leather interior, dvd player, heated seats, cargo rack, tow package, odometer reading: 193,471 miles , sn:1GKFK16T01J150363
199	1990 JEEP WRANGLER (4X4) SPORT UTILITY VEHICLE, equipped w/ 6 cylinder engine, automatic transmission, hard and soft tops, roll bar, cd/fm/am stereo, ac/heat, backseat, tow package, Uniroyal 31 x 10.50 R 15LT Laredo AWT tires, odometer reading: 121,325 miles , sn:2J4FY29T1LJ553464	206	2002 NISSAN FRONTIER XE CREW CAB PICKUP, equipped w/ 3.3L V6 engine, automatic, cruise, power windows and locks, cloth interior, short bed, cargo rack, odometer reading: 169,701 miles , sn:1N6ED29X12C376355
200	2004 CADILLAC CTS SEDAN AUTOMOBILE, equipped w/ 3.6L V6 engine, automatic transmission, cruise, leather grain interior, heated seats, sunroof, odometer reading: 162,621 miles , sn:1G6DM577540100495	207	1989 LUFKIN FL-75 FLATBED TRAILER, equipped w/ 96 inch x 45 ft load deck, wood floor, headache rack, 42,400LB rear axles, gvw rating: 70,000LBS, tandem spread axle, air ride suspension, rear dump valve, 11R 24.5 tires
201	2002 CHEVROLET TRAILBLAZER LT (4X4) SPORT UTILITY VEHICLE, equipped w/ Vortec 4.2L engine, automatic, cruise, power windows & locks, leather interior, sunroof, 3rd row seating, tow package, odometer reading: 181,809 miles , sn:1GNET16S326107370	208	1999 SOMERSET ALF-01 LIVE FLOOR TRAILER, equipped w/ 102 inch x 48 ft aluminum body, 106 inch sides, tandem axle, Keith Walking Floor system, 42,400LB rear axles, gvwt rating: 80,000LBS, tarp system, ICU bars, spring suspension, 11R 24.5 tires , sn:1S94A4826XM006410
202	2008 TOYOTA MATRIX SEDAN, equipped w/ VVT-I 16 Valve (1.8L) engine, automatic, cruise, power windows & locks, odometer reading: 127,904 miles , sn:2T1KR32E78C707087	209	1990 WILSON DWH-200 GRAIN HOPPER TRAILER, equipped w/ 96 inch x 42 ft aluminum body, dual bottom dump hoppers, tarp system, tandem axle, spring suspension, Alcoa rims, 11R 24.5 tires , sn:1W1MAF1D7LA213552

THANK YOU FOR ATTENDING OUR AUCTIONS

4070 NC Hwy 211 E
LUMBERTON, NC 28358

Printed:04/10/2014 09:21

(910) 739-0547

www.meekinsauction.com

Catalog for Auction:ANNUAL SPRING CONTRACTORS AUCTION

Lot Num	Description	Lot Num	Description
210	2004 EAGER BEAVER 50GSL/3 (TRI-AXLE) LOWBOY TRAILER, equipped w/ 50-Ton hauling capability, non ground bearing, 102 inch x 24 ft load deck, outriggers, all wheel ABS, boom trough, aluminum rims, Ridewell air ride suspension, air lift third axle, 255/70R 22.5 tires , sn:112SD248X4L060996	216	1993 HUDSON 10 TON TAG EQUIPMENT TRAILER, equipped w/ 96 inch x 18 ft load deck, wood floor, 5 ft beaver tail, loading ramps, tandem axle, 8.75-16.5LT tires , sn:10HHTD1D1P1000229
211	2007 TRAIL-EZE TE70HT48 HYDRAULIC TAIL LOWBOY TRAILER, equipped w/ 35 Ton hauling capability, 102 inch x 38 ft main load deck, hydraulic folding load ramp tail, Braden winch, Right Weight load scale accessory, Halden ABS, air ride suspension, tandem axle, Michelin 255/70R 22.5 tires , sn:1DA72C7417C019037	217	2006 TEXAS BRAGG BP-20 EQUIPMENT TRAILER, equipped w/ 14,000LB hauling capability, 7 ft x 20 ft load deck, wood floor, tandem axle, loading ramps, LT215/85R 16 tires , sn:17XFP202661061681
212	1985 TRAIL KING 1500-4060 LOWBOY TRAILER, equipped w/ 35 Ton hauling capability, non ground bearing, 96 inch x 20 ft load deck, tandem axle, spring suspension, deck over wheels, 4 ft beavertail, loading ramps, 10R 17.5 tires , sn:1TKH04023FM035556	218	2003 TEXAS BRAGG BP-20 EQUIPMENT TRAILER, equipped w/ 14,000LB hauling capability, 7 ft x 20 ft load deck, wood floor, tandem axle, loading ramps, LT215/85R 16 tires , sn:17XFP202431031680
213	2005 KAUFMAN 25 TON TAG EQUIPMENT TRAILER, equipped w/ 102 inch x 20 ft load deck, air brakes, wood floor, 5 ft beavertail, Hi-Tensile steel construction design, loading ramps, tandem axle, gvwt rating: 62,000LBS, spring suspension, 215/75R 17.5 tires , sn:15XFH29385L001908	219	1998 TEXAS BRAGG BP-20 EQUIPMENT TRAILER, equipped w/ 14,000LB hauling capability, 7 ft x 20 ft load deck, wood floor, loading ramps, tandem axle, LT215/85R 16 tires , sn:17XFP2021W1987836
214	1997 TRAIL KING 25 TON TAG EQUIPMENT TRAILER,, equipped w/ 102 inch x 18 ft load deck, air brakes, wood floor, 5 ft beavertail, loading ramps, tri-axle, Hutchens spring suspension, 215/75R 17.5 tires , sn:1TKC02638VM086841	220	2001 TEXAS BRAGG BP-20 EQUIPMENT TRAILER, equipped w/ 14,000LB hauling capability, 7 ft x 20 ft load deck, wood floor, tandem axle, LT215/85R 16 tires , sn:17XFP1625X1994965
215	1972 ROGERS TT16-20-20-15 TILT DECK TAG EQUIPMENT TRAILER, equipped w/ 20 Ton hauling capability, 96 inch x 20 ft load deck, wood floor, air brakes, tandem axle, 8.25 R 15 tires , sn:3308	221	2007 KAUFMAN HP SERIES TAG EQUIPMENT TRAILER, equipped w/ 12 Ton hauling capability, gvwt rating: 25,900LBS, 102 inch x 20 ft load deck, wood floor, 5 ft beavertail, loading ramps, tri axle, ST235/80R 16 tires, *note: no title available, sold with bill of sale only , sn:15XFH25397L000792
		222	2014 PJ T6222 TILT DECK UTILITY TRAILER, equipped w/ 14,000LB hauling capability, 6 ft 7 in x 22 ft load deck, wood floor, electric brakes, tandem axle, ST235/80R 16 tires , sn:3CVT62220E2517073

THANK YOU FOR ATTENDING OUR AUCTIONS

4070 NC Hwy 211 E
LUMBERTON, NC 28358
(910) 739-0547

Printed:04/10/2014 09:21

www.meekinsauction.com

Catalog for Auction:ANNUAL SPRING CONTRACTORS AUCTION

Lot Num	Description	Lot Num	Description
223	2014 PJ T6202 TILT DECK UTILITY TRAILER, equipped w/ 14,000LB hauling capability, 74 inch x 20 ft load deck, wood floor, electric brakes, tandem axle, ST235/80R 16 tires , sn:4P5T6202XE1209438	230	2014 PJ T6202 TILT DECK UTILITY TRAILER, equipped w/ 14,000LB hauling capability, 6 ft 7 in x 20 ft load deck, wood floor, electric brakes, tandem axle, ST205/75R 15 tires , sn:3CVT62025E2517119
224	2014 PJ T6202 TILT DECK UTILITY TRAILER, equipped w/ 14,000LB hauling capability, 74 inch x 20 ft load deck, wood floor, electric brakes, tandem axle, ST235/80R 16 tires , sn:4P5T6202021E1209442	231	2014 PJ CC202 UTILITY TRAILER, equipped w/ 14,000LB hauling capability, 6 ft 11 in x 20 ft load deck, wood floor, electric brakes, loading ramps, tandem axle, ST235/80R 16 tires , sn:4P5CC2024E1209377
225	2014 PJ T6202 TILT DECK UTILITY TRAILER, equipped w/ 14,000LB hauling capability, 74 inch x 20 ft load deck, wood floor, electric brakes, tandem axle, ST235/80R 16 tires , sn:4P5T62021E1209439	232	2014 PJ CC202 UTILITY TRAILER, equipped w/ 14,000LB hauling capability, 6 ft 11 in x 20 ft load deck, wood floor, electric brakes, loading ramps, tandem axle, ST235/80R 16 tires , sn:4P5CC2029E1209374
226	2014 PJ T6202 TILT DECK UTILITY TRAILER, equipped w/ 14,000LB hauling capability, 74 inch x 20 ft load deck, wood floor, electric brakes, tandem axle, ST235/80R 16 tires , sn:4P5T62028E1209440	233	2014 PJ CC202 UTILITY TRAILER, equipped w/ 14,000LB hauling capability, 6 ft 11 in x 20 ft load deck, wood floor, electric brakes, loading ramps, tandem axle, ST235/80R 16 tires , sn:4P5CC2028E1209379
227	2014 PJ T6202 TILT DECK UTILITY TRAILER, equipped w/ 14,000LB hauling capability, 74 inch x 20 ft load deck, wood floor, electric brakes, tandem axle, ST235/80R 16 tires , sn:4P5T62028E1209373	234	2014 PJ CC202 UTILITY TRAILER, equipped w/ 14,000LB hauling capability, 6 ft 11 in x 20 ft load deck, wood floor, electric brakes, loading ramps, tandem axle, ST235/80R 16 tires , sn:4P5CC202XE1209285
228	2014 PJ T6202 TILT DECK UTILITY TRAILER, equipped w/ 14,000LB hauling capability, 6 ft 7 in x 20 ft load deck, wood floor, electric brakes, tandem axle, ST205/75R 15 tires , sn:3CVT62021E2517120	235	2014 PJ CC202 UTILITY TRAILER, equipped w/ 14,000LB hauling capability, 6 ft 11 in x 20 ft load deck, wood floor, electric brakes, loading ramps, tandem axle, ST235/80R 16 tires , sn:4P5CC2020E1209375
229	2014 PJ T6202 TILT DECK UTILITY TRAILER, equipped w/ 14,000LB hauling capability, 74 inch x 20 ft load deck, wood floor, electric brakes, tandem axle, ST235/80R 16 tires , sn:4P5T6202XE1209441	236	2014 PJ CC202 UTILITY TRAILER, equipped w/ 14,000LB hauling capability, 6 ft 11 in x 20 ft load deck, wood floor, electric brakes, loading ramps, tandem axle, ST235/80R 16 tires , sn:4P5CC2022E1209376

THANK YOU FOR ATTENDING OUR AUCTIONS

4070 NC Hwy 211 E
LUMBERTON, NC 28358
(910) 739-0547

Printed:04/10/2014 09:21

www.meekinsauction.com

Catalog for Auction:ANNUAL SPRING CONTRACTORS AUCTION

Lot Num	Description	Lot Num	Description
237	2014 PJ C5182 UTILITY TRAILER, equipped w/ 7,000LB hauling capability, 7 ft x 18 ft load deck, wood floor, electric brakes, slide-in loading ramps, tandem axle, ST205/75R 15 tires , sn:3CVC51821E2516941	245	2007 SSI CARHAULER UTILITY TILT-DECK TRAILER, equipped w/ 10,000LB hauling capability, 7 ft x 18 ft load deck, steel floor, hydraulic tilt operation, tandem axle, removable fenders, ST235/75D 15 tires , sn:4YZCH182471011969
238	2014 PJ C5202 UTILITY TRAILER, equipped w/ 7,000LB hauling capability, 6 ft 11 in x 20 ft load deck, wood floor, electric brakes, slide-in loading ramps, tandem axle, ST205/75R 15 tires , sn:3CVC52028E2516467	246	2003 SNORKEL TB-60RCU (4X4) BOOM LIFT, sn:SP03007, equipped w/ Cummins B3.3 (65HP) engine, 60 ft platform reach capability, platform rotation, 500LB platform weight capacity, 8 ft basket, 15-19.5 super traction duplex tires, meter reading: 4,905 hrs
239	2014 PJ C5202 UTILITY TRAILER, equipped w/ 7,000LB hauling capability, 6 ft 11 in x 20 ft load deck, wood floor, electric brakes, slide-in loading ramps, tandem axle, ST205/75R 15 tires , sn:3CVC52022E2516464	247	2005 STINGRAY 185LS 25TH ANNIVERSARY EDITION SKI BOAT, sn:US-PNYUSUDHJ405, equipped w/ Volvo 3.0L (135HP) outboard engine, 18 ft fiberglass body, aluminum detachable canopy, CD player, life jackets, ski rope, meter reading only 49 hrs, comes with 2005 WC MFG & Specialty Co Inc aluminum boat trailer, sn:1W7B1181451002758
240	2014 PJ U820 UTILITY TRAILER, equipped w/ 7,000LB hauling capability, 7 ft x 20 ft load deck, wood floor, side loading gates, tandem axle, ST205/75R 15 tires, loading tailgate ramp , sn:3CVU82023E2516145		
241	2014 PJ 8312 UTILITY TRAILER, equipped w/ 3,500LB hauling capability, 6 ft 8 in x 12 ft load deck, wood floor, load tailgate, single axle, ST205/75R 15 tires , sn:3CVU81210E2516120	248	1988 MASTER CRAFT PRO STAR 190 SKI BOAT, sn:MBCPAJB3A888, equipped w/ 19 ft fiberglass body, 351 inboard engine, Monster wakeboard tower accessory, comes with 1988 Master Craft 19M Boat Trailer, sn:19MABAP18J1000313, single axle, 2750LB load capacity rating, 205/75R 14 tires
242	2014 PJ 7712 UTILITY TRAILER, equipped w/ 3,500LB hauling capability, 77 inch width x 12 ft length load deck, wood floor, single axle, loading tailgate, ST205/75R 15 tires , sn:3CVU71218E2517048	248A	2001 AMERA TRAIL SKI BOAT TRAILER, equipped w/ 5500LB hauling capability, propeller guard, guide poles, tandem axle, Maxxis ST205/75R 14 tires , sn:1HTSCABP4SH621037
243	1991 INTERSTATE 24DTA TAG EQUIPMENT TRAILER, equipped w/ 12 Ton hauling capability, 96 in x 19 ft load deck, 5 ft beavertail, loading ramps, tandem axle, 9.50 R 16.5LT tires , sn:1JKDTA205SA120002	249	2005 TIMBER KING TK560DS FORESTRY LOG LOADER, sn:PR60005, equipped w/ A/C Cab, Cat 3056 engine, front cage cab protection, (4) outriggers, mounted on Big John tandem axle trailer, meter reading: 10,194 hrs
244	2007 HUDSON HTD18D TAG EQUIPMENT TRAILER, equipped w/ 10 Ton hauling capability, 96 inch x 18 ft load deck, wood floor, 5 ft beavertail, loading ramps, tandem axle, LT235/85R 16 tires , sn:10HHTD1D971000172		

THANK YOU FOR ATTENDING OUR AUCTIONS

4070 NC Hwy 211 E
LUMBERTON, NC 28358

Printed:04/10/2014 09:21

(910) 739-0547

www.meekinsauction.com

Catalog for Auction:ANNUAL SPRING CONTRACTORS AUCTION

Lot Num	Description	Lot Num	Description
250	2007 PRENTICE 2384 KNUCKLEBOOM LOG LOADER, sn:PR63100, equipped w/ A/C Cab, front cage cab protection, Cummins engine, four hydraulic outriggers, mounted on 2007 Evans trailer, tandem axle running gear, 11R 22.5 tires, meter reading: 11,414 hrs	257	2014 BROOKS BROTHERS PT92-6KXL EXTENDABLE POLE TRAILER, equipped w/ electric brakes, gvw rating: 13,000LBS, Dexter axles, tool storage box, tandem axle, ST235/85R 16 tires , sn:1B9PS09201M274040
251	2005 PRENTICE 410E FORESTRY LOG LOADER, sn:60841, equipped w/ A/C Cab, front cage cab protection, Cummins engine power, (4) outriggers, mounted on Evans tandem axle trailer, meter reading: 11,993 hrs	258	2001 DODGE RAM 2500 SERVICE FLATBED TRUCK, equipped w/ 5.9L gas engine, automatic transmission, 2wd, Omaha Standard flatbed body, tool boxes, storage racks, *note: Inoperable, needs repairs , sn:3B6KC26Z31M585130
252	STONE SR2500 STATIC ASPHALT ROLLER, sn:0951249, equipped w/ open station, Honda engine, hydrostatic transmission, 28 inch front split drum, 32 inch rear drum, water spray system	259	2007 CHRYSLER SEBRING AUTOMOBILE, equipped w/ Dual VVT 2.4L engine, automatic transmission, cruise, power windows and locks, cloth interior, *note: Inoperable, needs repairs , sn:1C3LC46K97N570388
253	MEC 220AM SERIES SCISSOR LIFT, sn:800387, equipped w/ 20 ft platform working height reach capability, electric powered, 500LB platform rated capacity	260	2005 CHRYSLER 300 SEDAN AUTOMOBILE, equipped w/ Hemi 5.7L V8 engine, automatic transmission, cruise, leather interior, sunroof, *note: inoperable, needs repairs , sn:2C3JA63H95H634999
254	2006 DITCH WITCH SK650 MINI SKID STEER LOADER, sn:CMWSK650H60000107, equipped w/ Kubota D1105T (31.5HP) engine, pilot operated controls, stand-on riding platform, rubber tracks, auxiliary hydraulic valves, quick attach loader bucket, meter reading: 869 hrs	261	2004 PONTIAC VIBE SPORT UTILITY VEHICLE, equipped w/ 16 valve 4 cyl engine, automatic transmission, cruise, power windows and locks, cloth interior, cargo rack, odometer reading: 168,577 miles , sn:5Y2SL62834Z469560
255	2008 BROOKS BROTHERS PT92-6K-XLE EXTENDABLE POLE TRAILER, equipped w/ electric brakes, gvw rating: 13,000LBS, Dexter axles, tool storage box, tandem axle, ST235/80R 16 tires , sn:1B9PS09208M274081	262	2005 CHRYSLER PACIFICA SPORT UTILITY VEHICLE, equipped w/ V6 (3.8L) engine, automatic, cruise, power windows and locks, odometer reading: 171,369 miles *note: inoperable, needs repairs , sn:2C8GM48L35R332423
256	2007 BROOKS BROTHERS PT92-6KXL EXTENDABLE POLE TRAILER, equipped w/ electric brakes, gvw rating: 13,000LBS, Dexter axles, tool storage box, tandem axle, LT235/85R 16 tires , sn:1B9PS09217M274248	263	2007 HYUNDAI AZERA LIMITED AUTOMOBILE, equipped w/ V6 (3.8L) engine, automatic, cruise, power windows and locks, leather interior, odometer reading: 137,004 miles *note: inoperable, needs repairs , sn:KMHFC46F07A146340

THANK YOU FOR ATTENDING OUR AUCTIONS

4070 NC Hwy 211 E
LUMBERTON, NC 28358
(910) 739-0547

Printed:04/10/2014 09:21

www.meekinsauction.com

Catalog for Auction:ANNUAL SPRING CONTRACTORS AUCTION

Lot Num	Description	Lot Num	Description
264	2007 SATURN AURA XR AUTOMOBILE, equipped w/ 3.6L engine, automatic, cruise, power windows and locks, sunroof, leather interior, odometer reading: 148,360 miles *note: inoperable, needs repairs , sn:1G8ZV57757F216470	271	2006 CAT 247B SKID STEER LOADER, sn:CAT0247BPMTL02593, equipped w/ Rops Canopy, turbo engine, work light package, rubber tracks, auxiliary hydraulics, *note: inoperable, needs repairs
265	2004 FORD F-250XL SUPERDUTY PICKUP, equipped w/ Triton 5.4L engine, automatic, cruise, 2wd, long bed, tow package, odometer reading: 245,843 miles, *note: inoperable, transmission needs repairs , sn:1FTNF20L54ED63946	272	1999 CAT 236 SKID STEER LOADER, sn:4YZ00720, equipped w/ Rops Canopy, turbo engine, work light package, auxiliary hydraulics, gp loader bucket, *note: inoperable, needs repairs
266	2002 DODGE RAM 1500 CREW CAB PICKUP, equipped w/ Magnum V8 (4.7L) engine, automatic, cruise, short bed, all star bed liner, odometer reading: 175,140 miles *note: inoperable, needs repairs , sn:3D7HA18N42G171506	272A	1972 J I CASE 970 AGRI KING ROW-CROP TRACTOR, sn:8704748, equipped w/ 6 cyl diesel engine, three point hitch, pto, draw bar, dual hydraulic remote valves, 18.4-38 rear tires
267	2000 CHEVROLET 3500 SERVICE TRUCK, equipped w/ V8 engine, automatic, cruise, Stahl 8 ft service body, utility rack, high stick tube, odometer reading: 174,388 miles *note: inoperable, needs repairs , sn:1GBGC34R9YR222211	273	1997 ATHEY 7-12 FORCE-FEED LOADER, sn:740-184, equipped w/ A/C Cab, John Deere 4.5L engine, hydrostatic transmission, work light package, 10R 22.5 front tires, 14.00 R 24 rear tires, meter reading: 1,831 hrs
268	CASE 585E ROUGH TERRAIN MAST FORKLIFT, sn:JJG0212585, equipped w/ Rops Canopy, Case 4-390 engine, 5,000LB lift capability, 3 stage mast, side shift, meter reading: 4,617 hrs	274	1991 GMC TOPKICK FUEL TANKER TRUCK, equipped w/ V8 6.0L gas engine, 5x2 manual transmission, 11,000LB front axle, 19,000LB rear axle, Atlas 1600 gallon fuel tank, Smith meter register, hose reel, hose and nozzle , sn:1GDM7H1P6MJ502661
269	2002 CAT 236 SKID STEER LOADER, sn:CAT00236T4YZ05029, equipped w/ Rops Canopy, turbo engine, work light package, auxiliary hydraulics, solid tires, *note: inoperable, needs repairs	275	1987 NEW HOLLAND L785 SKID STEER LOADER, sn:715870, equipped w/ Rops Canopy, Perkins diesel engine, work light package, gp loader bucket, 12-16.5 rubber tires, meter reading: 3,319 hrs, *note: Inoperable, needs repairs
270	2005 CAT 236B SKID STEER LOADER, sn:CAT0236BCHEN3307, equipped w/ Rops Canopy, turbo engine, work light package, auxiliary hydraulics, *note: inoperable, needs repairs	276	2001 BOR-IT MODEL 36 INCH HORIZONTAL AUGER BORING MACHINE, sn:360401, equipped w/ Deutz F5L912 (82HP) engine power, 4 speed transmission, 50 ft of track, thrust cylinders (three) 6 inch bore x 36 inch stroke, Sauer Danfoss pump, Bloom winch
		277	AMERICAN AUGER 24/100 HORIZONTAL AUGER BORING MACHINE, equipped w/ Kohler K582S engine power, 3 forward/1 reverse transmission, 30 ft of track

THANK YOU FOR ATTENDING OUR AUCTIONS

4070 NC Hwy 211 E
LUMBERTON, NC 28358
(910) 739-0547

Printed:04/10/2014 09:21

www.meekinsauction.com

Catalog for Auction:ANNUAL SPRING CONTRACTORS AUCTION

Lot Num	Description	Lot Num	Description
278	MCGLOUGHLIN MCL20 HORIZONTAL AUGER BORING MACHINE, sn:1158695G, equipped w/ Wisconsin Workhorse WI-588 engine power, 3 forward/1 reverse gear transmission, 10 ft of track	288	SHOPMADE PORTABLE FUEL TRAILER, equipped w/ Gasboy electric fuel pump, hose and nozzle, aluminum tool box, single axle, ST205/75D 14 tires, *note: no title available, sold with bill of sale only
279	1998 DALIAN 1AA-DC40-19 (40 FT) CONEX STORAGE CONTAINER, sn:CPSU4715406	289	2000 INGERSOLL-RAND P185WJD AIR COMPRESSOR, sn:307784UAK221, equipped w/ Deere 4045D engine power, 185 cfm, 100 psi, trailer mounted, hose reels, meter reading: 5,359 hrs
280	2000 HAPAG-LLOYD SC40-17 (40 FT) CONEX STORAGE CONTAINER, sn:KSCF-88912	290	DIAMOND MOWER REAR PTO FLAIR MOWER, equipped w/ 90 inch cutting width capability, fits three point hitch tractors
281	1998 HAPAG-LLOYD GS40-4 (40 FT) CONEX STORAGE CONTAINER, sn:S134112	291	DIAMOND MOWER REAR PTO FLAIR MOWER, equipped w/ 90 inch cutting width capability, fits three point hitch tractors
282	THOMPSON 32HPU SUBMERSIBLE WATER PUMP, sn:32HPU63, equipped w/ John Deere 4.5L Power Tech engine, skid mounted, meter reading: 3,094 hrs	292	DIAMOND MOWER REAR PTO FLAIR MOWER, equipped w/ 90 inch cutting width capability, fits three point hitch tractors
283	AM GENERAL SKID MOUNTED POWER UNIT, equipped w/ White D298ER engine	293	DIAMOND MOWER REAR PTO FLAIR MOWER, equipped w/ 90 inch cutting width capability, fits three point hitch tractors
284	2005 VERMEER RT100 WALK BEHIND TRENCHER, sn:1VRX051E951001669, equipped w/ Honda GX390 engine, 4 ft trench bar, comes with 2005 Vermeer TLR30LD Tilt Deck trailer	294	DANDLE INDUSTRIAL REAR PTO FLAIR MOWER, equipped w/ 90 inch cutting width capability, fits three point hitch tractors
285	GORMAN-RUPP PORTABLE WATER PUMP, equipped w/ Deutz engine, 4 inch connection, suction and discharge hoses	295	2006 ALLMAND NIGHT-LITE PRO PORTABLE LIGHT PLANT, sn:0664PRO02, equipped w/ Kubota D905 engine, stabilizers, meter reading: 1,347 hrs
286	1995 VERMEER 935 BRUSH CHIPPER, sn:1VRD10152S1001740, equipped w/ Perkins engine, Auto Feed II system, 9 inch cut capability, trailer mounted, meter reading: 1,021 hrs	296	MARATHON M250 ASPHALT TACK WAGON, equipped w/ 250 gallon tank, Kohler Command Pro 6 engine pump, propane/diesel fired burner unit, spray wand, hose and reel, single axle running gear, Engager Break-Away brake system, ST205/75D 15 tires
287	2004 WOODCHUCK HYROLLER 1200G BRUSH CHIPPER, sn:1W9RH15184G200924, equipped w/ Cat 4 cyl engine, 12 inch cut capability, trailer mounted, meter reading: 1,168 hrs	297	2008 SULLAIR 185CA AIR COMPRESSOR, sn:200806130019, equipped w/ CAT C2.2 engine, 185 CFM capacity, 125 psi, trailer mounted, meter reading: 1,079 hrs

THANK YOU FOR ATTENDING OUR AUCTIONS

4070 NC Hwy 211 E
LUMBERTON, NC 28358

Printed:04/10/2014 09:21

(910) 739-0547

www.meekinsauction.com

Catalog for Auction:ANNUAL SPRING CONTRACTORS AUCTION

Lot Num	Description	Lot Num	Description
298	_____ CEDARAPIDS PAVER PARTS AND ACCESSORIES	312	_____ 2010 PRO POWER GF3-30KW GENERATOR SET, sn:1030285, equipped w/ 4 cyl diesel engine, skid mounted, 60 Hz, 120/240V rated voltage, Super Silent series, meter reading: 7 hrs
299	_____ CEDARAPIDS ASPHALT PAVER PARTS AND ACCESSORIES		
300	_____ ACCO 3 TON SHOP CRANE, sn:8103862	313	_____ WIRE ROPE LIFTING SLINGS
301	_____ DETACHABLE REAR LIFT GATE TRUCK ATTACHMENT	314	_____ WIRE ROPE LIFTING SLINGS
		315	_____ GOODYEAR 425/65R 22.5 SUPER SINGLE TRUCK TIRES (QUANTITY OF 4)
302	_____ 8 FT METAL SIDE TOOL BOX, quantity of 2		
303	_____ AM GEN MEP-017A (5KW) GENERATOR, sn:EA8060-0030, equipped w/ Wisconsin (2 cyl) gas engine, single or three phase capability, 120/240 or 120/208 capability, meter reading: 141 hrs	316	_____ JOB SAFETY TRAFFIC CAUTION CONES, equipped w/ rubber bases
		317	_____ JOB SAFETY TRAFFIC CAUTION BARRELS & CONES
304	_____ ASSORTED TRAILER PARTS AND ACCESSORIES	318	_____ JOB SAFETY TRAFFIC CAUTION BARRELS & CONES
305	_____ ASSORTED TRUCK PARTS AND ACCESSORIES	319	_____ CAL HYDRAULIC BREAKER HAMMER ATTACHMENT, fits loader backhoes, mini hydraulic excavators
306	_____ HEAVY DUTY TRUCK & TRAILER PARTS AND ACCESSORIES	320	_____ ESCO 36 INCH EXCAVATOR BUCKET
307	_____ HEAVY DUTY TRUCK & TRAILER PARTS AND ACCESSORIES	321	_____ NEPTUNE UTILITY CONTRACTOR WATER VALVE PUMP, equipped w/ meter register
308	_____ 2014 MAGNUM 4000 GOLD SERIES HOT WATER PRESSURE WASHER, sn:EK17270, equipped w/ 15HP gas engine, electric start, 4000 PSI capability, 12V diesel fired burner, 10 gallon poly fuel tank, hose, gun, wand, soap assembly, totally self contained, mobility kit, unused	322	_____ CF POWER LINE TR80 TRASH PUMP, sn:0708-8850, equipped w/ 6.5HP engine, skid mounted, 8 inch connection, accessories, unused
		323	_____ KARCHER 440G PRESSURE WASHER, sn:161794, equipped w/ Briggs & Stratton 6.0HP engine, 1900 psi, 2.2 gpm, hose and wand, mobility kit
309	_____ 2008 MULTQUIP MC-94 PORTABLE CONCRETE MORTAR MIXER, sn:AJ752999, equipped w/ Honda GX240 (8.0HP) engine, 9.0 cu ft mixing capacity	324	_____ 2005 JOHN DEERE 1810E PULL SCRAPER, sn:T81810E050134, equipped w/ 18 cu yd hauling capability, ejector series, work light package, (4) 20.5 R 25 tires
310	_____ MACK REAR END AIR LIFT TRUCK AXLE		
311	_____ DELTA 100 GALLON DIESEL FUEL TANK, sn:169765, equipped w/ Fill-Rite 20GPM 12 Volt DC Pump, hose, and nozzle		

THANK YOU FOR ATTENDING OUR AUCTIONS

4070 NC Hwy 211 E
LUMBERTON, NC 28358
(910) 739-0547

Printed:04/10/2014 09:21

www.meekinsauction.com

Catalog for Auction:ANNUAL SPRING CONTRACTORS AUCTION

Lot Num	Description	Lot Num	Description
325	2005 JOHN DEERE 1810E PULL SCRAPER, sn:T81810E050170, equipped w/ 18 cu yd hauling capability, ejector series, work light package, (4) 20.5 R 25 tires, rear hydraulic remote valves for tandem use	340	2008 CAT 4 FT (12 INCH DIAMETER) AUGER BIT ATTACHMENT
326	MILLER BIG 40 WELDER, sn:HD719049	341	PIPE HOOK LIFTING ATTACHMENT
327	HOBART 400 WELDER, equipped w/ Chrysler H-225 (6 cyl) engine	342	CAT HYDRAULIC THUMB ATTACHMENT, sn:7JW06904, fits Cat 305CCR model machines
328	MILLER BIG 40 WELDER, sn:JF930513, equipped w/ diesel engine, 120/240 capacity, meter reading: 1,999 hrs	343	CROSS-TECH BRUSH WOLF 4200X BRUSH CUTTER EXCAVATOR ATTACHMENT, sn:23208, equipped w/ 42 inch deck, Parker hydraulic gearbox, fits Cat 305CCR size machines
329	STONE XN650R01 JUMPING JACK TAMP & STONE X1728R JUMPING JACK TAMP	344	2007 CAT 24 INCH EXCAVATOR BUCKET, sn:HD6111453, fits Cat 305CCR model machines
330	BOMAG BT60 JUMPING JACK TAMP, JUMPING JACK TAMP	345	2007 CAT 20 INCH (0.13 YD) EXCAVATOR BUCKET, sn:HD80400211, fits Cat 305CCR model machines
331	INGERSOLL RAND RX-65 JUMPING JACK TAMP, MULTIQUIP INC. 80L JUMPING JACK TAMP	346	2007 CAT 12 INCH EXCAVATOR BUCKET, sn:HD6010110, fits Cat 305CCR model machines
332	CH&E 2523W WATER PUMP, sn:2523P110, 3 inch connections	347	CAT 48 INCH DITCH CLEANING LOADER BACKHOE BUCKET
333	STONE XN650R01 JUMPING JACK TAMP	348	D & E MFG 20 INCH EXCAVATOR BUCKET
334	SET OF 11 R 24.5 TIRES, quantity of 4	349	2007 CAT 36 INCH (0.28 YD) EXCAVATOR BUCKET, sn:HD71100193, fits Cat 305CCR model machines
335	SET OF 11 R 24.5 TIRES, quantity of 4	350	2007 CAT 36 INCH DITCH CLEANING EXCAVATOR BUCKET, fits Cat 305CCR model machines
336	SET OF 11 R 24.5 TIRES, quantity of 4	351	2007 CAT 52 INCH DITCH CLEANING EXCAVATOR BUCKET, sn:HCL065396, fits Cat 305CCR model machines
337	BOBCAT 225G PLUS SERIES WELDER GENERATOR, equipped w/ Onan Performer 16HP engine, skid mounted, 120/240V outlets, CC/CV AC/DC welder, 8000 watt capability, meter reading: 1,436 hrs	352	PUNGO 60 INCH DITCH CLEANING EXCAVATOR BUCKET, sn:121
338	2008 CAT A19B AUGER ATTACHMENT, sn:SMR07779, hydraulic operation, fits mini hydraulic excavators	353	ESCO 36 INCH EXCAVATOR BUCKET
339	2008 CAT 4 FT (36 INCH DIAMETER) AUGER BIT ATTACHMENT		

THANK YOU FOR ATTENDING OUR AUCTIONS

4070 NC Hwy 211 E
LUMBERTON, NC 28358
(910) 739-0547

Printed:04/10/2014 09:21

www.meekinsauction.com

Catalog for Auction:ANNUAL SPRING CONTRACTORS AUCTION

Lot Num	Description	Lot Num	Description
354	HENSELY 1.71 CU YD (48 INCH) EXCAVATOR BUCKET, sn:27888, fits Komatsu PC300LC model machines	365	CID ATTACHMENT CO SKID STEER BRUSH GRAPPLE, equipped w/ 72 inch working width, dual hydraulic cylinders, heavy duty frame
355	USA ATTACHMENT COMPANY DR92 ROOT RAKE ATTACHMENT, sn:0610, equipped w/ 92 inch working width, fits crawler tractors	366	WILDKAT 74 INCH SKID STEER BRUSH GRAPPLE ATTACHMENT, equipped w/ heavy duty frame, dual hydraulic cylinders
356	HENSLEY 56 INCH EXCAVATOR BUCKET	367	SHAYER MFG COMPANY HD8 HYDRAULIC POST DRIVER ATTACHMENT, sn:50244, equipped w/ hydraulic control levers, fits three point hitch tractors and skid steer loaders
357	HENSLEY 1.45 CU YD (42 INCH) EXCAVATOR BUCKET, sn:21377, fits Komatsu model machines	368	2014 VERSATECH SKID STEER QUICK TACH MOUNT PLATE (UNUSED)
358	SKID STEER 46 INCH PALLET FORKS ATTACHMENT	369	2014 VERSATECH SKID STEER QUICK TACH MOUNT PLATE (UNUSED)
359	2014 MAGNUM 4000 GOLD SERIES HOT WATER PRESSURE WASHER, sn:EK17268, equipped w/ 15HP gas engine, electric start, 4000 PSI capability, 12V diesel fired burner, 10 gallon poly fuel tank, hose, gun, wand, soap assembly, totally self contained, mobility kit, unused	370	2014 VERSATECH SKID STEER QUICK TACH MOUNT PLATE (UNUSED)
360	2013 TRUEMAX TM90 VIBRATORY PLATE COMPACTOR, sn:13011012, equipped w/ 6.5HP gas engine, 30CM compaction depth, water tank accessory, unused	371	2014 VERSATECH SKID STEER QUICK TACH MOUNT PLATE (UNUSED)
361	2013 TRUEMAX TM90 VIBRATORY PLATE COMPACTOR, sn:13011132, equipped w/ 6.5HP gas engine, 30CM compaction depth, water tank accessory, unused	372	2014 VERSATECH SKID STEER QUICK TACH MOUNT PLATE (UNUSED)
362	CAT SKID STEER PALLET FORKS ATTACHMENT	373	2014 VERSATECH SKID STEER QUICK TACH MOUNT PLATE (UNUSED)
363	BRUSHMONSTER BRUSH MOWER ATTACHMENT, equipped w/ 60 inch deck, push bar, low flow hydraulic controls, fits skid steer loaders	374	2014 VERSATECH SKID STEER QUICK TACH MOUNT PLATE (UNUSED)
364	2005 CAT PR172 POWER RAKE ATTACHMENT, sn:RED00207, equipped w/ 72 inch working width, hydraulic operation, carbide teeth, quick attach, guide wheels, fits skid steer loaders	375	2014 VERSATECH SKID STEER QUICK TACH MOUNT PLATE (UNUSED)
		376	2014 VERSATECH SKID STEER QUICK TACH MOUNT PLATE (UNUSED)
		377	2014 VERSATECH SKID STEER QUICK TACH MOUNT PLATE (UNUSED)
		378	2014 VERSATECH HD HAY SPEAR ATTACHMENT, equipped w/ single tine, 1800LBS weight capacity, universal mount, unused, fits skid steer loaders

THANK YOU FOR ATTENDING OUR AUCTIONS

4070 NC Hwy 211 E
LUMBERTON, NC 28358
(910) 739-0547

Printed:04/10/2014 09:21

www.meekinsauction.com

Catalog for Auction:ANNUAL SPRING CONTRACTORS AUCTION

Lot Num	Description	Lot Num	Description
379	2014 VERSATECH HD HAY SPEAR ATTACHMENT, equipped w/ single tine, 1800LBS weight capacity, universal mount, unused, fits skid steer loaders	391	2014 VERSATECH SKID STEER TREE BOOM ATTACHMENT, universal mount, 2500LB capacity rating, unused
380	2014 VERSATECH HD HAY SPEAR ATTACHMENT, equipped w/ single tine, 1800LBS weight capacity, universal mount, unused, fits skid steer loaders	392	2014 VERSATECH SKID STEER PALLET FORKS, equipped w/ 42 inch forks, universal mount, unused
381	2014 VERSATECH 72 INCH SKID STEER ROCK BUCKET (UNUSED)	393	2014 VERSATECH 72 INCH SKID STEER SMOOTH LOADER BUCKET (UNUSED)
382	2014 VERSATECH 72 INCH SKID STEER ROCK BUCKET (UNUSED)	394	2014 VERSATECH 66 INCH SKID STEER SMOOTH LOADER BUCKET (UNUSED)
383	2014 VERSATECH HD HAY SPEAR ATTACHMENT, equipped w/ single tine, 1800LBS weight capacity, universal mount, unused, fits skid steer loaders	395	2014 VERSATECH 60 INCH SKID STEER SMOOTH LOADER BUCKET (UNUSED)
384	2014 VERSATECH SKID STEER TREE BOOM ATTACHMENT, universal mount, 2500LB capacity rating, unused	396	2014 VERSATECH SKID STEER STUMP TRENCH BUCKET ATTACHMENT (UNUSED)
385	2014 VERSATECH SKID STEER PALLET FORKS, equipped w/ 42 inch forks, universal mount, unused	397	2014 VERSATECH SKID STEER STUMP TRENCH BUCKET ATTACHMENT (UNUSED)
386	2014 VERSATECH SKID STEER PALLET FORKS, equipped w/ 42 inch forks, universal mount, unused	398	2014 VERSATECH 60 INCH SKID STEER SMOOTH LOADER BUCKET (UNUSED)
387	2014 VERSATECH SKID STEER PALLET FORKS, equipped w/ 42 inch forks, universal mount, unused	399	2014 VERSATECH 66 INCH SKID STEER SMOOTH LOADER BUCKET (UNUSED)
388	2014 VERSATECH SKID STEER PALLET FORKS, equipped w/ 42 inch forks, universal mount, unused	400	2014 VERSATECH 72 INCH SKID STEER SMOOTH LOADER BUCKET (UNUSED)
389	2014 VERSATECH SKID STEER PALLET FORKS, equipped w/ 42 inch forks, universal mount, unused	401	2014 VERSATECH 66 INCH SKID STEER GRAPPLE BUCKET, equipped w/ single hydraulic cylinder, universal mount, unused
390	2014 EXCALIBUR X36 UNIVERSAL MANUAL THUMB ATTACHMENT, fits 12,000LB to 16,000LB hydraulic excavators, unused	402	2014 VERSATECH 66 INCH SKID STEER GRAPPLE BUCKET, equipped w/ single hydraulic cylinder, universal mount, unused
		403	2014 VERSATECH 66 INCH BRUSH GRAPPLE, equipped w/ single hydraulic cylinder, unused, fits skid steer loaders
		404	2014 VERSATECH 66 INCH BRUSH GRAPPLE, equipped w/ single hydraulic cylinder, unused, fits skid steer loaders

THANK YOU FOR ATTENDING OUR AUCTIONS

4070 NC Hwy 211 E
LUMBERTON, NC 28358
(910) 739-0547

Printed:04/10/2014 09:21

www.meekinsauction.com

Catalog for Auction:ANNUAL SPRING CONTRACTORS AUCTION

Lot Num	Description	Lot Num	Description
405	2013 VERSATECH SKID STEER QUICK TACH MOUNT PLATE (UNUSED)	417	2014 VERSATECH SKID STEER TREE BOOM ATTACHMENT, universal mount, unused
406	2013 VERSATECH SKID STEER QUICK TACH MOUNT PLATE (UNUSED)	418	2013 VERSATECH SKID STEER TREE BOOM ATTACHMENT, universal mount, unused
407	2013 VERSATECH SKID STEER QUICK TACH MOUNT PLATE (UNUSED)	419	2013 VERSATECH SKID STEER STUMP BUCKET (UNUSED)
408	2014 VERSATECH 72HD BRUSH GRAPPLE, equipped w/ 72 inch working width, dual hyd cylinders, unused, fits skid steer loaders	420	2013 VERSATECH SKID STEER STUMP BUCKET (UNUSED)
409	2014 VERSATECH 72HD BRUSH GRAPPLE, equipped w/ 72 inch working width, dual hyd cylinders, unused, fits skid steer loaders	421	2014 VERSATECH SKID STEER TREE BOOM ATTACHMENT, universal mount, unused
410	2013 VERSATECH HD HAY SPEAR, equipped w/ single tine, universal mount, unused, fits skid steer loaders	422	2013 VERSATECH 72 INCH SKID STEER SMOOTH LOADER BUCKET (UNUSED)
411	2013 VERSATECH HD HAY SPEAR, equipped w/ single tine, universal mount, unused, fits skid steer loaders	423	2013 VERSATECH 72 INCH SKID STEER SMOOTH LOADER BUCKET (UNUSED)
412	2013 VERSATECH HD HAY SPEAR, equipped w/ single tine, universal mount, unused, fits skid steer loaders	424	2013 VERSATECH 66 INCH SKID STEER SMOOTH LOADER BUCKET (UNUSED)
413	2013 EXCALIBUR X36 UNIVERSAL MANUAL THUMB ATTACHMENT, fits 12,000LB to 16,000LB hydraulic excavators, unused	425	2013 VERSATECH 60 INCH SKID STEER SMOOTH LOADER BUCKET (UNUSED)
414	2013 EXCALIBUR X36 UNIVERSAL MANUAL THUMB ATTACHMENT, fits 12,000LB to 16,000LB hydraulic excavators, unused	426	2012 SEC General Purpose Wheel Loader Bucket, equipped w/ 125 inch working width capability, unused, fits Cat 966G and Cat 966H Wheel Loaders
415	2013 VERSATECH SKID STEER TREE BOOM ATTACHMENT, universal mount, unused	427	2012 SEC Excavator Long Extension Stick, equipped w/ 42 inch bucket, 56 ft reach capability, fits 60,000LB Hydraulic Excavators, unused attachment
416	2014 EXCALIBUR X36 UNIVERSAL MANUAL THUMB ATTACHMENT, fits 12,000LB to 16,000LB hydraulic excavators, unused	428	2012 SEC Excavator Long Extension Stick, equipped w/ 46 inch bucket, able to reach 56 ft, fits Hitachi ZX330, Deere 330, Hitachi EX300LC-2 to Hitachi EX300LC-5 and other model hydraulic excavators, unused attachment

THANK YOU FOR ATTENDING OUR AUCTIONS

4070 NC Hwy 211 E
LUMBERTON, NC 28358
(910) 739-0547

Printed:04/10/2014 09:21

www.meekinsauction.com

Catalog for Auction:ANNUAL SPRING CONTRACTORS AUCTION

Lot Num	Description	Lot Num	Description
429	2012 SEC Excavator Long Extension Stick, equipped w/ 42 inch bucket, able to reach 48 ft, fits Komatsu PC200LC-5 to Komatsu PC200LC-8 Hydraulic Excavators, unused attachment	439	2012 SEC 80 Inch Ditch Cleaning Excavator Bucket, fits Cat 345D and Cat 345C hydraulic excavators, unused attachment
430	2012 SEC Excavator Long Extension Stick, equipped w/ 42 inch bucket, fits Kobelco SK330, Komatsu PC300, and other model hydraulic excavators, unused attachment	440	2012 SEC 83 Inch Hydraulic Tilting Ditch Cleaning Excavator Bucket, fits Cat 330C and Cat 330B hydraulic excavators, unused attachment
431	2012 SEC Excavator Long Extension Stick, equipped w/ 45 inch bucket, 56 ft reach capability, fits 60,000LB Hydraulic Excavators, unused attachment	441	2012 SEC 80 Inch Ditch Cleaning Excavator Bucket, fits Komatsu PC300, Kobelco SK330, and other model hydraulic excavators, unused attachment
432	2012 SEC Excavator Long Extension Stick, equipped w/ 45 inch bucket, 26 ft reach capability, fits Hitachi ZX450, Deere 450, and other model hydraulic excavators, unused attachment	442	2012 SEC 90 Inch Ditch Cleaning Excavator Bucket, fits Hitachi ZX450, Deere 450, and other model hydraulic excavators, unused attachment
433	2012 SEC 80 Inch Hydraulic Tilting Ditch Cleaning Excavator Bucket, fits Cat 325C, Cat 325B, and other model hydraulic excavators, unused attachment	443	2012 SEC 90 Inch Ditch Cleaning Excavator Bucket, fits Komatsu PC450 and Komatsu PC400 hydraulic excavators, unused attachment
434	2012 SEC Concrete Crusher Excavator Attachment, fits Komatsu PC300, Deere 270, Hitachi ZX270, and other model hydraulic excavators, unused	444	2012 SEC 68 Inch Excavator Digging Bucket, unused, fits Hitachi ZX450, Deere 450, and other model hydraulic excavators
435	2012 SEC Quick Attach 60 Inch Pallet Forks, unused, fits Cat IT24, Cat IT28, Cat 930G, and Cat 930H wheel loaders	445	2012 SEC 68 Inch Excavator Digging Bucket, unused, fits Komatsu PC400 and Komatsu PC450 hydraulic excavators
436	2012 SEC Excavator Grapple Attachment, unused, fits Hitachi ZX350, Deere 330, and other model hydraulic excavators	446	2012 SEC 54 Inch Excavator Digging Bucket, fits Hitachi ZX200, Deere 200, and other model hydraulic excavators, unused attachment
437	2012 SEC 42 Inch Excavator Clam Shell Bucket, unused, fits Komatsu PC200, Cat 320, and other model hydraulic excavators	447	2012 SEC 68 Inch Excavator Digging Bucket, fits Komatsu PC300LC hydraulic excavators, unused attachment
438	2012 SEC 42 Inch Excavator Clam Shell Bucket, fits Komatsu PC200, Cat 320, and other model hydraulic excavators, unused attachment	448	2012 SEC 65 Inch Excavator Digging Bucket, fits Komatsu PC200, Kobelco SK330, other model hydraulic excavators, unused attachment
		449	2012 SEC 60 Inch Excavator Digging Bucket, fits Hitachi ZX200, Deere 690, other model hydraulic excavators, unused attachment

THANK YOU FOR ATTENDING OUR AUCTIONS

4070 NC Hwy 211 E
LUMBERTON, NC 28358
(910) 739-0547

Printed:04/10/2014 09:21

www.meekinsauction.com

Catalog for Auction:ANNUAL SPRING CONTRACTORS AUCTION

Lot Num	Description	Lot Num	Description
450	2012 SEC 60 Inch Excavator Digging Bucket, fits Cat 320, Komatsu PC200, other model hydraulic excavators, unused attachment	464	WILDKAT HEAVY DUTY SKID STEER MOUNT PLATE (UNUSED)
451	2012 SEC 24 Inch Excavator Digging Bucket, unused, fits Cat 320, Hitachi ZX200, and other model hydraulic excavators	465	WILDKAT HEAVY DUTY SKID STEER MOUNT PLATE (UNUSED)
452	2012 SEC 58 Inch Ditch Cleaning Excavator Bucket, fits Cat 307, Hitachi EX120, Hitachi EX100, Kobelco SK120, and other model hydraulic excavators, unused attachment	466	WILDKAT SKID STEER 3PT HITCH ATTACHMENT (UNUSED)
453	2012 SEC 48 Inch Skeleton Excavator Digging Bucket, fits Cat 320, Komatsu PC200, other model hydraulic excavators, unused attachment	467	WILDKAT SKID STEER 48 INCH PALLET FORKS (UNUSED)
454	WILDKAT SKID STEER BRUSH CUTTER, equipped w/ 72 inch deck, push bar, safety chains, unused	468	WILDKAT 78 INCH SKID STEER GRAPPLE RAKE (UNUSED)
455	WILDKAT SKID STEER BRUSH CUTTER, equipped w/ 72 inch deck, push bar, safety chains, unused	469	WILDKAT SKID STEER 48 INCH PALLET FORKS (UNUSED)
456	WILDKAT HYDRAULIC SHEAR SKID STEER LOADER ATTACHMENT (UNUSED)	470	WILDKAT SKID STEER BRUSH CUTTER, equipped w/ 72 inch deck, push bar, safety chains, unused
457	WILDKAT HYDRAULIC SHEAR SKID STEER LOADER ATTACHMENT (UNUSED)	471	WILDKAT 64 INCH SKID STEER GRAPPLE RAKE (UNUSED)
458	WILDKAT 72 INCH SKID STEER GRAPPLE BUCKET (UNUSED)	472	WILDKAT HEAVY DUTY SKID STEER MOUNT PLATE (UNUSED)
459	WILDKAT 72 INCH SKID STEER BRUSH GRAPPLE (UNUSED)	473	WILDKAT HEAVY DUTY SKID STEER MOUNT PLATE (UNUSED)
460	WILKKAT 80 INCH SKID STEER BRUSH GRAPPLE (UNUSED)	474	WILDKAT 74 INCH SKID STEER GRAPPLE RAKE (UNUSED)
461	WILDKAT SKID STEER 48 INCH PALLET FORKS (UNUSED)	475	WILDKAT SKID STEER BACKHOE ATTACHMENT (UNUSED)
462	WILDKAT 72 INCH SKID STEER BRUSH GRAPPLE (UNUSED)	476	WILDKAT 48 INCH SKID STEER BRUSH GRAPPLE (UNUSED)
463	WILDKAT 6 FT SKID STEER ANGLE SWEEPER BROOM ATTACHMENT (UNUSED)	477	WILDKAT 48 INCH SKID STEER BRUSH GRAPPLE (UNUSED)
		478	WILDKAT SKID STEER 48 INCH PALLET FORKS (UNUSED)
		479	WILDKAT 78 INCH SKID STEER SNOW AND MULCH LOADER BUCKET (UNUSED)

THANK YOU FOR ATTENDING OUR AUCTIONS

4070 NC Hwy 211 E
LUMBERTON, NC 28358
(910) 739-0547

Printed:04/10/2014 09:21

www.meekinsauction.com

Catalog for Auction:ANNUAL SPRING CONTRACTORS AUCTION

Lot Num	Description	Lot Num	Description
480	WILDKAT SKID STEER STUMP TRENCH GRAPPLE (UNUSED)	511	PITTSBURG AUTOMOTIVE 12 Volt, 100 psi High Volume Air Compressor
481	WILDKAT SKID STEER STUMP TRENCH GRAPPLE (UNUSED)	512	CHICAGO ELECTRIC 1600 Watt Heavy Duty Heat Gun
482	WILDKAT 84 INCH SKID STEER SNOW AND MULCH LOADER BUCKET (UNUSED)	513	CENTRAL PNEUMATIC 1/2 Inch Composite Air Impact Wrench
483	WILDKAT 80 INCH SKID STEER SNOW AND MULCH LOADER BUCKET (UNUSED)	514	DRILL MASTER 120 Volt, 1/2 Inch Hammer Drill
484	WILDKAT 72 INCH SKID STEER SMOOTH LOADER BUCKET (UNUSED)	515	DRILL MASTER 7 Inch Polisher/Sander
485	WILDKAT 78 INCH SKID STEER SMOOTH LOADER BUCKET (UNUSED)	516	CENTRAL PNEUMATIC Front Exhaust Air Angle Disc Grinder
486	WILDKAT 84 INCH SKID STEER SMOOTH LOADER BUCKET (UNUSED)	517	CEN TECH 3-n-1 Portable Power Pack
500	DRILL MASTER 4 1/2 Inch Angle Grinder	518	CENTRAL PNEUMATIC 3 Gallon, 100 psi Air Compressor
501	CHICAGO ELECTRIC 10 Inch Random Orbit Polisher/Waxer	519	CEN TECH 3-n-1 Portable Power Pack
502	CENTRAL PNEUMATIC Air Palm Nailer	520	CENTRAL PNEUMATIC 3 Gallon, 1/3 HP, 100 PSI Air Compressor
503	CENTRAL PNEUMATIC Mini Air Compressor w/Airbrush & Hose	521	CEMTECH Battery Charger
504	CHICAGO ELECTRIC 9.6 Volt Cordless Variable Speed Rotary Tool Kit	522	CENTRAL PNEUMATIC 3 Gallon, 100 PSI Air Compressor
505	CHICAGO ELECTRIC 1200/2400 Watt Power Inverter	523	PITTSBURG AUTOMOTIVE 6 Ton, Heavy Duty Jack Stands
506	PITTSBURG AUTOMOTIVE 12 Volt, 100psi High Volume Air Compress	524	CEN TECH 5-n-1 Portable Power Pack
507	CHICAGO ELECTRIC 18 Volt Cordless Drill/Driver	525	CHICAGO ELECTRIC 3 3/8 Inch Toe-Kick Saw
508	DRILL MASTER 18 Volt Cordless 3/8 inch Drill & Flashlight Kit	526	CHICAGO ELECTRIC 5-N-1 Portable Power Pack
509	CENTRAL PNEUMATIC Mini Air Compressor w/Air Brush & Hose	527	DRILL MASTER 4 1/2 Inch Angle Grinder
510	CHICAGO ELECTRIC Orbital Jigsaw	528	CHICAGO ELECTRIC Electric Chainsaw Sharpener
		529	CHICAGO ELECTRIC 7 1/4 Inch Circular Saw w/Laser Guide System

THANK YOU FOR ATTENDING OUR AUCTIONS

4070 NC Hwy 211 E
LUMBERTON, NC 28358
(910) 739-0547

Printed:04/10/2014 09:21

www.meekinsauction.com

Catalog for Auction:ANNUAL SPRING CONTRACTORS AUCTION

Lot Num	Description	Lot Num	Description
530	_____CEN TECH Battery Charger	549	_____CEN TECH 3-n-1 Portable Power Pack
531	_____CHICAGO ELECTRIC Battery Load Tester	550	_____CHICAGO ELECTRIC 1/2 Inch Variable Speed Reversible Heavy Duty Drill
532	_____CHICAGO ELECTRIC 5-n-1 Portable Power Pack	551	_____CHICAGO ELECTRIC Oscillating Multifunction Power Tool
533	_____CHICAGO ELECTRIC 5-n-1 Portable Power Pack	552	_____CEN TECH Battery Charger
534	_____PITTSBURG AUTOMOTIVE 2 Ton Compact Trolley Jack	553	_____CHICAGO ELECTRIC 1/2 Inch Variable Speed Reversible Hammer Drill
535	_____CHICAGO ELECTRIC 12 Volt Lithium-Ion Multifunction Power Tool	554	_____CEN TECH Battery Charger
536	_____CEN TECH 5-n-1 Portable Power Pack	555	_____CEN TECH 3-n-1 Portable Power Pack
537	_____CHICAGO ELECTRIC Oscillating Multifunction Power Tool	556	_____CHICAGO ELECTRIC 18 Volt Cordless Hammer Drill
538	_____CEN TECH 3-n-1 Portable Power Pack	557	_____CHICAGO ELECTRIC 18 Volt Ni-Cd Quick Charger
539	_____CHICAGO ELECTRIC 6 Amp Riciprocating Saw	558	_____CEN TECH Battery Charger
540	_____CHICAGO ELECTRIC Oscillating Multifunction Power Tool	559	_____HAULMASTER 3,000lb Electric Winch
541	_____PITTSBURG AUTOMOTIVE 12 Volt, 100 PSI High Volume Air Compressor	560	_____CENTRAL PNEUMATIC 7 Inch Vertical Air Polisher/Sander
542	_____CHICAGO ELECTRIC Double Cut Saw	561	_____CHICAGO ELECTRIC 9 Inch Heavy Duty Angle Grinder
543	_____CEN TECH Battery Charger	562	_____CEN TECH 3-n-1 Portable Power Pack
544	_____CENTRAL MACHINERY 10 Amp, 12 Volt Demolition Hammer	563	_____CEN TECH 3-n-1 Portable Power Pack
545	_____CHICAGO ELECTRIC 6 Amp Reciprocating Saw	564	_____CEN TECH 3-n-1 Portable Power Pack
546	_____CHICAGO ELECTRIC 1/2 Inch Variable Speed Reversible Heavy Duty Drill	565	_____BADLAND WINCHES 6,000lb Off-Road Vehicle Winch
547	_____CENTRAL MACHINERY 4 Inch x 36 Inch Belt & 6 Inch Disc Sander	566	_____CEN TECH Battery Charger/Engine Starter
548	_____CEN TECH Heavy Duty 6/12 Volt Charger w/Engine Start	567	_____CHICAGO ELECTRIC Battery Charger/Engine Starter
		568	_____CENTRAL PNEUMATIC 1 1/2 Gallon Texture Spray Gun

THANK YOU FOR ATTENDING OUR AUCTIONS

4070 NC Hwy 211 E
LUMBERTON, NC 28358

Printed:04/10/2014 09:21

(910) 739-0547

www.meekinsauction.com

Catalog for Auction:ANNUAL SPRING CONTRACTORS AUCTION

Lot Num	Description	Lot Num	Description
569	CHICAGO ELECTRIC 1/2 Inch Hammer Drill	588	PACIFIC HYDROSTAR Portable Utility Pump
570	CENTRAL PNEUMATIC Air Angle Disc Grinder	589	CEN TECH 4-n-1 Portable Power Pack
571	BADLAND WINCHES 2,000lb Atv/Utility Winch	590	CENTRAL PNEUMATIC Air Die Grinder Kit
572	CENTRAL PNEUMATIC 4 Inch x 36 Inch Belt & 6 Inch Disc Sander	591	CEN TECH 4-n-1 Portable Power Pack
573	CEN TECH Battery Charger	592	CHICAGO ELECTRIC Compact 2-Speed 1/2 Inch Right Angle Drill
574	DRILL MASTER 4 1/2 Inch Angle Grinder	593	CEN TECH 4-n-1 Portable Power Pack
575	DRILL MASTER 4 1/2 Inch Angle Grinder	594	PITTSBURG AUTOMOTIVE Double Flaring Tool Kit
576	CHICAGO ELECTRIC Oscillating Multifunction Power Tool	595	CHICAGO ELECTRIC 1/2 Inch Variable Speed Reversible Hammer Drill
577	DRILL MASTER Oscillating Multifunction Power Tool	596	CHICAGO ELECTRIC 5 Inch Palm Sander
578	CEN TECH Power Inverter	597	CEN TECH 5-n-1 Portable Power Pack
579	DRILL MASTER Heavy Duty Drill Power Pump	598	CEN TECH 4-n-1 Portable Power Pack
580	CHICAGO ELECTRIC 1 1/8 Inch Variable Speed SDS Rotary Hammer	599	CENTRAL MACHINERY 1 Inch x 30 Inch Belt Sander
581	CHICAGO ELECTRIC Palm Sander	600	CHICAGO ELECTRIC 5-n-1 Portable Power Pack
582	CHICAGO ELECTRIC Heavy Duty Hot Knife	601	CHICAGO ELECTRIC 12 Volt Emergency Impact Wrench
583	CHICAGO ELECTRIC 9.6 Volt Cordless Variable Speed Rotary Tool Kit	602	CENTRAL PNEUMATIC Air Inline Sander
584	CHICAGO ELECTRIC 6 Amp Reciprocating Saw	603	CHICAGO ELECTRIC Dual Drum Rotary Rock Tumbler
585	CHICAGO ELECTRIC Variable Speed Oscillating Multifunction Power Tool	604	CHICAGO ELECTRIC TIG/MMA Inverter Welding Machine w/Digital Readout
586	CENTRAL PNEUMATIC 1/2 Inch Air Impact Wrench	605	CEN TECH 5-n-1 Portable Power Pack
587	DRILL MASTER 1500 Watt Dual Temperature Heat Gun	606	CENTRAL PNEUMATIC 2 HP, 29 Gallon, 150 PSI Air Compressor
		607	CENTRAL PNEUMATIC 2.5 HP, 21 Gallon, 125 PSI Air Compressor

THANK YOU FOR ATTENDING OUR AUCTIONS

4070 NC Hwy 211 E
LUMBERTON, NC 28358

Printed:04/10/2014 09:21

(910) 739-0547

www.meekinsauction.com

Catalog for Auction:ANNUAL SPRING CONTRACTORS AUCTION

Lot Num	Description	Lot Num	Description
608	CENTRAL PNEUMATIC 2 HP, 8 Gallon, 125 PSI Air Compressor	625	CENTRAL PNEUMATIC 3 Gallon Oilless Pancake Air Compressor
609	CENTRAL PNEUMATIC 3 Gallon Oilless Pancake Air Compressor	626	CENTRAL PNEUMATIC 2 HP, 26 Gallon, 150 PSI Air Compressor
610	CENTRAL PNEUMATIC 2 HP, 4 Gallon, 125 PSI Air Compressor	627	CENTRAL PNEUMATIC 1.5 HP, 6 Gallon, 150 PSI Air Compressor
611	CENTRAL PNEUMATIC 2.5 HP, 21 Gallon, 125 PSI Air Compressor	628	CENTRAL PNEUMATIC 1.5 HP, 6 Gallon, 150 PSI Air Compressor
612	CENTRAL PNEUMATIC 2.5 HP, 21 Gallon, 125 PSI Air Compressor	629	CENTRAL PNEUMATIC 3 Gallon Oilless Air Compressor
613	CENTRAL PNEUMATIC 2 HP, 17 Gallon, 150 PSI, Air Compressor	630	CENTRAL PNEUMATIC 1.5 HP, 6 Gallon, 150 PSI Air Compressor
614	CENTRAL PNEUMATIC 3 Gallon Oilless Pancake Air Compressor	631	CENTRAL PNEUMATIC 3 Gallon Oilless Air Compressor
615	CENTRAL PNEUMATIC 6 Gallon Professional Oilless Air Compressor	632	CENTRAL PNEUMATIC 1.5 HP, 6 Gallon, 150 PSI Air Compressor
616	CENTRAL PNEUMATIC 6 Gallon Professional Oilless Air Compressor	633	CENTRAL PNEUMATIC 3 Gallon Oilless Pancake Air Compressor
617	CENTRAL PNEUMATIC 6 Gallon Professional Oilless Air Compressor	634	CENTRAL PNEUMATIC 1.5 HP, 6 Gallon, 150 PSI Air Compressor
618	CENTRAL PNEUMATIC 3 Gallon Oilless Pancake Air Compressor	635	CENTRAL PNEUMATIC 3 Gallon Oilless Pancake Air Compressor
619	CENTRAL PNEUMATIC 3 Gallon Oilless Pancake Air Compressor	636	CENTRAL PNEUMATIC 3 Gallon Oilless Air Compressor
620	CENTRAL PNEUMATIC 3 Gallon Oilless Pancake Air Compressor	637	CENTRAL PNEUMATIC 3 Gallon Oilless Air Compressor
621	CENTRAL PNEUMATIC 1.5 HP, 6 Gallon, 150 PSI Air Compressor	638	CENTRAL PNEUMATIC 3 Gallon Oilless Air Compressor
622	CENTRAL PNEUMATIC 3 Gallon Oilless Air Compressor	639	CENTRAL PNEUMATIC 3 Gallon Oilless Pancake Air Compressor
623	CENTRAL PNEUMATIC 1.5 HP, 6 Gallon, 150 PSI Air Compressor	640	CENTRAL PNEUMATIC 3 Gallon Oilless Pancake Air Compressor
624	CENTRAL PNEUMATIC 3 Gallon Oilless Pancake Air Compressor	641	CENTRAL PNEUMATIC 1.5 HP, 6 Gallon, 150 PSI Air Compressor

THANK YOU FOR ATTENDING OUR AUCTIONS

Catalog for Auction:ANNUAL SPRING CONTRACTORS AUCTION

Lot Num	Description	Lot Num	Description
642	CENTRAL PNEUMATIC 3 Gallon Oilless Pancake Air Compressor	660	CENTRAL PNEUMATIC 3 Gallon Oilless Pancake Air Compressor
643	CENTRAL PNEUMATIC 3 Gallon Oilless Pancake Air Compressor	661	CENTRAL PNEUMATIC 1.5 HP, 6 Gallon, 150 PSI, Air Compressor
644	CENTRAL PNEUMATIC 3 Gallon Oilless Air Compressor	662	CENTRAL PNEUMATIC 3 Gallon Oilless Pancake Air Compressor
645	PREDATOR 212cc gas engine	663	CENTRAL PNEUMATIC 3 Gallon Oilless Air Compressor
646	STORM CAT 900 Watt Portable Generator	664	CENTRAL PNEUMATIC 1.5 HP, 6 Gallon, 150 PSI, Air Compressor
647	CEN TECH Heavy Duty Charger	665	STORM CAT 900 Watt Portable Generator
648	CHICAGO ELECTRIC Power Coating System	666	CEN TECH Heavy Duty 6/12 Volt Charger w/Engine Start
649	PREDATOR 212 cc Gas Engine	667	CEN TECH 4-n-1 Portable Power Pack
650	CENTRAL PNEUMATIC 3 Gallon Oilless Pancake Air Compressor	668	PITTSBURG AUTOMOTIVE 3 CFM Two Stage Vacuum Pump
651	CENTRAL PNEUMATIC 3 Gallon Oilless Air Compressor	669	CENTRAL FORGE Three-in-One Tile Cutter
652	CENTRAL PNEUMATIC 3 Gallon Oilless Pancake Air Compressor	670	DRILL MASTER 7 Inch Polisher/Sander
653	CENTRAL PNEUMATIC 3 Gallon Oilless Pancake Air Compressor	671	CHICAGO ELECTRIC Compact 2-Speed 1/2 Inch Right Angle Drill
654	CENTRAL PNEUMATIC 1.5 HP, 6 Gallon, 150 PSI Air Compressor	672	CHICAGO ELECTRIC 7 Inch Portable Wet Cutting Tile Saw
655	CENTRAL PNEUMATIC 3 Gallon Oilless Pancake Air Compressor	673	KRAUSE & BECKER 5/8 HP Airless Paint Sprayer
656	CENTRAL PNEUMATIC 3 Gallon Oilless Pancake Air Compressor	674	CEN TECH Battery Charger
657	CENTRAL PNEUMATIC 3 Gallon Oilless Pancake Air Compressor	675	CHICAGO ELECTRIC 5-n-1 Portable Power Pack
658	CENTRAL PNEUMATIC 3 Gallon Oilless Pancake Air Compressor	676	CHICAGO ELECTRIC Power Coating System
659	CENTRAL PNEUMATIC 3 Gallon Oilless Pancake Air Compressor	677	CEN TECH 4-n-1 Portable Power Pack
		678	CEN TECH Battery Charger/Engine Starter

THANK YOU FOR ATTENDING OUR AUCTIONS

4070 NC Hwy 211 E
LUMBERTON, NC 28358
(910) 739-0547

Printed:04/10/2014 09:21

www.meekinsauction.com

Catalog for Auction:ANNUAL SPRING CONTRACTORS AUCTION

Lot Num	Description	Lot Num	Description
679	CEN TECH 4-n-1 Portable Power Pack	696	CENTRAL MACHINERY 1 Inch x 30 Inch Belt Sander
680	CHICAGO ELECTRIC 1/2 Inch Electric Impact Wrench	697	CENTRAL PNEUMATIC 2.5 HP, 21 Gallon, 125 PSI Air Compressor
681	DRILL MASTER 7 Inch Variable Speed Polisher/Sander	697A	RAINBOW E-SERIES VACUUM CLEANER, equipped w/ all fittings, accessories, Suncast storage bin
682	CENTRAL PNEUMATIC 2 HP, 26 Gallon, 150 PSI Air Compressor	698	PREDATOR 8750 Watt Generator
683	CENTRAL PNEUMATIC 3 Gallon Oilless Pancake Air Compressor	699	PREDATOR 6500 Watt Generator
684	CHICAGO ELECTRIC 7 Inch Wet Cutting Tile Saw	700	CENTRAL PNEUMATIC 2 HP, 29 Gallon, 150 PSI Air Compressor
684A	CHILDREN TOYS	701	CHICAGO ELECTRIC Jump Start System
685	CHICAGO ELECTRIC 5-n-1 Portable Power Pack	702	CHICAGO ELECTRIC MIG 170 Wire Feed Welder
686	SMITH & JONES 1/2 HP General Purpose Electric Motor	703	HAUL MASTER 1000 LB Capacity Swing Back Trailer Jack
687	CHICAGO ELECTRIC Jump Start System	704	PACIFIC HYDROSTAR Portable Utility Pump
688	CHICAGO ELECTRIC MIG 180 Wire Feed Welder	705	CEN TECH Battery Charger
689	PITTSBURG AUTOMOTIVE Heavy Duty 30 Ton Bottle Jack	706	CHICAGO ELECTRIC 1 Inch SDS Rotary Hammer
690	CEN TECH Battery Charger	707	CEN TECH Battery Charger/Engine Starter
691	CENTRAL PNEUMATIC 2 HP, 29 Gallon, 150 PSI Air Compressor	708	CHICAGO ELECTRIC 90 Amp Flex Wire Welder
692	CHICAGO ELECTRIC 90 Amp Flex Wire Welder	709	CENTRAL MACHINERY 8 Inch Bench Grinder
693	CHICAGO ELECTRIC 5-n-1 Portable Power Pack	710	CENTRAL PNEUMATIC 3/8 Inch Impact Wrench & Chicago Electric Cordless Impact Driver
694	CENTRAL MACHINERY 4 Inch x 36 Inch Belt & 6 Inch Disc Sander	711	CHICAGO ELECTRIC Variable Speed Oscillating Multifunction Power Tool / PACIFIC HYDROSTAR Mini Submersible Fountain Pump
695	PACIFIC HYDROSTAR Portable Utility Pump	712	CEN TECH Battery Charger/Engine Starter

THANK YOU FOR ATTENDING OUR AUCTIONS

4070 NC Hwy 211 E
LUMBERTON, NC 28358

Printed:04/10/2014 09:21

(910) 739-0547

www.meekinsauction.com

Catalog for Auction:ANNUAL SPRING CONTRACTORS AUCTION

Lot Num	Description	Lot Num	Description
713	PITTSBURG AUTOMOTIVE 8000 lb Hyd Equipment Kit	729A	BLACK & DECKER 20V CORDLESS DRILL/DRIVER, c/w Matrix quick connect system, unused
714	CHICAGO ELECTRIC 1 1/8" Variable Speed SDS Rotary Hammer	730	CHICAGO ELECTRIC 1/2" Hammer Drill
715	CENTRAL PNEUMATIC 9 Gal, 135 psi Air Compressor	731	CEN TECH 3 N 1 Portable Power Pack
716	PREDATOR 4000 watt Generator	732	CHICAGO ELECTRIC Jump Start System
717	CENTRAL PNEUMATIC 3 Gallon Oilless Air Compressor	733	CHICAGO PNEUMATIC 1.5 HP, 6 Gal, 150 psi, Air Compressor
718	CENTRAL PNEUMATIC 3 Gallon Oilless Air Compressor	733A	CREEKSIDE CAMPING 18 INCH GRILL TRIPOD COOKER
719	CENTRAL PNEUMATIC 2 HP, 29 Gal, 150 psi Air Compressor	734	CHICAGO ELECTRIC 18v Ni-cd Quick Charger, CP Air Die Grinder w/ 3" Extension
720	CENTRAL PNEUMATIC 3 Gallon Oilless Air Compressor	735	CHICAGO ELECTRIC Electric Paint Remover & Chicago Electric Drywall Screwdriver
721	CENTRAL PNEUMATIC 3 Gal Oilless Pancake Air Compressor	736	CENTRAL MACHINERY 4 Inch x 36 Inch Belt & 6 Inch Disc Sander
722	CENTRAL PNEUMATIC 3 Gal Oilless Pancake Air Compressor	737	CHICAGO ELECTRIC 12 Inch Double-Bevel Sliding Compound Miter Saw w/Laser Guide System
723	CENTRAL PNEUMATIC 3 Gal Oilless Air Compressor	738	CHICAGO ELECTRIC 12 Inch Double-Bevel Sliding Compound Miter Saw w/Laser Guide System
724	CENTRAL PNEUMATIC 3 Gal Oilless Pancake Air Compressor	739	CHICAGO ELECTRIC 1.5 HP, 7 Inch Bridge Tile Saw
725	CENTRAL PNEUMATIC 2 HP, 4 Gal, 125 psi, Air Compressor	740	CHICAGO ELECTRIC 1.5 HP, 7 Inch Bridge Tile Saw
726	CENTRAL PNEUMATIC 3 Gal, Oilless Pancake Air Compressor	741	CENTRAL PNEUMATIC 2 HP, 26 Gallon, 150 psi Air Compressor
727	CENTRAL PNEUMATIC 3 Gal Oilless Air Compressor	742	CENTRAL PNEUMATIC 2 HP, 26 Gallon, 150 psi, Air Compressor
728	CHICAGO ELECTRIC 1 1/8" Variable Speed Rotary Hammer	743	CENTRAL PNEUMATIC 2.5 HP, 21 Gal, 125 psi, Air Compressor
729	CEN TECH 3 N 1 Portable Power Pack		

THANK YOU FOR ATTENDING OUR AUCTIONS

4070 NC Hwy 211 E
LUMBERTON, NC 28358
(910) 739-0547

Printed:04/10/2014 09:21

www.meekinsauction.com

Catalog for Auction:ANNUAL SPRING CONTRACTORS AUCTION

Lot Num	Description	Lot Num	Description
744	CENTRAL PNEUMATIC 3 Gal Oilless Pancake Air Compressor	760	CENTRAL PNEUMATIC 2 HP, 8 Gallon, 125 PSI Air Compressor
745	CENTRAL PNEUMATIC 3 Gallon Oilless Pancake Air Compressor	761	2014 WEN POWER 9000E GENERATOR SET, equipped w/ 420cc gas engine, keyless electric start, 9000 watt capability, 6.5 gallon fuel tank, 120/240V receptacles, mobility kit, unused
746	CENTRAL PNEUMATIC 3 Gallon Oilless Air Compressor		
747	CENTRAL PNEUMATIC 3 Gallon Oilless Air Compressor	762	2013 CF POWER LINE FA-2540C AIR COMPRESSOR, sn:20130715, equipped w/ 115 PSI capability, 10 gallon tank, electric powered, 120V, mobility kit, unused
748	CENTRAL PNEUMATIC 2 HP, 29 Gallon, 150 PSI Air Compressor	763	2013 CF POWER LINE FA-25110 AIR COMPRESSOR, sn:20130718, equipped w/ 115 PSI capability, 28 gallon tank, electric powered, 120V, mobility kit, unused
749	CENTRAL PNEUMATIC 2.5 HP, 21 Gallon, 125 PSI Air Compressor		
750	CHICAGO ELECTRIC 90 AMP Flex Wire Welder	764	CENTRAL PNEUMATIC 1.5 HP, 6 Gallon, 150 PSI Air Compressor
751	CENTRAL PNEUMATIC 3 Gallon Oilless Pancake Air Compressor	765	CENTRAL PNEUMATIC 3 Gallon Oilless Air Compressor
752	CENTRAL PNEUMATIC 3 Gallon Oilless Pancake Air Compressor	766	CENTRAL PNEUMATIC 3 Gallon Oilless Pancake Air Compressor
753	PREDATOR 212 cc Gas Engine	767	PREDATOR 212 cc Gas Engine
754	PREDATOR 212 cc Gas Engine	768	PREDATOR 212 cc Gas Engine
755	CHICAGO ELECTRIC 10 Inch Sliding Compound Miter Saw	769	PREDATOR 212 cc Gas Engine
756	2012 BLACK-MAX 2700 PSI PRESSURE WASHER, sn:AP3203180, equipped w/ Honda GCV160 engine, 2.3 gpm, hose, wand, nozzles, mobility kit, unused	770	PREDATOR 79 cc Gas Engine
757	2012 BLACK-MAX 2700 PSI PRESSURE WASHER, sn:AP2004342, equipped w/ Honda GCV160 engine, 2.3 gpm, hose, wand, nozzles, mobility kit, unused	771	PREDATOR 212 cc Gas Engine
		772	CEN TECH Battery Charger
		773	PREDATOR 212 cc Gas Engine
		774	CEN TECH 4-n-1 Portable Power Pack
758	CENTRAL PNEUMATIC 2 HP, 8 Gallon, 125 PSI Air Compressor	775	CENTRAL PNEUMATIC 3 Gallon Oilless Pancake Air Compressor
759	CENTRAL PNEUMATIC 2 HP, 8 Gallon, 125 PSI Air Compressor	776	CENTRAL PNEUMATIC 2 HP, 26 Gallon, 150 PSI Air Compressor

THANK YOU FOR ATTENDING OUR AUCTIONS

4070 NC Hwy 211 E
LUMBERTON, NC 28358

Printed:04/10/2014 09:21

(910) 739-0547

www.meekinsauction.com

Catalog for Auction:ANNUAL SPRING CONTRACTORS AUCTION

Lot Num	Description	Lot Num	Description
777	CENTRAL PNEUMATIC 2 HP, 4 Gallon, 125 PSI Air Compressor	794	CHICAGO ELECTRIC 5-n-1 Port Power Pack
778	CENTRAL PNEUMATIC 3 Gallon Oilless Air Compressor	795	CHICAGO ELECTRIC 12 Inch Double-Bevel Sliding Compound Miter Saw w/Laser Guide System
779	CENTRAL PNEUMATIC 3 Gallon Oilless Pancake Air Compressor	796	CHICAGO ELECTRIC 10 Inch, 13 Amp Industrial Table Saw
780	CENTRAL PNEUMATIC 3 Gallon Oilless Pancake Air Compressor	797	CENTRAL PNEUMATIC 3 Gallon Oilless Pancake Air Compressor
781	CENTRAL PNEUMATIC 2 HP, 29 Gallon, 150 PSI Air Compressor	798	CHICAGO ELECTRIC Inverter Arc/Tig Welder
782	CENTRAL PNEUMATIC 2.5 HP, 21 Gallon, 125 PSI Air Compressor	799	CHICAGO ELECTRIC 3-n-1 Power Pack
783	CENTRAL PNEUMATIC 3 Gallon Oilless Pancake Air Compressor	800	CENTRAL PNEUMATIC 3 Gallon Oilless Air Compressor
784	CENTRAL PNEUMATIC 2 HP, 17 Gallon, 150 PSI Air Compressor	801	CENTRAL PNEUMATIC 3 Gallon Oilless Air Compressor
785	CENTRAL PNEUMATIC 3 Gallon Oilless Pancake Air Compressor	802	CENTRAL PNEUMATIC 3 Gallon Oilless Pancake Air Compressor
786	CENTRAL PNEUMATIC 3 Gallon Oilless Pancake Air Compressor	803	CENTRAL PNEUMATIC 3 Gallon Oilless Pancake Air Compressor
787	CENTRAL PNEUMATIC 1.5 HP, 6 Gallon, 150 PSI Air Compressor	804	CENTRAL PNEUMATIC 3 Gallon Oilless Pancake Air Compressor
788	PREDATOR 212 cc Gas Engine	805	CENTRAL PNEUMATIC 3 Gallon Oilless Pancake Air Compressor
789	PREDATOR 212 cc Gas Engine	806	CENTRAL PNEUMATIC 3 Gallon Oilless Pancake Air Compressor
790	CENTRAL PNEUMATIC 3 Gallon Oilless Pancake Air Compressor	807	CENTRAL PNEUMATIC 3 Gallon Oilless Pancake Air Compressor
791	CENTRAL PNEUMATIC 1.5 HP, 6 Gallon, 150 PSI Air Compressor	808	CENTRAL PNEUMATIC 1.8 HP, 26 Gallon, 150 PSI Air Compressor
792	CENTRAL PNEUMATIC 1.5 HP, 6 Gallon, 150 PSI Air Compressor	809	CENTRAL PNEUMATIC 2.5 HP, 21 Gallon, 125 PSI Air Compressor
793	CENTRAL PNEUMATIC 3 Gallon Oilless Pancake Air Compressor	810	CENTRAL PNEUMATIC 2 HP, 8 Gallon, 125 PSI Air Compressor

THANK YOU FOR ATTENDING OUR AUCTIONS

4070 NC Hwy 211 E
LUMBERTON, NC 28358

Printed:04/10/2014 09:21

(910) 739-0547

www.meekinsauction.com

Catalog for Auction:ANNUAL SPRING CONTRACTORS AUCTION

Lot Num	Description	Lot Num	Description
811	CENTRAL PNEUMATIC 2 HP, 8 Gallon, 125 PSI Air Compressor	826B	HUSQVARNA HU775 BBC PUSH MOWER, equipped w/ 22 inch cutting width, Briggs & Stratton 175cc (4.1HP) engine, 3-in-1 mulch/rear bag/side discharge capability, unused
812	CENTRAL PNEUMATIC 2 HP, 29 Gallon, 150 PSI Air Compressor		
813	CENTRAL PNEUMATIC 2.5 HP, 21 Gallon, 125 PSI Air Compressor	826C	HIGH TEST 3/8 INCH X 14 FT TOW CHAIN
		826D	HIGH TEST 3/8 INCH X 14 FT TOW CHAIN
814	CENTRAL MACHINERY 9 Inch Bench Top Band Saw	826E	TROY-BILT 2700 PRESSURE WASHER, equipped w/ Briggs & Stratton 190 engine, 2700 psi, 2.3 gpm, unused
815	PREDATOR 6500 Watt Generator		
816	PREDATOR 6500 Watt Generator	826F	TROY-BILT 3000 PRESSURE WASHER, equipped w/ Honda GCV 190 engine, 3000 psi, 2.7 gpm, unused
817	CENTRAL MACHINERY 9 Inch Bench Top Band Saw		
818	CHICAGO ELECTRIC 12 Inch Double-Bevel Sliding Compound Miter Saw w/Laser Guide System	826G	TROY-BILT 3000 PRESSURE WASHER, equipped w/ Honda GCV 190 engine, 3000 psi, 2.7 gpm, unused
819	PACIFIC HYDROSTAR Drain Monster 50 Foot Power-Feed Drain Cleaner	827	MAIL BOX WITH POST MOUNT
820	CENTRAL PNEUMATIC 3 Gallon Oilless Pancake Air Compressor	828	SPRAYER EXTENSION NOZZLES, PARTS, ACCESSORIES
821	CENTRAL PNEUMATIC 3 Gallon Oilless Pancake Air Compressor	829	HUSQVARNA 288XP CHAIN SAW
822	CENTRAL PNEUMATIC 3 Gallon Oilless Pancake Air Compressor	830	WOODEN LIGHTHOUSE YARD/GARDEN DECORATIVE ITEM
823	CENTRAL PNEUMATIC 1.5 HP, 6 Gallon, 150 PSI Air Compressor	831	WOODEN LIGHTHOUSE YARD/GARDEN DECORATIVE ITEM
824	CENTRAL PNEUMATIC 2.5 HP, 21 Gallon, 125 PSI Air Compressor	832	LOW E TEMPERED 40 X 44 INTERIOR VINYL WINDOW
825	CENTRAL PNEUMATIC 2 HP, 8 Gallon, 125 PSI Air Compressor	833	ASSORTED SHOP TOOLS (12 Ton Hydraulic Jack, Black & Decker Grinder, Dayton Impact Wrench)
826	CENTRAL PNEUMATIC 40 LB Portable Soda Blaster	834	BUYERS TRUCK HITCH KITS & MISC ITEMS
826A	WEED EATER POWER EDGER	835	ANTIQUE FIELD GARDEN PLOW
		836	PREDATOR 212CC OHV HORIZONTAL SHAFT GAS ENGINE

THANK YOU FOR ATTENDING OUR AUCTIONS

Catalog for Auction:ANNUAL SPRING CONTRACTORS AUCTION

Lot Num	Description	Lot Num	Description
837	ALUMINUM CONCRETE PLACER RAKE	857	STAINLESS STEEL TWO COMPARTMENT SINK
837A	IRON ANTIQUE STYLE HAND WATER PUMP	858	FISH FRYER COOKING PAN
838	SHOP HAND TRUCK CART	859	DELTA ALUMINUM TOOL BOX
839	PLOW BOSS WALK BEHIND GARDEN PLOW, equipped w/ Briggs & Stratton 5HP engine	860	PORTABLE 30 INCH SHOP FAN
840	DIGGING & TRANSFER SHOVELS	861	ASSORTED EQUIPMENT PARTS
841	PORTRAIT 8 PAIN CEDAR INTERIOR DOORS	862	TRANSPORT EQUIPMENT CHAINS AND BINDERS (LARGE QUANTITY)
842	HUTTIG CLEAR GLASS INTERIOR DOORS	863	DELTA TOOL BOX, FUEL PUMP, ASSSORTED ITEMS
843	TOYOTA PICKUP STEP BOARDS AND ACCESSORIES	863A	POULAN PRO PR65N22SHB PUSH MOWER, sn04190M009307, equipped w/ 6.5HP engine, 22 inch cutting width, side discharge
844	SHOP UTILITY CART	864	ASSORTED CONTRACTOR PARTS & ACCESSORIES
845	GREASE HAND PUMP TOOL	865	PARROT-ICE BEVERAGE MACHINE
846	Third Arm	866	PALLET OF STRUCTURAL CONNECTOR ANCHORS
847	MID ATLANTIC AIR TANK	867	VINTAGE WASH POT, HORSE SADDLE MIRROR
848	WERNER D-1124-2X (24 FT) ALUMINUM EXTENSION LADDER	868	PICKUP CAMPER SHELL ACCESSORY
849	IGLOO IGLOO INDUSTRIAL 10 GALLON DRINKING WATER COOLERS	869	EQUIPMENT TRANSPORT CHAIN (LARGE QUANTITY)
850	CHAIN BINDERS AND LIFTING CHAIN	870	EQUIPMENT TRANSPORT CHAIN (LARGE QUANTITY)
851	LARGE QUANTITY OF BOLTS	871	EQUIPMENT TRANSPORT CHAIN BINDERS (LARGE QUANTITY)
852	PORTRAIT WOODEN INTERIOR DOORS	872	WERNER FIBERGLASS STEP LADDER
853	HUTTIG INSWING SMOOTH STAR EMBOSSED CLEAR GLASS EXTERIOR DOOR	872A	FISH-N-MATE HITCH MOUNT FISHING ROD RACK
854	WELDERS CELINE TANK CYLINDER		
855	PRY BAR HAND TOOL		
856	SHOP HAND TRUCK		

THANK YOU FOR ATTENDING OUR AUCTIONS

4070 NC Hwy 211 E
LUMBERTON, NC 28358
(910) 739-0547

Printed:04/10/2014 09:21

www.meekinsauction.com

Catalog for Auction:ANNUAL SPRING CONTRACTORS AUCTION

Lot Num	Description	Lot Num	Description
873	_____TRANSPORT CHAIN BINDERS (LARGE QUANTITY)	893	_____LONG HORN BARBECUE GRILL
874	_____ANTIQUE WEIGH SCALE	894	_____TEAK WOOD WAGON WHEEL BENCH
875	_____MULTIQUIP QP301.TH WATER PUMP, sn:301TH-2361, equipped w/ Honda GX240 (8.0HP) engine, 3 x 3 size connection, skid mounted	895	_____METAL ROOSTER, 6 1/2 FT
876	_____LONG HORNS	896	_____Draw Bar
877	_____LONG HORN SKULL	897	_____Stainless Steel Sink
878	_____LONG HORN SKULL	898	_____NATIVE AMERICAN WOODEN STATUE
879	_____BEAR TRAP, 36 INCH	899	_____BRIGG & STRATTON GAS ENGINES
880	_____JACK DANIELS WHISKY BARREL SINK	900	_____METTLER TOLEDO WEIGH SCALE, equipped w/ monitor
881	_____NATIVE AMERICAN TOTEM POLE	901	_____WHITE COMMERCIAL MOP BUCKET
882	_____JACK DANIELS WHISKY BARREL	902	_____ANTIQUE FIELD GARDEN PLANTER
883	_____JACK DANIELS WHISKY BARREL	903	_____ANTIQUE FIELD GARDEN PLANTER
884	_____JACK DANIELS WHISKY BARREL END TABLE	904	_____DRINK COOLERS, GAS FUEL CANS
885	_____JACK DANIELS WHISKY BARREL END TABLE	905	_____ROTARY GEARBOX, HYDRAULIC HOSES
886	_____HOMELITE 330 - POULAN 2150 CHAIN SAWS, CHICAGO ELECTRIC CHAIN SAW SHARPENER	906	_____CLAMP TOOL
887	_____SONIC ELECTRIC WHEELCHAIR	907	_____ANTIQUE SINGLE TREES
888	_____STORAGE RACK TRUCK HITCH ACCESSORY	908	_____ANTIQUE TRUMPET HORNS, COW BELL
889	_____TRUCK AND TRAILER LIGHT BAR ATTACHMENTS	909	_____POST HOLE DIGGER, SLEDGE HAMMER
890	_____PALLET OF ITALIAN ROSE MARBLE	910	_____SET OF MAGNUM 357 POWER TRUCK MIRRORS
891	_____TEXAS 6 FT METAL STAR	911	_____PROMOW PULL TYPE REEL MOWER ATTACHMENT, equipped w/ five reel cutting heads
892	_____Metal Wheel	912	_____QUICK HITCH TRACTOR ATTACHMENT
		913	_____HUFFY GOOD VIBRATIONS DELUXE BICYCLE
		914	_____WELCOME SIGN, 10 FT WIDTH

THANK YOU FOR ATTENDING OUR AUCTIONS

4070 NC Hwy 211 E
LUMBERTON, NC 28358

Printed:04/10/2014 09:21

(910) 739-0547

www.meekinsauction.com

Catalog for Auction:ANNUAL SPRING CONTRACTORS AUCTION

Lot Num	Description	Lot Num	Description
914A	YAKIMA BICYCLE RACK HITCH ATTACHMENT	929	ASSORTED SHOP TOOLS (Portable Air Tank, Floor Jack, Jump Start Pack)
915	16 FT WROUGHT IRON GATE WITH POSTS	930	HOMELITE & BLACK AND DECKER WEED EATERS
916	CONTRACTOR JOB SUPPLIES AND PRODUCTS	931	JONSEREDS CHAIN SAW
917	DEVILBISS CHARGE AIR PRO AIR COMPRESSOR, equipped w/ 125 PSI capability, electric powered, air hose	932	MOTORCYCLE PULLEY
918	ELECTRIC POWERED SHOP AIR COMPRESSOR	933	DEVILBISS IR75 3/4 HP AIR COMPRESSOR, electric powered, 75 PSI capability, mobility kit
919	POWER PROP ELECTRIC OUTBOARD (20LB THRUST) BOAT TROWELING MOTOR	934	PORTER CABLE 135 PSI AIR COMPRESSOR, sn:0405892224, equipped w/ 4 gallon tank, 3HP electric motor
920	LARGE QUANTITY OF LIFTING CHAINS	935	OFFICE TABLE
921	DURO (4) 20.5 X 8-10 GOLF CART TIRES	936	CONTRACTOR JOB SITE STORAGE BOX
922	CIT 10-TON PORT-A-POWER W/ PULL BACK	937	ASSORTED CONTRACTOR PARTS & ACCESSORIES
923	SQUIRREL FAN	938	UNUSED SIGN STANDS (LARGE QUANTITY)
924	GPI RP-10 FUEL PUMP, HOSE, AND NOZZLE	939	MILLER SAFETY HARNESES
925	BOSCH 11305 DEMOLITION ROTARY HAMMER, equipped w/ case, electric powered, hammer bits	940	CUB CADET BB45 BACKPACK BLOWER, equipped w/ 45cc gas engine, commerical series
926	SIMPSON STRONG-TIE JOB PRODUCTS	940A	COLUMBIA C-CLAMPS, AIR HOSE
926A	H K PORTER HEAVY DUTY BOLT CUTTER	941	TRICYCLE
926B	ASSORTED CONTRACTOR ACCESSORIES	942	ASSORTED PARTS AND ACCESSORIES
927	MILWAUKEE 5300 SERIES ROTARY HAMMER, equipped w/ case, electric powered, hammer bits	943	FRIGIDAIRE DEEP FREEZER APPLIANCE
928	SHUR-DRI PORTABLE UTILITY/SPRINKLER PUMP	944	HANDY 1000 INDUSTRIAL SERIES PRESSURE WASHER, equipped w/ 1000 psi capability, electric powered, hose and wand, mobility kit

THANK YOU FOR ATTENDING OUR AUCTIONS

4070 NC Hwy 211 E
LUMBERTON, NC 28358
(910) 739-0547

Printed:04/10/2014 09:21

www.meekinsauction.com

Catalog for Auction:ANNUAL SPRING CONTRACTORS AUCTION

Lot Num	Description	Lot Num	Description
945	2012 EASY-KLEEN MAGNUM GOLD PRESSURE WASHER, sn:EK13287, equipped w/ 4000 psi capability, 12V diesel fired burner, 15HP gas engine, electric start, 10 gallon poly fuel tank, mobility kit, *note: inoperable, needs repairs	959	SOLEUSAIR DEHUMIDIFIER, equipped w/ humidstat, two fan speeds, auto shut-off timer
946	2011 EASY-KLEEN MAGNUM GOLD PRESSURE WASHER, sn:EK11145, equipped w/ 4000 psi capability, 12V diesel fired burner, 15HP gas engine, electric start, 10 gallon poly fuel tank, mobility kit, *note: inoperable, needs repairs	960	SOLEUSAIR DEHUMIDIFIER, equipped w/ humidstat, two fan speeds, auto shut-off timer
947	LEER CAMPER SHELL TRUCK ACCESSORY	961	4 TON HYDRAULIC PORT-A-POWER
948	EXTERIOR DOOR AND FRAME	962	LIFETIME 8 FT UTILITY TABLE, quantity of 2
949	HEAVY DUTY ALL STEEL FOLDING CHAIRS	963	LIFETIME 6 FT UTILITY TABLE, quantity of 2
950	HEAVY DUTY ALL STEEL FOLDING CHAIRS	964	WHEEL CHAIR
950A	BEACH UMBRELLA, COLEMAN COOLER	965	GAS LOGS
951	HEAVY DUTY ALL STEEL FOLDING CHAIRS	966	LARGE QUANTITY OF 6X6 QUARRY FLOOR TILE
952	HEAVY DUTY ALL STEEL FOLDING CHAIRS	967	LARGE QUANTITY OF 6X6 QUARRY FLOOR TILE
953	SOLEUSAIR DEHUMIDIFIER, equipped w/ humidstat, two fan speeds, auto shut-off timer	968	SHOP CART
954	SOLEUSAIR DEHUMIDIFIER, equipped w/ humidstat, two fan speeds, auto shut-off timer	969	MOBILE GARDENING CART
955	SOLEUSAIR DEHUMIDIFIER, equipped w/ humidstat, two fan speeds, auto shut-off timer	970	MADISON 280 ROOM HEATER
956	SOLEUSAIR DEHUMIDIFIER, equipped w/ humidstat, two fan speeds, auto shut-off timer	971	SHOP UTILITY CART, c/w castor wheels
957	CAR TOW DOLLY	972	SHOP UTILITY CART, c/w castor wheels
958	SOLEUSAIR DEHUMIDIFIER, equipped w/ humidstat, two fan speeds, auto shut-off timer	973	LIFETIME 8 FT UTILITY TABLE, quantity of 2
		974	TOOL BOX/SHOP CART, c/w castor wheels
		975	WALK BEHIND MULE
		976	REDDY HEATER PRO110 PORTABLE HEATER
		977	PRO VALUE 10-TON CAPACITY PORT-A-POWER
		978	(4) CAR DOLLYS
		979	SKILSAW 8 1/4 INCH MOTORIZED TABLE SAW

THANK YOU FOR ATTENDING OUR AUCTIONS

4070 NC Hwy 211 E
LUMBERTON, NC 28358

Printed:04/10/2014 09:21

(910) 739-0547

www.meekinsauction.com

Catalog for Auction:ANNUAL SPRING CONTRACTORS AUCTION

Lot Num	Description	Lot Num	Description
980	ROCKWELL JAWHORSE RK9206 FOLDABLE PLYWOOD JAW	995	UNITED MEDICAL OXYGEN TANK, quantity of 3
981	DESIGNERS EDGE 65 WATT AREA LIGHT, quantity of 3	996	PRIME AIR PAC2000 AIR COMPRESSOR
982	2014 BIG BEE 6 FT X 12 FT END DUMP TRAILER, equipped w/ 7,000LB hauling capability, scissor lift dump body, tandem axle, ST205/75D 15 tires , sn:1B9FM1228EM177003	997	CHICAGO ELECTRIC OUTDOOR ELECTRIC CHIPPER/SHREDDER
983	2014 TOP LINE TH-18 UTILITY TRAILER, equipped w/ 7,000LB hauling capability, 6 ft 8 in x 18 ft load deck, wood floor, slide-in loading ramps, tandem axle, 205/75R 15 tires , sn:4UMTH182XEM000025	998	HUSQVARNA 350 CHAINSAW
984	POWR-FLITE FLOOR POLISHER	999	BLACK & DECKER FIRESTORM TABLE SAW
985	CHICAGO ELECTRIC 900 WATT PORTABLE GENERATOR	1000	CAMPBELL HAUSFIELD AIRLESS PAINT SPRAYER
986	CRAFTSMAN EVOLV 3 GALLON AIR COMPRESSOR	1001	SPIN MASTER H-2 AIR PUMP
987	TC250 BENCH GRINDER, 5 GALLON BUCKET OF PAINT	1002	SCHUMACHER 10 AMP BATTERY CHARGER
988	KENMORE MICROWAVE OVEN	1003	FISHER M-SCOPE METAL DETECTOR
989	LETEAC SVC-5000VA VOLTAGE REGULATOR	1004	SHERWIN WILLIAMS PROTECTIVE & MARINE COATING INDUSTRIAL ENAMEL, 4 gallons
990	CRAFTSMAN EDGE TRIMMER	1005	SHERWIN WILLIAMS PROTECTIVE & MARINE COATING INDUSTRIAL ENAMEL, 4 gallons
991	LEAF BLOWER	1006	2014 TOP LINE TLU-16 UTILITY TRAILER, equipped w/ 7,000LB hauling capability, 6 ft 4 in x 16 ft load deck, wood floor, slide-in loading ramps, tandem axle, 205/75R 15 tires , sn:4UMTU1626EM000022
992	SAMSUNG WINDOW AIR CONDITIONING UNIT	1007	ARTIC CAT 250 ALL TERRAIN VEHICLE, sn:1019B00, equipped w/ 246cc engine, 2 x 4, cargo racks, AT24 x 9-12 tires
993	2014 TOP LINE TH-18 UTILITY TRAILER, equipped w/ 7,000LB hauling capability, 6 ft 8 in x 18 ft load deck, wood floor, slide-in loading ramps, tandem axle, 205/75R 15 tires , sn:4UMTH1821EM000026	1008	JANITROL GAS FIRED HEATER
994	FELLOWS POWERSHRED PS70 PAPER SHREDDER	1009	JANITROL GAS FIRED HEATER
		1010	2014 TOP LINE TLU-16 UTILITY TRAILER, equipped w/ 7,000LB hauling capability, 6 ft 4 in x 16 ft load deck, wood floor, slide-in loading ramps, tandem axle, 205/75R 15 tires , sn:4UMTU162XEM000024

THANK YOU FOR ATTENDING OUR AUCTIONS

4070 NC Hwy 211 E
LUMBERTON, NC 28358

Printed:04/10/2014 09:21

(910) 739-0547

www.meekinsauction.com

Catalog for Auction:ANNUAL SPRING CONTRACTORS AUCTION

Lot Num	Description	Lot Num	Description
1011	2014 TOP LINE TLU-16 UTILITY TRAILER, equipped w/ 7,000LB hauling capability, 6 ft 4 in x 16 ft load deck, wood floor, slide-in loading ramps, tandem axle, 205/75R 15 tires , sn:4UMTU1628EM000023	1025	2014 BIG BEE FM84 FINISH MOWER, equipped w/ 84 inch cutting deck, pto driven, guide wheels, unused, fits three point hitch tractors
1012	BRINLY-HARDY CO SOD COMPACTOR	1026	2014 BIG BEE AGRI-7BH ROTARY CUTTER, equipped w/ 84 inch deck, heavy duty slip clutch, 60HP gear box, safety chains, unused, fits three point hitch tractors
1013	20 FT WALKING BOARD	1027	PULL TYPE AERATOR
1014	HOMELITE 38CC CHAINSAW	1028	PULL TYPE CULTIVATOR ATTACHEMENT
1015	HOMELITE 38CC CHAINSAW	1029	CULTIVATOR ATTACHMENTS
1016	HOMELITE 38CC CHAINSAW	1030	CAST IRON WOOD BURNING STOVE
1017	GIBSON CHAIN DRIVE WALK BEHIND TILLER	1031	UNITED 5 FT BOX BLADE, fits three point hitch tractors
1018	ALLIS-CHALMERS 2 ROW BOTTOM PLOW, fits three point hitch tractors	1032	DISC HARROW ATTACHMENT
1019	2014 TOP LINE JTW-12FA UTILITY TRAILER, equipped w/ 3,500LB hauling capability, 6 ft 4 in x 12 ft load deck, wood floor, side loading gate, single axle, loading tailgate ramp, 205/70R 15 tires , sn:4UMJT121XEM000029	1033	2014 BIG BEE SCL-660 ROTARY CUTTER, equipped w/ 72 inch deck, 85HP gear box, slip clutch, unused, fits three point hitch tractors
1021	REESE 2400HL HAY MOWER, equipped w/ 8 ft working width, pto driven, fits three point hitch tractors	1034	2014 BIG BEE AGRI-7BH ROTARY CUTTER, equipped w/ 84 inch deck, heavy duty slip clutch, 60HP gear box, safety chains, unused, fits three point hitch tractors
1022	2013 TOP LINE JT-10FA UTILITY TRAILER, equipped w/ 3,500LB hauling capability, 5 ft x 10 ft load deck, wood floor, single axle, loading tailgate ramp, 205/70R 15 tires , sn:4UMJT1019DM000427	1035	2014 CF POWER LINE 6 FT ROTARY CUTTER, equipped w/ 40HP gear box, unused, fits three point hitch tractors
1023	2014 TOP LINE JTW-12FA UTILITY TRAILER, equipped w/ 3,500LB hauling capability, 6 ft 4 in x 12 ft load deck, wood floor, side loading gate, single axle, loading tailgate ramp, 205/75R 15 tires , sn:4UMJT1216EM000027	1036	2014 CF POWER LINE 6 FT ROTARY CUTTER, equipped w/ 40HP gear box, unused, fits three point hitch tractors
1024	MORRA MH26 HAY TEDDER, sn:601191, pto driven, fits three point hitch tractors	1037	SHOP DOLLY
		1038	FAST HITCH ATTACHMENT
		1039	EZEE FLOW QUICK ATTACH SPREADER ATTACHMENT

THANK YOU FOR ATTENDING OUR AUCTIONS

4070 NC Hwy 211 E
LUMBERTON, NC 28358

Printed:04/10/2014 09:21

(910) 739-0547

www.meekinsauction.com

Catalog for Auction:ANNUAL SPRING CONTRACTORS AUCTION

Lot Num	Description	Lot Num	Description
1040	2014 CF POWER LINE 6 FT ROTARY CUTTER, equipped w/ 40HP gear box, fits three point hitch tractors, unused	1055	2014 HOLLOW 500 SEED SPREADER ATTACHMENT, unused, pto driven, AL. Spreader Type 2 series, fits three point hitch tractors
1041	2014 CF POWER LINE 5 FT ROTARY CUTTER, equipped w/ 40HP gear box, unused, fits three point hitch tractors	1056	2014 SUN BURST 5 FT BOX BLADE, unused, fits three point hitch tractors
1042	2014 CF POWER LINE 5 FT ROTARY CUTTER, equipped w/ 40HP gear box, unused, fits three point hitch tractors	1057	2014 SUN BURST 5 FT BOX BLADE, unused, fits three point hitch tractors
1043	2014 CF POWER LINE 5 FT ROTARY CUTTER, equipped w/ 40HP gear box, unused, fits three point hitch tractors	1058	2014 CF POWER LINE FIELD CULTIVATOR, equipped w/ 66 inch working width capability, springs, (7) shanks, unused, fits three point hitch tractors
1044	TUFF BOX TOOL BOX	1059	Large Qty of Polished Black Marble
1045	CRAFTSMAN 3 INCH BELT SANDER	1060	Large Qty of Polished Black Marble
1046	QUICK ATTACH 2 ROW BOTTOM PLOW	1061	CASE INTERNATIONAL 183 FIELD CULTIVATOR, fits three point hitch tractors
1047	HUB CAPS, quantity of 4	1062	2014 CF POWER LINE TM180-6 ROTARY TILLER, sn:TMET13050218007, equipped w/ 6 ft working width capability, slip clutch, unused, fits three point hitch tractors
1048	SINGLE ROW TOBACCO SETTER	1063	2014 CF POWER LINE TM150-5 ROTARY TILLER, sn:TMET13080515005, equipped w/ 5 ft working width capability, slip clutch, unused, fits three point hitch tractors
1049	2014 CF POWER LINE 5 FT ROTARY CUTTER, equipped w/ 40HP gear box, unused, fits three point hitch tractors	1064	2014 CF POWER LINE FIELD CULTIVATOR, equipped w/ 66 inch working width capability, springs, (7) shanks, unused, fits three point hitch tractors
1050	2014 CF POWER LINE 4 FT ROTARY CUTTER, equipped w/ 40HP gear box, unused, fits three point hitch tractors	1065	2014 TOP LINE HAY SPEAR ATTACHMENT, equipped w/ single tine, unused, fits three point hitch tractors
1051	2014 HOLLOW 500 SEED SPREADER ATTACHMENT, unused, pto driven, AL. Spreader Type 2 series, fits three point hitch tractors	1066	HOWSE 5 FT BOX BLADE, fits three point hitch tractors
1052	2014 CF POWER LINE 4 FT ROTARY CUTTER, equipped w/ 40HP gear box, 8 inch sides, fits three point hitch tractors, unused	1067	SQUARE HAY BALE LOADER, pull type, single axle, P235/75 R 15 tires
1053	2014 DIRT WORKER 6000 LANDSCRAPER BOX, equipped w/ 6 ft working width capability, unused, fits three point hitch tractors	1068	SET OF 6 FT LOADING RAMPS
1054	2014 CF POWER LINE 6 FT BOX BLADE, unused, fits three point hitch tractors		

THANK YOU FOR ATTENDING OUR AUCTIONS

4070 NC Hwy 211 E
LUMBERTON, NC 28358
(910) 739-0547

Printed:04/10/2014 09:21

www.meekinsauction.com

Catalog for Auction:ANNUAL SPRING CONTRACTORS AUCTION

Lot Num	Description	Lot Num	Description
1069	COLE MFG CO (1-ROW) PLANTER	1084	SCHUTZ 275 GALLON ECONOMY IBC TANK CONTAINER
1070	STAINLESS STEEL SHOP TABLE	1085	SCHUTZ 275 GALLON ECONOMY IBC TANK CONTAINER
1071	CHAIN LINK FENCE SECTION	1086	SCHUTZ 275 GALLON ECONOMY IBC TANK CONTAINER
1072	WOOD BURNING STOVE	1087	SCHUTZ 275 GALLON ECONOMY IBC TANK CONTAINER
1073	SEARS 287 UTILITY TRAILER, sn:615801, equipped w/ 4 ft x 5 ft aluminum load deck, single axle, 5.70 - 8 tires, *note: no title available, sold with bill of sale only	1088	SCHUTZ 275 GALLON ECONOMY IBC TANK CONTAINER
1074	OMNIVAN ENCLOSED TOOL UTILITY TRAILER, sn:7J70116, equipped w/ 5 ft x 6 ft body, parts/tools storage bins, single axle, 205/75R 14 tires, *note: no title available, sold with bill of sale only	1089	SCHUTZ 275 GALLON ECONOMY IBC TANK CONTAINER
1075	SHOPMADE 8 FT X 14 FT END DUMP TRAILER, equipped w/ removable side panels, single axle, 8.25 R 20 tires, *note: no title available, sold with bill of sale only	1090	SCHUTZ 275 GALLON ECONOMY IBC TANK CONTAINER
1076	LEINBACK LINE FIELD CULTIVATOR ATTACHMENT, fits three point hitch tractors	1091	M & W GRAVITY WAGON, equipped w/ 7.00-16 farm utility tires
1077	SCHUTZ 275 GALLON ECONOMY IBC TANK CONTAINER	1092	POWELL 55 TOBACCO TOPPER ATTACHMENT, sn:98452, two row working capability, fits three point hitch tractors
1078	SCHUTZ 275 GALLON ECONOMY IBC TANK CONTAINER	1093	NEW HOLLAND 404 CRUSHER HAY MOWER CONDITIONER, sn:20410, equipped w/ 7 ft working width, pto driven, springs, pull type
1079	SCHUTZ 275 GALLON ECONOMY IBC TANK CONTAINER	1094	SHOP UTILITY CART
1080	SCHUTZ 275 GALLON ECONOMY IBC TANK CONTAINER	1095	LONG 1549 FRONT END LOADER ATTACHMENT, sn:1280, equipped w/ loader bucket and push blade
1081	SCHUTZ 275 GALLON ECONOMY IBC TANK CONTAINER	1096	ALLIS-CHALMERS GRAIN WAGON RUNNING GEAR, equipped w/ 9.5L-15SL high flotation tires
1082	M & W 200B LITTLE RED WAGON SERIES GRAVITY WAGON, sn:200B-1370, equipped w/ J & M feed auger, 10.00-15SL farm implement tires	1097	SCHUTZ 275 GALLON ECONOMY IBC TANK CONTAINER
1083	SCHUTZ 275 GALLON ECONOMY IBC TANK CONTAINER	1098	MASSEY FERGUSON 902 2 ROW PLANTER, sn:814452, fits three point hitch tractors

THANK YOU FOR ATTENDING OUR AUCTIONS

4070 NC Hwy 211 E
LUMBERTON, NC 28358
(910) 739-0547

Printed:04/10/2014 09:21

www.meekinsauction.com

Catalog for Auction:ANNUAL SPRING CONTRACTORS AUCTION

Lot Num	Description	Lot Num	Description
1099	_____FIRESTONE (3)380/90R 46 RADIAL 9000 SERIES TRACTOR TIRES	1117	_____PITTSBURGH FIELD GENERAL PITTSBURGH FIELD GENERAL ROTARY CUTTER, equipped w/ 124 inch cutting width capability, Comer gearboxes, fits three point hitch tractors
1100	_____LONG 180T TOBACCO TRAILER, sn:1977		
1101	_____JOHN DEERE 7100 SERIES PLANTER, equipped w/ 4 row working capability, distributors, row markers, fits three point hitch tractors	1117A	_____SQUIRREL FAN
		1117B	_____SQUIRREL FAN
1102	_____TAYLOR 4-WHEEL TOBACCO TRAILER	1117C	_____SQUIRREL FAN
1103	_____TAYLOR 4-WHEEL TOBACCO TRAILER	1117D	_____SQUIRREL FAN
1104	_____TAYLOR 4-WHEEL TOBACCO TRAILER	1117E	_____SQUIRREL FAN
1105	_____SET OF ROLLING BASKETS ATTACHMENTS, fits field cultivators	1117F	_____SQUIRREL FAN
		1117G	_____DOUBLE SQUIRREL FAN
1106	_____PATIO CHARCOAL BARBECUE GRILL	1117H	_____SQUIRREL FAN
1107	_____TRI-ARC 500LB CAPACITY SHOP STEP LADDER	1117I	_____DOUBLE SQUIRREL FAN
1108	_____JOHNSON SWEET POTATO DIGGER ATTACHMENT, pto driven, fits three point hitch tractors	1118	_____PULL TYPE DISC HARROW ATTACHMENT, equipped w/ 28 disc blades, 8 ft working width
1109	_____BATHROOM TWO-SINK VANITY TOP	1119	_____BURROUGHS 3 Point Hatch Sprayer
1110	_____SKID MOUNTED DIESEL FUEL TANK, equipped w/ Gasboy hand pump and hose	1120	_____TAYLOR JUNIOR TOBACCO STRIPPER, sn:5797, equipped w/ one row working capability, pull type, 9.5L-15 tires
1111	_____SHOPMADE BARBECUE GRILL		
		1121	_____Antique One Row Cole Planter
1112	_____FORD 101 SERIES (2-ROW) BOTTOM PLOW, sn:9726, fits three point hitch tractors	1122	_____KMC KELLEY 2-ROW ROLLING CULTIVATOR, sn:531, equipped w/ distributors, fits three point hitch tractors
1113	_____FUTUREX PICKUP BED LINER		
1114	_____UTILITY POLE	1123	_____KMC KELLEY RIPPER BEDDER, equipped w/ 14 ft working width, four ripper shanks, heavy duty frame, fits three point hitch tractors
1115	_____ (2) SECTIONS OF ROUND TUBING IRON		
1116	_____AGMATE ESTATE MOWER EM7 FINISH MOWER, sn:01589, equipped w/ 7 ft cutting width, 540 rpm max gearbox, guide wheels, fits three point hitch tractors	1124	_____POWELL 55 TOBACCO TOPPER ATTACHMENT, sn:94367, two row working capability, fits three point hitch tractors

THANK YOU FOR ATTENDING OUR AUCTIONS

4070 NC Hwy 211 E
LUMBERTON, NC 28358
(910) 739-0547

Printed:04/10/2014 09:21

www.meekinsauction.com

Catalog for Auction:ANNUAL SPRING CONTRACTORS AUCTION

Lot Num	Description	Lot Num	Description
1125	ARMSTRONG HI-POWER DUAL TRACTOR TIRES, equipped w/ rims, 18.4-38 tire size, quantity of 2	1139	AAWK 136 DRAG BLADE, sn:740, equipped w/ 6 ft working width, fits three point hitch tractors
1125A	GRILL MASTER GAS COOKING GRILL	1140	JOHN DEERE ONE ROW PLANTER, equipped w/ distributor, cultivator shanks, fits three point hitch tractors
1126	TOBACCO PLANT TRAY PLATFORM RACK	1140A	FINISH MOWER, fits three point hitch tractor, 5 ft working width
1127	GIBSON UTILITY TRAILER, equipped w/ 6 ft 4 in x 14 ft load deck, steel floor, tandem axle, 7-14.5 tires, *note: no title available, sold with bill of sale only	1141	FIELD CULTIVATOR ATTACHMENT, fits three point hitch tractors
1128	SET OF ROLLING BASKETS ATTACHMENTS, fits field cultivators	1142	LANDSCRAPER BLADE ATTACHMENT, fits three point hitch tractors
1129	2 ROW BOTTOM PLOW ATTACHMENT, fits three point hitch tractors	1143	LILLISTON ROLLING FIELD CULTIVATOR, fits three point hitch tractors
1130	MASSEY FERGUSON 2 ROW PLANTER, sn:852003668, fits three point hitch tractors	1144	36 INCH CHICKEN HOUSE FAN, quantity of 3
1131	LONG 180T TOBACCO TRAILER, sn:1363	1145	TAYLOR 2-WHEEL TOBACCO TRAILER
1132	MECHANICAL TRANSPLANTER 6000 TOBACCO PLANTER, equipped w/ 4 row working capability, fits three point hitch tractors	1146	LANDOLL 120 SOILMASTER DISC CHISEL PLOW, sn:3797, equipped w/ (5) chisel shanks, (4) front mount disc blades, fits three point hitch tractors
1133	ATHENS PULL TYPE DISC HARROW, equipped w/ 13 ft working width, 44 disc blades, rear single hydraulic remote outlet	1147	WOODS SM2080 ROTARY CUTTER, sn:1238, equipped w/ 9 ft cutting width capability, safety chains, fits three point hitch tractors
1134	TAYLOR 4-WHEEL TOBACCO TRAILER	1148	TAYLOR 2-WHEEL TOBACCO TRAILER
1135	LONG 180T TOBACCO TRAILER, sn:1362	1149	SHOPMADE TILT DECK UTILITY TRAILER, equipped w/ 6 ft x 14 ft load deck, steel floor, single axle, 205/75R 15 tires, *note: no title available, sold with bill of sale only
1136	SHOPMADE UTILITY TRAILER, equipped w/ Delta tool box, single axle, *note: no title available, sold with bill of sale only		
1137	36 INCH CHICKEN HOUSE FAN, quantity of 3	1150	36 INCH CHICKEN HOUSE FAN, quantity of 3
1138	DEARBORN 5 FT DRAG BLADE ATTACHMENT, fits three point hitch tractors	1151	36 INCH CHICKEN HOUSE FAN, quantity of 3
		1152	36 INCH CHICKEN HOUSE FAN, quantity of 3

THANK YOU FOR ATTENDING OUR AUCTIONS

4070 NC Hwy 211 E
LUMBERTON, NC 28358
(910) 739-0547

Printed:04/10/2014 09:21

www.meekinsauction.com

Catalog for Auction:ANNUAL SPRING CONTRACTORS AUCTION

Lot Num	Description	Lot Num	Description
1153	MECHANICAL TRANSPLANTER TWO-ROW TOBACCO SETTER, equipped w/ 300 gallon poly tank, Soda-Flo distributors, four cup, pull type	1171	LARGE QUANTITY OF WINDOWS AND SCREENS
1154	EQUIPMENT TRANSPORT CHAINS (QUANTITY OF 2)	1172	MISCELLANEOUS TOOLS & ACCESSORIES
1155	EQUIPMENT TRANSPORT CHAINS (QUANTITY OF 3)	1173	LARGE QUANTITY OF MICROWAVE OVENS
1156	UTILITY TRAILER TIRE RIMS (QUANTITY OF 4)	1174	WINDOW AIR CONDITIONING UNITS, quantity of 3
1157	NEW HOLLAND 352 PORTABLE FEED MILL, sn:352640, equipped w/ single auger system, pto driven, pull type attachment	1175	CENTRAL MACHINERY 16 INCH SCROLL SAW
1158	36 INCH CHICKEN HOUSE FAN, quantity of 3	1176	PREDATOR 212CC GAS ENGINE
1159	36 INCH CHICKEN HOUSE FAN, quantity of 2	1177	AMERICAN TOOLS EXCHANGE 5 SPEED DRILL PRESS
1160	LITHONIA LIGHTING 400 WATT LAMP, quantity of 4	1178	2007 FORD F-150 GRILL
1161	NEW HOLLAND 273 SQUARE HAY BALER, sn:328851, pto driven, pull type attachment	1179	BATHROOM SINK
1162	SET OF TRACTOR WEIGHTS	1180	36 INCH INDUSTRIAL SHOP FAN
1163	TRANSPORT CHAIN BINDERS (QUANTITY OF 5)	1181	QUICK ATTACH DISC HARROW ATTACHMENT
1164	TRANSPORT CHAIN BINDERS (QUANTITY OF 5)	1182	QUICK ATTACH DISC HARROW ATTACHMENT
1165	BROCK GRAIN BIN	1183	LEINBACH QUICK ATTACH DRAG BLADE
1166	BROCK GRAIN BIN	1184	QUICK ATTACH SINGLE ROW BOTTOM PLOW
1167	WROUGHT IRON OUTDOOR END TABLE	1185	QUICK ATTACH 2 ROW BOTTOM PLOW
1168	LARGE QUANTITY OF SHUTTERS	1186	11L-16.5 TIRES AND RIMS, quantity of 2
1169	ANTIQUE SINGLE ROW PUSH PLOW	1187	FORD F-250 SUPERDUTY 8 FT PICKUP BED BODY, equipped w/ liner, bumper, accessories
1170	RYOBI 8 1/4 INCH RADIAL ARM SAW	1188	KARGO MASTER TRUCK UTILITY RACK ATTACHMENT
		1189	A.R.E. SERVICE TOOL CAMPER SHELL TRUCK BED ACCESSORY

THANK YOU FOR ATTENDING OUR AUCTIONS

4070 NC Hwy 211 E
LUMBERTON, NC 28358
(910) 739-0547

Printed:04/10/2014 09:21

www.meekinsauction.com

Catalog for Auction:ANNUAL SPRING CONTRACTORS AUCTION

Lot Num	Description	Lot Num	Description
1190	TURNER FUEL TANK, equipped w/ hand pump, hose, nozzle	1212	NEW IDEA CORN PICKER, sn:295427, equipped w/ two row working capability, pto driven, pull type, 7.50-24 farm utility tires
1200	1995 WOODS 9204-2 BATWING ROTARY CUTTER, sn:13552, equipped w/ 17 ft cutting width capability, guide wheels, pull type	1213	AVCO GRAVITY WAGON, sn:3266, equipped w/ 5010 series running gear, 14L-16.1 farm implement tires
1201	AVCO GRAVITY WAGON, sn:C1988, equipped w/ P & H 2910 running gear, 11L-15SL farm service tires	1214	LAND PRIDE AFM40-200 BATWING ROTARY CUTTER, sn:L157717, equipped w/ 18 ft cutting width capability, guide wheels, pto driven, pull type attachment
1202	J & M 350-20 GRAVITY WAGON, sn:9985, equipped w/ 12 Ton running gear, Goodyear 12.5L-15 farm service tires	1215	DMI BIG-LITTLE SERIES GRAVITY WAGON, equipped w/ heavy duty running gear, 13.50-16.1 farm implement tires
1203	J & M 350-20 GRAVITY WAGON, sn:10973, equipped w/ 16.5L-16.1SL tires	1216	AVCO GRAVITY WAGON, sn:2453, equipped w/ 5010 series running gear, 14L-16.1 farm implement tires
1204	KINZE MT SERIES 12-ROW PLANTER, sn:16142, equipped w/ hydraulic folding row markers, fits three point hitch tractors	1217	VERMEER 605J ROUND HAY BALER, sn:1VRA121R9H1001003, equipped w/ eight belts, pto driven, 6 ft x 5 ft bale size capability, pull type, *note: monitor located in office
1205	JOHN DEERE 8300 NO-TILL GRAIN DRILL, sn:047237N, equipped w/ row markers, pull type attachment	1218	KORY GRAVITY WAGON, equipped w/ Kory 8278 running gear, 12.5L-16 farm utility tires
1206	FARMERS AMERICA GRAVITY WAGON, sn:91038, equipped w/ 11L-15 Treadura tires, M & W running gear	1219	KING EZMW2 DISC HARROW, sn:E32563, equipped w/ 10 ft working width, 32 disc blades, pull type
1207	JOHN DEERE 8300 GRAIN DRILL, sn:028631N, equipped w/ 12 ft working width, pull type attachment	1220	JOHN DEERE 8200 GRAIN DRILL, sn:017050, equipped w/ 6 inch spacers, pull type
1208	DMI BIG-LITTLE SERIES GRAVITY WAGON, equipped w/ 16.5L-16.1SL farm implement tires	1221	2013 INDUSTRIAS AMERICA F12 BOX BLADE, equipped w/ 9 ft working width, unused, 7.60-15SL Treadura tires, pull type
1209	DMI 300 BIG-LITTLE SERIES GRAIN WAGON, sn:0105, equipped w/ 11L-15SL farm service tires	1222	BUSH HOG SM60 SLOPE MOWER ATTACHMENT, sn:12-01320, equipped w/ 5 ft cutting deck, pto driven, fits three point hitch tractors
1210	JOHN DEERE 8300 GRAIN DRILL, sn:046205N, equipped w/ 12 ft working width, pull type attachment	1223	DMI BIG-LITTLE SERIES GRAVITY WAGON, equipped w/ 16.5L-16.1 farm implement tires
1211	NEW IDEA 324 CORN PICKER, sn:300480, equipped w/ 2-row working capability, pto driven, pull type, 7.50-24 tires		

THANK YOU FOR ATTENDING OUR AUCTIONS

4070 NC Hwy 211 E
LUMBERTON, NC 28358
(910) 739-0547

Printed:04/10/2014 09:21

www.meekinsauction.com

Catalog for Auction:ANNUAL SPRING CONTRACTORS AUCTION

Lot Num	Description	Lot Num	Description
1224	WOODS 9204-3 BATWING ROTARY CUTTER, sn:598560, equipped w/ 18 ft cutting width capability, guide wheels, pto driven, pull type attachment	1234	JOHN DEERE 566-5X6 ROUND HAY BALER, sn:E00566X126990, equipped w/ 61.6 x 72 inch bale size capability, eight belts, pull type attachment
1225	INTERNATIONAL HARVESTER 510 GRAIN DRILL, sn:510C1111, equipped w/ 12 ft working width, 7.50-20SL tires, pull type	1235	JOHN DEERE 910 V-RIPPER ATTACHMENT, sn:010309A, equipped w/ V-Frame shank position, seven shanks, gauge wheels, coulters, fits three point hitch tractors
1226	LAND PRIDE AFM40-200 BATWING FINISH MOWER, sn:L157791, equipped w/ 18 ft cutting width capability, pto driven, guide wheels, pull type	1236	HARDEE T-9515-PTW BATWING ROTARY CUTTER, sn:010109, equipped w/ 15 ft cutting width capability, tri deck, hydraulic controls, pull type attachment
1227	INTERNATIONAL HARVESTER 510 GRAIN DRILL, sn:0390163C010994, equipped w/ 12 ft working width, 7.50-20 tires, pull type	1237	2000 VERMEER 605 SERIES L ROUND HAY BALER, sn:1VRR141E9Y1001983, equipped w/ Accu-Bale controls, 6 ft x 5 ft bale size capability, pto driven, pull type, *note: monitor located in office
1228	UNITED FARM TOOLS 955 FERTILIZER SPREADER, equipped w/ stainless steel distributor body, 5 ton capability, pto driven, tarp, mounted on tandem axle running gear, pull type attachment	1238	HARDEE 1198W ROTARY CUTTER, sn:007450, equipped w/ 98 inch cutting width capability, 8 inch sides, guide wheels, excellent condition, fits three point hitch tractors
1229	JOHN DEERE 7000 PLANTER, sn:1225627, equipped w/ distributors, 4 row working capability, row markers, pull type attachment		
1230	INTERNATIONAL HARVESTER 5100 SOYBEAN SPECIAL GRAIN DRILL, sn:0390206C021002, equipped w/ 10 ft working width, pull type, 7.50-20 tires	1239	MASSEY FERGUSON 4015 MASSEY FERGUSON 4015 BATWING ROTARY CUTTER, sn:4015AP4573, equipped w/ 15 ft cutting width capability, pull type
1231	JOHN DEERE HX14 ROTARY CUTTER, sn:P0HX14D008635, equipped w/ 14 ft cutting width capability, heavy duty frame, safety chains, fits three point hitch tractors	1240	2014 MAGNUM 4000 GOLD SERIES HOT WATER PRESSURE WASHER, sn:EK17272, equipped w/ 15HP gas engine, electric start, 4000 PSI capability, 12V diesel fired burner, 10 gallon poly fuel tank, hose, gun, wand, soap assembly, totally self contained, mobility kit, unused
1232	TYLER 4-TON PULL TYPE FERTILIZER SPREADER, equipped w/ tandem axle running gear, rear discharge, pto driven, 11L-15 tires	1241	GEHL 55 MIX-ALL SERIES PORTABLE FEED MILL, sn:08392, pto driven, single axle running gear, single discharge auger, 225/75R 15 tires
1233	HARDEE PT-300-LP4 AGRICULTURAL SPRAYER, sn:9246483, equipped w/ 300 gallon tank, Hypro pump, folding spray arms, pull type	1242	CHANDLER PULL TYPE MANURE SPREADER, pto driven, single axle running gear, rear discharge direction, American Farmer 19L-16.1SL tires

THANK YOU FOR ATTENDING OUR AUCTIONS

4070 NC Hwy 211 E
LUMBERTON, NC 28358
(910) 739-0547

Printed:04/10/2014 09:21

www.meekinsauction.com

Catalog for Auction:ANNUAL SPRING CONTRACTORS AUCTION

Lot Num	Description	Lot Num	Description
1243	JOHN DEERE 220 CENTER FOLD DISC HARROW, equipped w/ 20 ft working width capability, (48) disc blades, pull type attachment	1252	DMI 312 GRAVITY WAGON, sn:004366, equipped w/ 12.5L-15 farm service tires
1244	UNVERFERTH PERFECTA II FIELD CULTIVATOR, sn:2830, equipped w/ 15 ft working width capability, rolling baskets, fits three point hitch tractors	1253	KINZE 840 GRAIN CART, sn:501152, equipped w/ hydraulic folding auger, pto driven, light package, grain flow gate indicator, manual tarp system, Firestone 30.5L-32 tires
1245	BUSH HOG 2610 LEGEND ROTARY FLEX MOWER, equipped w/ 10 ft deck, 120 inch width, safety chains, pull type	1254	2001 CENTURY HD1000 PULL TYPE SPRAYER, sn:HYD-0114-102, equipped w/ 1,000 gallon poly tank, 100 gallon rinse-flush tank, hydraulic driven pump, high output foam marking system, hydraulic X-fold boom, 60 ft boom spray width capability, single axle "Tall Tire" adjustable wheel spacing, Hiniker rate controller monitor, 13.6-38 Hi-Power Lug tires, *note: monitor located in office
1246	1958 INTERNATIONAL HARVESTER FARMALL 560 TRICYCLE ROW-CROP TRACTOR, sn:4601SY, equipped w/ 6 cyl (63HP) gas engine, torque amplifier partial power shift transmission, work light package, International Harvester fast hitch, pto, tool bar, single hydraulic remote valve, draw bar, Huskee 16.9-38 field grip rear tires	1255	CASE INTERNATIONAL 3900 FLEX WING DISC HARROW, sn:JAG0186303, equipped w/ 27 ft working width capability, 70 disc blades, dual hydraulic folding wings, pull type
1247	1952 OLIVER ROW CROP 88 TRICYCLE ROW-CROP TRACTOR, sn:138371, equipped w/ 6 cylinder engine power, 6 forward/2 reverse gear transmission, light package, pto, draw bar, single hydraulic remote outlet, 15.5-38 rear tires	1256	CASE IH 496 FLEX-WING DISC HARROW, sn:0470000U038183, equipped w/ 22 ft working width capability, (62) disc blades, pull type
1248	CASE IH 3900 FLEX-WING DISC HARROW, sn:JAG0184415, equipped w/ 25 ft working width capability, (82) disc blades, pull type	1257	CASE INTERNATIONAL 496 FLEX WING DISC HARROW, sn:047000C062665, equipped w/ 25 ft working width capability, 74 disc blades, dual hydraulic folding wings, pull type
1249	JOHN DEERE 750 NO-TILL GRAIN DRILL, sn:N00750X006074, equipped w/ 14 ft working width, Unverferth Drill-Fit and hydraulic lift auger, pull type	1258	CASE INTERNATIONAL 496 FLEX WING DISC HARROW, sn:0470000U042801, equipped w/ 27 ft working width capability, 82 disc blades, dual hydraulic folding wings, 9.5L-15 farm implement tires, rear draw bar, single hydraulic remote outlet for tandem option, pull type attachment
1250	JOHN DEERE 750 NO-TILL GRAIN DRILL, sn:N0750X004426, equipped w/ 15 ft working width capability, Yetter markers, dolly wheel, pull type attachment	1259	KEWANEE 1175 FLEX WING DISC HARROW, sn:100204, equipped w/ dual hydraulic folding wings, 62 disc blades, 11L-15SL tires, pull type
1251	JOHN DEERE 7000 SERIES PLANTER, equipped w/ 6 row working capability, distributors, row markers, pull type		

THANK YOU FOR ATTENDING OUR AUCTIONS

4070 NC Hwy 211 E
LUMBERTON, NC 28358
(910) 739-0547

Printed:04/10/2014 09:21

www.meekinsauction.com

Catalog for Auction:ANNUAL SPRING CONTRACTORS AUCTION

Lot Num	Description	Lot Num	Description
1260	2014 INDUSTRIAS AMERICA 2432 OFF-SET DISC HARROW, equipped w/ 32 disc blades, 24 inch disc diameter, unused, pull type, 11L-15SL tires	1269	NEW IDEA 324 CORN PICKER, sn:295843, pto driven, two row working capability, pull type, 7.50-24 tires
1261	2013 INDUSTRIAS AMERICAN 2424 OFFSET DISC HARROW, equipped w/ 24 inch disc blades, 9 ft width, pull type, Treadura 11L-15SL tires	1270	JOHN DEERE 750 NO-TILL GRAIN DRILL, sn:N00750X013489, equipped w/ 15 ft working width capability, hydraulic controls, catwalk platform, pull type
1262	JOHN DEERE 230 WING FOLD POWER-FLEX DISK HARROW, sn:021319A, equipped w/ 23 ft working width capability, dual hydraulic folding wings, 58 disc blades, 11L-15SL tires, pull type	1271	JOHN DEERE 750 NO-TILL GRAIN DRILL, sn:N00750X015618, equipped w/ 15 ft working width, rear catwalk platform, light package, dolly hitch, pull type attachment
1263	JOHN DEERE 230 WING FOLD POWER-FLEX DISK HARROW, sn:028204A, equipped w/ 23 ft working width capability, dual hydraulic folding wings, 58 disc blades, 11L-15 tires, pull type	1272	INTERNATIONAL HARVESTER 720 PLOW, sn:1050000U031204, equipped w/ 5 row bottom, heavy duty frame, fits three point hitch tractors
1264	UNVERFERTH 5000 GRAIN CART, sn:B18530123, equipped w/ single hydraulic folding auger, manual tarp system, Firestone 23.1-26 tires	1273	JOHN DEERE 450 PLOW, sn:117111A, equipped w/ 5 row bottom, fits three point hitch tractors
1265	INTERNATIONAL HARVESTER 720 PLOW, sn:1050000U012966, equipped w/ heavy duty frame, 5 row bottom, fits three point hitch tractors	1274	JOHN DEERE 2500 PLOW, sn:014814, equipped w/ 6 row bottom, hyd controls, fits three point hitch tractors
1266	JOHN DEERE 566-5X6 ROUND HAY BALER, sn:E00566X117191, equipped w/ 61.6 x 72 inch bale size capability, eight belts, pto driven, hydraulic controls, pull type, *note: monitor located in office	1275	PARKER 450 GRAIN CART, sn:0250049, equipped w/ hydraulic folding auger, pto driven, Firestone 18.4-26 tires
1267	JOHN DEERE 7000 PLANTER, sn:059359A, equipped w/ distributors, (2) 75 gallon poly tanks, pump, 8 row working capability, pull type	1276	E-Z TRAIL 475 GRAIN CART, equipped w/ 18.4-26 tires, hydraulic folding single auger, pto driven
1268	KINZE 600 GRAIN CART, sn:1916, equipped w/ hydraulic folding auger, pto driven, light package, grain flow gate indicator, Shur-Co tarp system, Firestone 24.5-32 tires	1277	NEW IDEA 324 CORN PICKER, sn:255752, equipped w/ two row working capability, pto driven, pull type, 7.50-24 power implement tires
		1278	DMI BIG-LITTLE SERIES GRAVITY WAGON, equipped w/ Goodyear 15.00-16 farm implement tires
		1279	BRENT 420 GRAIN CART, sn:86420122, equipped w/ hydraulic fold single auger system, pto driven, work light package, 18.4-26 all weather tires

THANK YOU FOR ATTENDING OUR AUCTIONS

Catalog for Auction:ANNUAL SPRING CONTRACTORS AUCTION

Lot Num	Description	Lot Num	Description
1280	2007 JOHN DEERE 635F HYDRAFLEX GRAIN HEADER PLATFORM, sn:H00635F711425, equipped w/ 35 ft working width capability	1293	2001 CASE INTERNATIONAL 1020 GRAIN HEAD PLATFORM, sn:CBJ028075, equipped w/ 30 ft working width capability
1281	2001 JOHN DEERE 930 FLEX GRAIN HEAD PLATFORM, sn:H00930F691653	1294	CASE IH 1020 GRAIN HEAD PLATFORM, sn:000532, equipped w/ 20 ft working width capability
1282	1996 JOHN DEERE 930 FLEX GRAIN HEAD PLATFORM, sn:H00930F667086	1295	2001 JOHN DEERE 925 FLEX GRAIN HEADER PLATFORM, sn:H00925F655914
1283	JOHN DEERE 930 FLEX GRAIN HEAD PLATFORM, sn:H00930F676461, equipped w/ 30 ft working width capability	1296	1999 CASE/INTERNATIONAL 1020 GRAIN HEADER PLATFORM, sn:JJC0319601, equipped w/ 30 ft working width capability
1284	1995 JOHN DEERE 925 FLEX GRAIN HEAD PLATFORM, sn:H00925F661336	1297	NEW HOLLAND 973 GRAIN HEADER PLATFORM, sn:595664, equipped w/ 25 ft working width capability
1285	1990 CASE INTERNATIONAL 1020 GRAIN HEADER PLATFORM, sn:JJC0080808, equipped w/ 30 ft working width capability	1298	1996 JOHN DEERE 925 FLEX GRAIN HEAD PLATFORM, sn:H00925F666606
1286	1991 CASE INTERNATIONAL 1020 GRAIN HEADER PLATFORM, sn:JJC0084583, equipped w/ 25 ft working width capability	1299	JOHN DEERE 218 GRAIN HEAD PLATFORM, sn:319465H, equipped w/ 18 ft working width capability
1287	CAT G30 GRAIN HEAD PLATFORM, sn:6WZ00136, equipped w/ 30 ft working width capability	1300	JOHN DEERE 643 (6-ROW) CORN HEAD, sn:474472
1288	1994 JOHN DEERE 930 FLEX GRAIN HEADER PLATFORM, sn:H00930F656223, equipped w/ 30 ft working width capability	1301	JOHN DEERE 643 (6-ROW) CORN HEAD, sn:H00040X567641
1289	JOHN DEERE 930 FLEX GRAIN HEADER PLATFORM, sn:H00930F656430, equipped w/ 30 ft working width capability	1302	CASE/INTERNATIONAL 1064 CORN HEAD, sn:JJC0151002, equipped w/ 6 row working capability
1290	JOHN DEERE 444 CORN HEAD, sn:466816, equipped w/ 4 row working capability	1303	NEW HOLLAND 974 CORN HEAD, sn:484181, 8 row working capability
1291	1996 CASE IH 1020 GRAIN HEAD PLATFORM, sn:JJC0221018, equipped w/ 30 ft working width capability	1304	ALLIS-CHALMERS 6 ROW CORN HEAD
1292	JOHN DEERE 220 GRAIN HEAD PLATFORM, sn:H00220F611799	1305	GOLDEN BELL HTS4 HEADER TRANSPORT TRAILER, sn:376, equipped w/ adjustable brackets, will transport up to 25 ft headers, 9.5L-15 farm utility rear tires

THANK YOU FOR ATTENDING OUR AUCTIONS

Catalog for Auction:ANNUAL SPRING CONTRACTORS AUCTION

Lot Num	Description	Lot Num	Description
1306	UNVERFERTH HT30 HEADER TRANSPORT TRAILER, sn:7396, equipped w/ adjustable rest brackets, will transport 30 ft or less grain platforms and 12 Row corn header platforms, oscillating rear axle, Goodyear 7.50-10 Rib C/T tires		

THANK YOU FOR ATTENDING OUR AUCTIONS



702 Pine Ridge Road Beech Mtn, NC 28604

- Chalet Style Home
- 3BR/2.5BA
- LOFT
- .35 acres near Ski Beech and Beech Mtn Golf Club
- 1320 Total Living Sq Ft, Built 1968
- on State Maintained Paved Road with great access
- Tax Value \$155,200

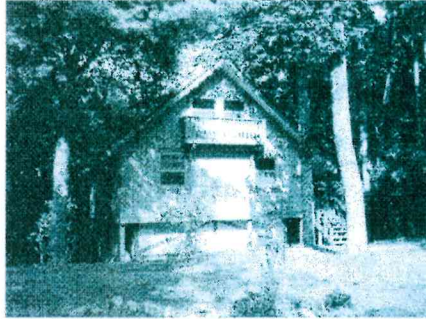
2013 Renovations Include:

- New roof on house and decks
- All new siding
- New decks/covered porches
- Beautifully stained porch ceiling
- Newly painted exterior/foundation
- All new windows and doors
- Water and sewer connections replaced with new sewer life pump and tank
- Newly insulated foundation, replacing foundation vent
- New insulation on lower level
- Widened steps leading to lower level
- Main level recently caulked, ready for paint
- Everything in the home has been inspected and up to code
- New outside lighting (canned lights on porches, flood lights, other lighting)
- Have total 165,000 invested in home including all renovations with all records





702 Pine Ridge Rd Beech Mountain, NC 28604



BEDROOMS: 3
FULL BATHS: 2
HALF BATHS: 0
STYLE: Mountain, Chalet
YEAR BUILT: 1968
TOTAL AREA RANGE: 1000-1499
BELOW GRADE LIVING AREA: 560
ABOVE GRADE LIVING AREA: 760
BELOW GRADE UNFINISHED AREA: 0
ABOVE GRADE UNFINISHED AREA: 0
1ST FLOOR LIVING AREA: 560
2ND FLOOR LIVING AREA: 200
3RD FLOOR LIVING AREA: 0
APX TOTAL LIVING AREA: 1320
APX TOTAL AREA: 1320
GARAGE: None

(ZONE)TOWNSHIP: 6-Laurel Creek,
Beaver Dam
COUNTY: Watauga
SUBDIVISION:
FIRE DISTRICT: Beech Mountain
SCHOOL: Valle Crucis
APX LAND SIZE: <=.999 ac
ACRES: 0.35

PIN #: 1941-71-1662-000
PROPERTY TAXES: 1541
PLAT SECTION:

TAX VALUE: 155200
DEED BOOK/PAGE: 1189/022
PLAT BOOK/PAGE:

CONFIRMED SPECIAL ASSESSMENT: No
PROPOSED SPECIAL ASSESSMENT: No

CONFIRMED SPECIAL ASSESSMENT AMOUNT:
PROPOSED SPECIAL ASSESSMENT AMOUNT:

OWNERS ASSOCIATION NAME:

OWNER'S ASSOCIATION:

QUALIFIES FOR CLUB MEMBERSHIP: Yes

POA FEES:

ADDITIONAL FEES: Yes

POA FEES PAID:

REINSTATEMENT AMOUNT: 7155

ACCESS: Good

ROAD: State Maintained Paved

ZONING/RESTRICTIONS: Residential

LOT NUMBER:

UNIT NUMBER:

LOT PREFIX:

HOME WARRANTY: No

HOME WARRANTY \$ NOT TO EXCEED:

RENT AMOUNT:

RENT AMOUNT PAID:

	Lvl:	Flooring:
Foyer:		
Living Rm:	1	Carpet
Great Rm:		
Dining Rm:		
Kitchen:	1	Vinyl
Family/Den:	B	Carpet
Laundry Area:	B	

Mstr Bdrm:
Bedroom 2:
Bedroom 3:
Bedroom 4:
Bedroom 5:
Loft

Lvl:	Flooring:
1	Carpet
1	Carpet
B	Carpet
2	Carpet

Lvl:	Flooring:
1	
B	

EXTERIOR: Wood

CONSTRUCTION:

ROOF: Wood Shake, Other-See Remarks

BASEMENT: Full, Finished

ATTIC:

HEAT/AIR: Baseboard Electric

AUXILIARY HEAT SOURCE:

WATER: City

SEWER/SEPTIC: City

HOT WATER: Electric

INTERIOR CONDITION: Good

EXTERIOR CONDITION: Fair

DRIVEWAY: Private Gravel

PORCH/DECK: Open, Covered

WINDOWS: Storm

FIREPLACE: One

APPLIANCES: Electric Range, Exhaust Fan, Refrigerator, Washer, Dryer

AMENITIES: Wooded, Cable Available, Community Clubhouse, Community Tennis, Community Golf, Community Skiing, Club Membership Available, High Speed Internet, Short Term Rental Permitted, Long Term Rental Permitted, Community Pool, Community Lake Access, Other-See Remarks

GREEN BUILT:

DISCLOSURES:

DOCUMENTS:

DIRECTIONS: From Banner Elk: NC 194 N to Right on Beech Mountain Parkway, follow past Ski Beech to R on Pine Ridge Rd, follow to #702 on Right.

PUBLIC REMARKS: Beech Mountain Chalet style home offering 3BR/2BA with loft on .35 acres near Ski Beech, Beech Mountain Golf Club and Buckeye Lake recreation center. Home would make a great vacation home at a cool elevation and good location near all Beech Mountain amenities including: skiing, golf, tennis, pool, fitness facility, fishing and more. Club membership fees apply to certain amenities. Home does need some repairs but has great potential.



**Lloyd
Meekins
& Sons
Auction Co.**

**Auction Co.
& Sons**